

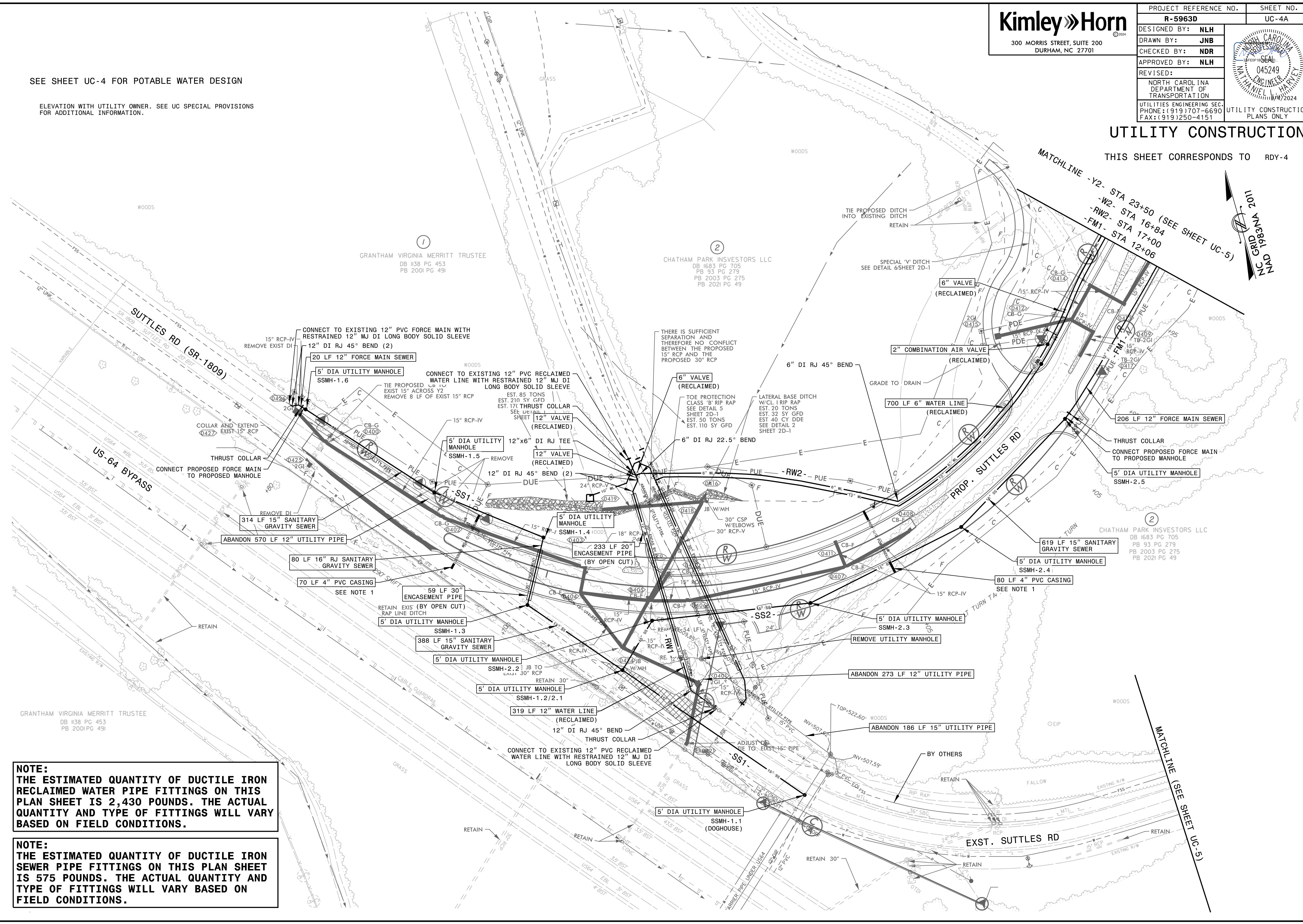
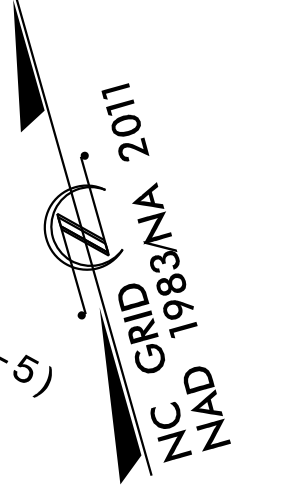
PROJECT REFERENCE NO.	R-5963D	SHEET NO.	UC-4A
DESIGNED BY:	NLH		
DRAWN BY:	JNB		
CHECKED BY:	NDR		
APPROVED BY:	NLH		
REVISED:			
NORTH CAROLINA DEPARTMENT OF TRANSPORTATION		UTILITY CONSTRUCTION PLANS ONLY	
UTILITIES ENGINEERING SEC. PHONE: (919) 707-6690 FAX: (919) 250-4151			

SEE SHEET UC-4 FOR POTABLE WATER DESIGN

ELEVATION WITH UTILITY OWNER. SEE UC SPECIAL PROVISIONS FOR ADDITIONAL INFORMATION.

## UTILITY CONSTRUCTION

THIS SHEET CORRESPONDS TO RDY-4



**NOTE:**  
THE ESTIMATED QUANTITY OF DUCTILE IRON RECLAIMED WATER PIPE FITTINGS ON THIS PLAN SHEET IS 2,430 POUNDS. THE ACTUAL QUANTITY AND TYPE OF FITTINGS WILL VARY BASED ON FIELD CONDITIONS.

**NOTE:**  
THE ESTIMATED QUANTITY OF DUCTILE IRON SEWER PIPE FITTINGS ON THIS PLAN SHEET IS 575 POUNDS. THE ACTUAL QUANTITY AND TYPE OF FITTINGS WILL VARY BASED ON FIELD CONDITIONS.