

PROJECT: U-5112

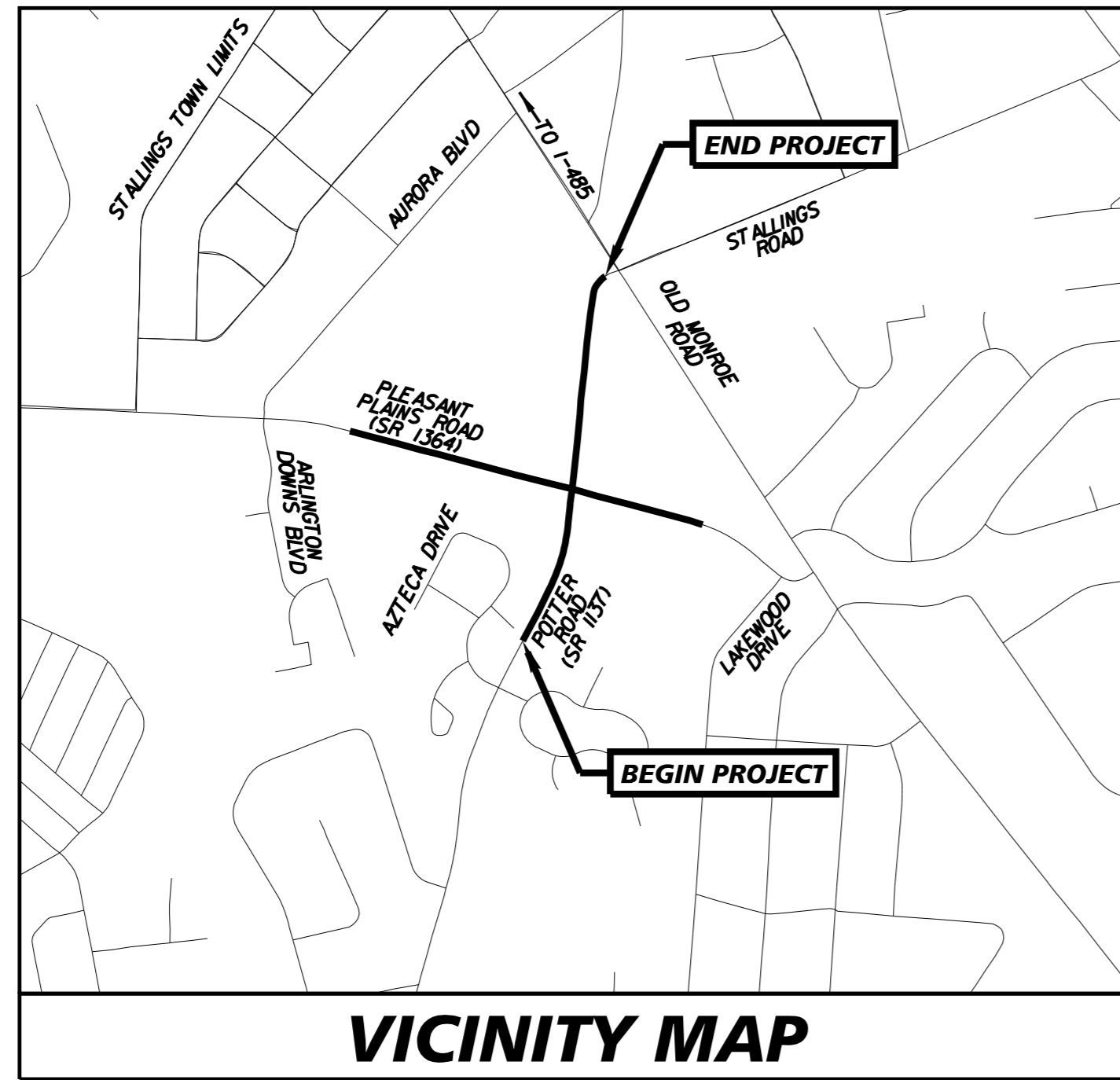
CONTRACT: C204540

STATE OF NORTH CAROLINA
DIVISION OF HIGHWAYS

**UTILITIES BY OTHERS PLANS
UNION COUNTY**

T.I.P. NO.	SHEET NO.
U-5112	UO-1

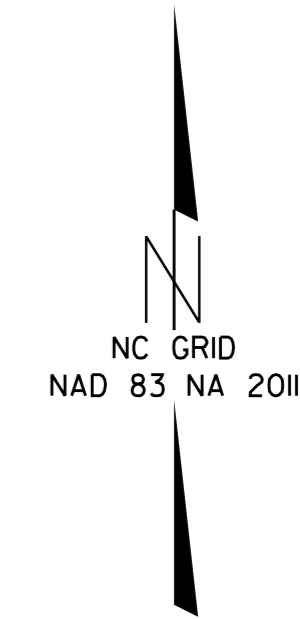
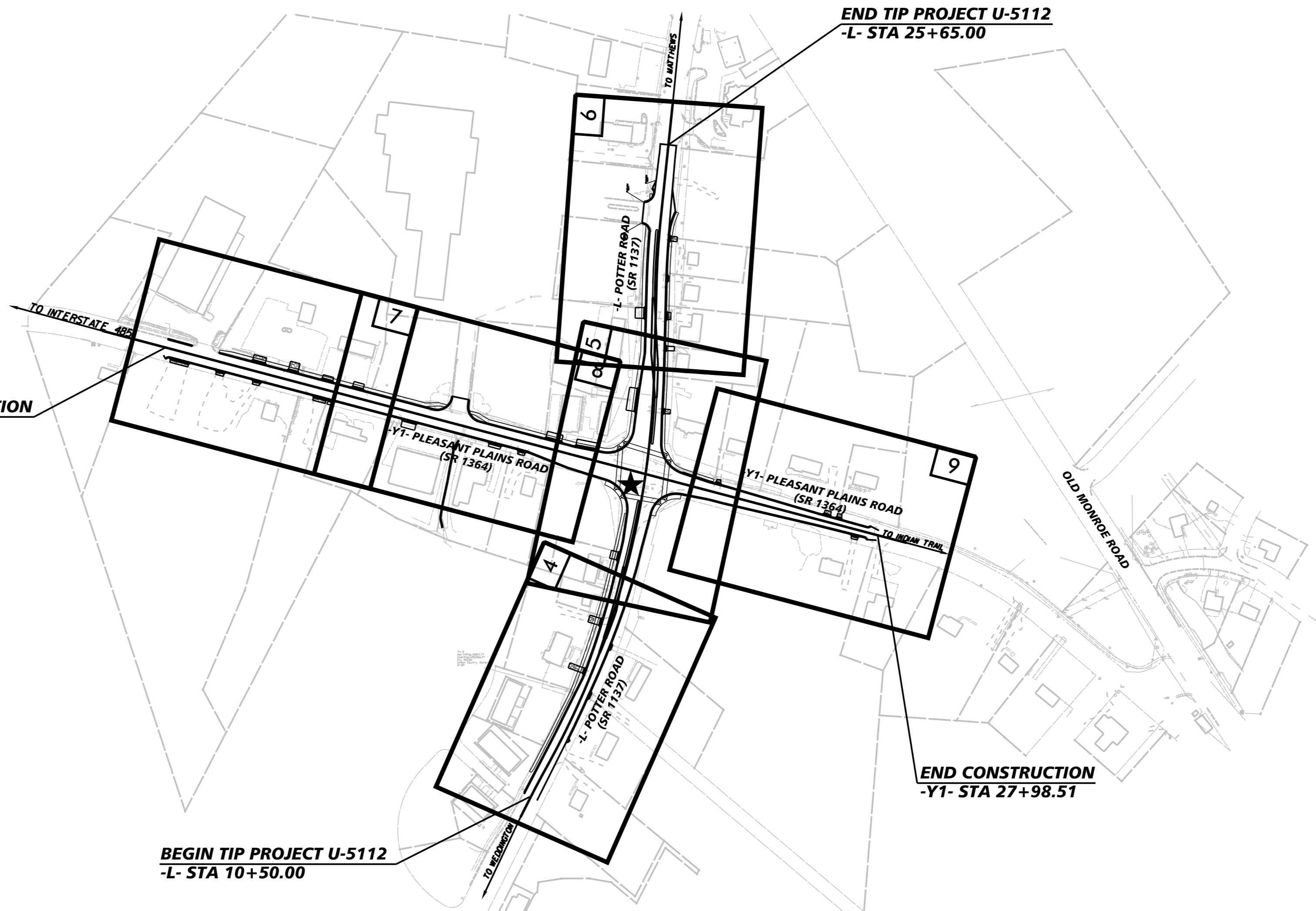
NOTE:
ALL PROPOSED UTILITY WORK SHOWN ON THIS SHEET WILL BE DONE BY OTHERS. NO PAYMENT WILL BE MADE TO THE CONTRACTOR FOR PROPOSED UTILITY WORK SHOWN ON THIS SHEET.



VICINITY MAP

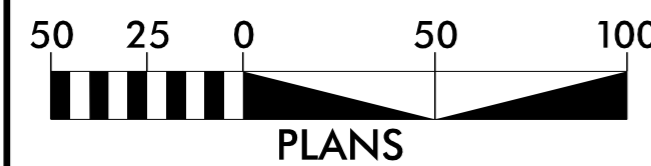
LOCATION: SR 1364 (PLEASANT PLAINS ROAD) AT SR 1357 (POTTER ROAD) IN STALLINGS. CONSTRUCT INTERSECTION IMPROVEMENTS INCLUDING LEFT TURN LANES AND MODIFICATION OF TRAFFIC SIGNAL.

TYPE OF WORK: RELOCATION OF GAS AND COMMUNICATIONS



★ TRAFFIC SIGNAL

GRAPHIC SCALE




INDEX OF SHEETS	
<u>SHEET NO.</u>	<u>DESCRIPTION</u>
UO-1	TITLE SHEET
UO-2 THRU UO-7	UTILITY BY OTHERS PLAN SHEETS

UTILITY OWNERS WITH CONFLICTS
(A) CATV - SEGRA
(B) GAS - PNG

PREPARED IN THE OFFICE OF:

Kimley»Horn

FRANK MASTERSON, PE UTILITY PROJECT MANAGER
ADAM RECKER, EIT PROJECT UTILITY CAD



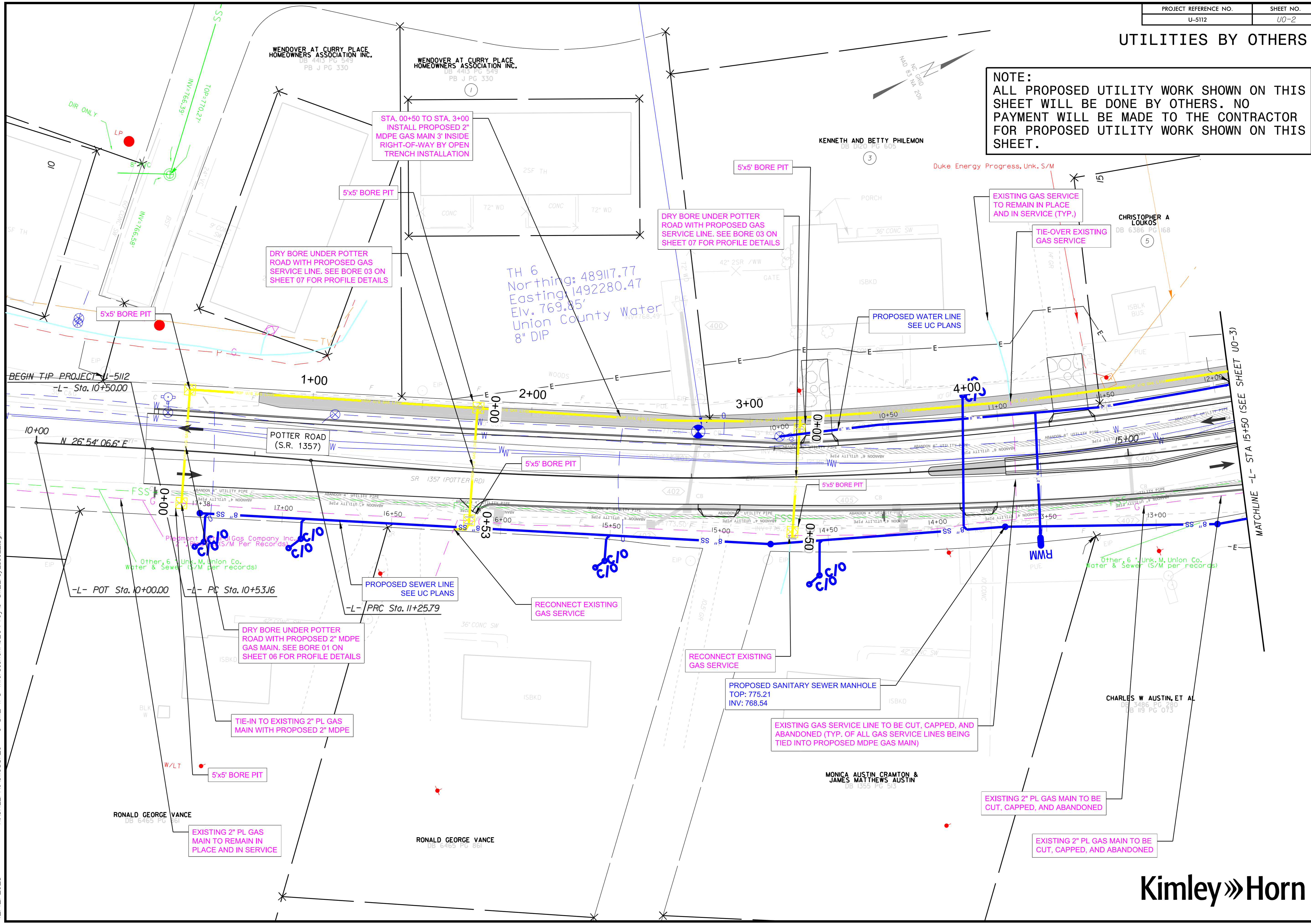
PREPARED FOR OFFICE OF:
**DIVISION OF HIGHWAYS
DIVISION 10**

716 W. MAIN ST.
ALBEMARLE, NC 28001

YANWEI MA, PE	DM-STIP PROJECT ENGINEER
LYNN BASINGER	DIVISION UTILITY ENGINEER
ADAM PRESLAR, EI	DIVISION UTILITY COORDINATOR

UTILITIES BY OTHERS

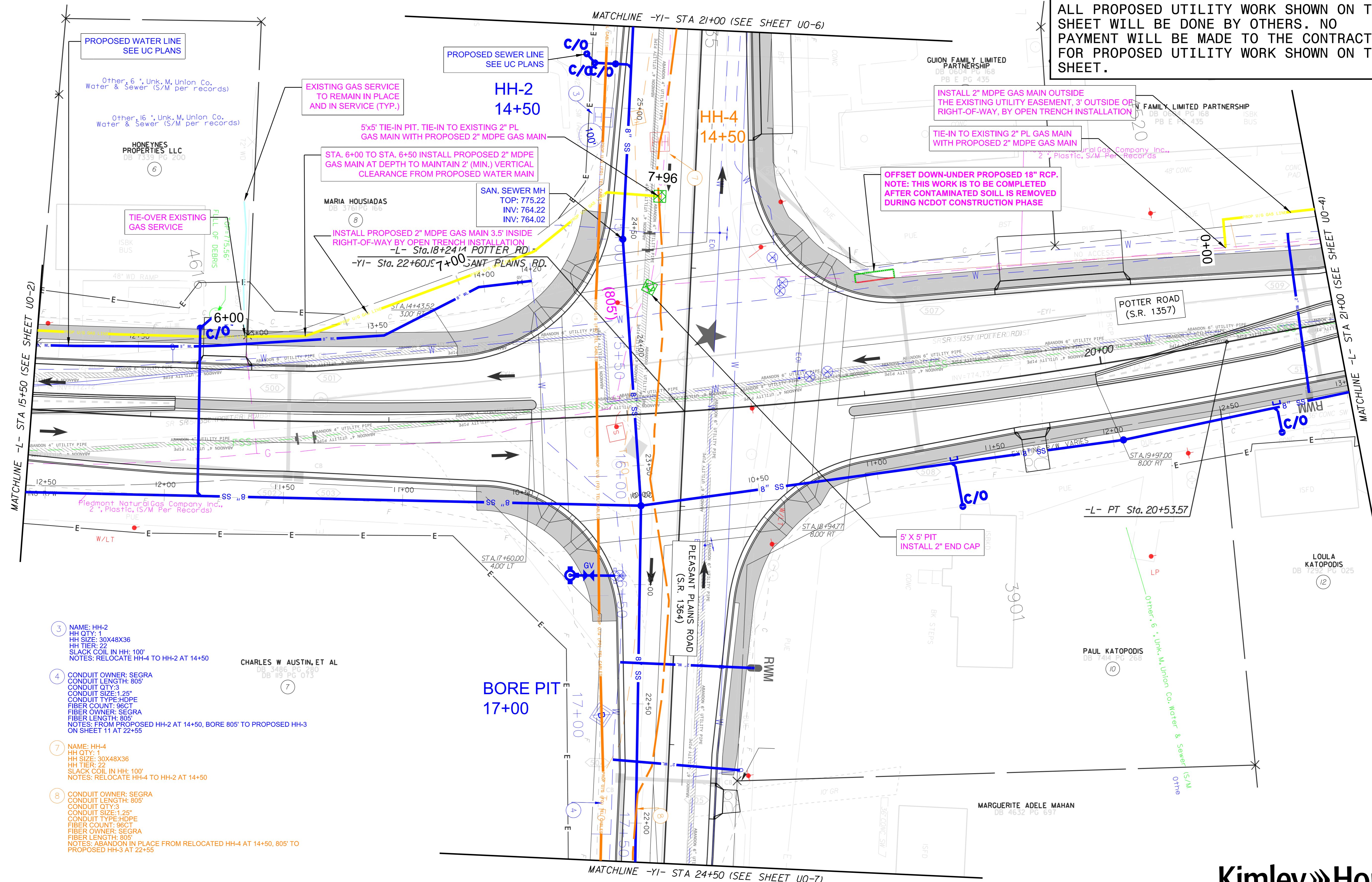
NOTE:
 ALL PROPOSED UTILITY WORK SHOWN ON THIS SHEET WILL BE DONE BY OTHERS. NO PAYMENT WILL BE MADE TO THE CONTRACTOR FOR PROPOSED UTILITY WORK SHOWN ON THIS SHEET.



K:\CHL\PROJ\101036720 - U-5112 (P3) Inter section\U0\BOV\Pro\U-5112_rdy_UBO_2.dgn
 12/12/2023

UTILITIES BY OTHERS

NOTE:
 ALL PROPOSED UTILITY WORK SHOWN ON THIS SHEET WILL BE DONE BY OTHERS. NO PAYMENT WILL BE MADE TO THE CONTRACTOR FOR PROPOSED UTILITY WORK SHOWN ON THIS SHEET.

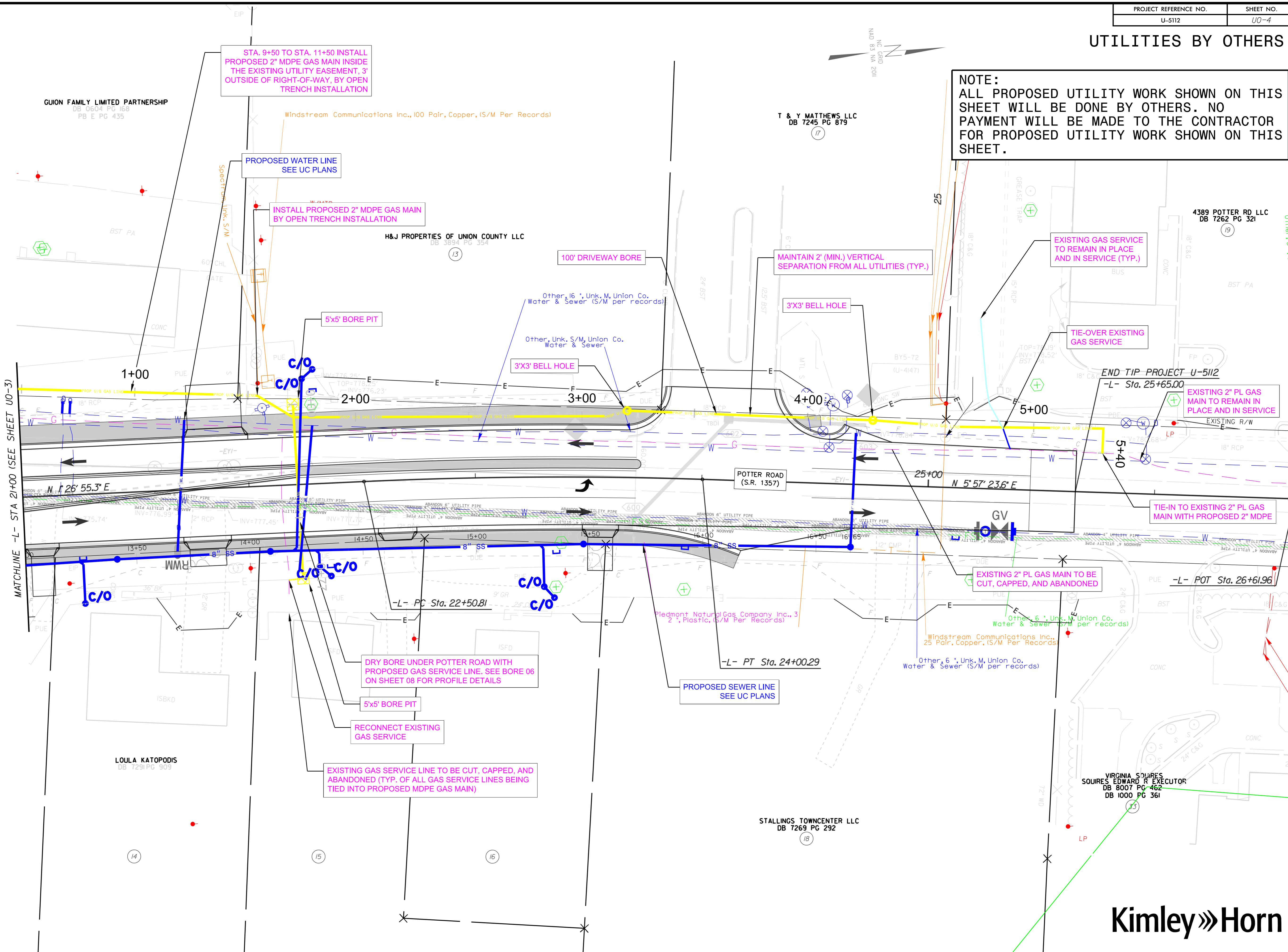


- ③ NAME: HH-2
 HH QTY: 1
 HH SIZE: 30X48X36
 HH TIER: 22
 SLACK COIL IN HH: 100'
 NOTES: RELOCATE HH-4 TO HH-2 AT 14+50
- ④ CONDUIT OWNER: SEGRA
 CONDUIT LENGTH: 805'
 CONDUIT QTY: 3
 CONDUIT SIZE: 1.25"
 CONDUIT TYPE: HDPE
 FIBER COUNT: 96C7
 FIBER OWNER: SEGRA
 FIBER LENGTH: 805'
 NOTES: FROM PROPOSED HH-2 AT 14+50, BORE 805' TO PROPOSED HH-3 ON SHEET 11 AT 22+55
- ⑦ NAME: HH-4
 HH QTY: 1
 HH SIZE: 30X48X36
 HH TIER: 22
 SLACK COIL IN HH: 100'
 NOTES: RELOCATE HH-4 TO HH-2 AT 14+50
- ⑧ CONDUIT OWNER: SEGRA
 CONDUIT LENGTH: 805'
 CONDUIT QTY: 3
 CONDUIT SIZE: 1.25"
 CONDUIT TYPE: HDPE
 FIBER COUNT: 96C7
 FIBER OWNER: SEGRA
 FIBER LENGTH: 805'
 NOTES: ABANDON IN PLACE FROM RELOCATED HH-4 AT 14+50, 805' TO PROPOSED HH-3 AT 22+55

K:\CHL\PROJECTS\U0\U0-3.dgn
 U-5112 (P3) Infr section\U0\U0-3.dgn
 12/12/2023

UTILITIES BY OTHERS

NOTE:
 ALL PROPOSED UTILITY WORK SHOWN ON THIS SHEET WILL BE DONE BY OTHERS. NO PAYMENT WILL BE MADE TO THE CONTRACTOR FOR PROPOSED UTILITY WORK SHOWN ON THIS SHEET.



STA. 9+50 TO STA. 11+50 INSTALL PROPOSED 2" MDPE GAS MAIN INSIDE THE EXISTING UTILITY EASEMENT, 3' OUTSIDE OF RIGHT-OF-WAY, BY OPEN TRENCH INSTALLATION

PROPOSED WATER LINE SEE UC PLANS

INSTALL PROPOSED 2" MDPE GAS MAIN BY OPEN TRENCH INSTALLATION

100' DRIVEWAY BORE

MAINTAIN 2' (MIN.) VERTICAL SEPARATION FROM ALL UTILITIES (TYP.)

3'X3' BELL HOLE

EXISTING GAS SERVICE TO REMAIN IN PLACE AND IN SERVICE (TYP.)

TIE-OVER EXISTING GAS SERVICE

END TIP PROJECT U-5112 -L- Sta. 25+65.00

EXISTING 2" PL GAS MAIN TO REMAIN IN PLACE AND IN SERVICE

TIE-IN TO EXISTING 2" PL GAS MAIN WITH PROPOSED 2" MDPE

EXISTING 2" PL GAS MAIN TO BE CUT, CAPPED, AND ABANDONED

-L- POT Sta. 26+61.96

DRY BORE UNDER POTTER ROAD WITH PROPOSED GAS SERVICE LINE. SEE BORE 06 ON SHEET 08 FOR PROFILE DETAILS

5'X5' BORE PIT

RECONNECT EXISTING GAS SERVICE

EXISTING GAS SERVICE LINE TO BE CUT, CAPPED, AND ABANDONED (TYP. OF ALL GAS SERVICE LINES BEING TIED INTO PROPOSED MDPE GAS MAIN)

PROPOSED SEWER LINE SEE UC PLANS

-L- PT Sta. 24+00.29

-L- PC Sta. 22+50.81

MATCHLINE -L- STA 2+00 (SEE SHEET U0-3)

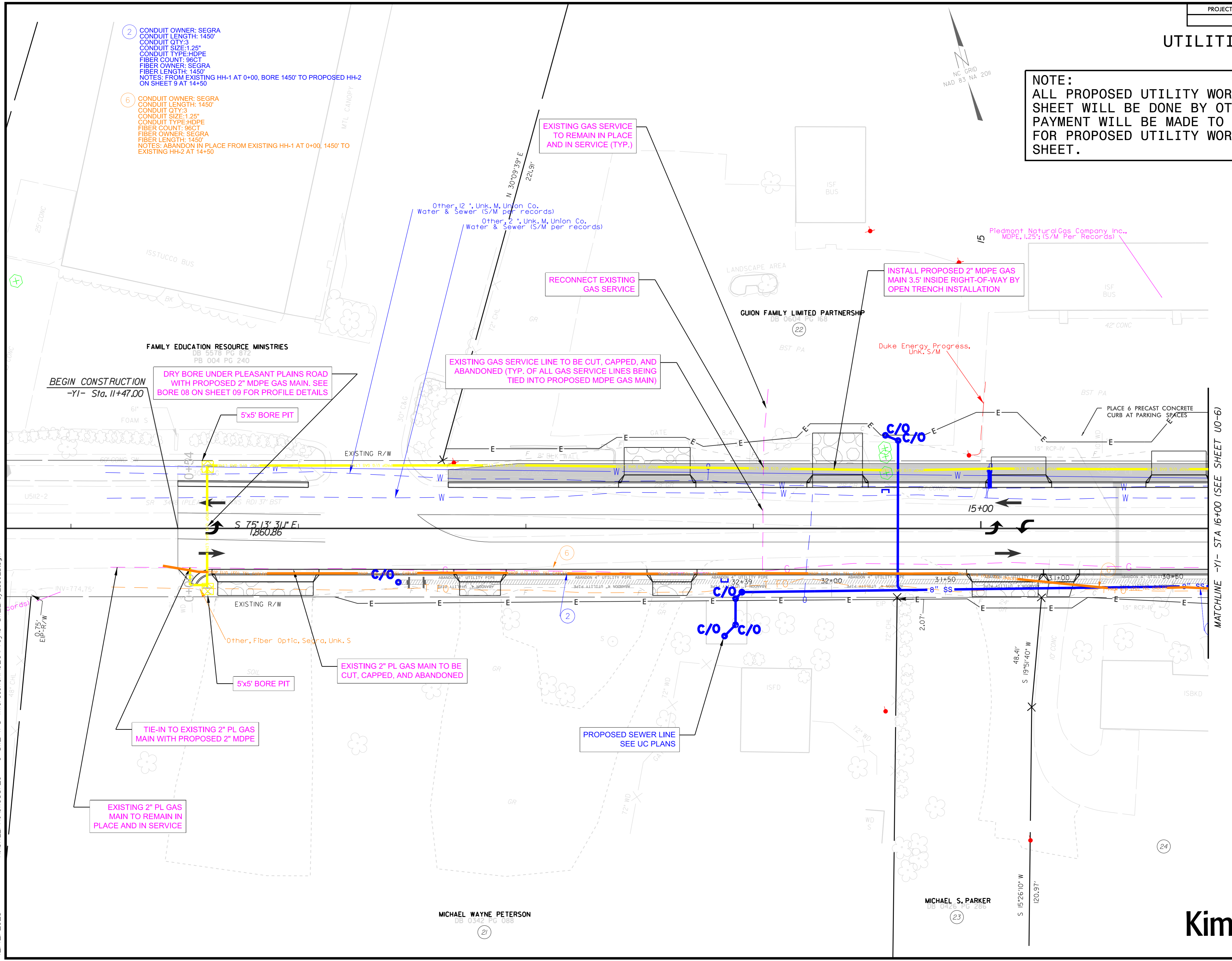
12/12/2023 K:\CHL\PROJECTS\U-5112\U-5112_rdy_UBO_4.dgn

UTILITIES BY OTHERS

NOTE:
 ALL PROPOSED UTILITY WORK SHOWN ON THIS SHEET WILL BE DONE BY OTHERS. NO PAYMENT WILL BE MADE TO THE CONTRACTOR FOR PROPOSED UTILITY WORK SHOWN ON THIS SHEET.

2 CONDUIT OWNER: SEGRA
 CONDUIT LENGTH: 1450'
 CONDUIT QTY: 3
 CONDUIT SIZE: 1.25"
 CONDUIT TYPE: HDPE
 FIBER COUNT: 96CT
 FIBER OWNER: SEGRA
 FIBER LENGTH: 1450'
 NOTES: FROM EXISTING HH-1 AT 0+00, BORE 1450' TO PROPOSED HH-2 ON SHEET 9 AT 14+50

6 CONDUIT OWNER: SEGRA
 CONDUIT LENGTH: 1450'
 CONDUIT QTY: 3
 CONDUIT SIZE: 1.25"
 CONDUIT TYPE: HDPE
 FIBER COUNT: 96CT
 FIBER OWNER: SEGRA
 FIBER LENGTH: 1450'
 NOTES: ABANDON IN PLACE FROM EXISTING HH-1 AT 0+00, 1450' TO EXISTING HH-2 AT 14+50



BEGIN CONSTRUCTION
 -Y1- Sta. 11+47.00

DRY BORE UNDER PLEASANT PLAINS ROAD WITH PROPOSED 2" MDPE GAS MAIN. SEE BORE 08 ON SHEET 09 FOR PROFILE DETAILS

5'x5' BORE PIT

EXISTING GAS SERVICE LINE TO BE CUT, CAPPED, AND ABANDONED (TYP. OF ALL GAS SERVICE LINES BEING TIED INTO PROPOSED MDPE GAS MAIN)

INSTALL PROPOSED 2" MDPE GAS MAIN 3.5' INSIDE RIGHT-OF-WAY BY OPEN TRENCH INSTALLATION

EXISTING 2" PL GAS MAIN TO BE CUT, CAPPED, AND ABANDONED

TIE-IN TO EXISTING 2" PL GAS MAIN WITH PROPOSED 2" MDPE

EXISTING 2" PL GAS MAIN TO REMAIN IN PLACE AND IN SERVICE

PROPOSED SEWER LINE SEE UC PLANS

MATCHLINE -Y1- STA 16+00 (SEE SHEET U0-6)

12/12/2023 K:\CHL\PROJ\1036720 - U-5112 (P3) Inter section\U0\U0-5\U0-5.dgn

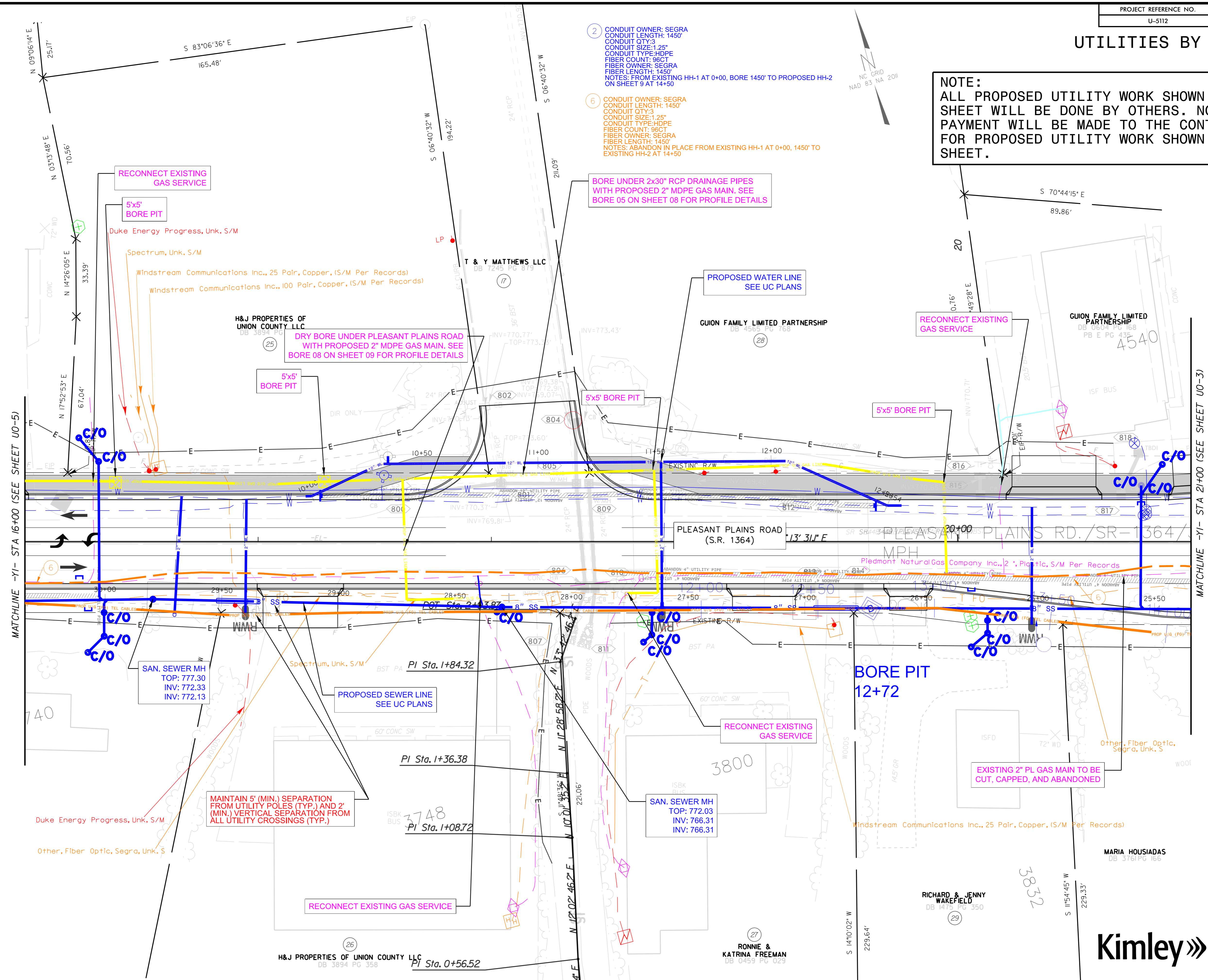
MICHAEL WAYNE PETERSON
 DB 0342 PG 088

MICHAEL S. PARKER
 DB 0426 PG 283

UTILITIES BY OTHERS

NOTE:
 ALL PROPOSED UTILITY WORK SHOWN ON THIS SHEET WILL BE DONE BY OTHERS. NO PAYMENT WILL BE MADE TO THE CONTRACTOR FOR PROPOSED UTILITY WORK SHOWN ON THIS SHEET.

- ② CONDUIT OWNER: SEGRA
 CONDUIT LENGTH: 1450'
 CONDUIT QTY: 3
 CONDUIT SIZE: 1.25"
 CONDUIT TYPE: HDPE
 FIBER COUNT: 96CT
 FIBER OWNER: SEGRA
 FIBER LENGTH: 1450'
 NOTES: FROM EXISTING HH-1 AT 0+00, BORE 1450' TO PROPOSED HH-2 ON SHEET 9 AT 14+50
- ⑥ CONDUIT OWNER: SEGRA
 CONDUIT LENGTH: 1450'
 CONDUIT QTY: 3
 CONDUIT SIZE: 1.25"
 CONDUIT TYPE: HDPE
 FIBER COUNT: 96CT
 FIBER OWNER: SEGRA
 FIBER LENGTH: 1450'
 NOTES: ABANDON IN PLACE FROM EXISTING HH-1 AT 0+00, 1450' TO EXISTING HH-2 AT 14+50



MATCHLINE -YI- STA 16+00 (SEE SHEET U0-5)

MATCHLINE -YI- STA 21+00 (SEE SHEET U0-3)

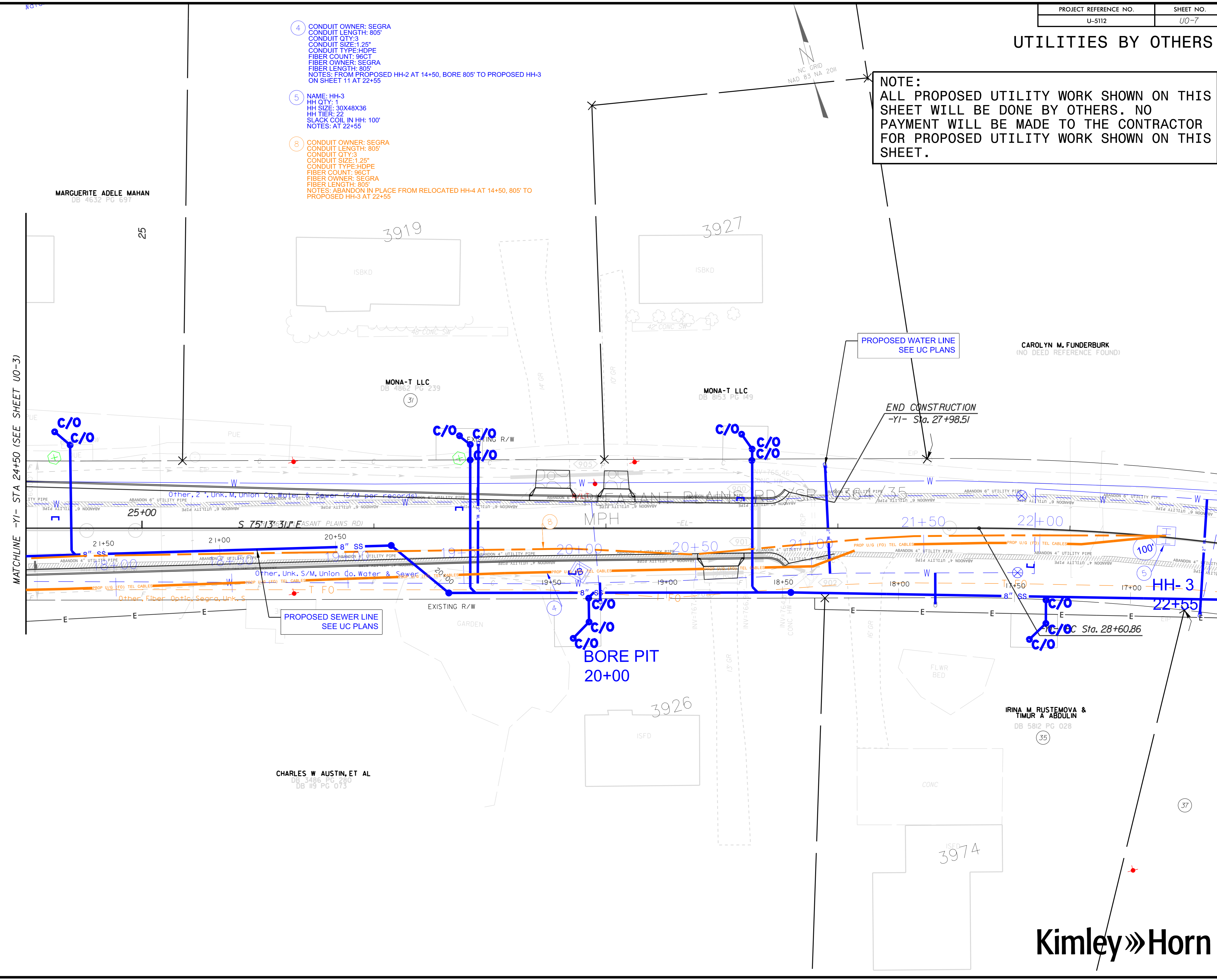
MAINTAIN 5' (MIN.) SEPARATION FROM UTILITY POLES (TYP.) AND 2' (MIN.) VERTICAL SEPARATION FROM ALL UTILITY CROSSINGS (TYP.)

12/12/2023 K:\CHL\PROJ\01036720 - U-5112 (P3) Inter section\U0\U0-6.dgn

UTILITIES BY OTHERS

NOTE:
ALL PROPOSED UTILITY WORK SHOWN ON THIS SHEET WILL BE DONE BY OTHERS. NO PAYMENT WILL BE MADE TO THE CONTRACTOR FOR PROPOSED UTILITY WORK SHOWN ON THIS SHEET.

- ④ CONDUIT OWNER: SEGRA
CONDUIT LENGTH: 805'
CONDUIT QTY: 3
CONDUIT SIZE: 1.25"
CONDUIT TYPE: HDPE
FIBER COUNT: 96CT
FIBER OWNER: SEGRA
FIBER LENGTH: 805'
NOTES: FROM PROPOSED HH-2 AT 14+50, BORE 805' TO PROPOSED HH-3 ON SHEET 11 AT 22+55
- ⑤ NAME: HH-3
HH QTY: 1
HH SIZE: 30X48X36
HH TIER: 22
SLACK COIL IN HH: 100'
NOTES: AT 22+55
- ⑧ CONDUIT OWNER: SEGRA
CONDUIT LENGTH: 805'
CONDUIT QTY: 3
CONDUIT SIZE: 1.25"
CONDUIT TYPE: HDPE
FIBER COUNT: 96CT
FIBER OWNER: SEGRA
FIBER LENGTH: 805'
NOTES: ABANDON IN PLACE FROM RELOCATED HH-4 AT 14+50, 805' TO PROPOSED HH-3 AT 22+55



MATCHLINE -Y1- STA 24+50 (SEE SHEET U0-3)

K:\CHL\PRJ\01036720 - U-5112 (P3) Inter section\U0\U0-7.dgn 12/12/2023