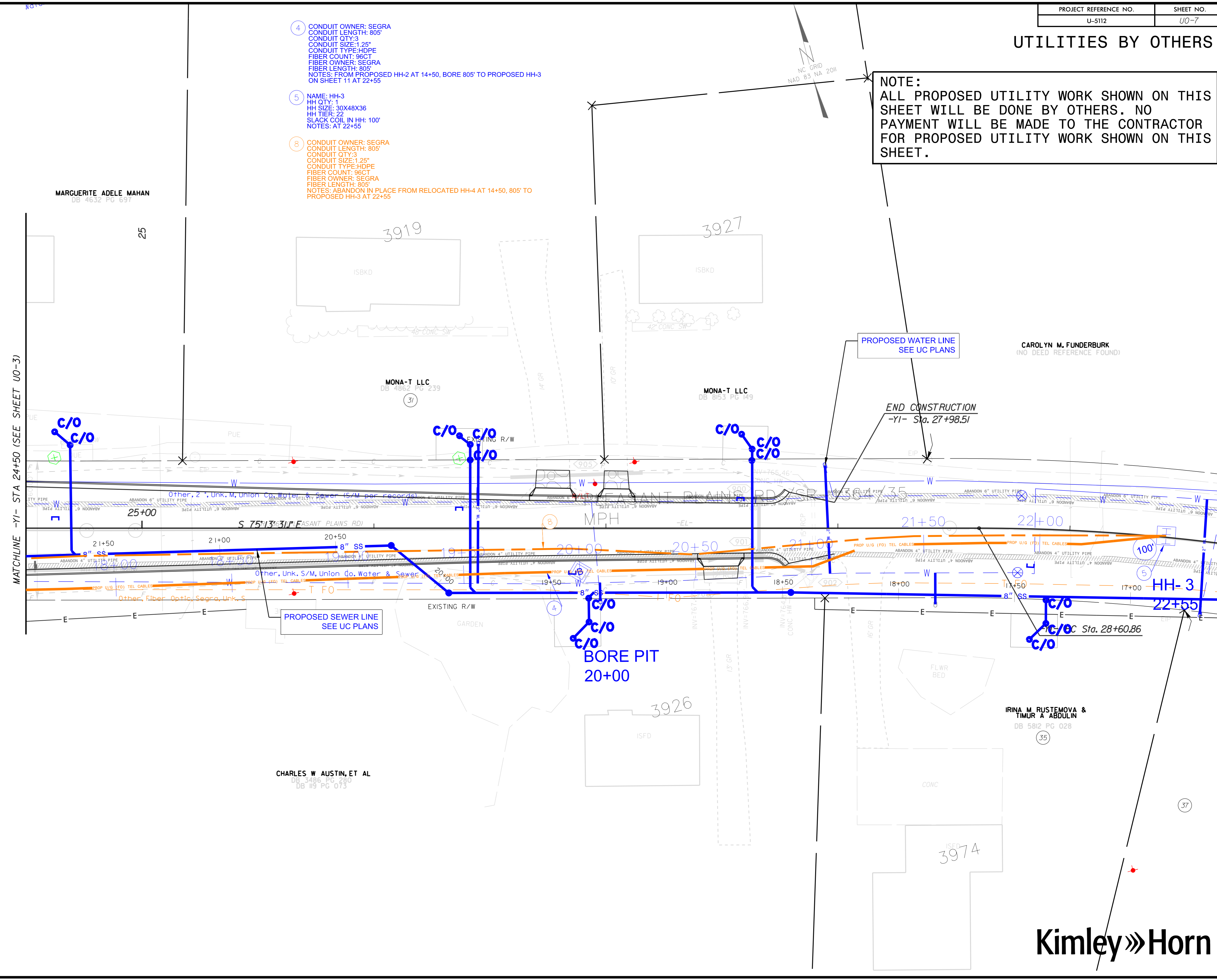


UTILITIES BY OTHERS

NOTE:
ALL PROPOSED UTILITY WORK SHOWN ON THIS SHEET WILL BE DONE BY OTHERS. NO PAYMENT WILL BE MADE TO THE CONTRACTOR FOR PROPOSED UTILITY WORK SHOWN ON THIS SHEET.

- ④ CONDUIT OWNER: SEGRA
CONDUIT LENGTH: 805'
CONDUIT QTY: 3
CONDUIT SIZE: 1.25"
CONDUIT TYPE: HDPE
FIBER COUNT: 96CT
FIBER OWNER: SEGRA
FIBER LENGTH: 805'
NOTES: FROM PROPOSED HH-2 AT 14+50, BORE 805' TO PROPOSED HH-3 ON SHEET 11 AT 22+55
- ⑤ NAME: HH-3
HH QTY: 1
HH SIZE: 30X48X36
HH TIER: 22
SLACK COIL IN HH: 100'
NOTES: AT 22+55
- ⑧ CONDUIT OWNER: SEGRA
CONDUIT LENGTH: 805'
CONDUIT QTY: 3
CONDUIT SIZE: 1.25"
CONDUIT TYPE: HDPE
FIBER COUNT: 96CT
FIBER OWNER: SEGRA
FIBER LENGTH: 805'
NOTES: ABANDON IN PLACE FROM RELOCATED HH-4 AT 14+50, 805' TO PROPOSED HH-3 AT 22+55



MATCHLINE -Y1- STA 24+50 (SEE SHEET U0-3)

K:\CHL\PRJ\01036720 - U-5112 (P3) Inter section\U0\U0-7.dgn 12/12/2023