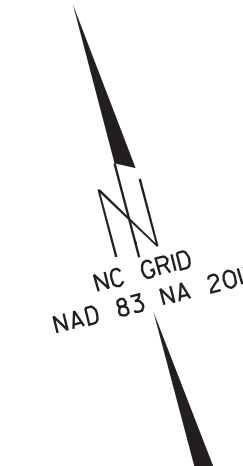
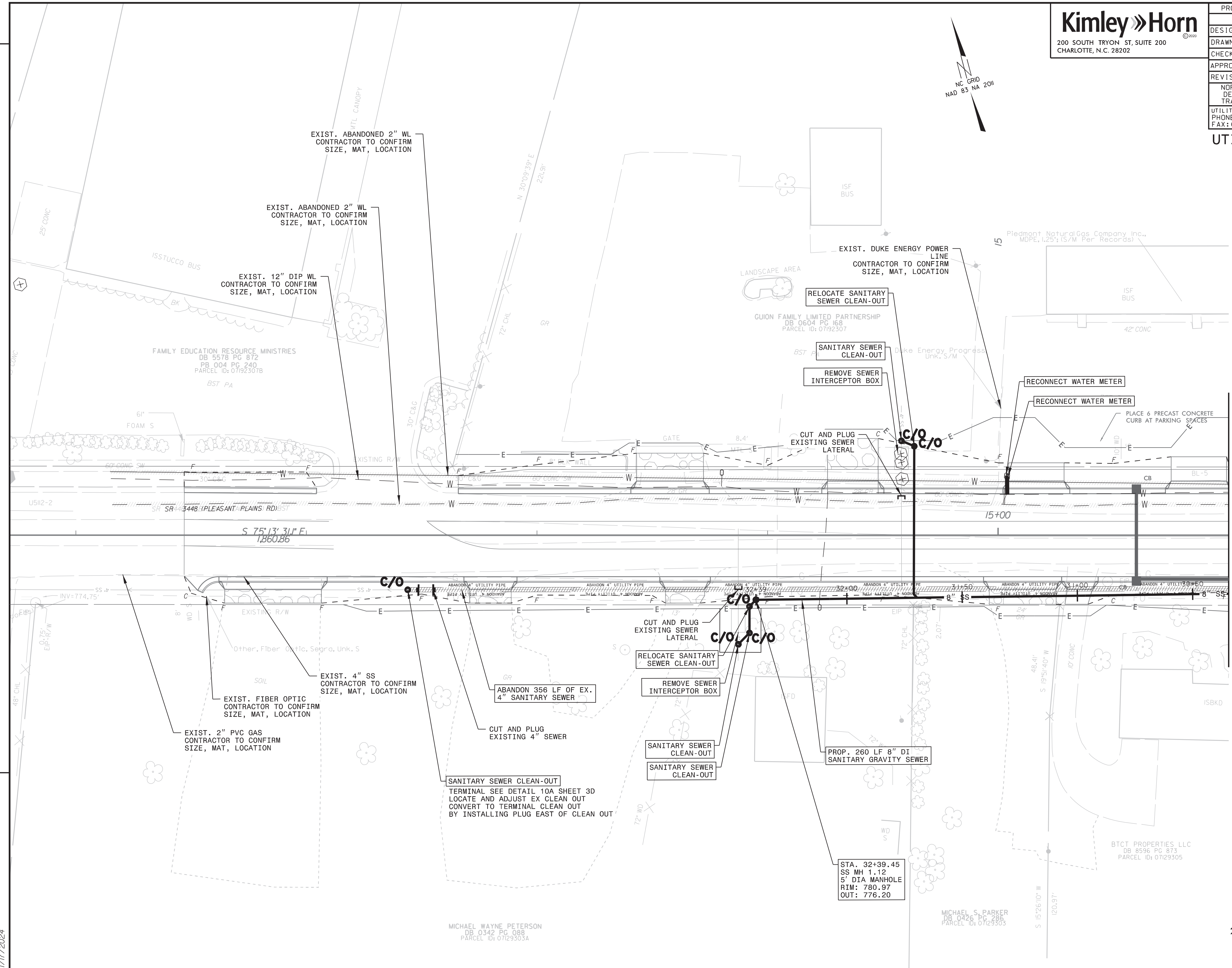


PROJECT REFERENCE NO.	UC-7
SHEET NO.	UC-7
DESIGNED BY:	SJJ
DRAWN BY:	SCA
CHECKED BY:	MAS
APPROVED BY:	
REVISED:	
NORTH CAROLINA PROFESSIONAL SEAL 024691 KIMLEY HORN & ASSOCIATES, P.C. KIMLEY C. SMITH, P.E.	
NORTH CAROLINA DEPARTMENT OF TRANSPORTATION	
UTILITIES ENGINEERING SEC. 1/17/2024	UTILITY CONSTRUCTION PLANS ONLY

## UTILITY CONSTRUCTION

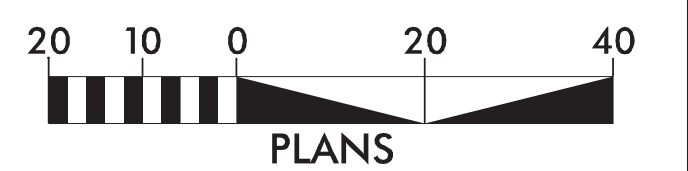


REVISIONS



MATCHLINE -YI- STA 16+00 (SEE SHEET 8)

NOTE:  
THE ESTIMATED QUANTITY OF DUCTILE IRON PIPE FITTINGS ON THIS PLAN SHEET IS 49 POUNDS. THE ACTUAL QUANTITY AND TYPE OF FITTING WILL VARY BASED ON FIELD CONDITIONS.  
NCDOT WEIGHT: 49 POUNDS  
UCPW WEIGHT: 0 POUNDS



1/17/2024

MICHAEL WAYNE PETERSON  
DB 0342 PG 088  
PARCEL ID: 07129303A

MICHAEL S. PARKER  
DB 0426 PG 286  
PARCEL ID: 07129303

BTCT PROPERTIES LLC  
DB 8596 PG 873  
PARCEL ID: 07129305

FAMILY EDUCATION RESOURCE MINISTRIES  
DB 5578 PG 872  
PB 004 PG 240  
PARCEL ID: 07192307B  
BST PA

GUION FAMILY LIMITED PARTNERSHIP  
DB 0604 PG 168  
PARCEL ID: 07192307

Piedmont Natural Gas Company Inc.,  
MDEP, I25; I57/M Per Records

SANITARY SEWER CLEAN-OUT  
TERMINAL SEE DETAIL 10A SHEET 3D  
LOCATE AND ADJUST EX CLEAN OUT  
CONVERT TO TERMINAL CLEAN OUT  
BY INSTALLING PLUG EAST OF CLEAN OUT

STA. 32+39.45  
SS MH 1.12  
5' DIA MANHOLE  
RIM: 780.97  
OUT: 776.20