


# SURVEY CONTROL SHEET

## W/EXISTING CENTERLINE ALIGNMENTS PRIOR TO CONSTRUCTION


PROJECT REFERENCE NO.	SHEET NO.
U-5112	RW02C-1
<b>Location and Surveys</b>	
ESP ASSOCIATES, INC 3475 LAKEMONT BLVD FORT MILL, SC 29708	
PROJECT SURVEYOR: RANDY W. NANCE	
 LICENSE NO. F-1407	
DOCUMENT NOT CONSIDERED FINAL UNLESS ALL SIGNATURES COMPLETED	


I, Randy W. Nance, PLS, certify that the Project Control was performed under my supervision from an actual GPS survey made under my supervision and the following information was used to perform the survey:

Class of survey: **AA**  
 Type of GPS field procedure: RTN  
 Dates of survey: 7/25/22 to 8/25/22  
 Datum/Epoch: NAD 83/2011  
 Published/Fixed-control use: N/A  
 Localized around: I5507-14  
 Northing: 483188.982  
 Easting: 1457726.427  
 Combined grid factor: 0.9998488  
 Geoid model: GEOID12B (CONUS)  
 Units: US Survey Feet

I also certify that the Baseline Control for this project was completed under my direct and responsible charge from an actual survey made under my supervision; that all horizontal closures had a minimum ratio of precision of 1:20,000 (Class AA) and Vertical accuracy to Class A. Field work was performed from 7/25/2022 to 8/25/2022, and all coordinates are based on NAD 83/2011 and all elevations are based on NAVD 88; that this survey was performed to meet the requirements of 21NCAC 56.1600 as applicable.



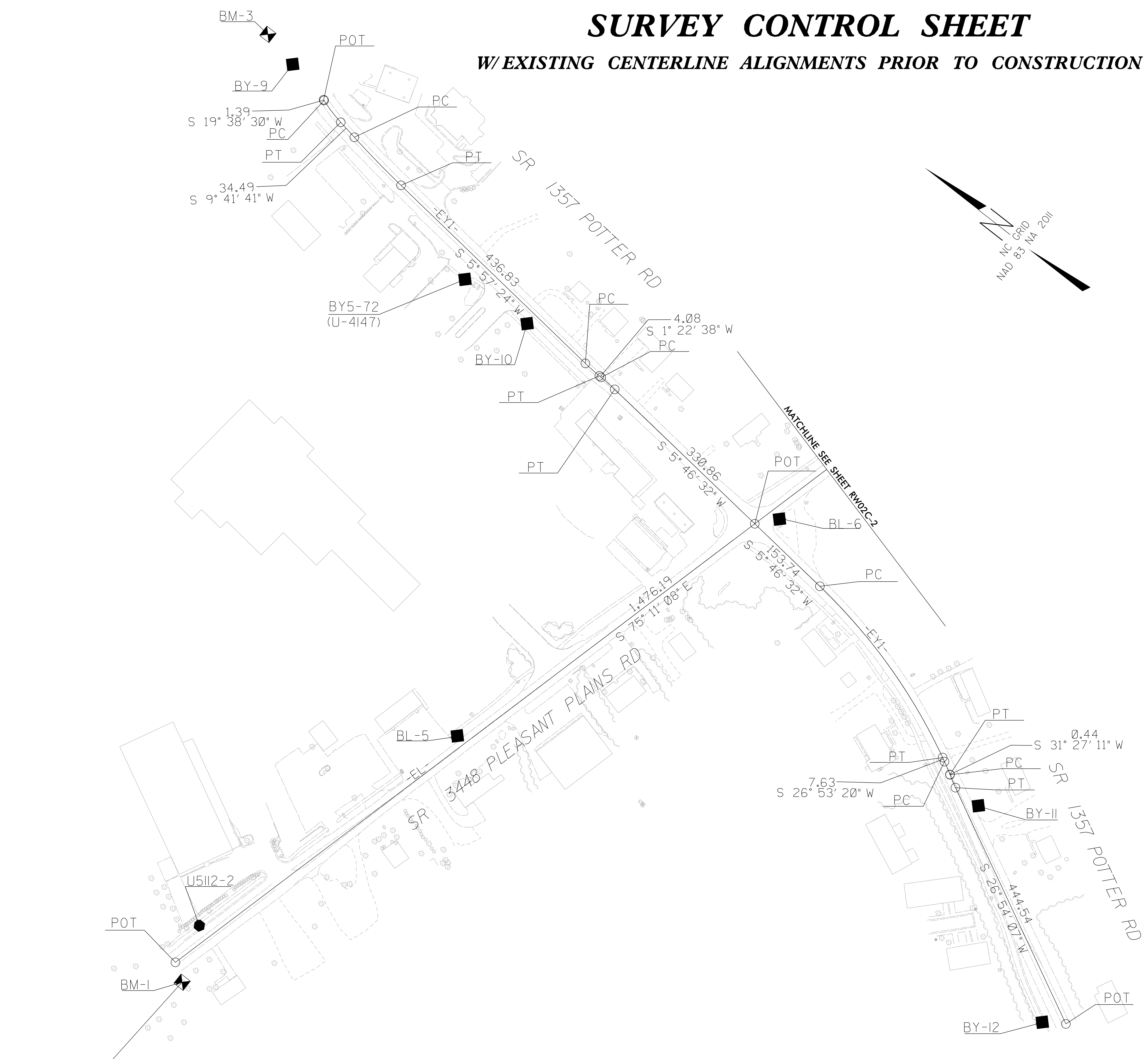
This 28th day of August, 2022.

DocuSigned by:  
  
 Randy W. Nance  
 Professional Land Surveyor L-4185

DocuSigned by:  
  
 Randy W. Nance  
 Professional Land Surveyor L-4185

Professional Land Surveyor L-4185

Professional Land Surveyor L-4185

### NOTES:

1. PROJECT CONTROL WAS ESTABLISHED USING GNSS, THE GLOBAL NAVIGATION SATELLITE SYSTEM.
2. THE SURVEY CONTROL DATA FOR THIS PROJECT HAS BEEN COMPILED FROM VARIOUS SOURCES. IF FURTHER INFORMATION REGARDING PROJECT CONTROL IS NEEDED, PLEASE CONTACT THE LOCATION AND SURVEYS UNIT.

REVISIONS

29-AUG-2022 07:51  
 E:\Projects\NC001\2022\JM01112\_u5112\_con\_esp\Location\Control\_Sheets\U5112\_1s\_rw02c-1\_220826.dgn  
 Petrucci AT ESP22061517

U5112-1

BM-4