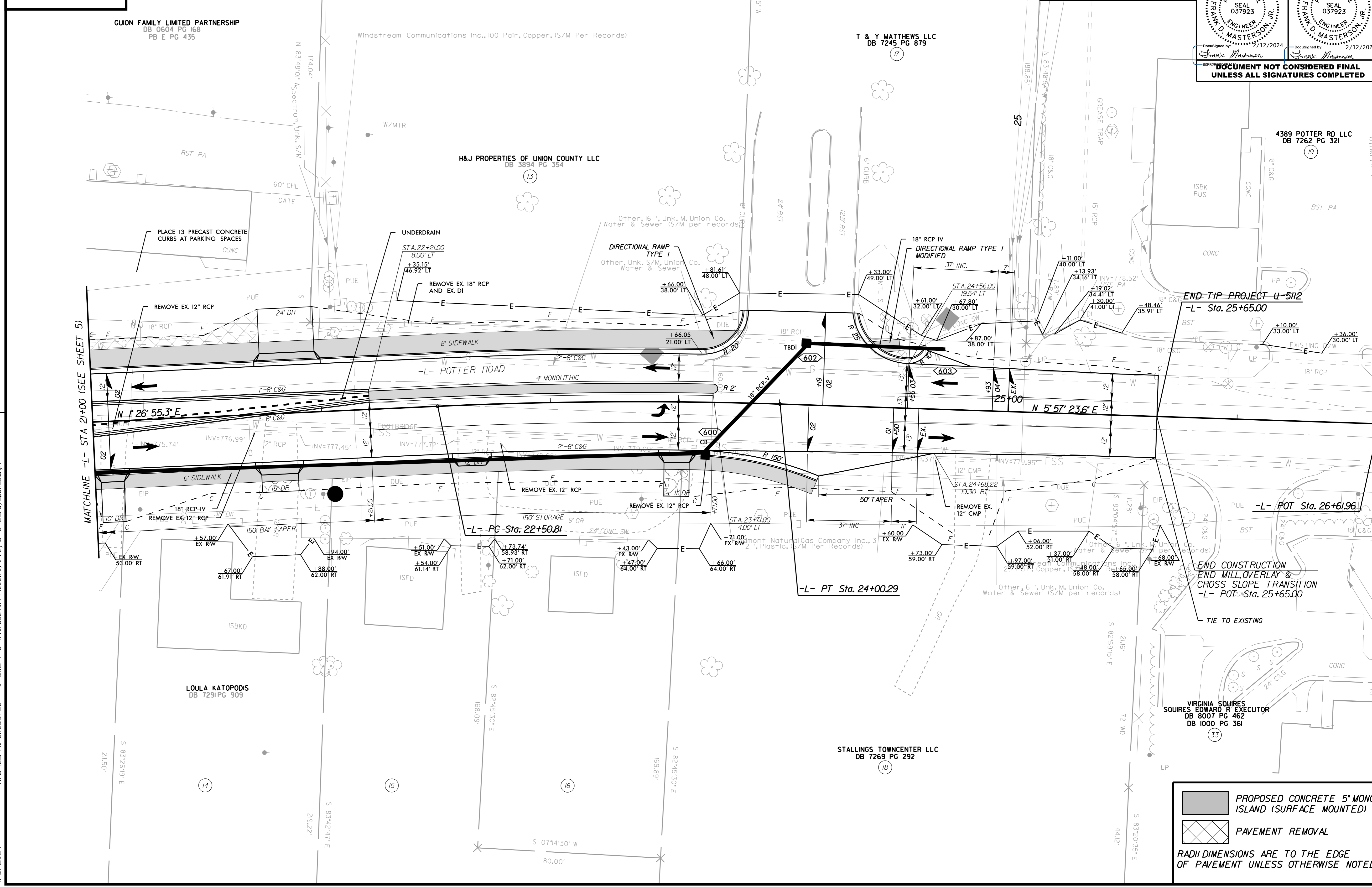


-L-  
 SEE SHEET 11 FOR -L- PROFILE  
 PI Sta 23+25.59  
 $\Delta = 4' 30'' 28.3'' (RT)$   
 $D = 3' 00'' 56.0''$   
 $L = 149.49'$   
 $T = 74.78'$   
 $R = 1,900.00'$

**Kimley»Horn**  
 200 S. TRYON ST. • CHARLOTTE, NC 28202  
 ROADWAY ENGINEER  
 HYDRAULICS ENGINEER  
 PROJECT REFERENCE NO. U-5112 SHEET NO. 6  
 RW SHEET NO. 6  
 NORTH CAROLINA PROFESSIONAL SEAL 037923  
 NORTH CAROLINA PROFESSIONAL SEAL 037923  
 FRANK D. MASTERSON, JR.  
 FRANK D. MASTERSON, JR.  
 DOCUMENT NOT CONSIDERED FINAL UNLESS ALL SIGNATURES COMPLETED

REVISIONS

K:\CHL\PRJ\01036720 - U-5112 (P3 Intersections)\Roadway\Pro\U-5112\_rdy\_psh\_b.dgn 1/3/2024



PROPOSED CONCRETE 5" MONO. ISLAND (SURFACE MOUNTED)  
 PAVEMENT REMOVAL  
 RADII DIMENSIONS ARE TO THE EDGE OF PAVEMENT UNLESS OTHERWISE NOTED