

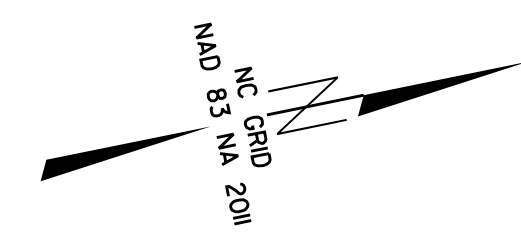
-L-  
PI Sta 15+98.87  
Δ = 27° 36' 53.0" (LT)  
D = 2' 58' 35.1"  
L = 927.79'  
T = 473.09'  
R = 1,925.00'

SEE SHEET 10 FOR -L- PROFILE  
SEE SHEET 12 FOR -YI- PROFILE  
SEE DETAIL 2B-1 FOR CURB  
ALIGNMENTS AND ELEVATIONS

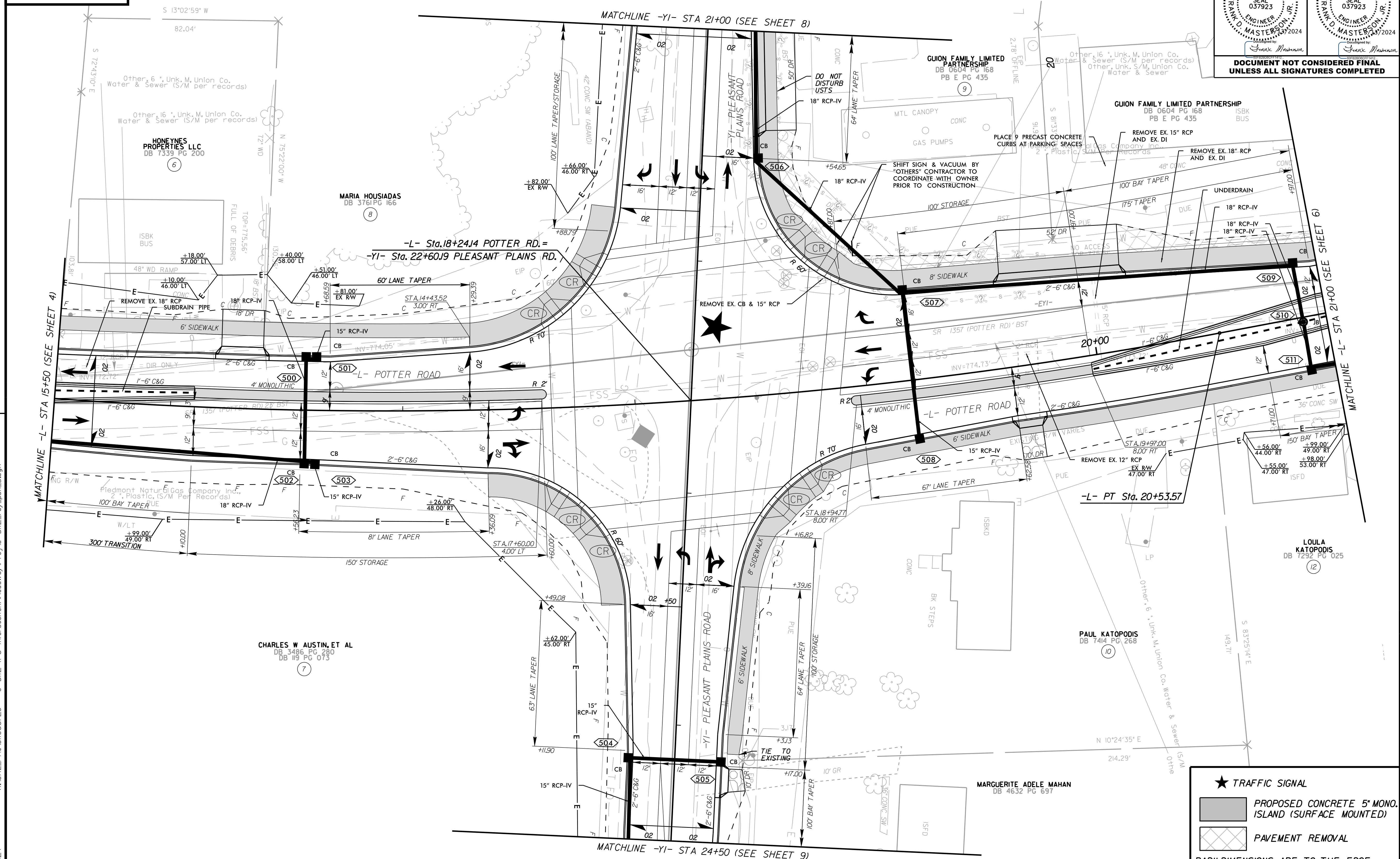
**Kimley»Horn**  
200 S. TRYON ST. • CHARLOTTE, NC 28202  
RIGHT-OF-WAY REV.  
CONST. REV.

PROJECT REFERENCE NO. U-5112	SHEET NO. 5
RW SHEET NO.	HYDRAULICS ENGINEER
ROADWAY ENGINEER	SEAL 037923
PROFESSIONAL ENGINEER	SEAL 037923
FRANK D. MASTERSON, JR.	FRANK D. MASTERSON, JR.
2024	2024

DOCUMENT NOT CONSIDERED FINAL  
UNLESS ALL SIGNATURES COMPLETED



REVISIONS



★ TRAFFIC SIGNAL  
■ PROPOSED CONCRETE 5' MONO. ISLAND (SURFACE MOUNTED)  
▨ PAVEMENT REMOVAL  
RADI DIMENSIONS ARE TO THE EDGE OF PAVEMENT UNLESS OTHERWISE NOTED

3/13/2024 K:\CHL\_PRJ\01036720 - U-5112 (P3 Intersections)\Roadway\Pro\U-5112\_rdy\_psh\_5.dgn