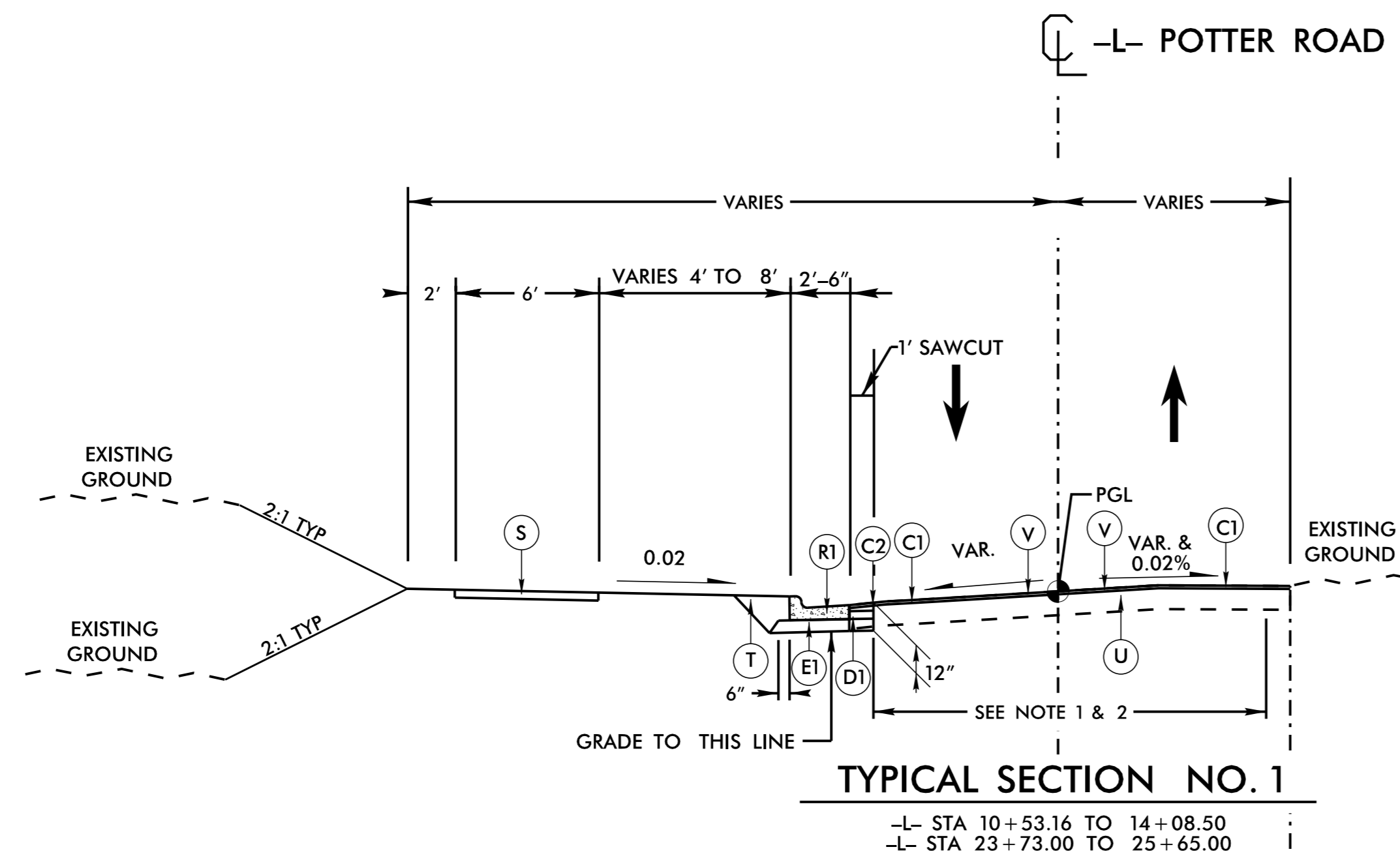
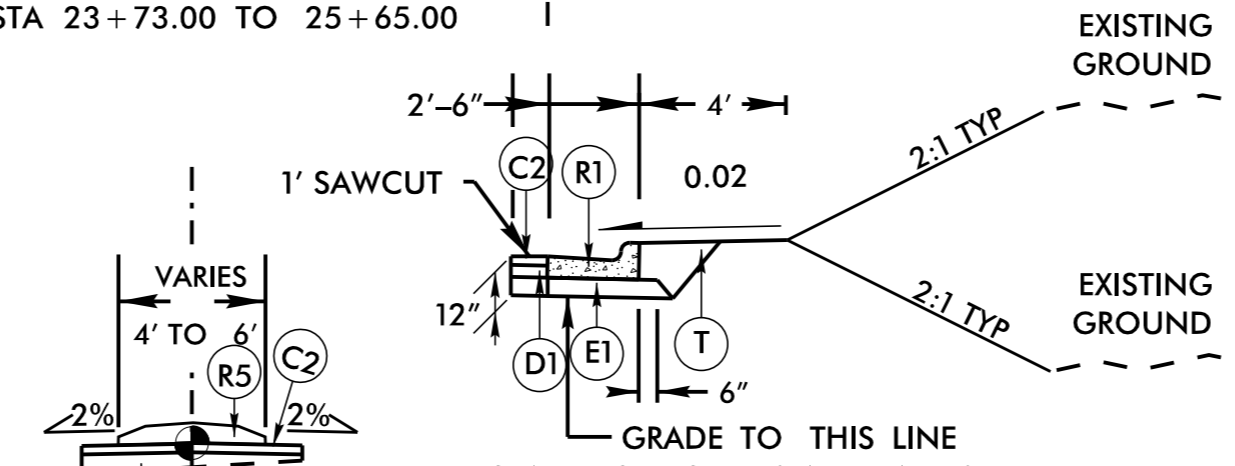


**DOCUMENT NOT CONSIDERED FINAL UNLESS ALL SIGNATURES COMPLETED**

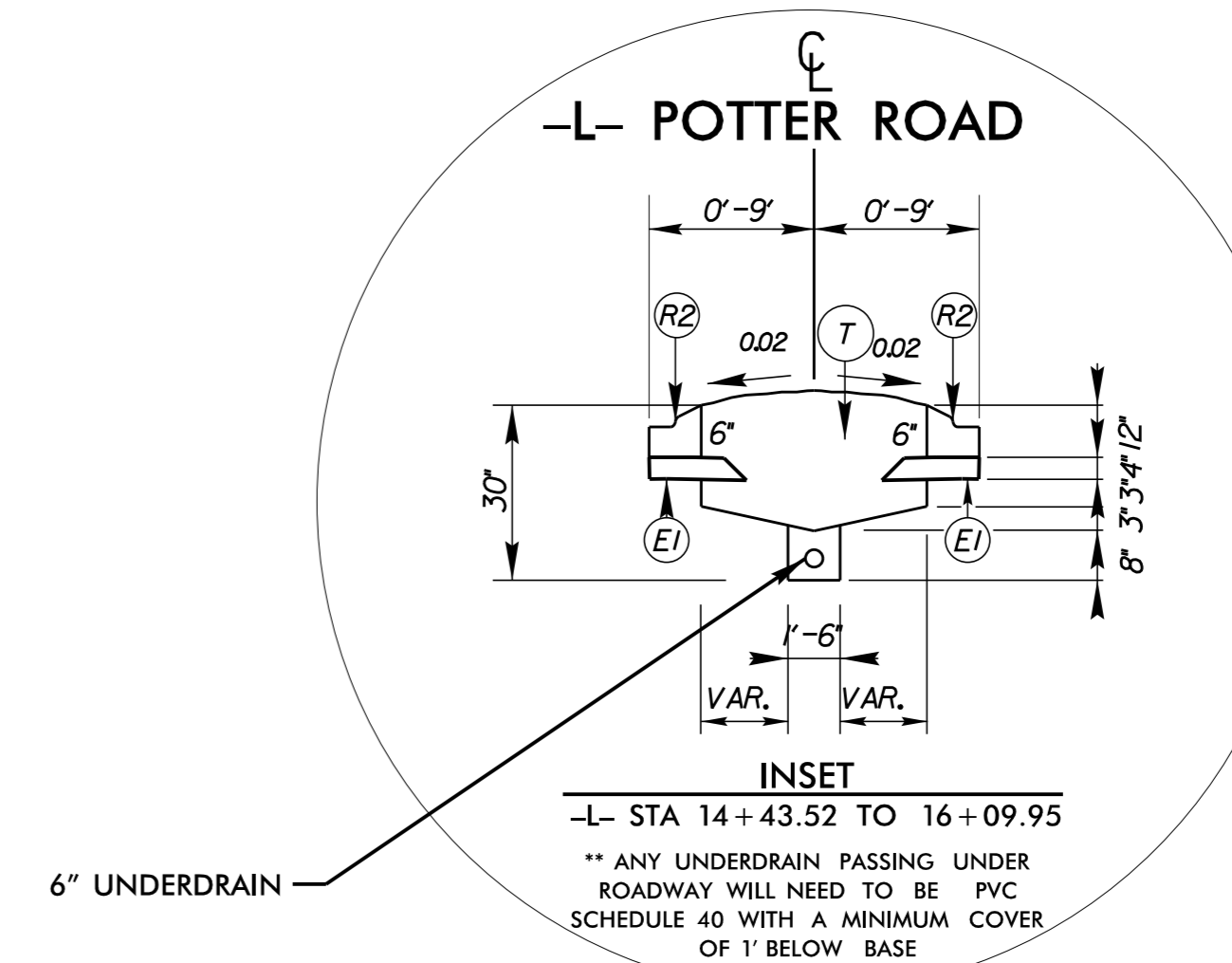


**TYPICAL SECTION NO. 1**  
-L- STA 10+53.16 TO 14+08.50  
-L- STA 23+73.00 TO 25+65.00



**TYPICAL SECTION NO. 1B**  
-L- STA 12+00.82 TO 14+43.52  
-L- STA 23+73.00 TO 24+18.22

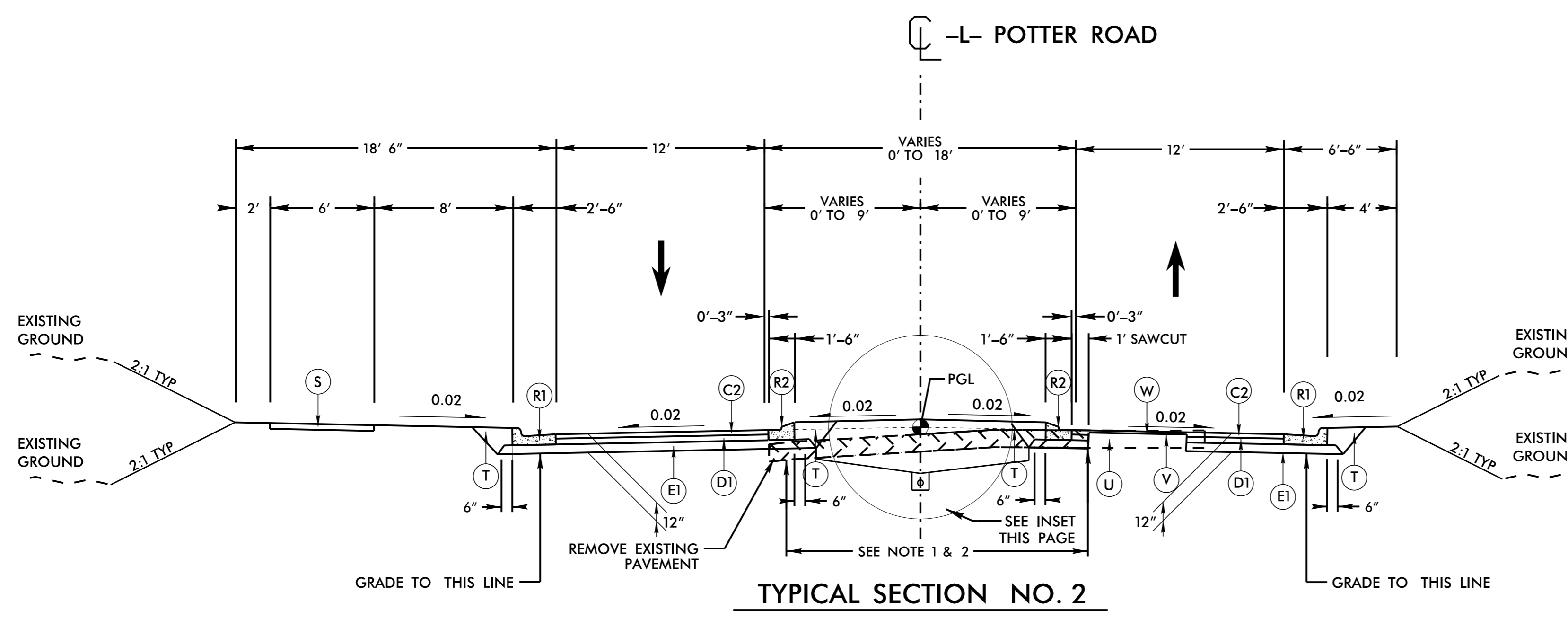
**TYPICAL SECTION NO. 1C**  
-L- STA 14+08.28 TO 14+43.52



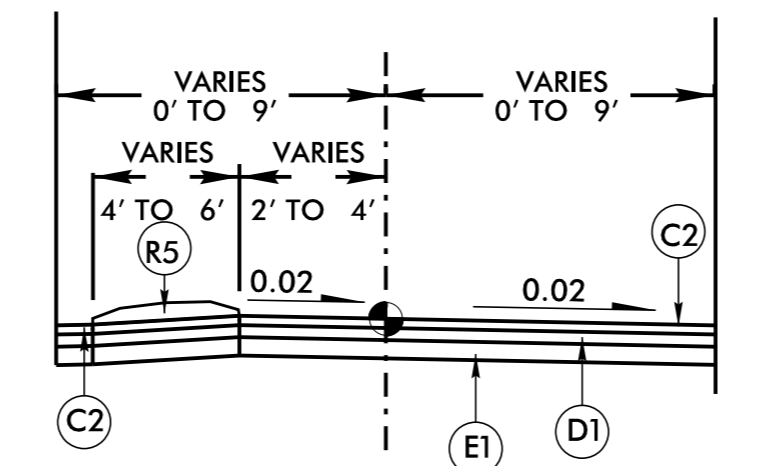
**INSET**  
-L- STA 14+43.52 TO 16+09.95  
\*\* ANY UNDERDRAIN PASSING UNDER ROADWAY WILL NEED TO BE PVC SCHEDULE 40 WITH A MINIMUM COVER OF 1' BELOW BASE

- NOTES:**
1. SEE PLANS FOR EXISTING PAVEMENT LOCATIONS.
  2. SAWCUT EXISTING PAVEMENT TO PROVIDE 1' MINIMUM FULL DEPTH PAVEMENT.
  3. PAVEMENT EDGE SLOPES ARE 1:1 UNLESS OTHERWISE NOTED.
  4. MILL EXISTING ASPHALT PAVEMENT TO A MAX. DEPTH OF 1.5"

REVISIONS



**TYPICAL SECTION NO. 2**  
-L- STA 14+43.52 TO 16+10.00



**TYPICAL SECTION NO. 2B**  
-L- STA 16+10.00 TO 17+62.01

**FINAL PAVEMENT SCHEDULE**

A	PROPOSED APPROX. 6" CONCRETE DRIVEWAY, CLASS A
C1	PROP. APPROX. 1 1/2" ASPHALT CONCRETE SURFACE COURSE, TYPE S9.5B, AT AN AVERAGE RATE OF 165 LBS. PER SQ. YARD.
C2	PROP. APPROX. 3" ASPHALT CONCRETE SURFACE COURSE, TYPE S9.5B, AT AN AVERAGE RATE OF 165 LBS. PER SQ. YARD IN EACH OF TWO LAYERS.
C3	PROP. VAR. DEPTH ASPHALT CONCRETE SURFACE COURSE, TYPE S9.5B, AT AN AVERAGE RATE OF 110 LBS. PER SQ. YARD PER 1" DEPTH TO BE PLACED IN LAYERS NOT TO EXCEED 1.5" IN DEPTH.
D1	PROP. APPROX. 4" ASPHALT CONCRETE INTERMEDIATE COURSE, TYPE I19.0C, AT AN AVERAGE RATE OF 456 LBS. PER SQ. YARD.
D3	PROP. VAR. DEPTH ASPHALT CONCRETE INTERMEDIATE COURSE, TYPE I19.0C, AT AN AVERAGE RATE OF 114 LBS. PER SQ. YARD PER 1" DEPTH TO BE PLACED IN LAYERS NOT LESS THAN 2 1/2" OR GREATER THAN 4" IN DEPTH.
E1	PROP. APPROX. 5" ASPHALT CONCRETE BASE COURSE, TYPE B25.0C, AT AN AVERAGE RATE OF 570 LBS. PER SQ. YARD IN ONE LAYER.
E2	PROP. APPROX. 3" ASPHALT CONCRETE BASE COURSE, TYPE B25.0C, AT AN AVERAGE RATE OF 342 LBS. PER SQ. YARD IN ONE LAYER.
E3	PROP. VAR. DEPTH ASPHALT CONCRETE BASE COURSE, TYPE B25.0C, AT AN AVERAGE RATE OF 114 LBS. PER SQ. YARD PER 1" DEPTH TO BE PLACED IN LAYERS NOT LESS THAN 3" IN DEPTH OR GREATER THAN 5.5" IN DEPTH IN ONE LIFT. NO RESTRICTION ON TOTAL DEPTH.
R1	2'-6" CONCRETE CURB AND GUTTER [NCDOT STD. 846.01]
R2	1'-6" CONCRETE CURB AND GUTTER [NCDOT STD. 846.01]
R5	5" MONOLITHIC CONCRETE ISLAND (SURFACE MOUNTED) [SEE NCDOT STD. 852.01]
S	4" CONCRETE SIDEWALK [NCDOT STD. 848.01]
T	EARTH MATERIAL
U	EXISTING PAVEMENT
V	MILLING ASPHALT PAVEMENT, 1.5" DEPTH
V2	INCIDENTAL MILLING
W	ASPHALT WEDGING [SEE DETAIL SHEET 2A-3]