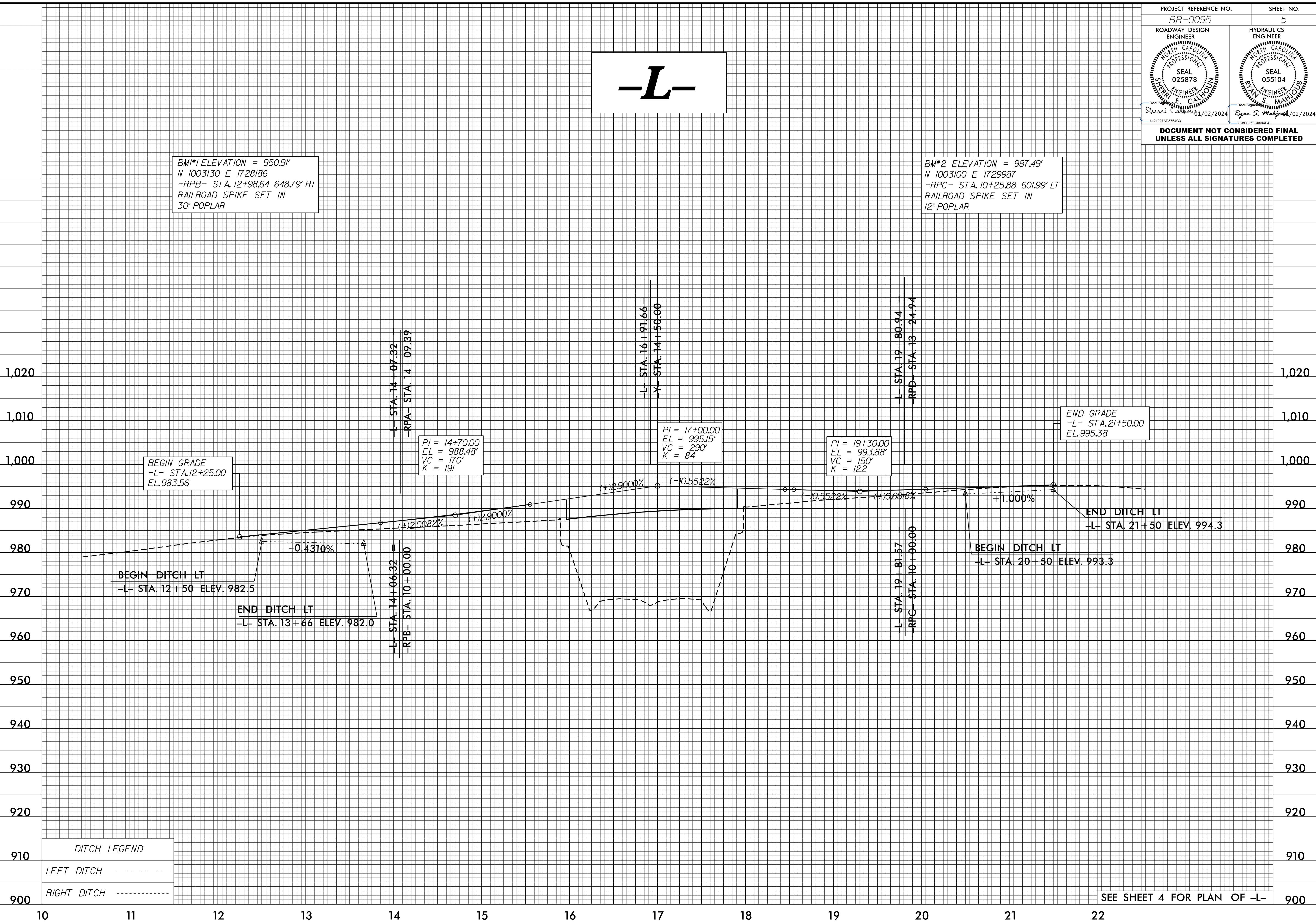


-L-

BM*1 ELEVATION = 950.91'
N 1003130 E 1728186
-RPB- STA. 12+98.64 648.79' RT
RAILROAD SPIKE SET IN
30" POPLAR

BM*2 ELEVATION = 987.49'
N 1003100 E 1729987
-RPC- STA. 10+25.88 601.99' LT
RAILROAD SPIKE SET IN
12" POPLAR



DITCH LEGEND	
LEFT DITCH	-----
RIGHT DITCH	-----

SEE SHEET 4 FOR PLAN OF -L-

5/14/99
PC: JAN-2024 10:28 BR0095_Rdy_p1105.dgn
\$\$\$\$\$ (SHEETNAME) \$\$\$