


T.I.P.: BR-0026

CONTRACT: C204792

**STATE OF NORTH CAROLINA
DEPARTMENT OF TRANSPORTATION**

**SIGNING PLAN
JOHNSTON COUNTY**

LOCATION: REPLACE BRIDGE (500050) ON NC-210 OVER MIDDLE CREEK

TIP NO. BR - 0026	SHEET NO. SIGN - 1
APPROVED: <u>Joshua Q. Roemer</u> <small>BY ARD01C0666403</small>	
DATE: 11/29/2023	
SEAL 	
DOCUMENT NOT CONSIDERED FINAL UNLESS ALL SIGNATURES COMPLETED	

ROADWAY STANDARD DRAWING

THE FOLLOWING ROADWAY STANDARDS AS APPEAR IN "ROADWAY STANDARD DRAWINGS" - N.C. DEPARTMENT OF TRANSPORTATION - RALEIGH, N.C., DATED JANUARY 2024 ARE APPLICABLE TO THIS PROJECT AND BY REFERENCE HEREBY ARE CONSIDERED A PART OF THESE PLANS:

STD. NO.	TITLE
902.10	FOUNDATIONS FOR GROUND MOUNTED SIGNS
903.10	GROUND MOUNTED SIGN SUPPORTS
904.10	ORIENTATION OF GROUND MOUNTED SIGNS
904.50	MOUNTING OF TYPE 'D', 'E' AND 'F' SIGNS ON 'U' CHANNEL POSTS

GENERAL NOTES

- . SIGNS FURNISHED BY CONTRACTOR
- . CONFIRM IN WRITING AT LEAST 4 MONTHS IN ADVANCE, THE ACTUAL DATE THE DEPARTMENT FURNISHED SIGNS WILL BE REQUIRED.
- . IF REMOVAL OR RELOCATION OF SIGNS ON PRIVATE STREET (NON-STATE MAINTAINED) IS REQUIRED DUE TO CONSTRUCTION, THE CONTRACTOR SHALL INFORM THE ENGINEER. THE WORK WILL BE COMPLETED BY OTHERS.
- . WHEN NOT STATIONED OR DIMENSIONED ON PLANS, ALL 'E' AND 'F' SIGNS SHALL BE FIELD LOCATED BY THE ENGINEER
- . ALL EXISTING SIGNS ON "U" CHANNEL POST WITHIN THE PROJECT LIMITS SHALL BE REMOVED AND DISPOSED OF UNLESS OTHERWISE NOTED ON PLANS.
- . WHEN EXISTING SIGNS ARE REMOVED AND INSTALLED ON NEW SUPPORTS, THE RE-ERECTION SHALL IMMEDIATELY FOLLOW THE REMOVAL.
- . THE BACKGROUND FOR TYPE E & F SIGNS SHALL BE TYPE C REFLECTIVE SHEETING.
- . SEE ROADWAY PLANS FOR GUARDRAIL DETAILS.

SUMMARY OF QUANTITIES

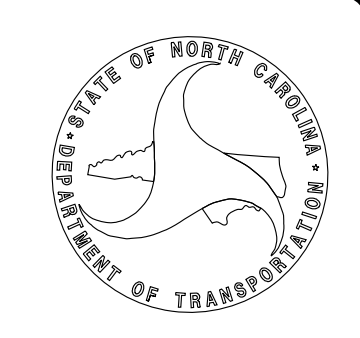
ITEM NO.		ITEM DESCRIPTION	QUANTITY	UNIT
DESC. NO.	SECT. NO.			
4025000000	901	CONTRACTOR FURNISHED, TYPE E SIGN	7	S.F.
4072000000	903	SUPPORTS, 3 LB STEEL U-CHANNEL	14	L.F.
4102000000	904	SIGN ERECTION, TYPE E	1	EA.
4155000000	907	DISPOSAL OF SIGN SYSTEM, U-CHANNEL	1	EA.

INDEX

SHEET NO.	DESCRIPTION
SIGN-1	TITLE SHEET
SIGN-2	SIGN DETAIL SHEET

PLAN SUBMITTED TO: NCDOT Signing and Delineation Unit

<u>MITCH EATON, PE</u>	SIGNING AND DELINEATION REGIONAL ENGINEER
<u>ANDREW M. SCOTT</u>	SIGNING AND DELINEATION DESIGN ENGINEER

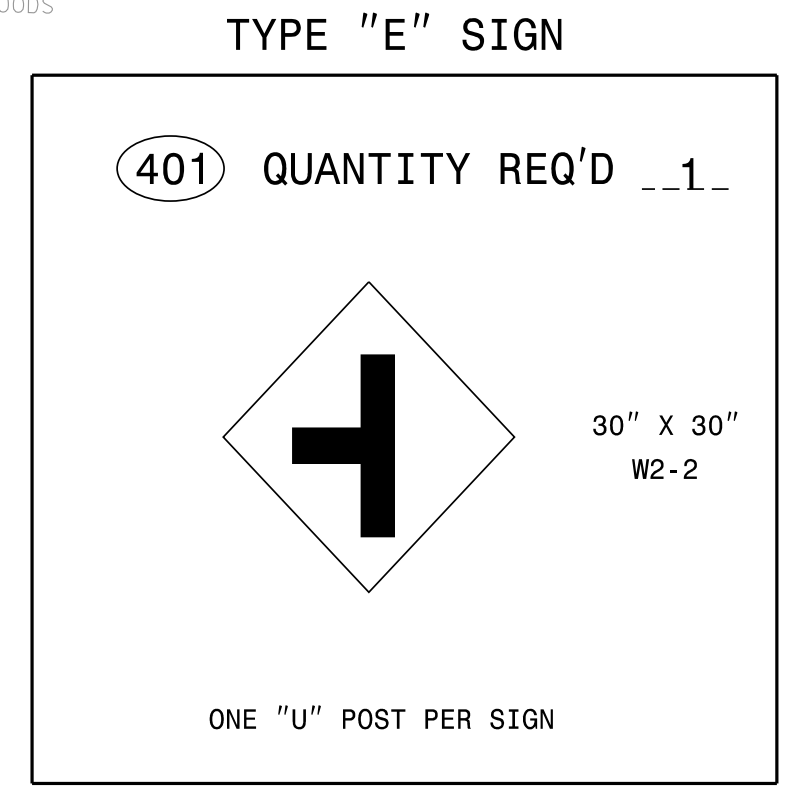
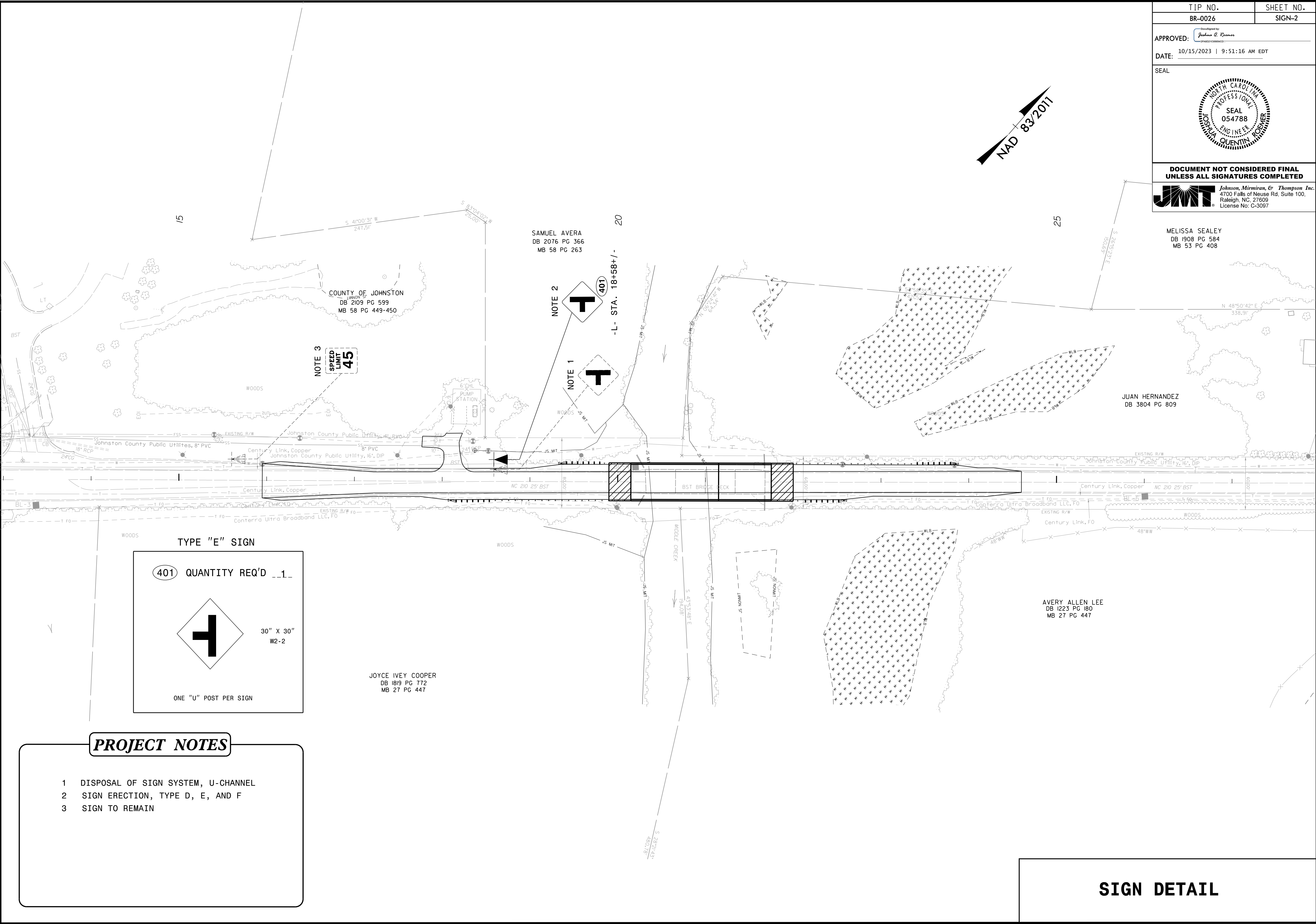


PLAN PREPARED BY: Johnson, Mirmiran, & Thompson

<u>PAUL GARRETT, PE</u>	PROJECT ENGINEER
<u>JOSHUA ROEMER, PE</u>	PROJECT DESIGN ENGINEER



TIP NO. BR-0026	SHEET NO. SIGN-2
APPROVED: <i>Jonathan Q. Roman</i>	
DATE: 10/15/2023 9:51:16 AM EDT	
SEAL	
DOCUMENT NOT CONSIDERED FINAL UNLESS ALL SIGNATURES COMPLETED	
JOHNSON, MIRIRAN, & THOMPSON, INC. 4700 Falls of Neuse Rd, Suite 100, Raleigh, NC, 27609 License No: C-3097	



- PROJECT NOTES**

 - 1 DISPOSAL OF SIGN SYSTEM, U-CHANNEL
 - 2 SIGN ERECTION, TYPE D, E, AND F
 - 3 SIGN TO REMAIN

SIGN DETAIL

10/15/2023 7:57:48 AM
 User: jfoamer