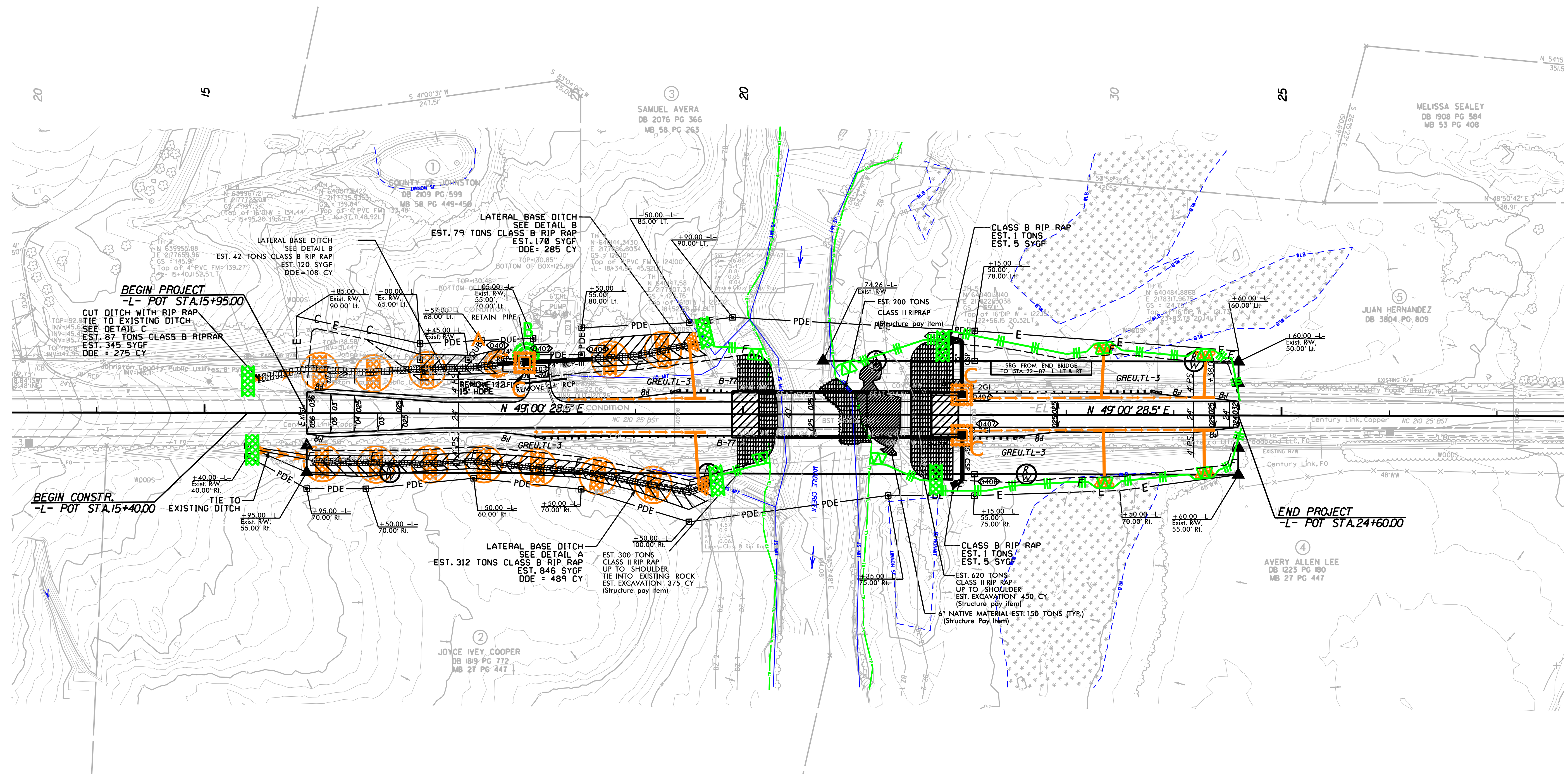
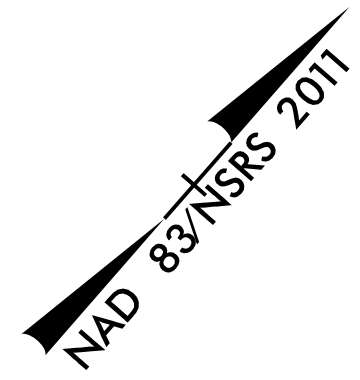


NOTE: UTILIZE FABRIC INSERT INLET PROTECTION IN LIEU OF TYPE C INLET PROTECTION IN CATCH BASINS WHERE WATER MIGHT POND ON ROADWAY USED BY PUBLIC TRAFFIC AS DIRECTED BY THE ENGINEER.



Place Matting for Erosion Control on Slopes as Work Allows.

8/17/99  
10/3/2023 3:10:51 PM  
C:\Design\BR0026\_ENV\_EC-5.dgn  
User: jromer