

09/28/24

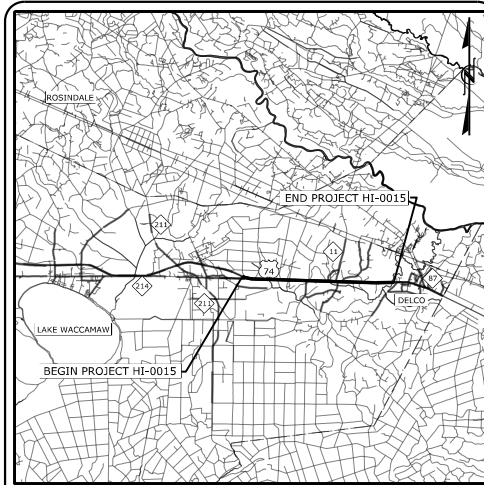
STATE	STATE PROJECT REFERENCE NO.	SHEET NO.	TOTAL SHEETS
N.C.	HI-0015	1	
STATE PROJ. NO.	F.A. PROJ. NO.	DESCRIPTION	
49986.1.1	0074245	PE	
49986.3.1	0074245	CONST	

STATE OF NORTH CAROLINA
DIVISION OF HIGHWAYS

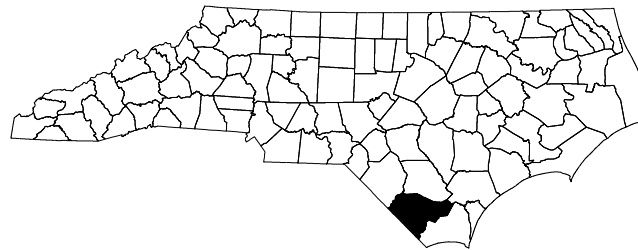
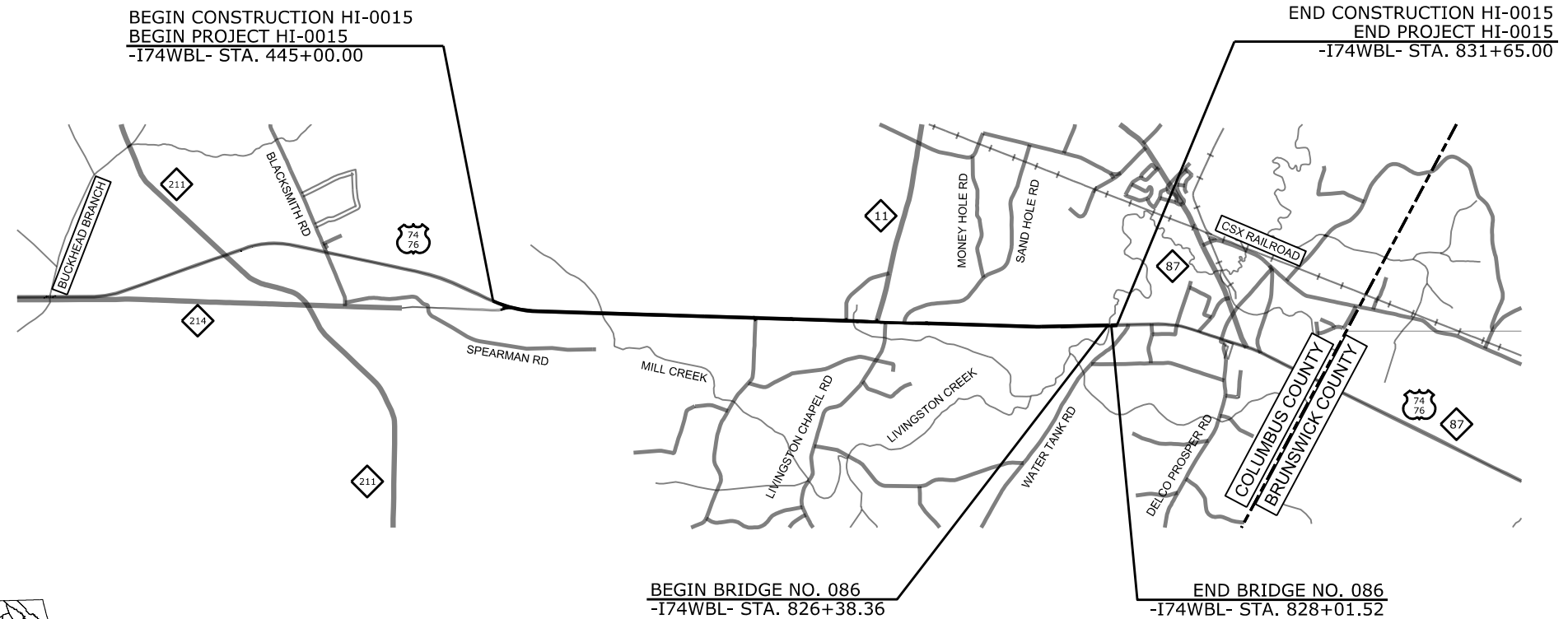
COLUMBUS COUNTY

LOCATION: US 74 (FUTURE I-74) FROM WEST OF NC 214
TO WEST OF WATER TANK ROAD (SR 1824)

TYPE OF WORK: PAVEMENT & STRUCTURES REHABILITATION & DRAINAGE



VICINITY MAP
N.T.S.



TIP PROJECT: HI-0015

CONTRACT: C204912



Whitman, Requardt & Associates, LLP
1201 Edwards Mill Road, Suite 320, Raleigh, North Carolina 27606

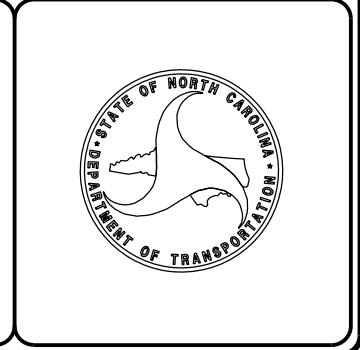
DESIGN DATA	
AADT 2021 =	17,000
V =	60 MPH
FUNC CLASS = PRINCIPAL ARTERIAL	

PROJECT LENGTH	
LENGTH ROADWAY TIP PROJECT HI-0015 WBL =	7.292 MI
LENGTH STRUCTURE TIP PROJECT HI-0015 WBL =	0.031 MI
TOTAL LENGTH OF TIP PROJECT HI-0015 WBL =	7.323 MI

Prepared for the Office of: DIVISION OF HIGHWAYS 431 Transportation Dr, Fayetteville NC, 28301	
2024 STANDARD SPECIFICATIONS	
RIGHT OF WAY DATE:	N/A
LETTING DATE:	FEBRUARY 20, 2024
ALEX HENDERSON NGDOT CONTACT PROJECT MANAGER	
DOUGLAS SAUNDERS, PE PROJECT ENGINEER	
WILLIAM TILLITT, PE PROJECT DESIGN ENGINEER	

11/29/2023

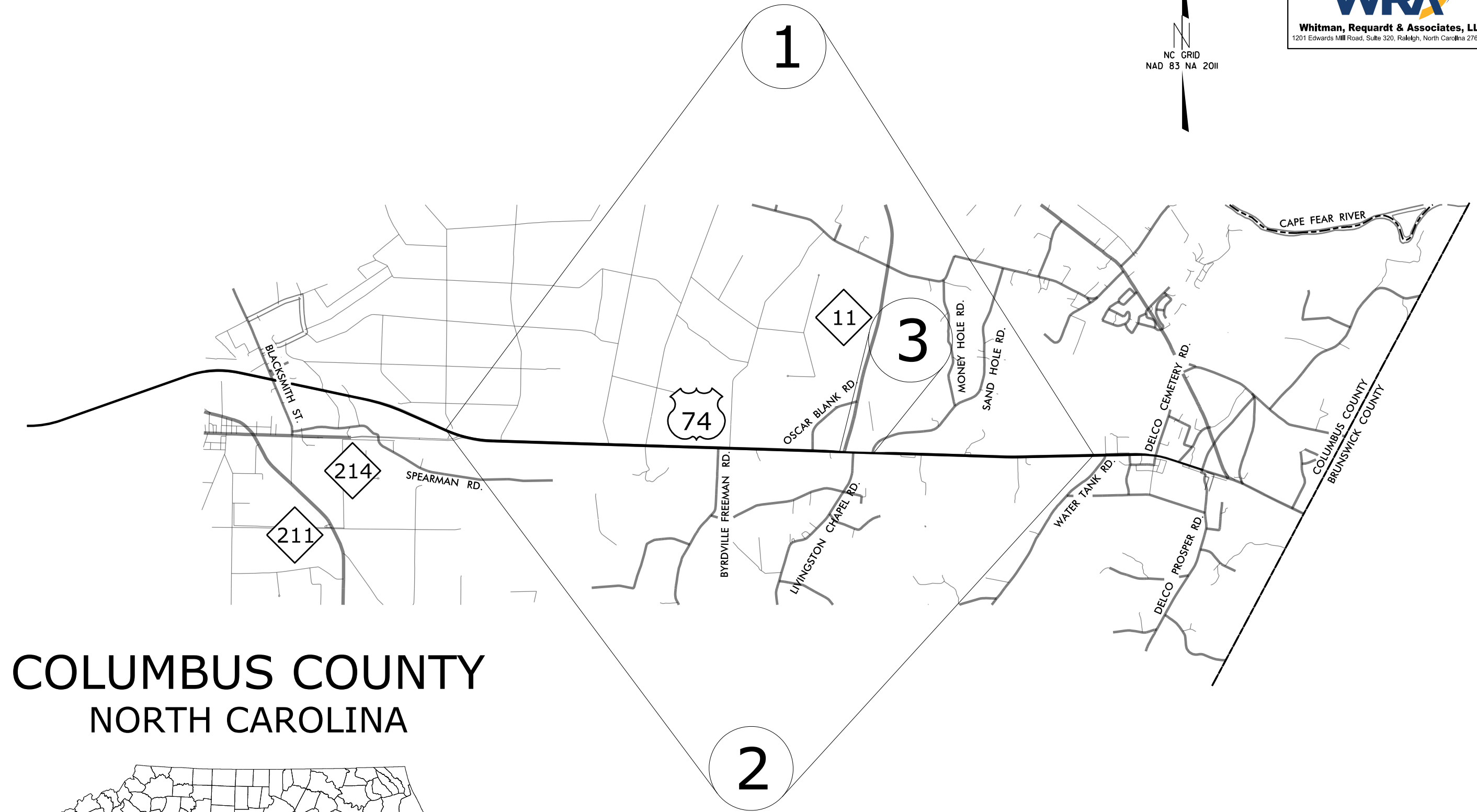
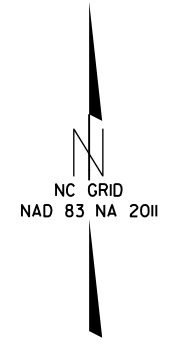
DocuSigned by:
William E. Tillitt
SIGNATURE: WILLIAM E. TILLITT, P.E.



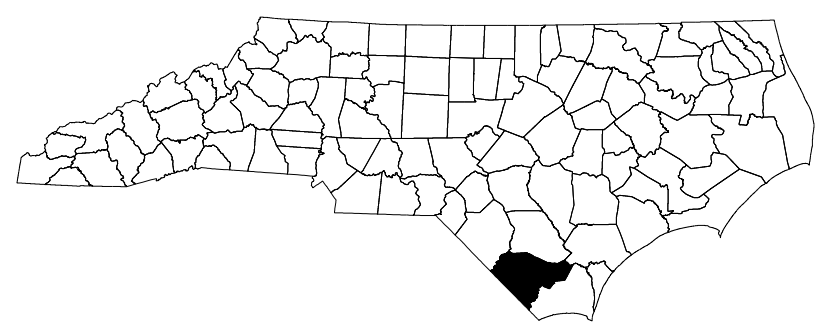
8:25:46 AM N:\48006-002\CADD\NCDDOT\Roadway\Proj\HI-0015\HI-0015_RDY_TSH.dgn W.Tillitt



Whitman, Requardt & Associates, LLP
1201 Edwards Mill Road, Suite 320, Raleigh, North Carolina 27606




COLUMBUS COUNTY NORTH CAROLINA



8/17/99
8:52:16 AM
N:\48006-002\CADD\NCDDOT\Roadway\Proj\HI-0015\HI-0015_RDY_MAP-02.dgn

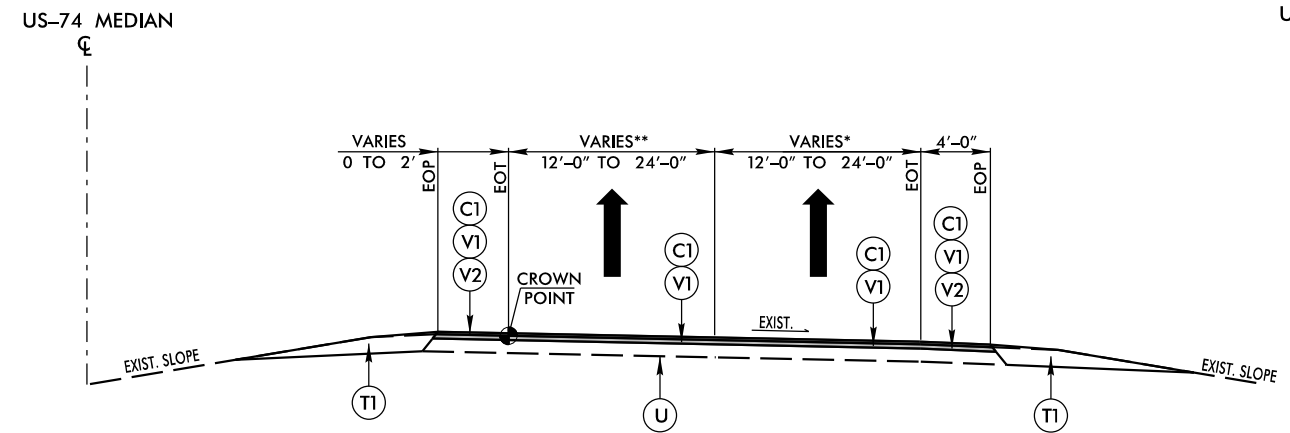
8/17/99

PROJECT REFERENCE NO.	SHEET NO.
HI-0015	2A-1
R/W SHEET NO.	



Whitman, Reardon & Associates, LLP
1201 Edwards Mill Road, Suite 320, Raleigh, North Carolina 27606

NOT TO SCALE

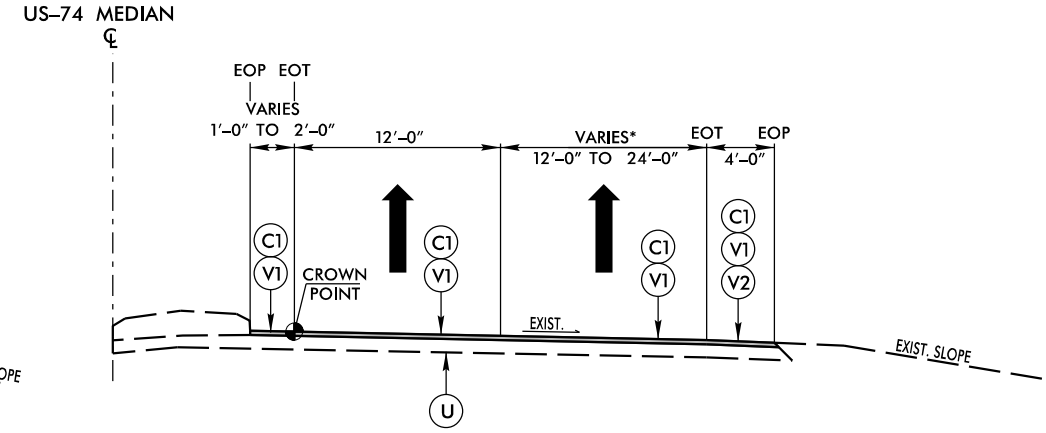


TYPICAL SECTION NO. 1

US-74 EB STA. 444+67.68 TO 680+16.17
US-74 EB STA. 700+51.95 TO 831+55.00

US-74 WB STA. 445+00.00 TO 680+29.01
US-74 WB STA. 700+64.23 TO 826+38.36 (BEGIN BRIDGE)
US-74 WB STA. 828+01.52 (END BRIDGE) TO 831+65.00
MAPS 1-2

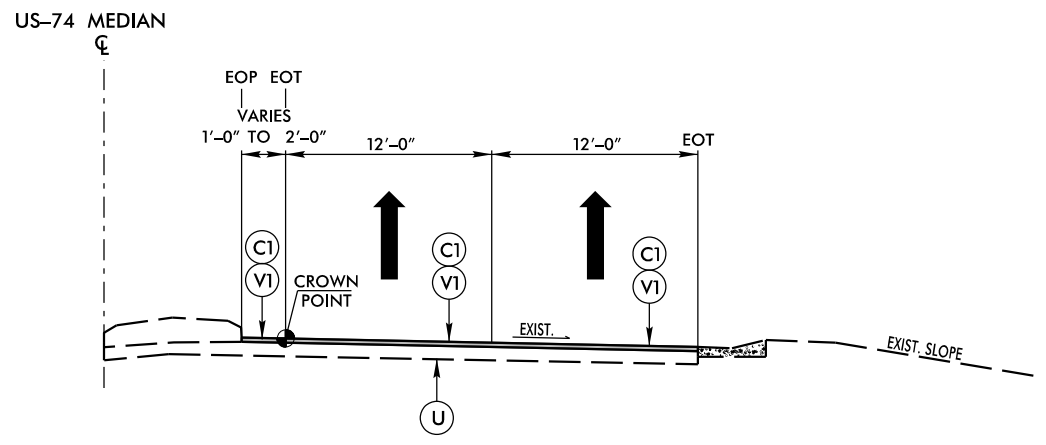
*ONLY MILL 12' FOR EACH THROUGH LANE FOR
EBL STA. 599+89.00 TO 722+30.30
WBL STA. 600+00.00 TO 722+42.75



TYPICAL SECTION NO. 2

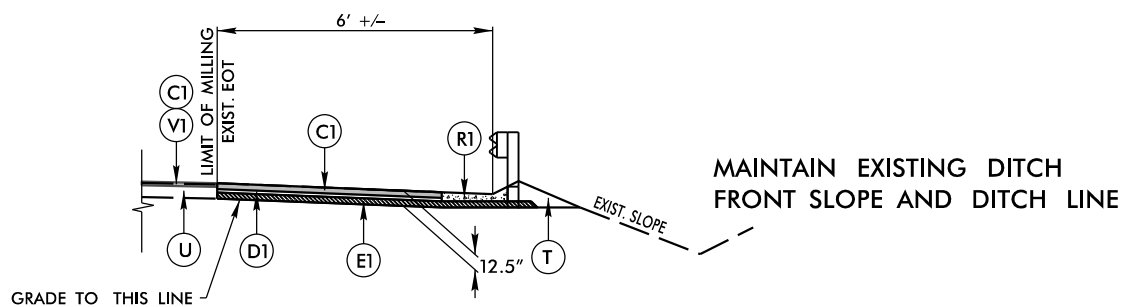
US-74 EB STA. 680+16.17 TO 700+51.95

US-74 WB STA. 680+29.01 TO 685+87.63
US-74 WB STA. 698+08.31 TO 700+64.23
MAP 3



TYPICAL SECTION NO. 3

US-74 WB STA. 685+87.63 TO 698+08.31
MAP 3



SHOULDER BERM GUTTER DETAIL

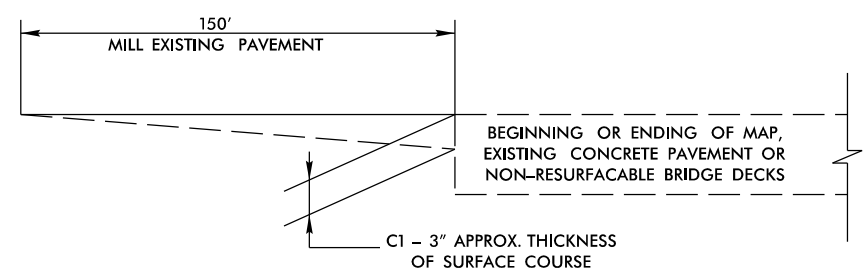
US-74 EB STA. 796+50.00 TO 814+00.00
US-74 EB STA. 824+44.00 TO 826+50.00
US-74 EB STA. 827+49.00 TO 831+55.00

*SAW CUT AND REMOVE EXISTING PAVEMENT TO ALLOW 6' MINIMUM WIDENING

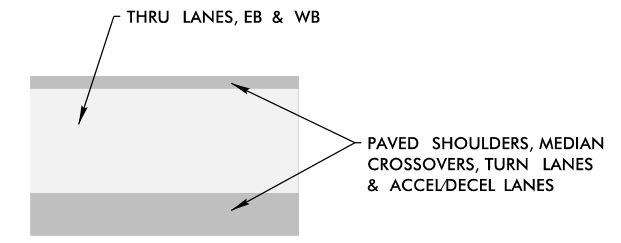
NOTES:

- *PAVEMENT REHABILITATION FOR TURN LANES WILL INCLUDE ADDITIONAL WIDTH. (SEE PLANS FOR LIMITS)
- **PAVEMENT REHABILITATION FOR MEDIAN CROSSOVERS AND LEFT TURN LANES WILL INCLUDE ADDITIONAL WIDTH. (SEE PLANS FOR LIMITS)
- LIMITS OF TYPICAL SECTIONS INDICATED ON THE PLANS ARE APPROXIMATE. TYPICAL SECTION LIMITS AND TRANSITIONS TO BE VERIFIED BY THE ENGINEER IN FIELD.

PAVE SHOULDERS FOR VEHICLE PULL-OFF AREA AS DIRECTED BY ENGINEER.
MILLED SECTIONS SHALL BE RESURFACED IN THE SAME NIGHT.



INCIDENTAL MILLING AT PAVEMENT TIE-INS



PAVEMENT REHABILITATION LIMITS LEGEND

SEE PLAN SHEETS

PAVEMENT SCHEDULE	
C1	PROP. APPROX. 3" ASPHALT CONCRETE SURFACE COURSE, TYPE S9.5C, AT AN AVERAGE RATE OF 168 LBS. PER SQ. YARD IN EACH OF TWO LAYERS
D1	PROP. APPROX. 4" ASPHALT CONCRETE INTERMEDIATE COURSE, TYPE I19.0C, AT AN AVERAGE RATE OF 456 LBS. PER SQ. YARD
E1	PROP. APPROX. 5.5" ASPHALT CONCRETE BASE COURSE, TYPE B25.0C, AT AN AVERAGE RATE OF 627 LBS. PER SQ. YARD
R1	PROPOSED SHOULDER BERM GUTTER
T	EARTH MATERIAL
T1	SHOULDER RECONSTRUCTION USING AGGREGATE SHOULDER BORROW AS DIRECTED BY ENGINEER
U	EXISTING ASPHALT PAVEMENT
V1	3" MILLING
V2	MILLED RUMBLE STRIPS

NOTE: PAVEMENT EDGE SLOPES ARE 1:1 UNLESS SHOWN OTHERWISE. SEE SHOULDER WEDGE DETAIL.

I:\4915 PM N:\48006-002\CADD\NCDDT\Roadway\ProJ\HI-0015\HI-0015_RDY_TYP.dgn

SUMMARY OF QUANTITIES - ROADWAY

PROJECT NO	COUNTY	MAP NO	ROUTE	DESCRIPTION	TYP NO	LANES	LANE TYPE	FINAL SURFACE TESTING REQUIRED	WARM MIX ASPHALT REQUIRED	LENGTH	WIDTH	000100000-N	000400000-N	010600000-E	015600000-E	124500000-E	126000000-E	
												MOBILIZATION	CONSTRUCTION SURVEYING	BORROW EXCAVATION	REMOVAL OF EXISTING ASPHALT PAVEMENT	SHOULDER RECONSTRUCTION	AGGREGATE SHOULDER BORROW	
											MI	FT	LS	LS	CY	SY	SMI	TON
49986.3.1	Columbus	1	US 74 WB	FROM WEST OF NC 214 TO WEST OF WATER TANK ROAD	1	2	2WD	NO	NO	7.29	24							
		2	US 74 EB	FROM WEST OF NC 214 TO WEST OF WATER TANK ROAD	1	2	2WD	NO	NO	7.31	24			400				
TOTAL FOR MAP NO. 1											7.29							
TOTAL FOR MAP NO. 2												7.31						
GRAND TOTAL											14.60		1	1	400	1,580	27.25	10,075
GRAND TOTAL											1		1	400	1,580	27.25	10,075	

PROJECT NO	COUNTY	MAP NO	ROUTE	DESCRIPTION	TYP NO	LANES	LANE TYPE	FINAL SURFACE TESTING REQUIRED	WARM MIX ASPHALT REQUIRED	LENGTH	WIDTH	129700000-E	133000000-E	149100000-E	150300000-E	152300000-E	157500000-E	184000000-E	
												3" MILLING	INCIDENTAL MILLING	ASPHALT CONC BASE COURSE, TYPE B25.0C	ASPHALT CONC INTERMEDIATE COURSE, TYPE I19.0C	SURFACE COURSE, S9.5C	ASPHALT BINDER FOR PLANT MIX	MILLED RUMBLE STRIPS (ASPHALT CONCRETE)	
											MI	FT	SY	SY	TONS	TONS	TONS	TONS	LF
49986.3.1	Columbus	1	US 74 WB	FROM WEST OF NC 214 TO WEST OF WATER TANK ROAD	1	2	2WD	NO	NO	7.29	24	132,760				24,021		66,072	
		2	US 74 EB	FROM WEST OF NC 214 TO WEST OF WATER TANK ROAD	1	2	2WD	NO	NO	7.31	24	141,216	790	360	25,159		64,595		
TOTAL FOR MAP NO. 1											7.29		132,760			24,021		66,072	
TOTAL FOR MAP NO. 2												7.31	141,216			25,159		64,595	
GRAND TOTAL											14.60		273,976	4,340	790	49,180		130,667	
GRAND TOTAL													273,980	4,340	790	49,180		130,670	

PROJECT NO	COUNTY	MAP NO	ROUTE	DESCRIPTION	TYP NO	LANES	LANE TYPE	FINAL SURFACE TESTING REQUIRED	WARM MIX ASPHALT REQUIRED	LENGTH	WIDTH	255600000-E	303000000-E	315000000-N	321000000-N	321500000-N	328700000-N	336000000-E	
												SHOULDER BERM GUTTER	STEEL BEAM GUARDRAIL	ADDITIONAL GUARDRAIL POSTS	GUARDRAIL END UNITS, TYPE CAT-1	GUARDRAIL ANCHOR UNITS, TYPE III	GUARDRAIL END UNITS, TYPE TL-3	REMOVE EXISTING GUARDRAIL	
											MI	FT	LF	LF	EA	EA	EA	EA	LF
49986.3.1	Columbus	1	US 74 WB	FROM WEST OF NC 214 TO WEST OF WATER TANK ROAD	1	2	2WD	NO	NO	7.29	24								
		2	US 74 EB	FROM WEST OF NC 214 TO WEST OF WATER TANK ROAD	1	2	2WD	NO	NO	7.31	24	2,362							
TOTAL FOR MAP NO. 1											7.29								
TOTAL FOR MAP NO. 2												7.31	2,362						
GRAND TOTAL											14.60		2,362	3,675	25	6	6	10	3,425
GRAND TOTAL													2,365	3,675	25	6	6	10	3,425

SUMMARY OF QUANTITIES - DRAINAGE

PROJECT NO	COUNTY	DRAINAGE ITEM NO	PLAN SHEET	ROUTE	Hydraulics Recommendation	Structure depth	01000000-E	03100000-E	00210000-E	023520000-E	023585000-E	027200000-E	027800000-E	028400000-E	040200000-E	045300000-E	045300000-E	045300000-E	09800000-E	09800000-E	099200000-E	099400000-N	
							BORROW EXCAVATION	FOUNDATION CONDITIONING MATERIAL, MINOR STRUCTURES	FOUNDATION	15" DRAINAGE PIPE	15" DRAINAGE PIPE ELBOWS	18" RC PIPE CULVERTS, CLASS III	24" RC PIPE CULVERTS, CLASS III	30" RC PIPE CULVERTS, CLASS III	48" RC PIPE CULVERTS, CLASS III	15" PIPE END SECTION	18" PIPE END SECTION	30" PIPE END SECTION	GENERIC PIPE ITEM - 18" PIPE REHABILITATION	GENERIC PIPE ITEM - PRE INSTALLATION INSPECTION	GENERIC PIPE ITEM - DE-WATERING	PIPE CLEAN OUT	
CY	TON	SY	LF	EA	LF	LF	LF	EA	EA	EA	EA	EA	EA	EA	EA	EA	EA	EA	EA	EA	EA	EA	
		1	4	464-65 WBL Lt	Remove and replace 18" concrete Flared End Section (FES) and 4' of 18" rcp with concrete collar	N/A	0.3	0.4	1.3			4					1						
		2	4	474-60 WBL Lt	Remove and replace 15" FES	N/A										1							
		3	4	479-50 WBL Lt	Remove and replace 18" FES and 4' of 18" rcp with concrete collar	N/A	0.3	0.4	1.3			4					1						
		4	5	499-40 WBL Lt	Line 70' of 18" rcp	N/A													70	70	1	1	
		5	5	505-60 WBL Lt	Remove and replace 18" FES and 16' of 18" rcp with concrete collar.	N/A	0.7	1.7	5.3			16					1						
		6	5	505-60 WBL Lt	Remove and replace 18" FES and 16' of 18" rcp with concrete collar. Line 44' of 18" rcp	N/A	0.7	1.7	5.3			16					1		44	44	1	1	
		7	5	524-80 EBL Rt	Extend 4' of 24" rcp with concrete collar	N/A	0.4						4										
		8	7	600-60 WBL Lt	Remove and replace 18" FES	N/A											1						
		9	7	615-20 WBL Lt	Remove and replace 18" FES and 4' of 18" rcp with concrete collar	N/A	0.3	0.4	1.3			4					1						
		10	7	615-10 EBL Rt	Remove and replace 4' of 18" rcp with concrete collar	N/A	0.3	0.4	1.3			4											
		11	7	620-10 WBL Lt	Remove and replace 18" FES and 4' of 18" rcp with concrete collar	N/A	0.3	0.4	1.3			4					1						
		12	8	639-05 WBL Lt	Remove and replace 8' of 18" rcp with concrete collar	N/A	0.3	0.9	2.7			8											
		13	8	644-80 EBL Rt	Extend 4' of 24" rcp with concrete collar	N/A	0.4						4										
		14	8	657-50 EBL Rt	Extend 4x3 RCBC with JB and 8' of 48" RCP	8'	2.1	0.9	2.7						8								
		15	9	690-85 EBL Rt	Remove and replace 4' of 24" rcp extend with JB	6'	1.1	0.4	1.3				4										
		16	10	729-60 WBL Lt	Remove and replace 18" FES and 4' of 18" rcp with concrete collar	N/A	0.3	0.4	1.3			4					1						
		17	11	765-30 WBL Lt	Remove and replace 28' 30" FES and 4' of 28' 30" rcp's with concrete collars	N/A	0.3	0.8	2.7					8			2						
		18	11	777-68 WBL Lt	Line 64' of 18" rcp	N/A													64	64	1	1	
		19	11	786-65 WBL Lt	Remove and replace 30" FES and 4' of 30" rcp with concrete collar	N/A	0.4	0.4	1.3				4				1						
		20	11	798-50 WBL Lt to 799-65 WBL Lt	Remove and replace 115' of 6" conc ditch	N/A																	
		21	11	799-65 WBL Lt	Remove and replace 18" FES and 8' of 18" rcp with concrete collar. Line 56' of 18" rcp	N/A	0.3	0.9	2.7			8					1		56	56	1	1	
		22	12	818-60 WBL Lt	Remove and replace 24' of 18" rcp with concrete collar. Line 40' of 18" rcp	N/A	1.0	2.6	8.0			24						40	40	1	1		
		1101	11	798-00 EBL Rt	Prop 2G with 20' of 15" drainage pipe with 2 elbows					20.0	2												
		1102	11	798-00 EBL Rt	Prop erosion class B rip rap at outlet																		
		1103	11	801-00 EBL Rt	Prop 2G with 20' of 15" drainage pipe with 2 elbows					20.0	2												
		1104	11	801-00 EBL Rt	Prop erosion class B rip rap at outlet																		
		1105	11	804-00 EBL Rt	Prop 2G with 20' of 15" drainage pipe with 2 elbows					20.0	2												
		1106	11	804-00 EBL Rt	Prop erosion class B rip rap at outlet																		
		1107	11	807-00 EBL Rt	Prop 2G with 20' of 15" drainage pipe with 2 elbows					20.0	2												
		1108	11	807-00 EBL Rt	Prop erosion class B rip rap at outlet																		
		1201	12	810-00 EBL Rt	Prop 2G with 20' of 15" drainage pipe with 2 elbows					20.0	2												
		1202	12	810-00 EBL Rt	Prop erosion class B rip rap at outlet																		
		1203	12	813-00 EBL Rt	Prop 2G with 20' of 15" drainage pipe with 2 elbows					20.0	2												
		1204	12	813-00 EBL Rt	Prop erosion class B rip rap at outlet																		
		1205	12	825-00 EBL Rt	Prop 2G with 20' of 15" drainage pipe with 2 elbows					20.0	2												
		1206	12	825-00 EBL Rt	Prop erosion class B rip rap at outlet																		
		1207	12	826-25 EBL Rt	Prop 2G with 30' of 15" drainage pipe with 2 elbows					30.0	2												
		1208	12	826-25 EBL Rt	Prop erosion class B rip rap at outlet																		
		1209	12	827-85 EBL Rt	Prop 2G with 30' of 15" drainage pipe with 2 elbows					30.0	2												
		1210	12	827-85 EBL Rt	Prop erosion class B rip rap at outlet																		
		1211	12	829-00 EBL Rt	Prop 2G with 20' of 15" drainage pipe with 2 elbows					20.0	2												
		1212	12	829-00 EBL Rt	Prop erosion class B rip rap at outlet																		
					SAV		9.7	12.7	40.0	220.0	20	96	12	12	8	1	9	3	274	274	5	5	
					TOTAL		10	13	40	220	20	96	12	12	8	1	9	3	274	274	5	5	

49963.3.1
Columbus

SUMMARY OF QUANTITIES - DRAINAGE

PROJECT NO.	COUNTY	DRAINAGE ITEM NO.	PLAN SHEET	ROUTE	Hydraulics Recommendation	Median ZGI structure depth	122000000.E	225200000.E	278600000.N	230800000.E	226420000.N	261900000.E	364900000.E	365600000.E	400000000.E	401200000.E	402900000.E	404200000.E	408400000.E	611100000.E	611700000.N	611750000.N	
							INCIDENTAL STONE BASE	PIPE COLLARS	MASONRY DRAINAGE STRUCTURES	MASONRY DRAINAGE STRUCTURES	FRAME WITH TWO GRATES, STD 840.20	4" CONCRETE PAVED DITCH	RIP RAP, CLASS B	GEOTEXTILE FOR DRAINAGE	TEMPORARY SILT FENCE	SEDIMENT CONTROL STONE	SAFETY FENCE	1/4" HARDWARE CLOTH	WATTLE	SEEDING & MULCHING	IMPERVIOUS DIKE	RESPONSE FOR EROSION CONTROL	CONCRETE WASHOUT STRUCTURE
							TON	CY	EA	LF	EA	SY	TON	SY	LF	TON	LF	LF	LF	ACR	LF	EA	EA
		1	4	464+65 WBL Lt	Remove and replace 18" concrete Flared End Section (FES) and 4' of 18" rcp with concrete collar	N/A		0.5							5		40	40	0.10				
		2	4	474+40 WBL Lt	Remove and replace 15' FES	N/A									5		40	40	0.10				
		3	4	479+50 WBL Lt	Remove and replace 18" FES and 4' of 18" rcp with concrete collar	N/A		0.5							5		40	40	0.10				
		4	5	499+60 WBL Rt	Line 70' of 18" rcp	N/A									5		40	40	0.10	15			
		5	5	505+60 WBL Lt	Remove and replace 18" FES and 1/4' of 18" rcp with concrete collar	N/A		0.5							5		40	40	0.10				
		6	5	505+60 WBL Rt	Remove and replace 18" FES and 1/4' of 18" rcp with concrete collar. Line 44' of 18" rcp	N/A		0.5							5		40	40	0.10	15			
		7	5	524+80 EBL Rt	Extend 4' of 24" rcp with concrete collar	N/A		0.6							5		40	40	0.10				
		8	7	600+60 WBL Lt	Remove and replace 18" FES	N/A									5		40	40	0.10				
		9	7	615+20 WBL Lt	Remove and replace 18" FES and 4' of 18" rcp with concrete collar	N/A		0.5							5		40	40	0.10				
		10	7	615+10 EBL Rt	Remove and replace 4' of 18" rcp with concrete collar	N/A		0.5							5		40	40	0.10				
		11	7	620+10 WBL Lt	Remove and replace 18" FES and 4' of 18" rcp with concrete collar	N/A		0.5							5		40	40	0.10				
		12	8	639+05 WBL Lt	Remove and replace 8' of 18" rcp with concrete collar	N/A		0.5							5		40	40	0.10				
		13	8	644+80 EBL Rt	Extend 4' of 24" rcp with concrete collar	N/A		0.6							5		40	40	0.10				
		14	8	657+50 EBL Rt	Extend 4x3' RCBC with JB and 8' of 48" RCP	8'			1	3.0					5		40	40	0.10				
		15	9	690+85 EBL Rt	Remove and replace 4' of 24" rcp extend with JB	6'			1	1.0					5		40	40	0.10				
		16	10	729+60 WBL Lt	Remove and replace 18" FES and 4' of 18" rcp with concrete collar	N/A		0.5							5		40	40	0.10				
		17	11	765+30 WBL Lt	Remove and replace 2@ 30" FES and 4' of 2@ 30" rcp's with concrete collars	N/A		1.4							5		40	40	0.10				
		18	11	777+68 WBL Lt	Line 64' of 18" rcp	N/A									5		40	40	0.10	15			
		19	11	786+65 WBL Lt	Remove and replace 30" FES and 4' of 30" rcp with concrete collar	N/A		0.7							5		40	40	0.10				
		20	11	798+50 WBL Lt to 799+65 WBL Lt	Remove and replace 115' of 6" conc ditch	N/A					77				5		40	40	0.10				
		21	11	799+65 WBL Lt	Remove and replace 18" FES and 8' of 18" rcp with concrete collar. Line 54' of 18" rcp	N/A		0.5							5		40	40	0.10	15			
		22	12	818+40 WBL Lt	Remove and replace 24' of 18" rcp with concrete collar. Line 40' of 18" rcp	N/A		0.5							5		40	40	0.10	15			
		1101	11	798+00 EBL Rt	Prop ZGI with 20' of 15" drainage pipe with 2 elbows				1		1				5		40	40	0.10				
		1102	11	798+00 EBL Rt	Prop erosion class B rip rap at outlet							2	7		5		40	40	0.10				
		1103	11	801+00 EBL Rt	Prop ZGI with 20' of 15" drainage pipe with 2 elbows				1		1				5		40	40	0.10				
		1104	11	801+00 EBL Rt	Prop erosion class B rip rap at outlet							2	7		5		40	40	0.10				
		1105	11	804+00 EBL Rt	Prop ZGI with 20' of 15" drainage pipe with 2 elbows				1		1				5		40	40	0.10				
		1106	11	804+00 EBL Rt	Prop erosion class B rip rap at outlet							2	7		5		40	40	0.10				
		1107	11	807+00 EBL Rt	Prop ZGI with 20' of 15" drainage pipe with 2 elbows				1		1				5		40	40	0.10				
		1108	11	807+00 EBL Rt	Prop erosion class B rip rap at outlet							2	7		5		40	40	0.10				
		1201	12	810+00 EBL Rt	Prop ZGI with 20' of 15" drainage pipe with 2 elbows				1		1				5		40	40	0.10				
		1202	12	810+00 EBL Rt	Prop erosion class B rip rap at outlet							2	7		5		40	40	0.10				
		1203	12	813+00 EBL Rt	Prop ZGI with 20' of 15" drainage pipe with 2 elbows				1		1				5		40	40	0.10				
		1204	12	813+00 EBL Rt	Prop erosion class B rip rap at outlet							2	7		5		40	40	0.10				
		1205	12	825+00 EBL Rt	Prop ZGI with 20' of 15" drainage pipe with 2 elbows				1		1				5		40	40	0.10				
		1206	12	825+00 EBL Rt	Prop erosion class B rip rap at outlet							2	7		5		40	40	0.10				
		1207	12	826+25 EBL Rt	Prop ZGI with 30' of 15" drainage pipe with 2 elbows				1		1				5		40	40	0.10				
		1208	12	826+25 EBL Rt	Prop erosion class B rip rap at outlet							2	7		5		40	40	0.10				
		1209	12	827+85 EBL Rt	Prop ZGI with 30' of 15" drainage pipe with 2 elbows				1		1				5		40	40	0.10				
		1210	12	827+85 EBL Rt	Prop erosion class B rip rap at outlet							2	7		5		40	40	0.10				
		1211	12	829+00 EBL Rt	Prop ZGI with 20' of 15" drainage pipe with 2 elbows				1		1				5		40	40	0.10				
		1212	12	829+00 EBL Rt	Prop erosion class B rip rap at outlet							2	7		5		40	40	0.10				
						SAV	200	8.8	12	4.0	10	77	20	70	400	210	300	1,680	1,680	4.20	75	7	7
						TOTAL	200	8.8	12	4.0	10	77	20	70	400	210	300	1,680	1,680	4.20	75	7	7

49906.3.1
Oahu

SIGNING QUANTITIES

PROJECT NO	COUNTY	MAP NO	ROUTE	DESCRIPTION	TYP NO	LANES	LANE TYPE	LENGTH	4072000000-E	4078000000-E	4096000000-N	4102000000-N	4108000000-N	4114000000-N	4155000000-N	4238500000-N	
									SUPPORTS, 3 LB STEEL U-CHANNEL	SUPPORTS, 2-LB STEEL U-CHANNEL	SIGN ERECTION TYPE D	SIGN ERECTION TYPE E	SIGN ERECTION TYPE F	SIGN ERECTION, MILEMARKERS	DISPOSAL OF SIGN SYSTEM, U-CHANNEL	DISPOSAL OF SIGN, MILEMARKER	
									MI	LF	EA	EA	EA	EA	EA	EA	
49986.3.1	Columbus	1	US 74 WB	FROM WEST OF NC 214 TO WEST OF WATER TANK ROAD	1	2	2WD	7.29									
		2	US 74 EB	FROM WEST OF NC 214 TO WEST OF WATER TANK ROAD	1	2	2WD	7.31									
GRAND TOTAL																	
									1,670	16	3	57	6	16	65	16	

WORK ZONE TRAFFIC CONTROL QUANTITIES

PROJECT NO	COUNTY	MAP NO	ROUTE	DESCRIPTION	TYP NO	LANES	LANE TYPE	LENGTH	4400000000-E	4423000000-N	4424000000-N	4434000000-N	4430000000-N	4600000000-N
									WORK ZONE SIGNS (STATIONARY)	WORK ZONE DIGITAL SPEED LIMIT SIGNS	WORK ZONE PRESENCE LIGHTING	SEQUENTIAL FLASHING WARNING LIGHTS	DRUMS	GENERIC TRAFFIC CONTROL ITEM - SINGLE LANE CLOSURE
									MI	SF	EA	EA	EA	EA
49986.3.1	Columbus	1	US 74 WB	FROM WEST OF NC 214 TO WEST OF WATER TANK ROAD	1	2	2WD	7.29						
		2	US 74 EB	FROM WEST OF NC 214 TO WEST OF WATER TANK ROAD	1	2	2WD	7.31						
GRAND TOTAL														
									990	4	14	13	200	9

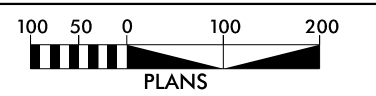
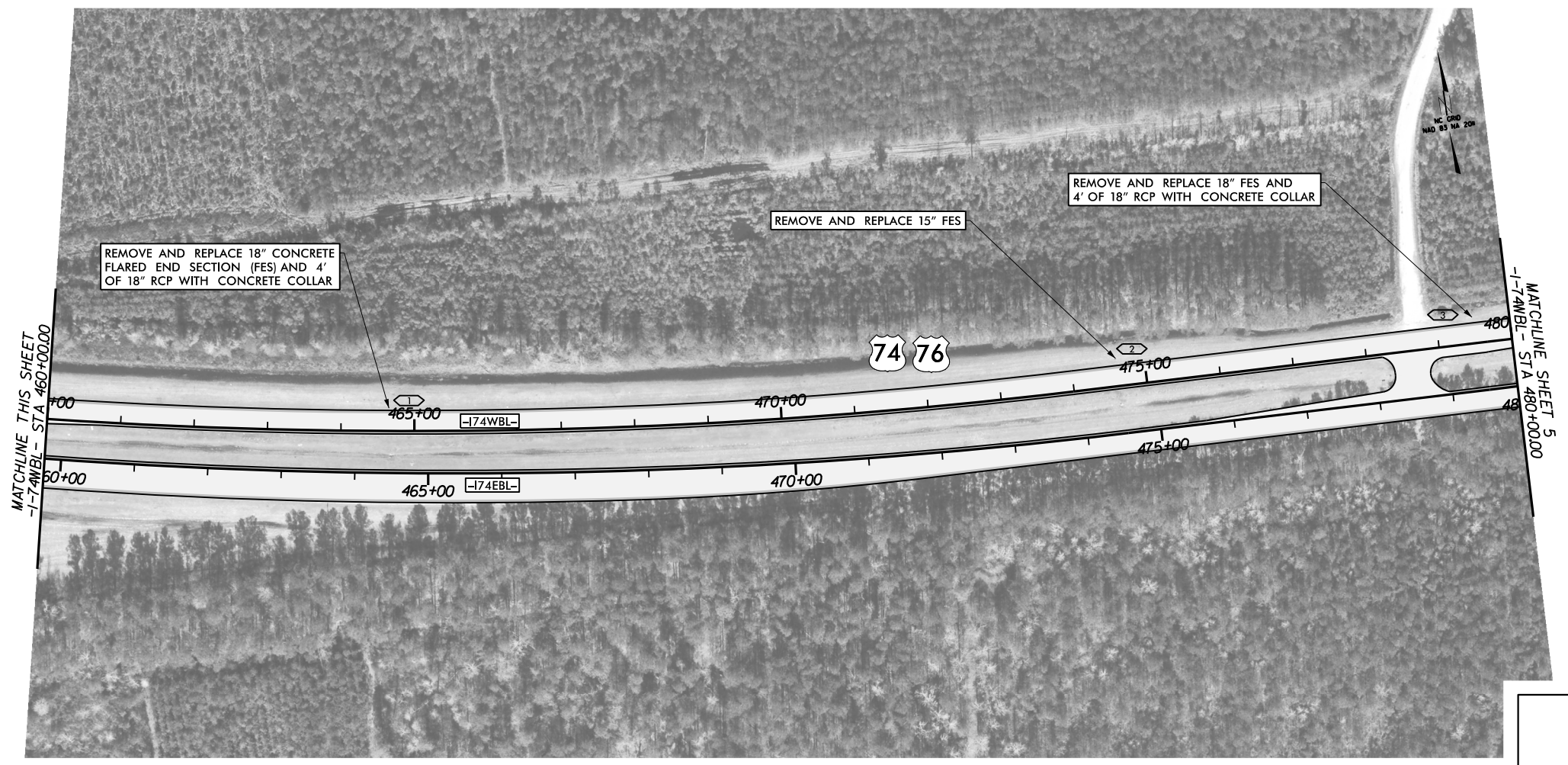
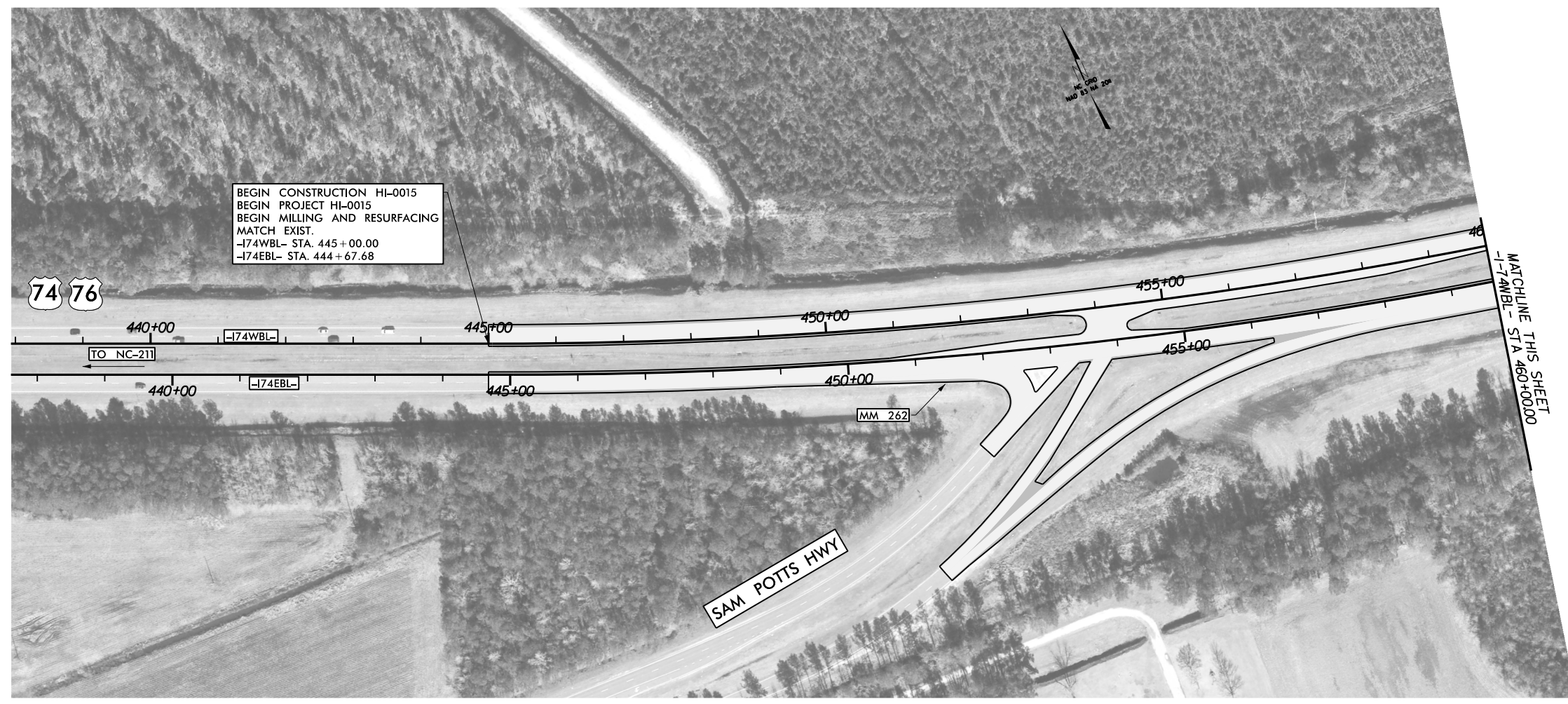
THERMOPLASTIC AND PAINT QUANTITIES

PROJECT NO	COUNTY	MAP NO	ROUTE	DESCRIPTION	TYP NO	LANES	LANE TYPE	LENGTH	WIDTH	4688000000-E		4700000000-E		4725000000-E						4795000000-E	4815000000-E		
										THERMO PAVEMENT MARKING LINES (6", 90 MILS), WHITE	THERMO PAVEMENT MARKING LINES (6", 90 MILS), YELLOW	THERMO PAVEMENT MARKING LINES (12", 90 MILS), WHITE	THERMO PAVEMENT MARKING SYMBOL (90 MILS), MERGE ARROW	THERMO PAVEMENT MARKING SYMBOL (90 MILS), LEFT ARROW	THERMO PAVEMENT MARKING SYMBOL (90 MILS), THRU ARROW	THERMO PAVEMENT MARKING SYMBOL (90 MILS), RIGHT ARROW	THERMO PAVEMENT MARKING SYMBOL (90 MILS), U-TURN ARROW	THERMO PAVEMENT MARKING SYMBOL (90 MILS), LEFT/THRU ARROW	THERMO PAVEMENT MARKING SYMBOL (90 MILS), RIGHT/THRU ARROW	COLD APPLIED PLASTIC PAVEMENT MARKING LINES, TYPE 2 (24")	PAINT PAVEMENT MARKING LINES (6"), WHITE	PAINT PAVEMENT MARKING LINES (6"), YELLOW	
										LF	LF	LF	EA	EA	EA	EA	EA	EA	EA		LF	LF	
49986.3.1	Columbus	1	US 74 WB	FROM WEST OF NC 214 TO WEST OF WATER TANK ROAD	1	2	2WD	7.29	24														
		2	US 74 EB	FROM WEST OF NC 214 TO WEST OF WATER TANK ROAD	1	2	2WD	7.31	24														
GRAND TOTAL										101,780	79,900		3	35	97	2	12	2	4		102,200	80,230	
										181,680		8,450		155						30	182,430		

PROJECT NO	COUNTY	MAP NO	ROUTE	DESCRIPTION	TYP NO	LANES	LANE TYPE	LENGTH	WIDTH	4825000000-E		4835000000-E		4845000000-N						4846000000-E		4905100000-N	
										PAINT PAVEMENT MARKING LINES (12"), WHITE	PAINT PAVEMENT MARKING LINES (24"), WHITE	PAINT PAVEMENT MARKING SYMBOL, MERGE ARROW	PAINT PAVEMENT MARKING SYMBOL, LEFT ARROW	PAINT PAVEMENT MARKING SYMBOL, THRU ARROW	PAINT PAVEMENT MARKING SYMBOL, RIGHT ARROW	PAINT PAVEMENT MARKING SYMBOL, U-TURN ARROW	PAINT PAVEMENT MARKING SYMBOL, LEFT/THRU ARROW	PAINT PAVEMENT MARKING SYMBOL, RIGHT/THRU ARROW	POLYUREA PAVEMENT MARKING LINES (6", 30 MILS), WHITE	POLYUREA PAVEMENT MARKING LINES (6", 30 MILS), YELLOW	NON-CAST IRON SNOWPLOWABLE PAVEMENT MARKER		
										LF	LF	EA	EA	EA	EA	EA	EA	EA	EA	EA	EA	EA	EA
49986.3.1	Columbus	1	US 74 WB	FROM WEST OF NC 214 TO WEST OF WATER TANK ROAD	1	2	2WD	7.29	24														
		2	US 74 EB	FROM WEST OF NC 214 TO WEST OF WATER TANK ROAD	1	2	2WD	7.31	24														
GRAND TOTAL										8,450	30	3	35	97	2	12	2	4	420	330			
										8,450		30		155						750		1,683	



Whitman, Reardon & Associates, LLP
 1201 Edwards Mill Road, Suite 320, Raleigh, North Carolina 27606



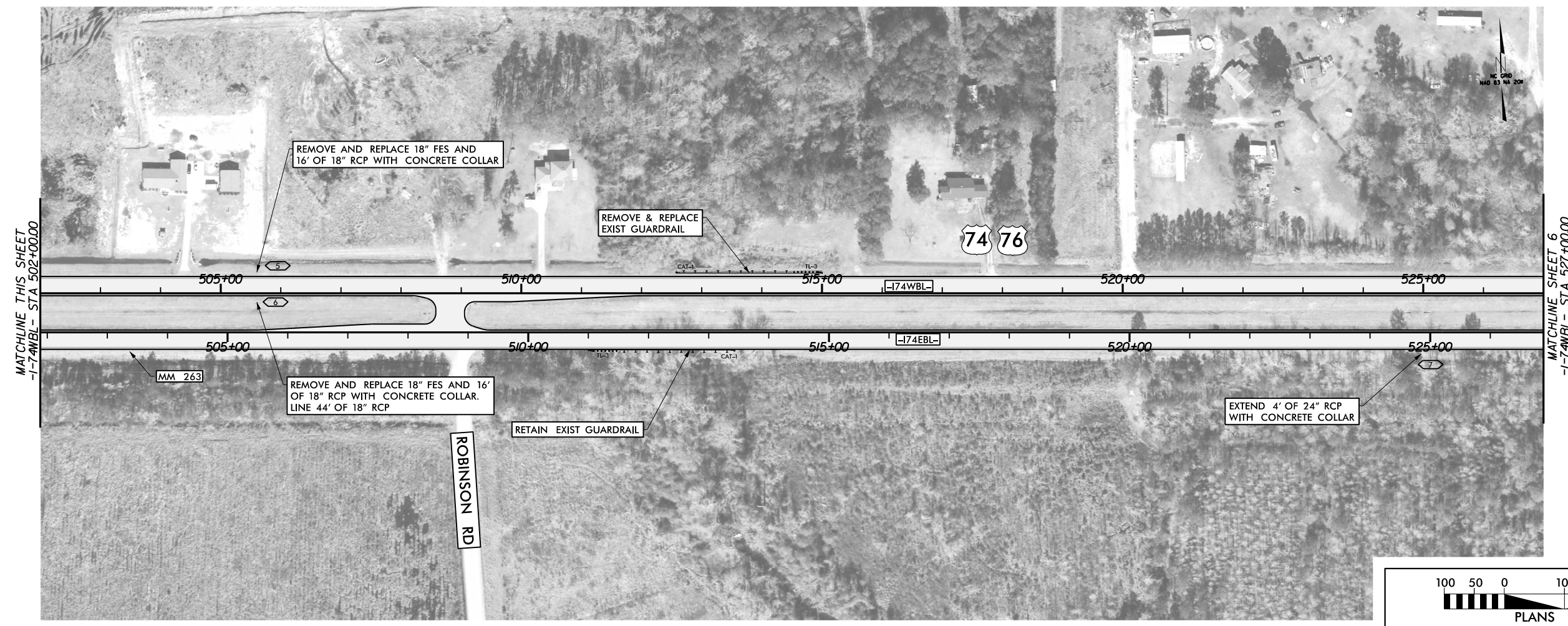
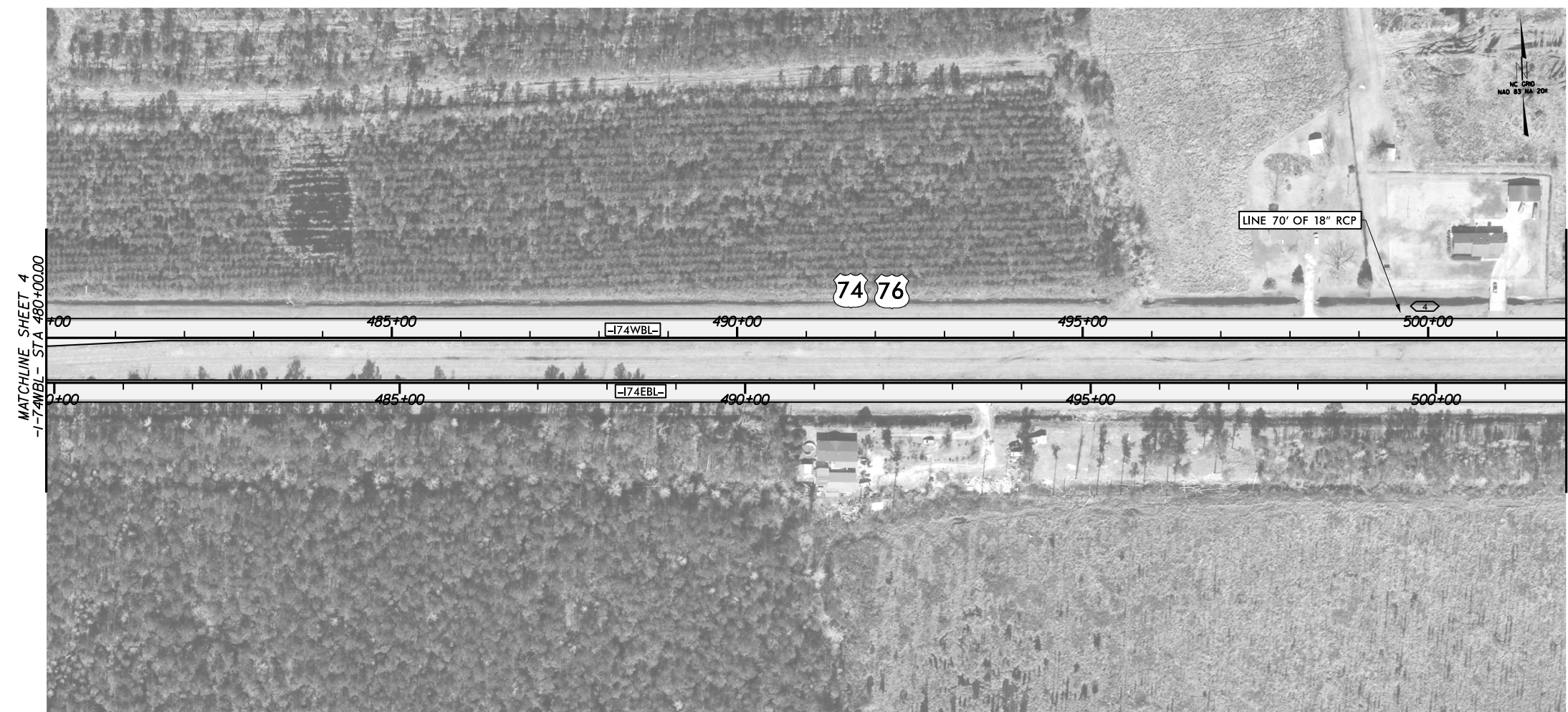
8/17/99

9:51:12 AM
 N:\43006-002\CADD\NCDOT\Roadway\Proj\HI-0015\HI-0015_RDY_PSH-04.dgn



Whitman, Requardt & Associates, LLP
 1201 Edwards Mill Road, Suite 320, Raleigh, North Carolina 27606

8/17/99



1:37:57 PM
 N:\43006-002\CADD\NCDDT\Roadway\Proj\HI-0015\HI-0015_RDY_PSH-05.dgn

