



STATE OF NORTH CAROLINA  
DEPARTMENT OF TRANSPORTATION

ROY COOPER  
GOVERNOR

J.R. "JOEY" HOPKINS  
SECRETARY

February 15, 2024

**Addendum No. 1**

RE: Contract # C204918  
WBS # 2024CPT.05.10.10321.1, 2024CPT.05.10.10921.1  
STATE FUNDED  
**Durham and Wake Counties**  
3 SECTIONS OF NC-55

**February 20, 2024 Letting**

To Whom It May Concern:

Reference is made to the sketch maps furnished to you on this project.

The following revisions have been made to the sketch maps.

| Sheet No. | Revision   |
|-----------|--|
| 1-8       | Vicinity Map descriptions updated to match Summary of Quantities Map descriptions. |

Please void the above listed Sheets in your Sketch Maps and staple the revised Sheets thereto.

The contract will be prepared accordingly.

Sincerely,

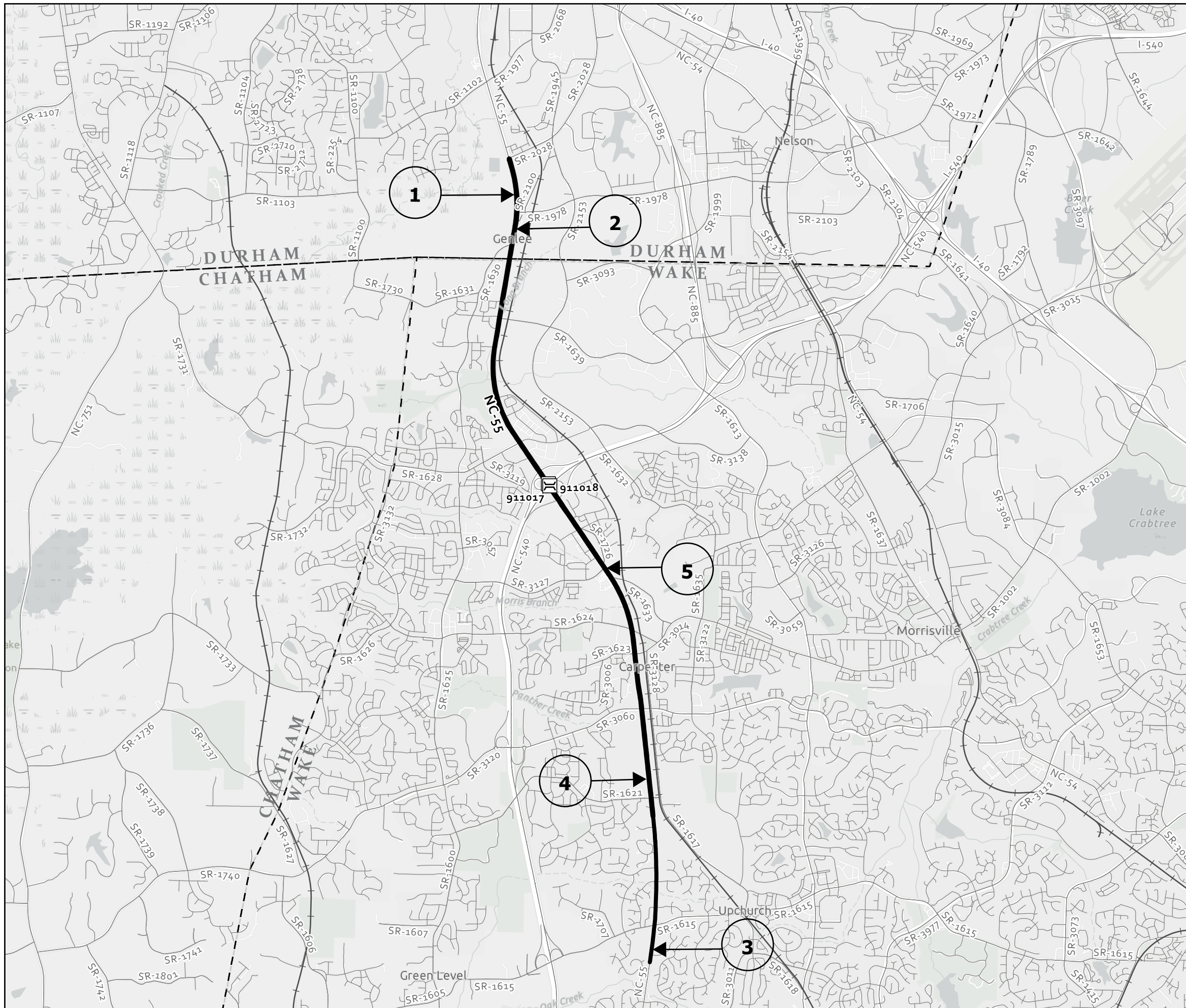
DocuSigned by:  
  
 52C46046381F443...

Ronald E. Davenport, Jr., PE  
State Contract Officer

RED/cms  
Attachments

cc: Mr. Boyd Tharrington, PE  
Mr. Brandon H. Jones, PE  
Mr. Ken Kennedy, PE  
Mr. Malcolm Bell

Mr. Forrest Dungan, PE  
Ms. Jaci Kincaid  
Mr. Jon Weathersbee, PE  
Project File (2)



| Wake 55                    |           |
|----------------------------|-----------|
| PROJECT REFERENCE NO.      | SHEET NO. |
| 2024CPT.05.10.10321.1, ETC | <b>1</b>  |

Map 1 NC-55 (SB)  
From SR 2028 (T.W. Alexander Dr.) to Wake Co. Line

Map 2 NC-55 (NB)  
From Durham Co. Line to SR 2028 (T.W. Alexander Dr.)

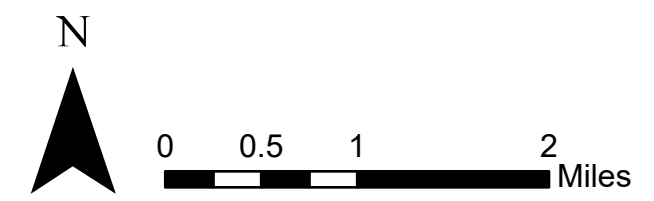
Map 3 NC-55  
From Pavement Joint to Begin Divided (Full Width)

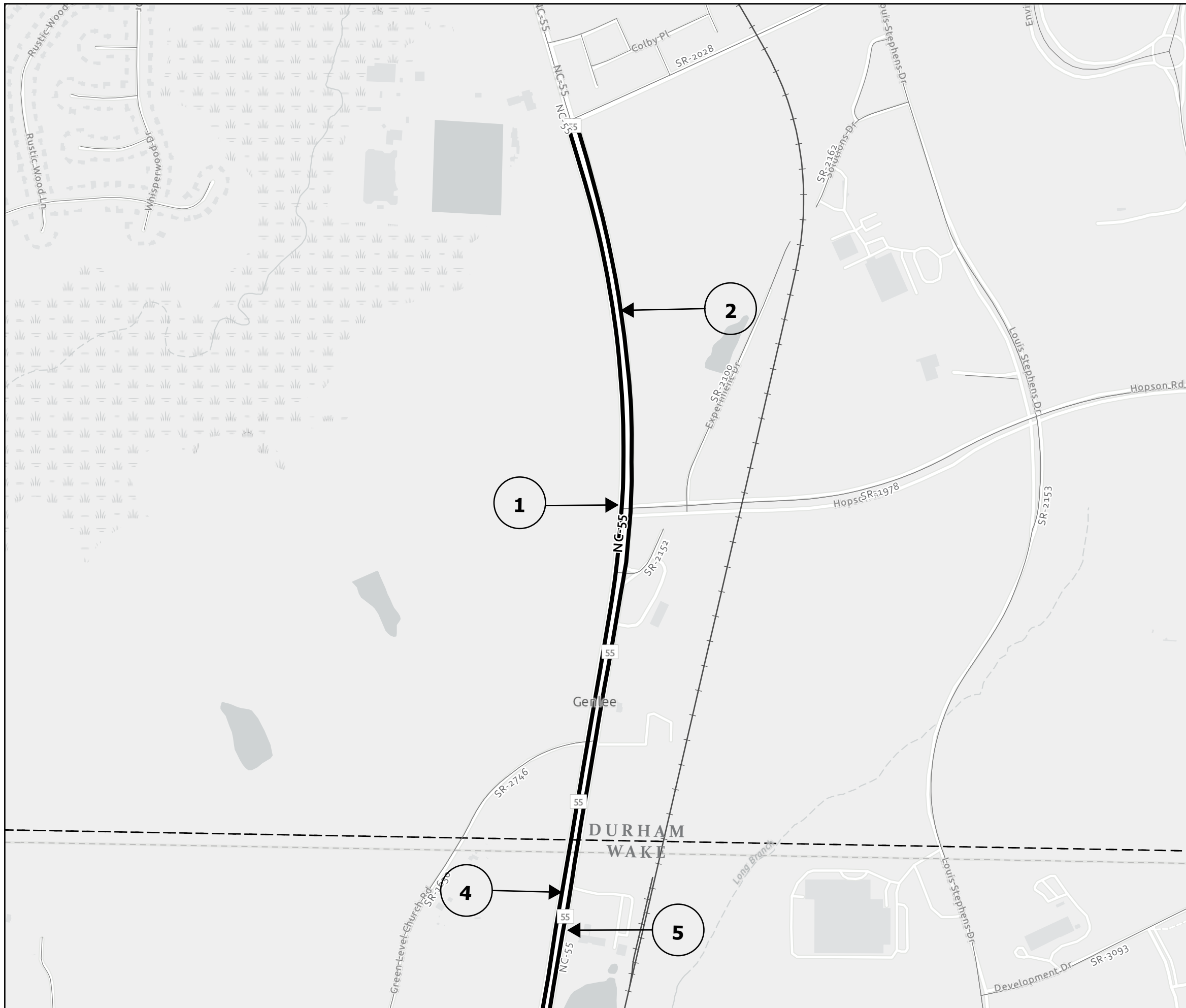
Map 4 NC-55 (SB)  
From Durham County Line to End Divided

Map 5 NC-55 (NB)  
From Begin Divided to Durham Co. Line

Bridge 1: 911017  
Mile-Post: 26.52

Bridge 2: 911018  
Mile-Post: 26.50





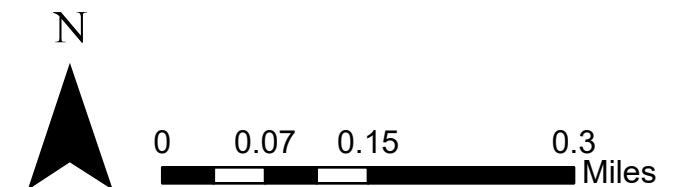
| Wake 55                   |           |
|---------------------------|-----------|
| PROJECT REFERENCE NO.     | SHEET NO. |
| 2024CPT.05.10.10321.1,ETC | 2         |

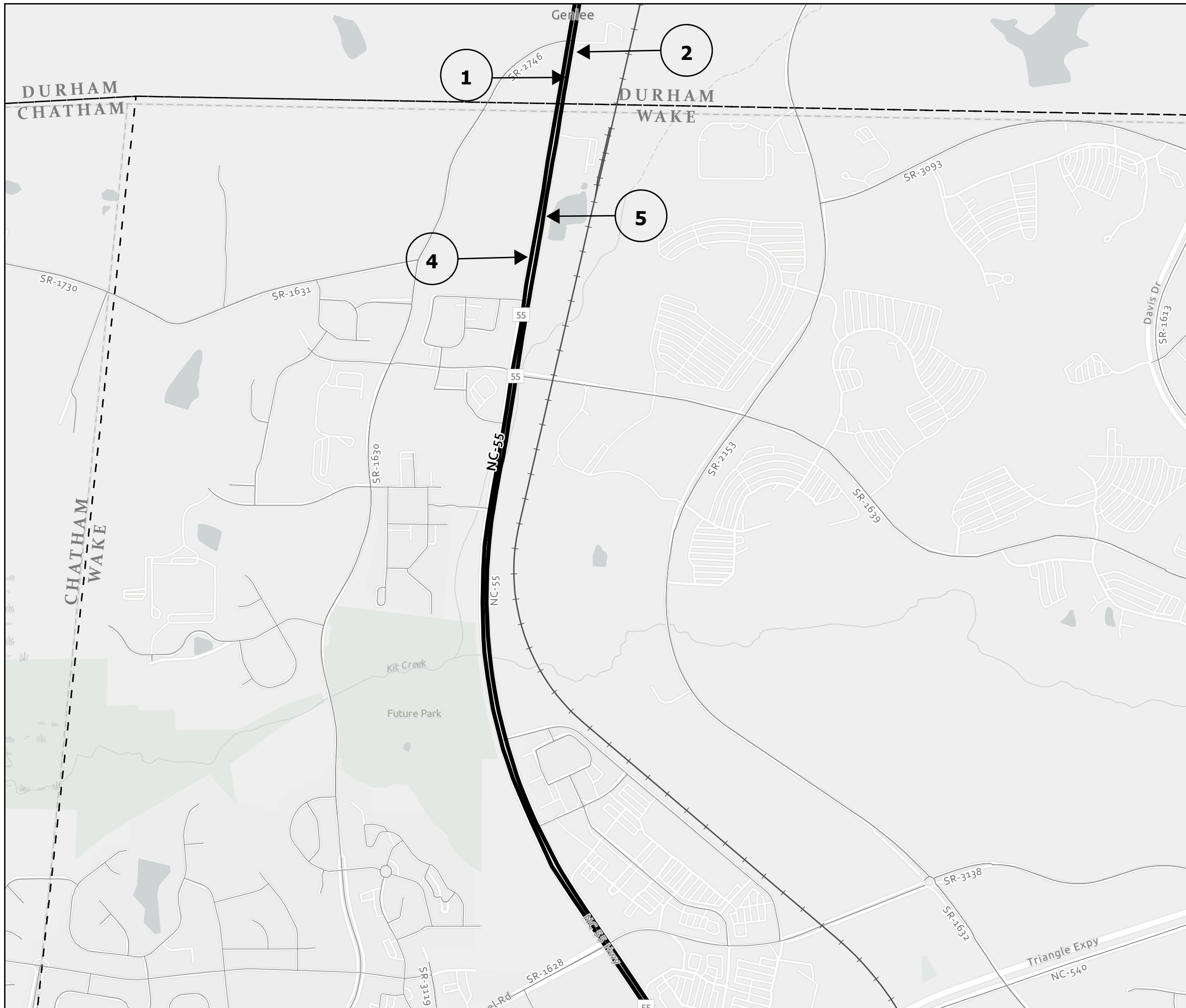
Map 1 NC-55 (SB)  
From SR 2028 (T.W. Alexander Dr.) to  
Wake Co. Line

Map 2 NC-55 (NB)  
From Durham Co. Line to SR 2028 (T.W.  
Alexander Dr.)

Map 4 NC-55 (SB)  
From Durham County Line to End Divided

Map 5 NC-55 (NB)  
From Begin Divided to Durham Co. Line





| Wake 55                   |           |
|---------------------------|-----------|
| PROJECT REFERENCE NO.     | SHEET NO. |
| 2024CPT.05.10.10321.1,ETC | 3         |

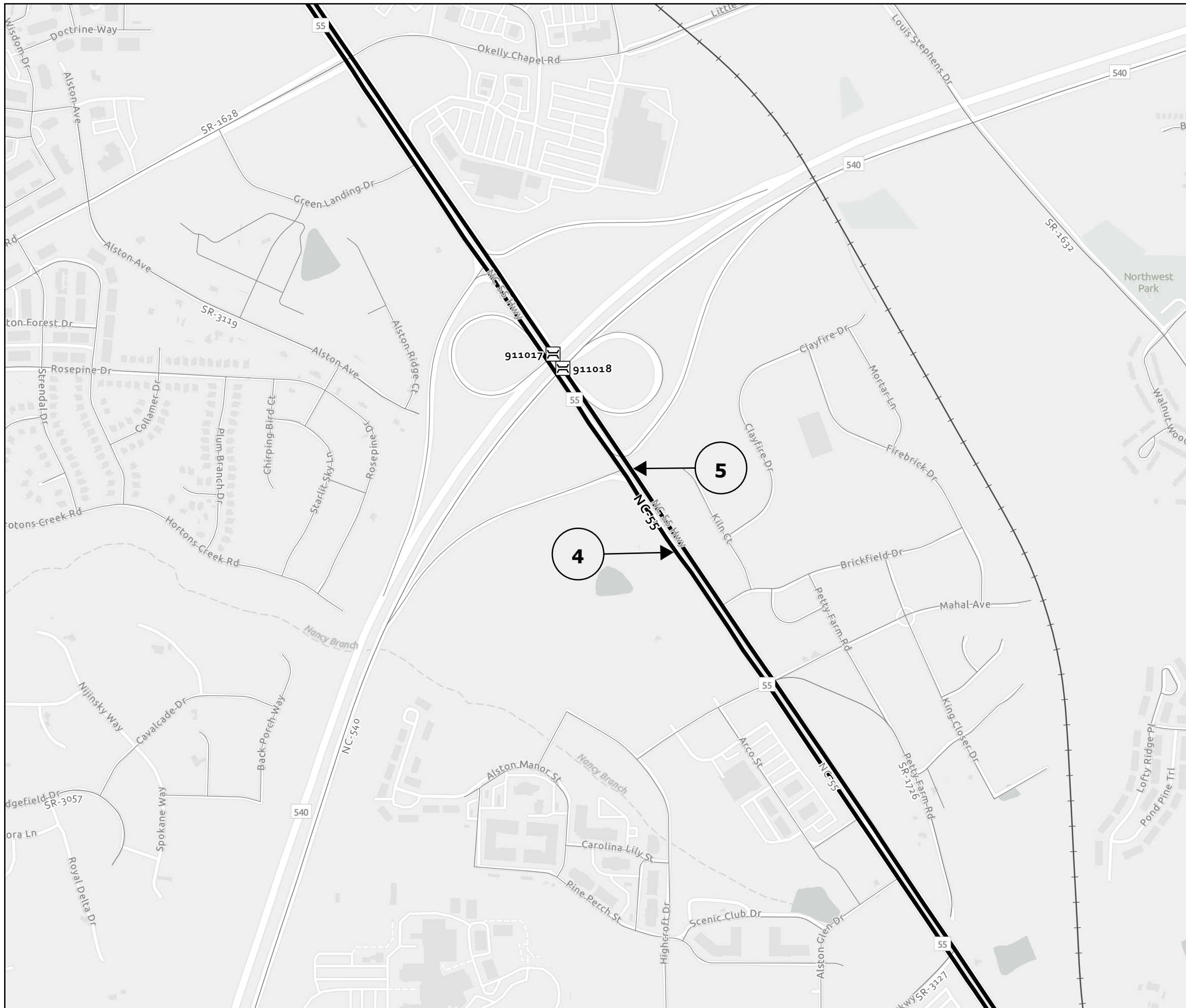
Map 1 NC-55 (SB)  
From SR 2028 (T.W. Alexander Dr.)  
to Wake Co. Line

Map 2 NC-55 (NB)  
From Durham Co. Line to SR 2028  
(T.W. Alexander Dr.)

Map 4 NC-55 (SB)  
From Durham County Line to End Divided

Map 5 NC-55 (NB)  
From Begin Divided to Durham Co. Line





| Wake 55                   |           |
|---------------------------|-----------|
| PROJECT REFERENCE NO.     | SHEET NO. |
| 2024CPT.05.10.10321.1,ETC | 4         |

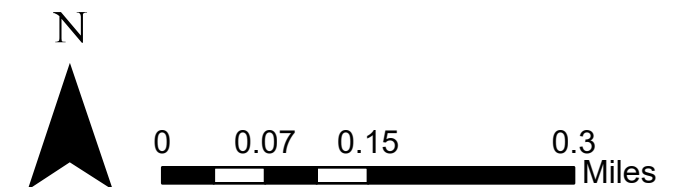
Wake County

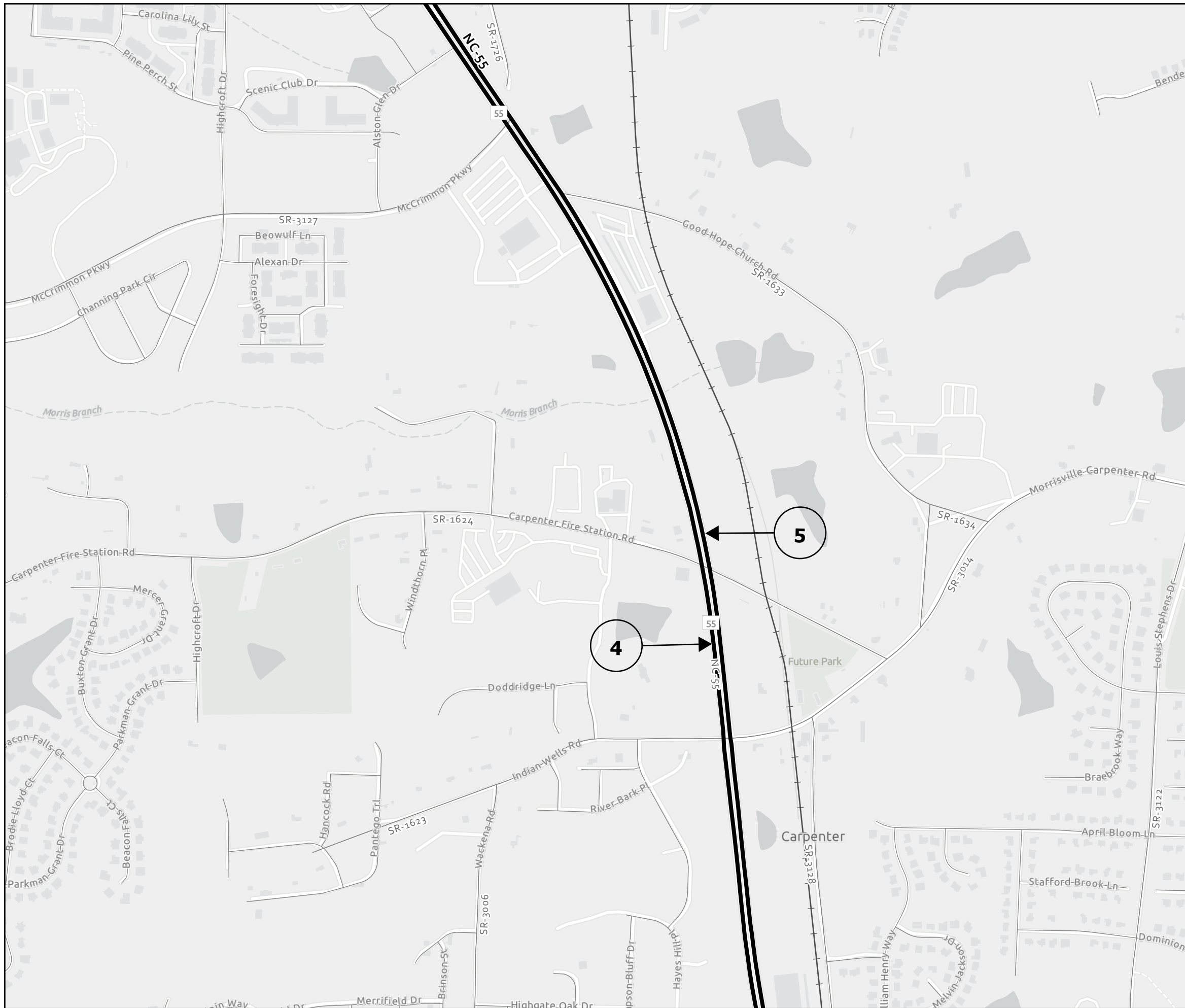
Map 4 NC-55 (SB)  
From Durham County Line to End Divided

Map 5 NC-55 (NB)  
From Begin Divided to Durham Co. Line

Bridge 1: 911017  
Mile-Post: 26.52

Bridge 2: 911018  
Mile-Post: 26.50



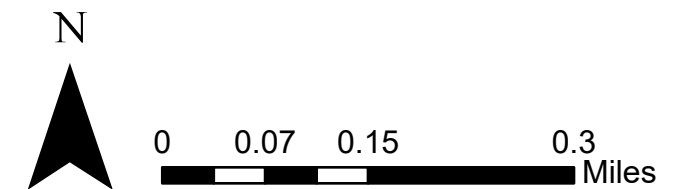


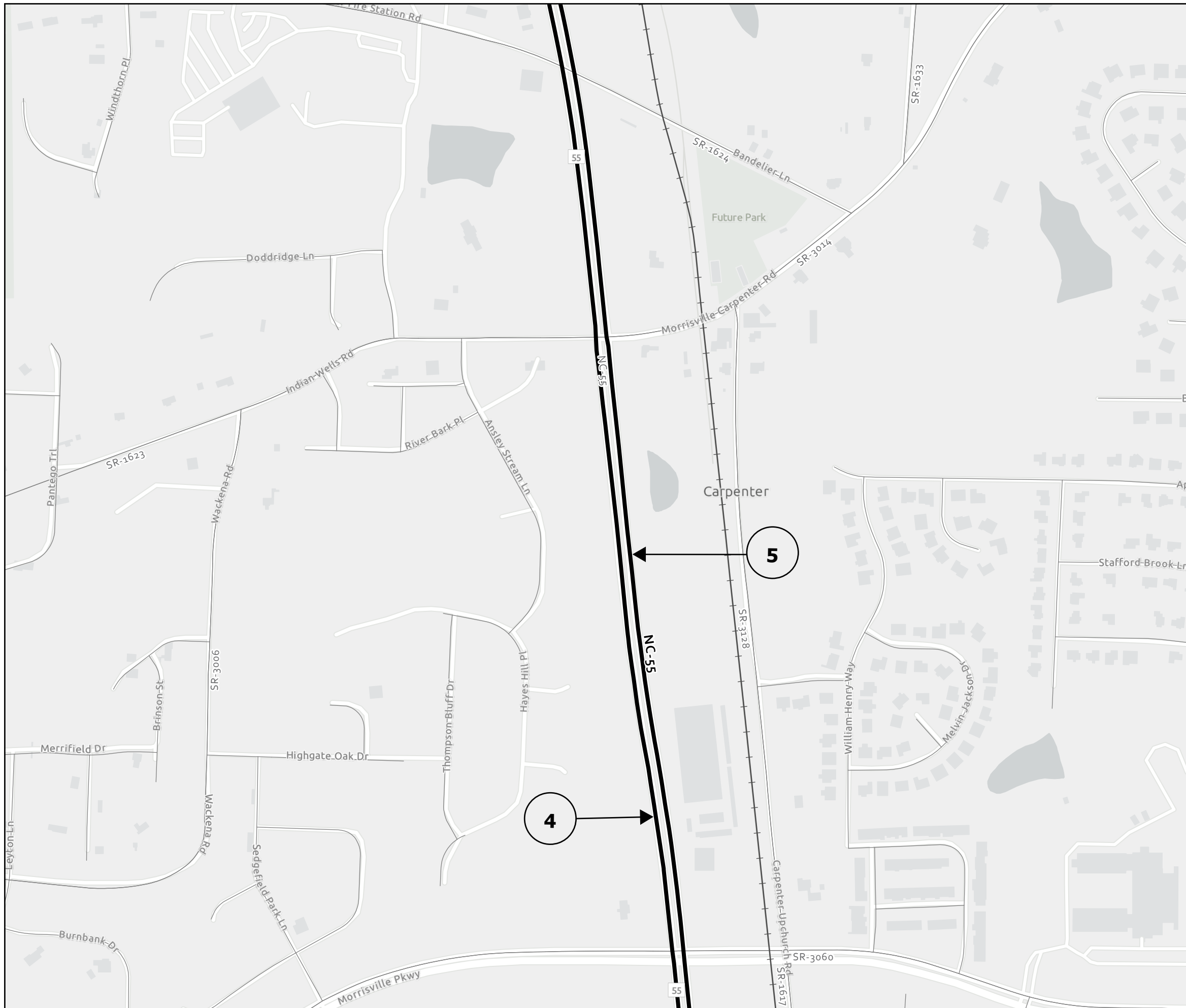
| Wake 55                   |           |
|---------------------------|-----------|
| PROJECT REFERENCE NO.     | SHEET NO. |
| 2024CPT.05.10.10321.1,ETC | 5         |

Wake County

Map 4 NC-55 (SB)  
From Durham County Line to End Divided

Map 5 NC-55 (NB)  
From Begin Divided to Durham Co. Line



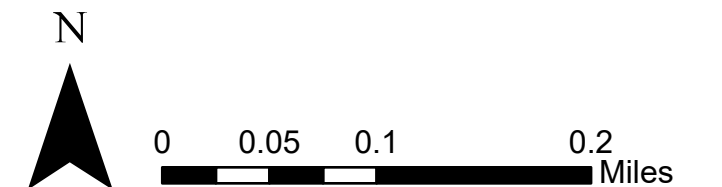


| Wake 55                   |           |
|---------------------------|-----------|
| PROJECT REFERENCE NO.     | SHEET NO. |
| 2024CPT.05.10.10321.1,ETC | 6         |

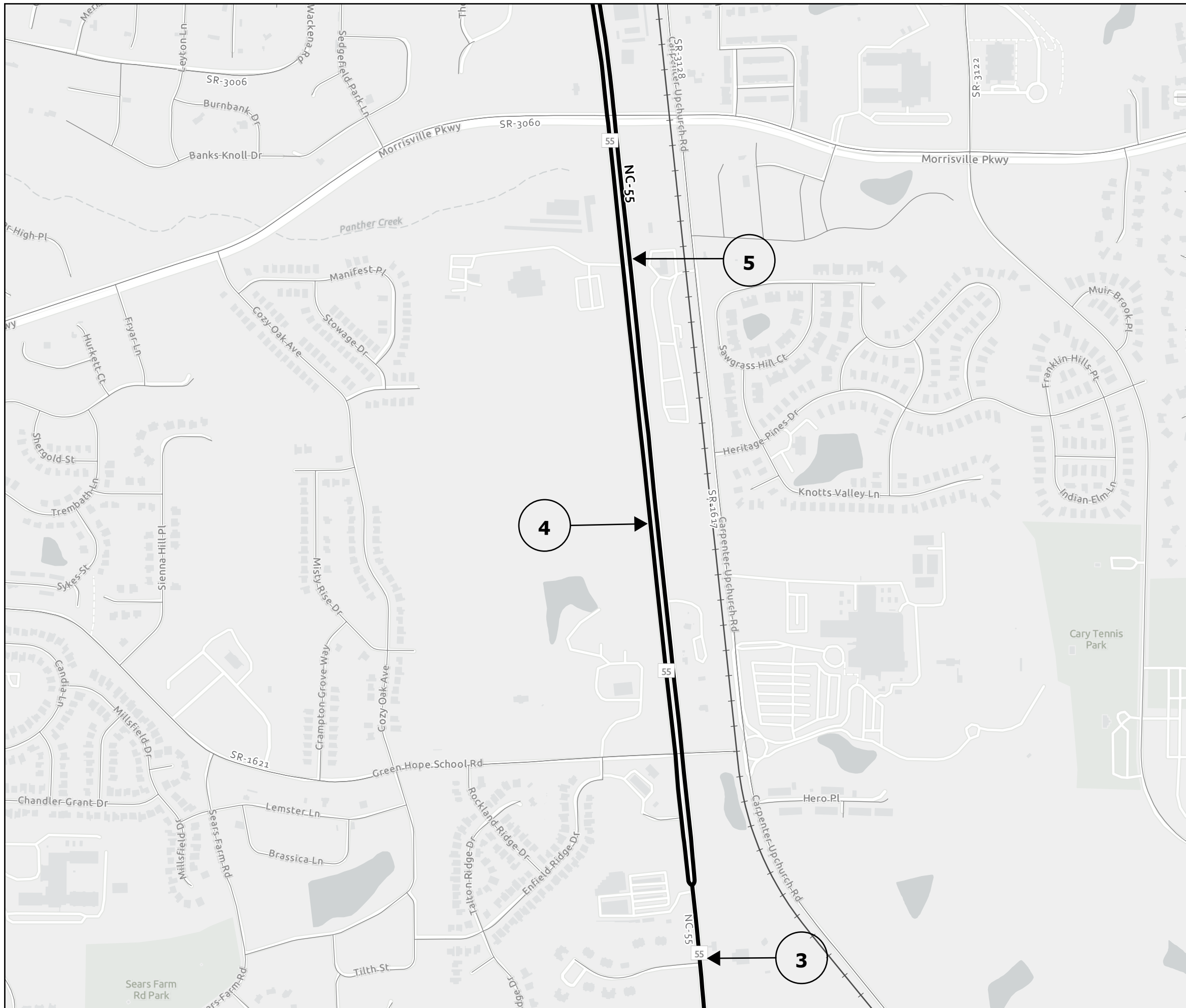
Wake County

Map 4 NC-55 (SB)  
From Durham County Line to End Divided

Map 5 NC-55 (NB)  
From Begin Divided to Durham Co. Line







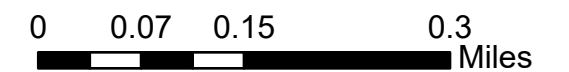
| Wake 55                   |           |
|---------------------------|-----------|
| PROJECT REFERENCE NO.     | SHEET NO. |
| 2024CPT.05.10.10321.1,ETC | 7         |

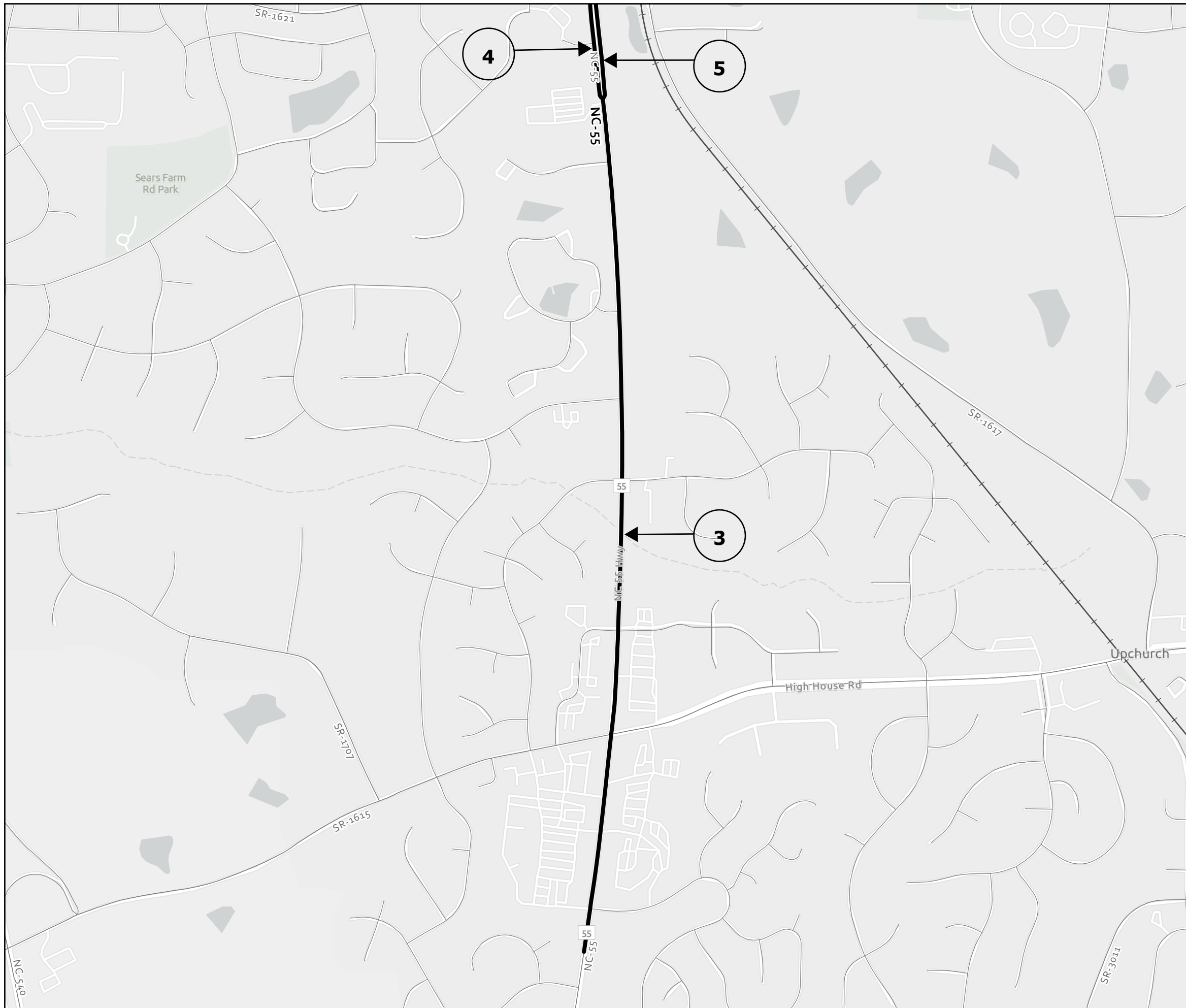
Wake County

Map 3 NC-55  
From Pavement Joint to Begin Divided  
(Full Width)

Map 4 NC-55 (SB)  
From Durham County Line to End Divided

Map 5 NC-55 (NB)  
From Begin Divided to Durham Co. Line





| Wake 55                    |           |
|----------------------------|-----------|
| PROJECT REFERENCE NO.      | SHEET NO. |
| 2024CPT.05.10.10321.1, ETC | 8         |

Wake County

Map 3 NC-55  
From Pavement Joint to Begin Divided  
(Full Width)

Map 4 NC-55 (SB)  
From Durham County Line to End Divided

Map 5 NC-55 (NB)  
From Begin Divided to Durham Co. Line

