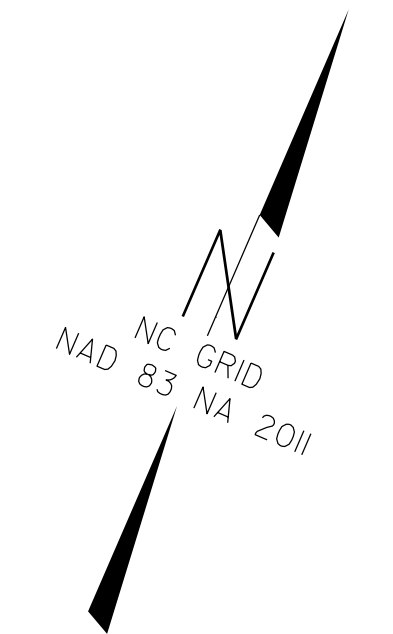


SURVEY CONTROL SHEET

W/ EXISTING CENTERLINE ALIGNMENTS PRIOR TO CONSTRUCTION



PROJECT REFERENCE NO.	SHEET NO.
B-6046	rw2c-1
Location and Surveys	
<small>Dewberry Engineers Inc. 8000 Heath Center Pkwy - Suite 200 Charlotte, NC 28218 Phone: 704.268.2818 Fax: 704.268.2815 www.dewberry.com NCELS # 410600</small>	
PROJECT SURVEYOR	
DOCUMENT NOT CONSIDERED FINAL UNLESS ALL SIGNATURES COMPLETED	

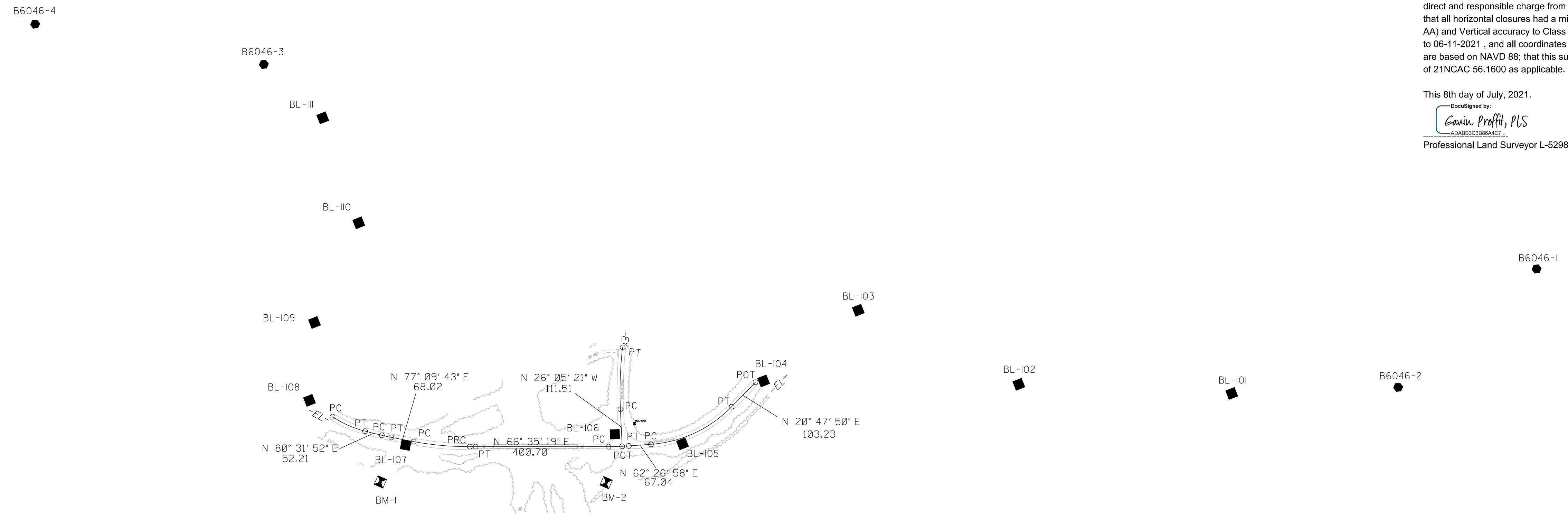
I, Gavin D. Proffit, PLS, certify that the Project Control was verified under my supervision from an actual survey made under my supervision and the following information was used to perform the survey:

Localized around: B-6046-1
Northing: 540471.6154
Easting: 1626587.5331
Combined grid factor: 0.999853245
Geoid model: GEOID12B
Units: US Survey Feet

I also certify that the Baseline Control for this project was completed under my direct and responsible charge from an actual survey made under my supervision; that all horizontal closures had a minimum ratio of precision of 1:20,000 (Class AA) and Vertical accuracy to Class A. Field work was performed from 04-15-2021 to 06-11-2021, and all coordinates are based on NAD 83/2011 and all elevations are based on NAVD 88; that this survey was performed to meet the requirements of 21NCAC 56.1600 as applicable.

This 8th day of July, 2021.

Professional Land Surveyor L-5298



SEE SHEET RW2C-3
FOR FURTHER
ALIGNMENT DETAILS

NOTES:

1. PROJECT CONTROL WAS ESTABLISHED USING GNSS, THE GLOBAL NAVIGATION SATELLITE SYSTEM.
2. THE SURVEY CONTROL DATA FOR THIS PROJECT HAS BEEN COMPILED FROM VARIOUS SOURCES. IF FURTHER INFORMATION REGARDING PROJECT CONTROL IS NEEDED, PLEASE CONTACT THE LOCATION AND SURVEYS UNIT.