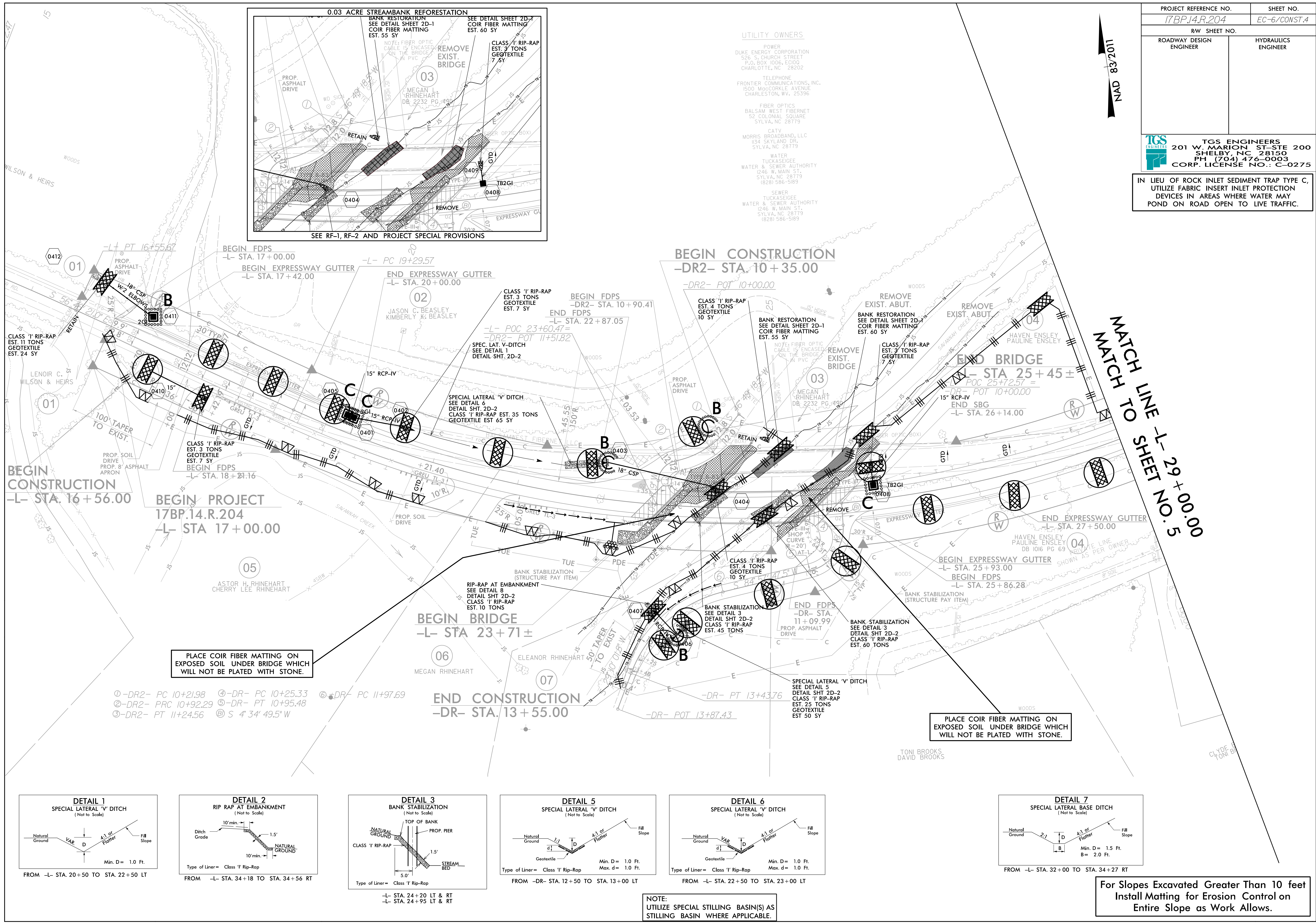


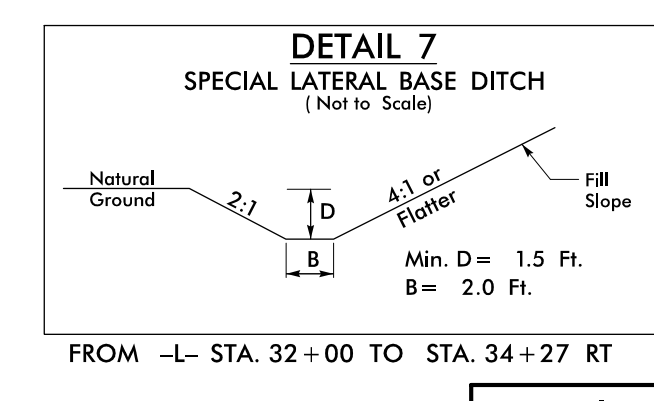
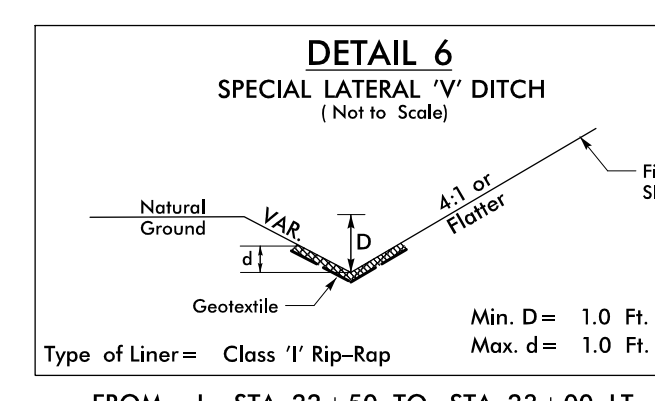
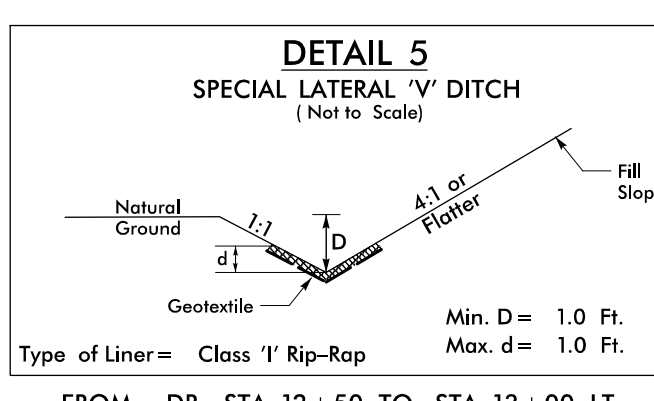
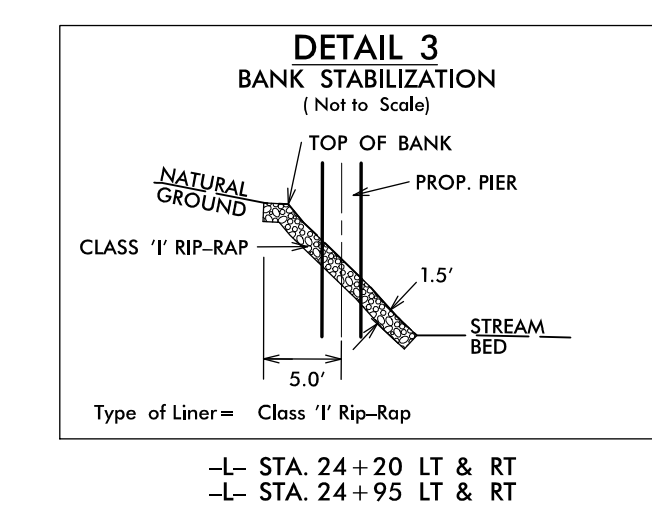
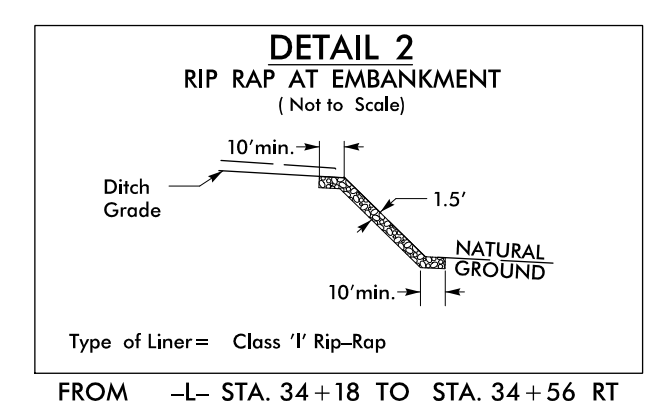
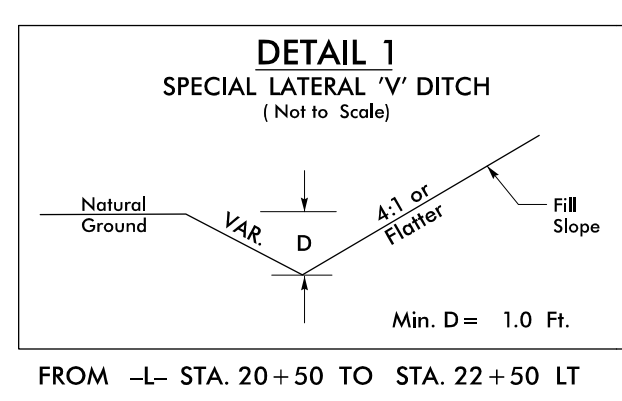
PROJECT REFERENCE NO. 17BP.14.R.204	SHEET NO. EC-6/CONST.4
RW SHEET NO.	
ROADWAY DESIGN ENGINEER	HYDRAULICS ENGINEER

TGS ENGINEERS
 201 W. MARION ST. STE 200
 SHELBY, NC 28150
 PH (704) 476-0003
 CORP. LICENSE NO.: C-0275

IN LIEU OF ROCK INLET SEDIMENT TRAP TYPE C, UTILIZE FABRIC INSERT PROTECTION DEVICES IN AREAS WHERE WATER MAY POND ON ROAD OPEN TO LIVE TRAFFIC.



- ①-DR2- PC 10+21.98
- ②-DR2- PRC 10+92.29
- ③-DR2- PT 11+24.56
- ④-DR- PC 10+25.33
- ⑤-DR- PT 10+95.48
- ⑥-DR- PC 11+97.69
- ⑦-S 4° 34' 49.5" W



NOTE:
UTILIZE SPECIAL STILLING BASIN(S) AS STILLING BASIN WHERE APPLICABLE.

For Slopes Excavated Greater Than 10 feet
Install Matting for Erosion Control on
Entire Slope as Work Allows.