
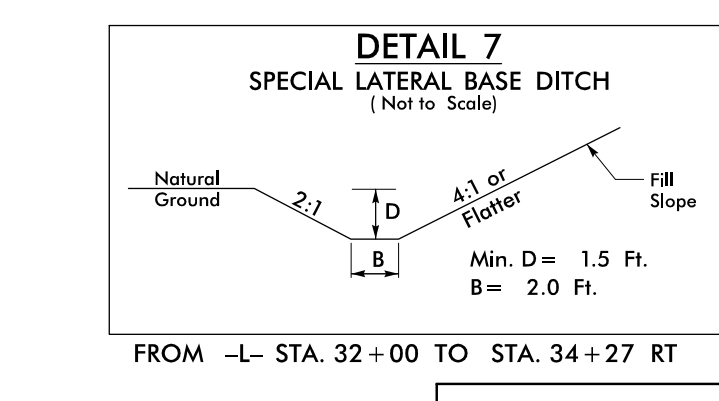
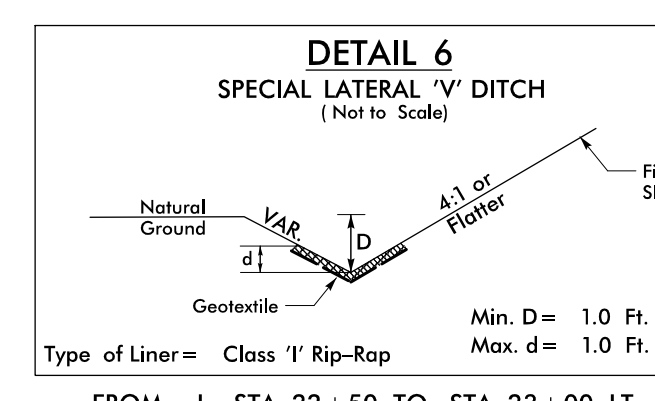
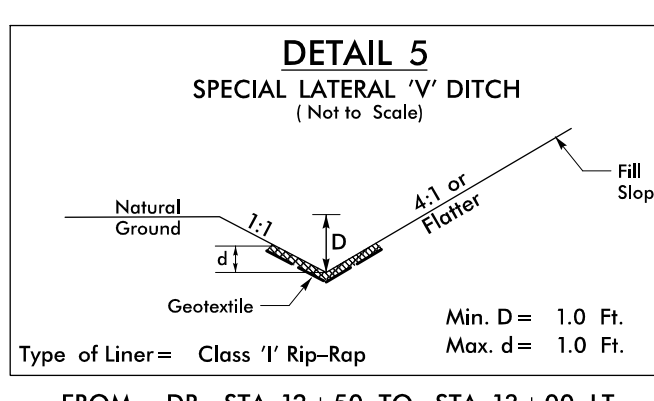
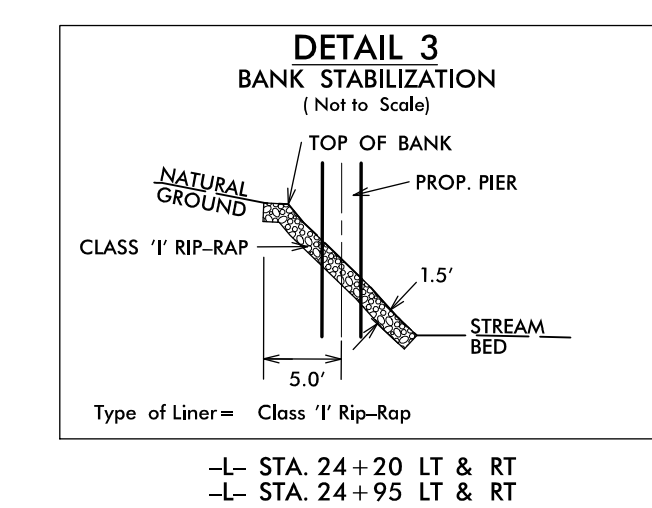
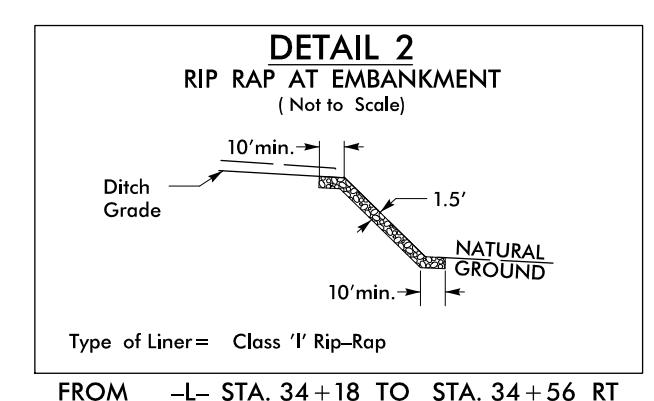
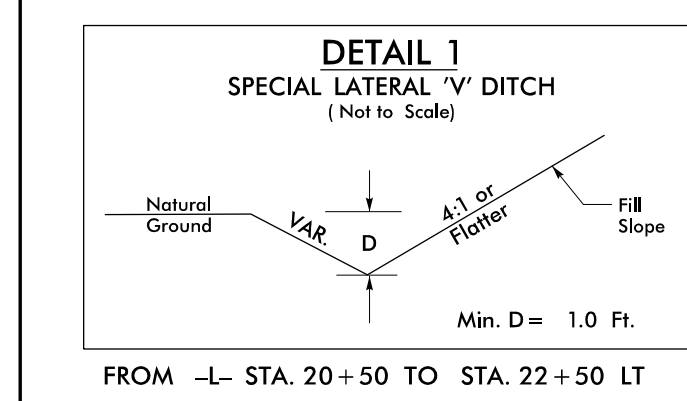
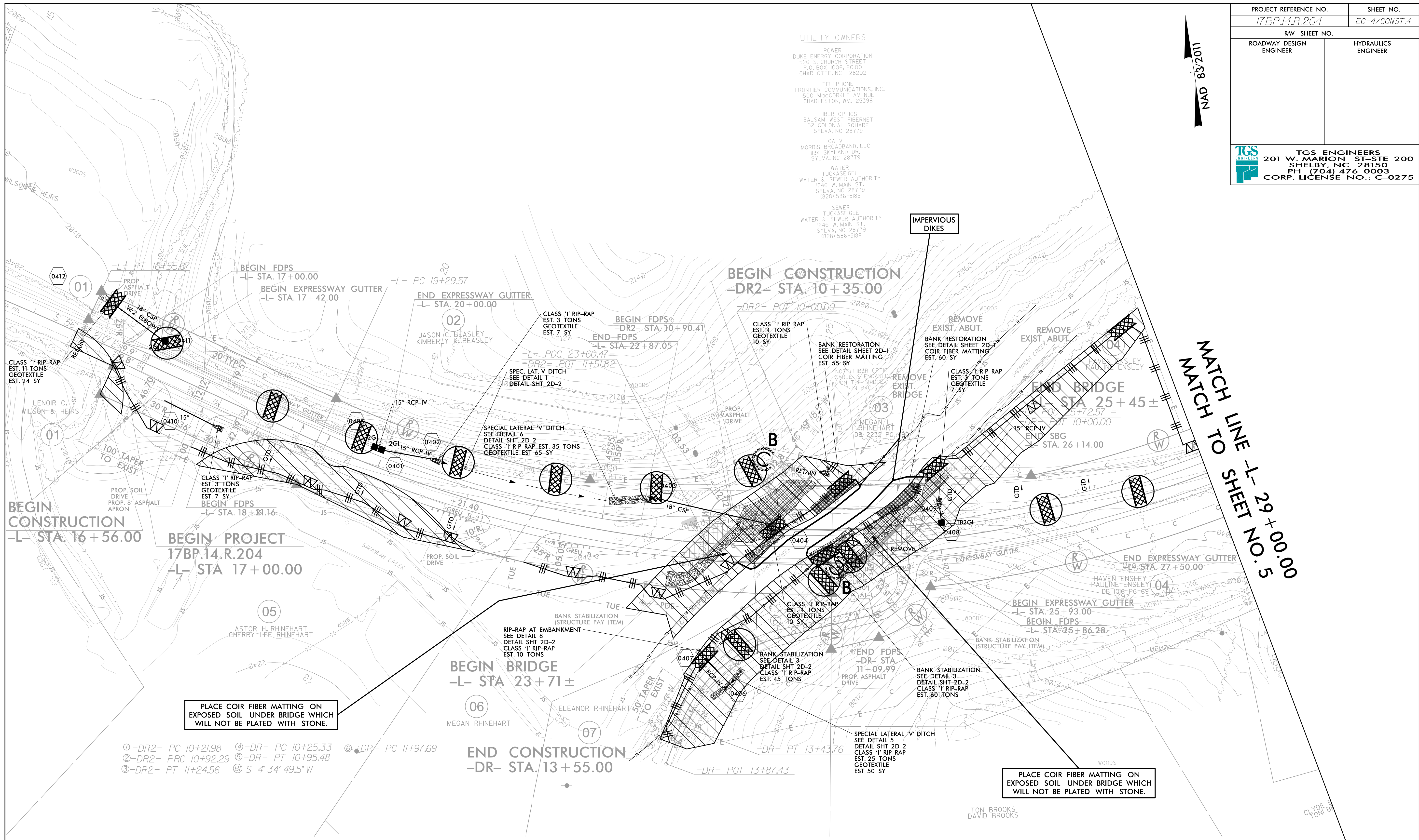


PROJECT REFERENCE NO. 17BP.14.R.204		SHEET NO. EC-4/CONST.4	
RW SHEET NO.			
ROADWAY DESIGN ENGINEER		HYDRAULICS ENGINEER	
 TGS ENGINEERS 201 W. MARION ST. STE 200 SHELBY, NC 28150 PH (704) 476-0003 CORP. LICENSE NO.: C-0275			

NAD 83/2011



- ① -DR2- PC 10+21.98 ③ -DR- PC 10+25.33 ⑤ -DR- PC 11+97.69
- ② -DR2- PRC 10+92.29 ④ -DR- PT 10+95.48
- ⑥ -DR2- PT 11+24.56 ⑦ S 4' 34" 49.5' W

PLACE COIR FIBER MATTING ON EXPOSED SOIL UNDER BRIDGE WHICH WILL NOT BE PLATED WITH STONE.

PLACE COIR FIBER MATTING ON EXPOSED SOIL UNDER BRIDGE WHICH WILL NOT BE PLATED WITH STONE.

NOTE: UTILIZE SPECIAL STILLING BASIN(S) AS STILLING BASIN WHERE APPLICABLE.

NOTE: PLACE TEMPORARY ROCK SEDIMENT DAMS TYPE - B AND TEMPORARY ROCK SILT CHECKS TYPE - A AT DRAINAGE OUTLETS.

 ENVIRONMENTALLY SENSITIVE AREA
SEE PROJECT SPECIAL PROVISIONS