

**Location and Surveys**

LOCATION AND SURVEYS, DIVISION 14  
122 BONNIE LANE  
SYLVA, NC 28779

PROJECT SURVEYOR



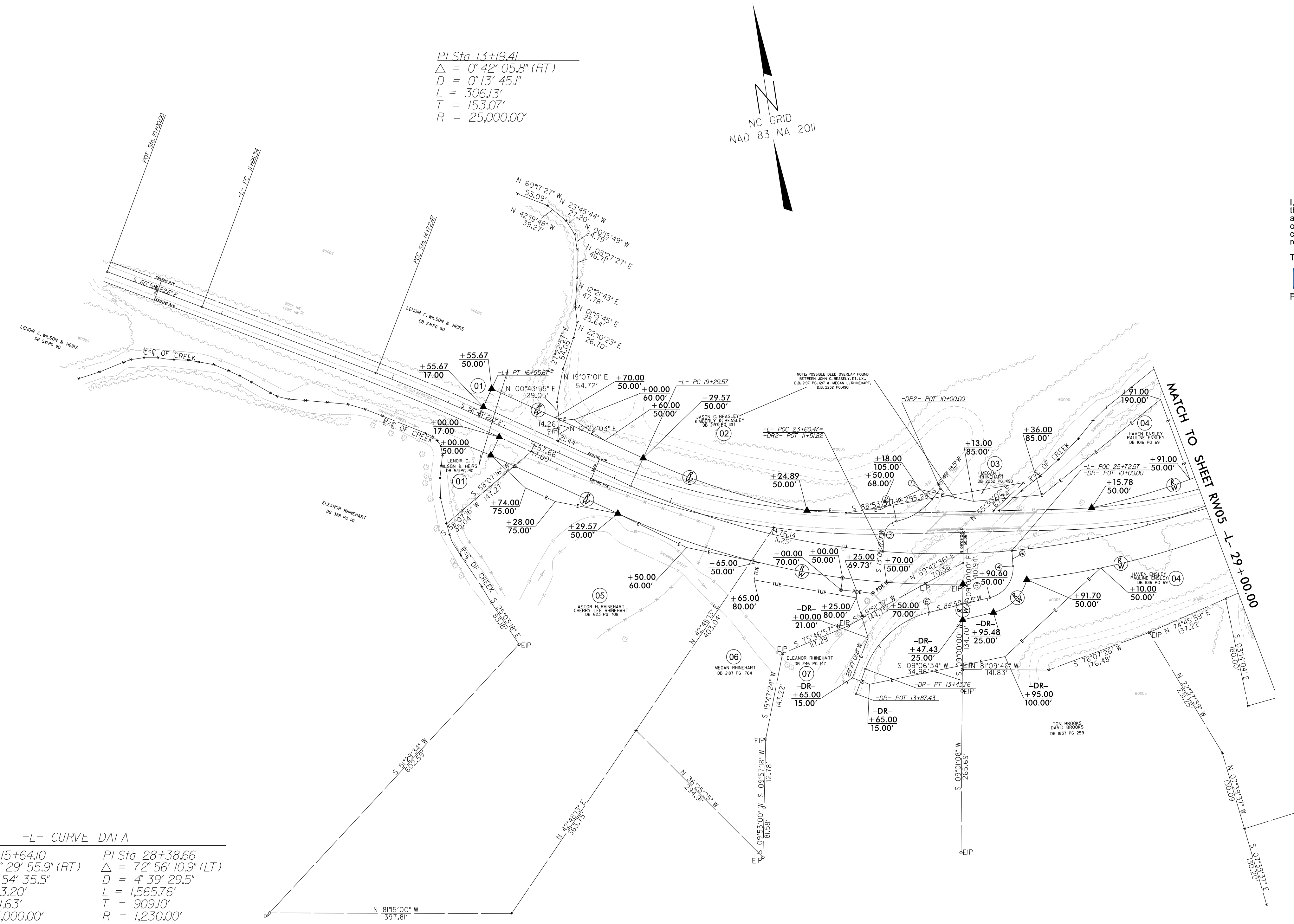
DOCUMENT NOT CONSIDERED FINAL  
UNLESS ALL SIGNATURES COMPLETED

I, Brian Barwatt, certify that the right of way and permanent easement monumentation for this project shown herein was completed under my direct and responsible charge from an actual survey made under my supervision; that all horizontal closures had a minimum ratio of precision of 1:10,000 (Class A). Field work was performed on September, 2022, and all coordinates are based on NAD83/2011. That this survey was performed to meet the requirements of 21NCAC 56.1600 as applicable.

This 10th day of October, 2023.  
DocuSigned by:  
*Brian Barwatt*  
Professional Land Surveyor L-4727

6/2/09

REVISIONS



PI Sta. 13+19.41  
Δ = 0° 42' 05.8" (RT)  
D = 0° 13' 45.1"  
L = 306.13'  
T = 153.07'  
R = 25,000.00'

**-L- CURVE DATA**

PI Sta 15+64.10	PI Sta 28+38.66
Δ = 3° 29' 55.9" (RT)	Δ = 7° 56' 10.9" (LT)
D = 1° 54' 35.5"	D = 4° 39' 29.5"
L = 183.20'	L = 1,565.76'
T = 91.63'	T = 909.10'
R = 3,000.00'	R = 1,230.00'
	SE = 04
	DS = 55 MPH

**-DR2- CURVE DATA**

PI Sta 10+58.66	PI Sta 11+11.11
Δ = 40° 17' 02.3" (RT)	Δ = 7° 3' 57' 02.9" (LT)
D = 57° 17' 44.8"	D = 229° 10' 59.2"
L = 70.31'	L = 32.27'
T = 36.68'	T = 18.82'
R = 100.00'	R = 25.00'

**-DR- CURVE DATA**

PI Sta 10+67.57	PI Sta 12+77.10
Δ = 80° 22' 58.1" (RT)	Δ = 55° 47' 45.8" (LT)
D = 114° 35' 29.6"	D = 38° 11' 49.9"
L = 70.15'	L = 146.07'
T = 42.24'	T = 79.41'
R = 50.00'	R = 150.00'

- ① -DR2- PC 10+21.98    ④ -DR- PC 10+25.33    ⑥ -DR- PC 11+97.69
- ② -DR2- PRC 10+92.29    ⑤ -DR- PT 10+95.48
- ③ -DR2- PT 11+24.56    ⑦ S 4° 34' 49.5" W

**NOTES:**

- IF FURTHER INFORMATION REGARDING PROJECT CONTROL IS NEEDED PLEASE CONTACT THE LOCATION AND SURVEYS UNIT.
- PROJECT CONTROL WAS ESTABLISHED USING GNSS, THE GLOBAL NAVIGATION SATELLITE SYSTEM.
- RIGHT OF WAY MONUMENTATION ESTABLISHED ON SEPTEMBER, 2022.

I:\01-2023\14105-C:\Sullivan\17BP.14.R.204\17BP.14.R.204.dgn  
 10/10/2023 14:05  
 C:\Sullivan\17BP.14.R.204\17BP.14.R.204.dgn  
 Brian Barwatt