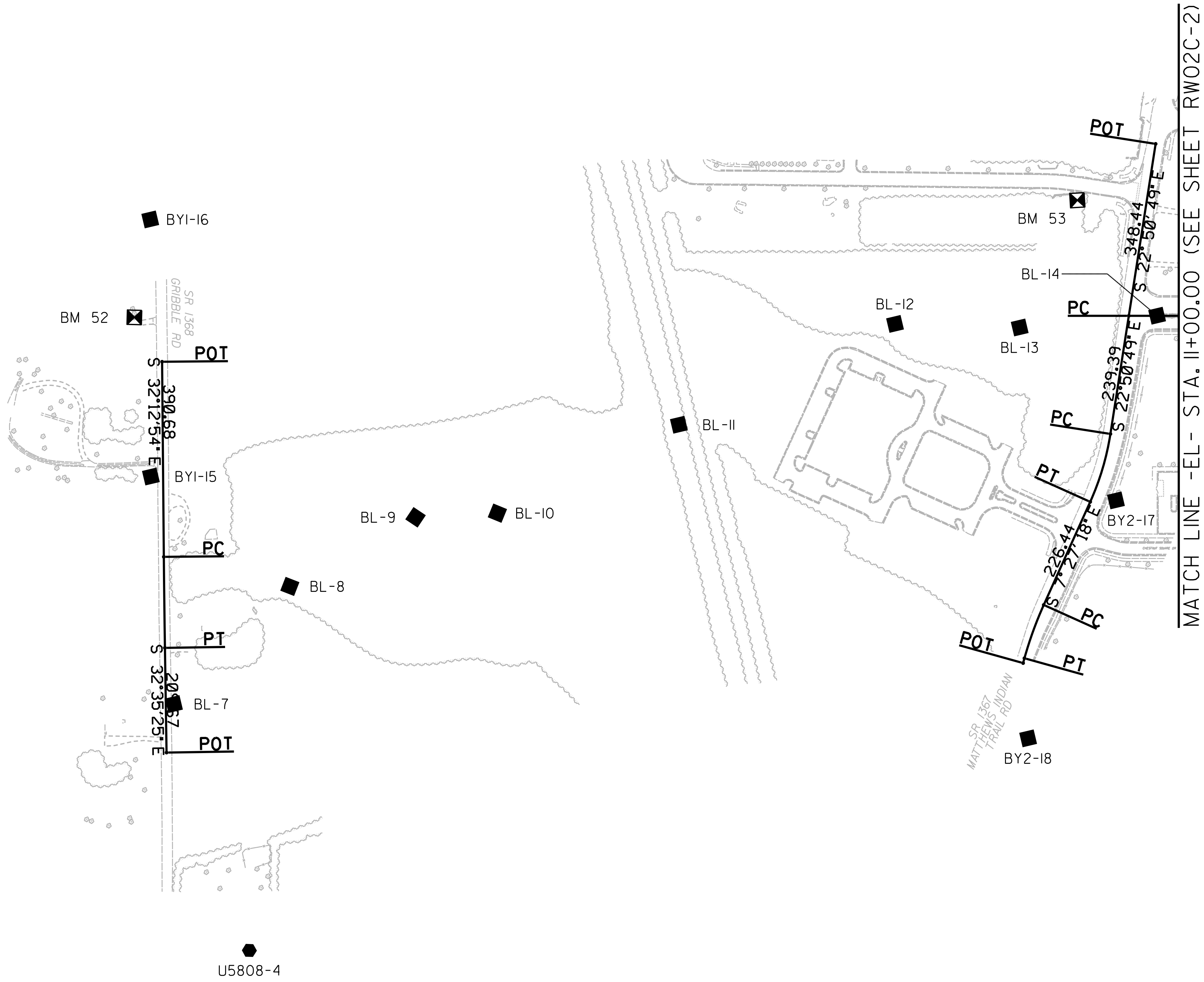
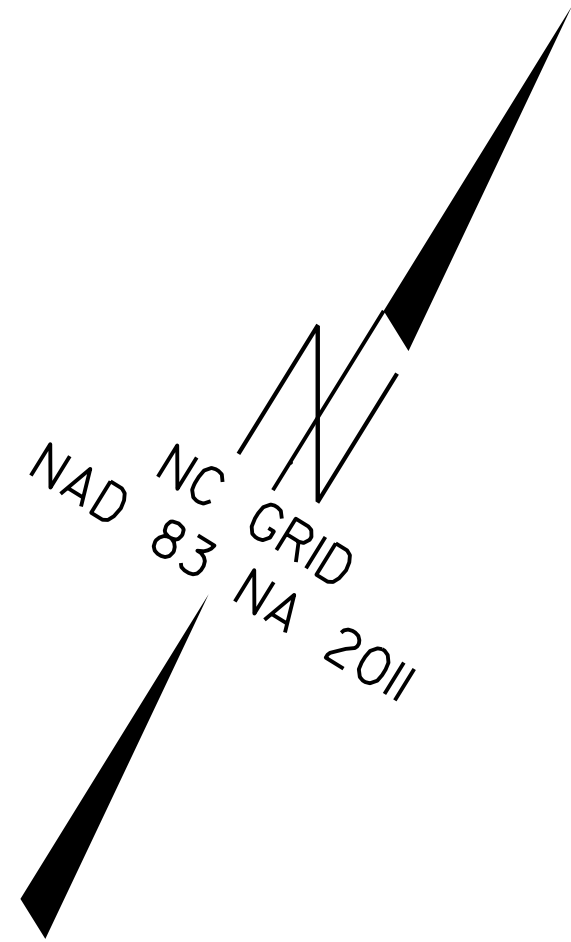


SURVEY CONTROL SHEET

W/ EXISTING CENTERLINE ALIGNMENTS PRIOR TO CONSTRUCTION



MATCH LINE -EL- STA. 11+00.00 (SEE SHEET RW02C-2)

U5808-3

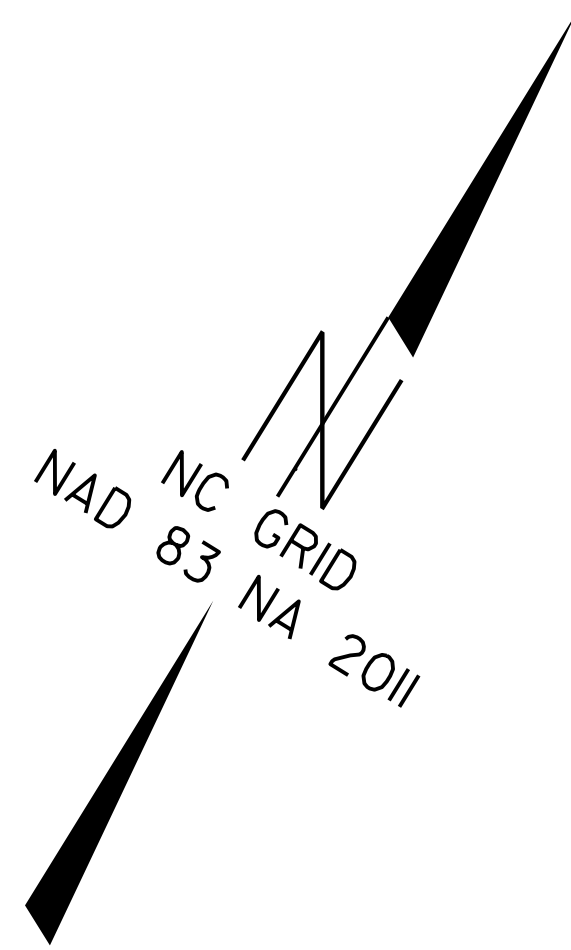
U5808-4

NOTES:

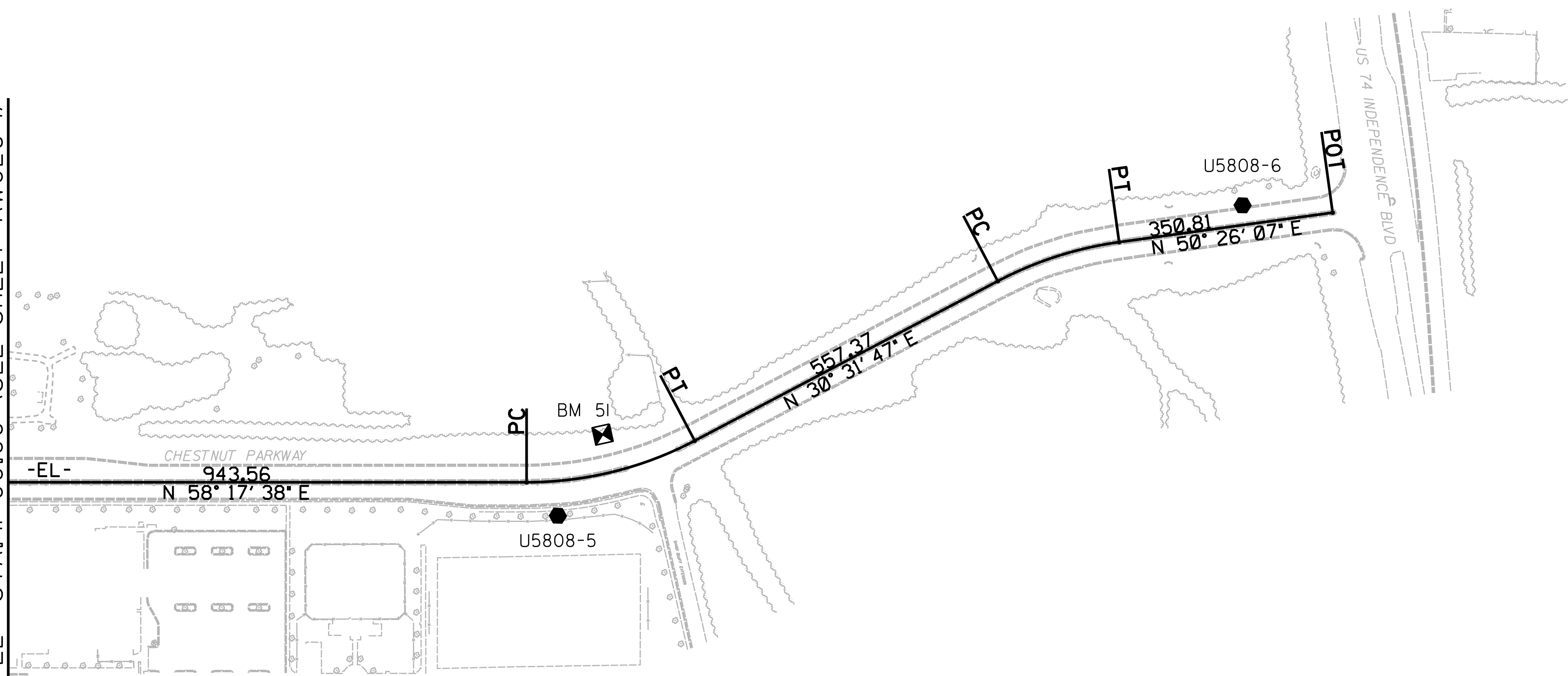
1. PROJECT CONTROL WAS ESTABLISHED USING GNSS, THE GLOBAL NAVIGATION SATELLITE SYSTEM.
2. THE SURVEY CONTROL DATA FOR THIS PROJECT HAS BEEN COMPILED FROM VARIOUS SOURCES. IF FURTHER INFORMATION REGARDING PROJECT CONTROL IS NEEDED, PLEASE CONTACT THE LOCATION AND SURVEYS UNIT.

SURVEY CONTROL SHEET

W/ EXISTING CENTERLINE ALIGNMENTS PRIOR TO CONSTRUCTION



MATCH LINE -EL- STA. II+00.00 (SEE SHEET RW02C-1)



NOTES:

1. PROJECT CONTROL WAS ESTABLISHED USING GNSS, THE GLOBAL NAVIGATION SATELLITE SYSTEM.
2. THE SURVEY CONTROL DATA FOR THIS PROJECT HAS BEEN COMPILED FROM VARIOUS SOURCES. IF FURTHER INFORMATION REGARDING PROJECT CONTROL IS NEEDED, PLEASE CONTACT THE LOCATION AND SURVEYS UNIT.

SURVEY CONTROL SHEET

W/ EXISTING CENTERLINE ALIGNMENTS PRIOR TO CONSTRUCTION

BL	POINT	DESC.	NORTH	EAST	ELEVATION
7		BL - 7	487536.9402	1499237.1137	703.83
8		BL - 8	487859.3944	1499310.6607	697.95
9		BL - 9	488109.4261	1499452.0403	695.80
10		BL - 10	488202.2742	1499587.4238	691.82
11		BL - 11	488544.1193	1499803.1539	696.01
12		BL - 12	488943.3286	1500065.1987	688.52
13		BL - 13	489068.4457	1500281.3067	689.93
14		BL - 14	489233.0840	1500502.9856	690.71
5		U5808-5	489679.5450	1501329.6730	692.37
6		U5808-6	490694.8314	1502012.3250	683.13

BY1	POINT	DESC.	NORTH	EAST	ELEVATION
16		BY1 - 16	488337.6321	1498686.6574	702.86
15		BY1 - 15	487900.3522	1498958.3140	704.88
17		BL - 7	487536.9402	1499237.1137	703.83
4		U5808-4	487196.6000	1499624.9350	710.28

BY2	POINT	DESC.	NORTH	EAST	ELEVATION
14		BL - 14	489233.0840	1500502.9856	690.71
17		BY2 - 17	488875.1450	1500627.2541	682.67
18		BY2 - 18	488377.3040	1500728.0929	683.59

```

*****
51      ELEVATION = 690.21
N 489830      E 1501322
R/R SPIKE IN 21 INCH OAK
*****
52      ELEVATION = 707.68
N 488154      E 1498763
R/R SPIKE IN 20 INCH PINE
*****
53      ELEVATION = 689.59
N 489346      E 1500246
R/R SPIKE IN 22 INCH OAK
*****

```

NOTES:

1. PROJECT CONTROL WAS ESTABLISHED USING GNSS, THE GLOBAL NAVIGATION SATELLITE SYSTEM.
2. THE SURVEY CONTROL DATA FOR THIS PROJECT HAS BEEN COMPILED FROM VARIOUS SOURCES. IF FURTHER INFORMATION REGARDING PROJECT CONTROL IS NEEDED, PLEASE CONTACT THE LOCATION AND SURVEYS UNIT.

REVISIONS

6/2/09

29-APR-2019 11:41
C:\Projects\U-5808\LS10-19-xxx-RW_sheets.Series.C_and.Series.D\U5808_Ls-rw02c-3.dgn
dstoples AT LS10-290087

SURVEY CONTROL SHEET

W/ EXISTING CENTERLINE ALIGNMENTS PRIOR TO CONSTRUCTION

EL									
POINT	N	E	BEARING	DIST	DELTA	D	L	T	R
POT	489203.184	1500455.033							
LINE			N 58°17'37.8" E	943.56					
PC	489699.086	1501257.773							
CURVE			N 44°24'42.2" E	281.82	27°45'51.2"(LT)	09°45'19.9"	284.60	145.15	587.32
PT	489900.401	1501454.995							
LINE			N 30°31'46.6" E	557.37					
PC	490380.499	1501738.129							
CURVE			N 40°28'56.8" E	207.48	19°54'20.5"(RT)	09°32'45.8"	208.52	105.32	600.20
PT	490538.306	1501872.825							
LINE			N 50°26'07.0" E	350.81					
POT	490761.755	1502143.267							

EY1									
POINT	N	E	BEARING	DIST	DELTA	D	L	T	R
POT	488107.690	1498856.753							
LINE			S 32°12'53.7" E	390.68					
PC	487777.157	1499065.022							
CURVE			S 32°24'09.4" E	182.31	00°22'31.4"(LT)	00°12'21.3"	182.31	91.15	27826.40
PT	487623.234	1499162.714							
LINE			S 32°35'25.1" E	209.67					
POT	487446.578	1499275.648							

EY2									
POINT	N	E	BEARING	DIST	DELTA	D	L	T	R
POT	489524.291	1500319.742							
LINE			S 22°50'49.2" E	348.44					
POT	489203.184	1500455.033							
LINE			S 22°50'49.2" E	239.39					
PC	488982.577	1500547.981							
CURVE			S 15°09'03.7" E	141.88	15°23'31.0"(RT)	10°48'56.6"	142.31	71.59	529.75
PT	488845.626	1500585.064							
LINE			S 07°27'18.2" E	226.44					
PC	488621.099	1500614.444							
CURVE			S 11°47'45.4" E	113.53	08°40'54.3"(LT)	07°38'22.0"	113.64	56.93	750.00
PT	488509.962	1500637.654							
LINE			S 16°08'12.5" E	10.00					
POT	488500.356	1500640.433							

NOTES:

1. PROJECT CONTROL WAS ESTABLISHED USING GNSS, THE GLOBAL NAVIGATION SATELLITE SYSTEM.
2. THE SURVEY CONTROL DATA FOR THIS PROJECT HAS BEEN COMPILED FROM VARIOUS SOURCES. IF FURTHER INFORMATION REGARDING PROJECT CONTROL IS NEEDED, PLEASE CONTACT THE LOCATION AND SURVEYS UNIT.

REVISIONS

6/2/09

29-APR-2019 11:39
 C:\Projects\U-5808\LS10-19-xxx-RW_sheets.Series.C_and.Series.D\U-5808-LS-rw02c-4.dgn
 At: LS10-291087

PROPOSED ALIGNMENT CONTROL SHEET

PROJECT REFERENCE NO. U-5808	SHEET NO. RW02D-1
Location and Surveys	

L1

TYPE	STATION	NORTH	EAST
POT	40+00.00	487570.4544	1498663.9632
PC	41+36.61	487664.9874	1498762.5793
PT	43+17.10	487791.8284	1498890.9762
POT	44+53.06	487888.8213	1498986.2492

Y1A

TYPE	STATION	NORTH	EAST
POT	10+00.00	488107.6904	1498856.7530
PC	10+52.26	488063.4760	1498884.6124
PT	10+98.98	488025.4946	1498911.7650
POT	12+76.94	487887.0037	1499023.5386

Y1B

TYPE	STATION	NORTH	EAST
POT	10+00.00	487855.1724	1498984.9840
PC	11+48.07	487742.0431	1499080.5204
PT	12+27.56	487678.0997	1499127.6386
POT	13+50.00	487574.9378	1499193.5887

DR1

TYPE	STATION	NORTH	EAST
POT	10+00.00	487953.8826	1498689.8964
POT	12+23.16	488072.8499	1498878.7059

L2

TYPE	STATION	NORTH	EAST
POT	44+53.44	487853.8382	1499021.9729
PC	47+36.20	488056.1606	1499219.4952
PRC	49+98.34	488271.6154	1499366.4641
PRC	61+03.19	489030.1423	1500135.3157
PT	63+17.72	489129.4795	1500325.2585
PC	66+93.36	489326.9010	1500644.8342
PRC	69+44.41	489456.4954	1500859.8473
PT	71+95.46	489586.0898	1501074.8605
PC	74+10.46	489699.0859	1501257.7727
PT	76+95.06	489900.4006	1501454.9953
PC	82+52.43	490380.4990	1501738.1290
PT	84+60.96	490538.3060	1501872.8253
POT	88+11.77	490761.7547	1502143.2674

Y2

TYPE	STATION	NORTH	EAST
POT	10+00.00	489524.2909	1500319.7421
PC	10+50.00	489478.2137	1500339.1557
PRC	11+42.76	489392.4457	1500374.4773
PT	12+35.51	489306.6777	1500409.7989
PC	15+92.86	488977.3726	1500548.5440
PT	17+36.04	488839.5798	1500585.8550
PC	19+56.38	488621.0993	1500614.4442
PT	20+70.03	488509.9620	1500637.6538

NOTES:

1. PROJECT CONTROL WAS ESTABLISHED USING GNSS, THE GLOBAL NAVIGATION SATELLITE SYSTEM.
2. THE PROPOSED ALIGNMENT CONTROL DATA FOR THIS PROJECT HAS BEEN COMPILED FROM VARIOUS SOURCES. IF FURTHER INFORMATION REGARDING PROJECT CONTROL IS NEEDED, PLEASE CONTACT THE LOCATION AND SURVEYS UNIT.

REVISIONS

6/2/09

C:\P\2010\1152\Projects\5808\10-19-xxx\RW_sheets.Series.C_and.Series.D\5808_1s_rw02d-1.dgn