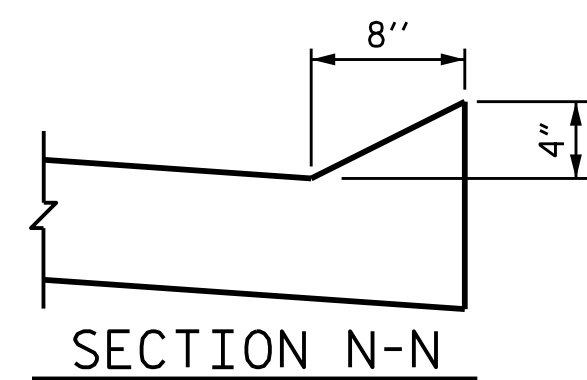


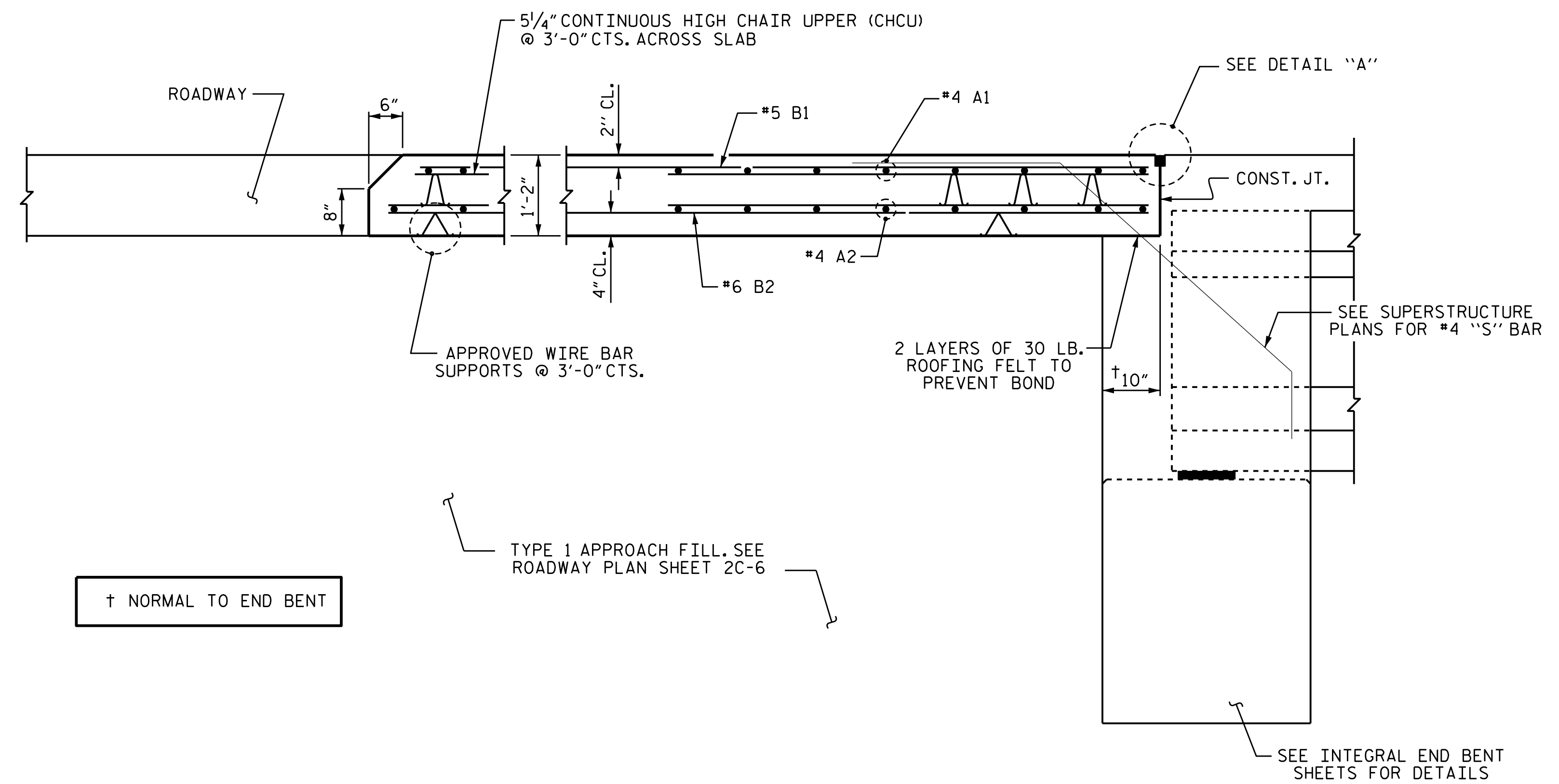
PLAN @ END BENT 1

PLAN @ END BENT 2

DIMENSIONS SHOWN ARE TYPICAL FOR BOTH APPROACH SLABS

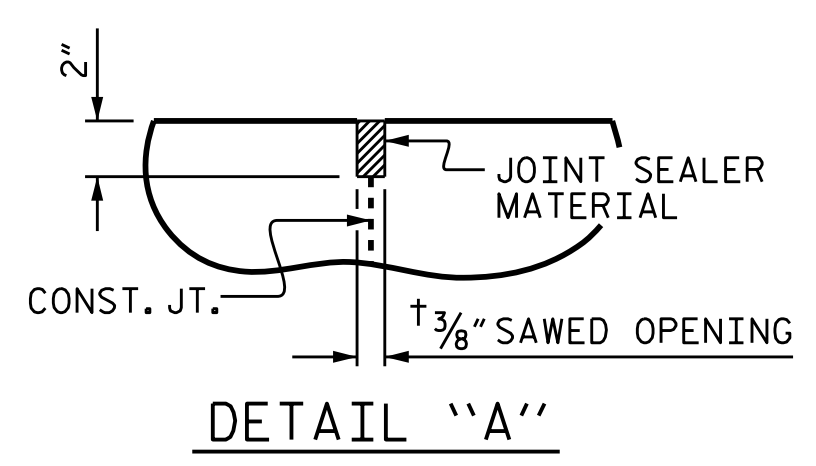


SECTION N-N

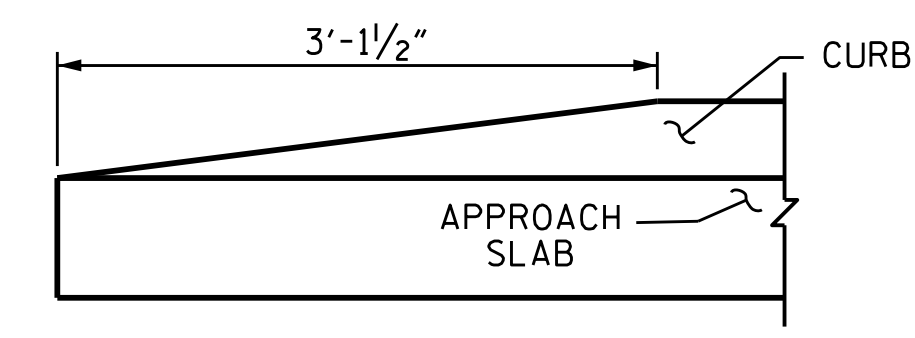


SECTION THRU SLAB

(TYPE I - STANDARD APPROACH FILL)



DETAIL 'A'



END OF CURB WITHOUT SHOULDER BERM GUTTER

NOTES

FOR BRIDGE APPROACH FILL, SEE ROADWAY PLANS.

APPROACH SLAB SHALL NOT BE CONSTRUCTED PRIOR TO COMPLETION OF THE BRIDGE DECK.

SELECT MATERIAL BACKFILL IS TO BE CONTINUOUS ALONG FILL FACE OF BACKWALL FROM OUTSIDE EDGE TO OUTSIDE EDGE OF APPROACH SLAB.

AREA BETWEEN THE WINGWALL AND APPROACH SLAB SHALL BE GRADED TO DRAIN THE WATER AWAY FROM THE FILL FACE OF THE BRIDGE AND SHALL BE PAVED. SEE ROADWAY PLANS.

THE JOINT OPENING AT THE APPROACH SLAB/DECK INTERFACE SHALL BE SAWED NO MORE THAN 12 HOURS AFTER THE APPROACH SLAB IS CAST. THE JOINT SHALL BE CLEANED OF ALL DEBRIS BEFORE THE SEALANT IS APPLIED. THE JOINT SEALER MATERIAL SHALL CONFORM TO THE REQUIREMENTS OF SECTION 1028-3 OF THE STANDARD SPECIFICATIONS.

AT THE CONTRACTORS OPTION, "TYPE 1A - ALTERNATE APPROACH FILL" (ROADWAY PLAN 2C-6) MAY BE CONSTRUCTED AT NO ADDITIONAL COST TO THE DEPARTMENT IN LIEU OF "TYPE 1 - APPROACH FILL".

BILL OF MATERIAL

FOR ONE APPROACH SLAB (2 REQ'D)

| BAR                              | NO. | SIZE | TYPE | LENGTH | WEIGHT |
|----------------------------------|-----|------|------|--------|--------|
| * A1                             | 52  | #4   | STR  | 21'-6" | 747    |
| A2                               | 52  | #4   | STR  | 21'-6" | 747    |
| * B1                             | 82  | #5   | STR  | 24'-2" | 2067   |
| B2                               | 82  | #6   | STR  | 24'-8" | 3038   |
| REINFORCING STEEL                |     |      |      | LBS.   | 3785   |
| * EPOXY COATED REINFORCING STEEL |     |      |      | LBS.   | 2814   |
| CLASS AA CONCRETE                |     |      |      | C. Y.  | 45.0   |

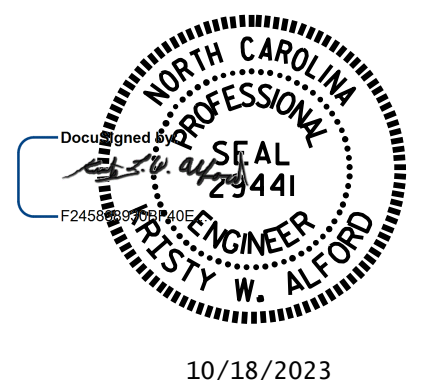
SPLICE LENGTHS

| BAR SIZE | EPOXY COATED | UNCOATED |
|----------|--------------|----------|
| #4       | 1'-11"       | 1'-7"    |
| #5       | 2'-5"        | 2'-0"    |
| #6       | 3'-7"        | 2'-5"    |

|                             |                      |
|-----------------------------|----------------------|
| ASSEMBLED BY : S. T. SANDOR | DATE : 9/15/23       |
| CHECKED BY : P. D. BRYANT   | DATE : 9/15/23       |
| DRAWN BY : TLA 10/05        | REV. 12/21/11 MAA/GM |
| CHECKED BY : GM 5/06        | REV. 6/13 MAA/GM     |
|                             | REV. 12/17 MAA/THC   |

| REVISIONS |     |       |     |     |       | SHEET NO.    |
|-----------|-----|-------|-----|-----|-------|--------------|
| NO.       | BY: | DATE: | NO. | BY: | DATE: | S-30         |
| 1         |     |       | 3   |     |       | TOTAL SHEETS |
| 2         |     |       | 4   |     |       | 31           |

DOCUMENT NOT CONSIDERED FINAL UNLESS ALL SIGNATURES COMPLETED



PROJECT NO. BR-0046  
SAMPSON COUNTY  
STATION: 24+30.00-L-

SHEET 1 OF 2  
STATE OF NORTH CAROLINA  
DEPARTMENT OF TRANSPORTATION  
RALEIGH  
STANDARD  
BRIDGE APPROACH SLAB FOR INTEGRAL ABUTMENT WITH FLEXIBLE PAVEMENT