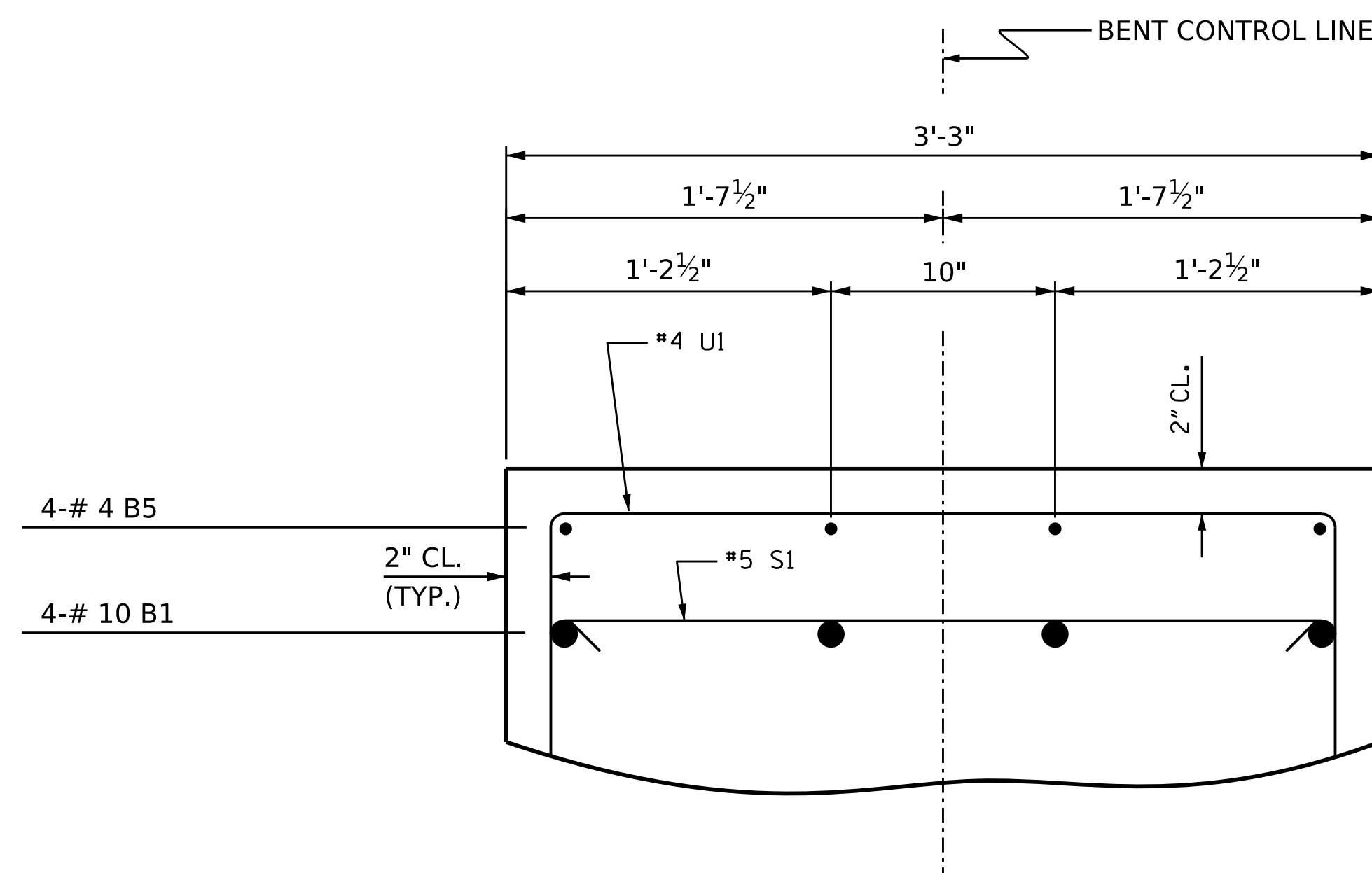
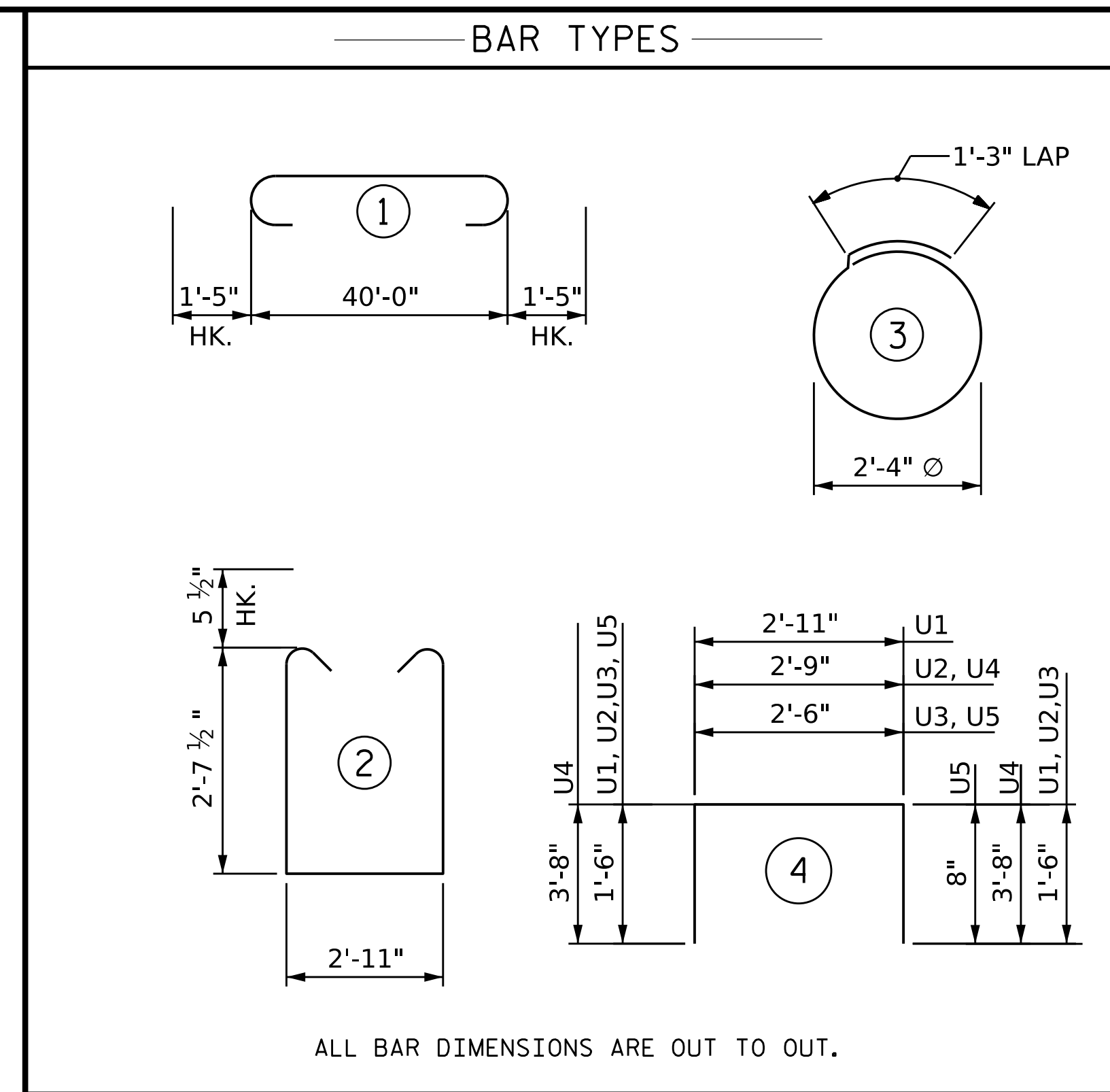


SECTION A-A



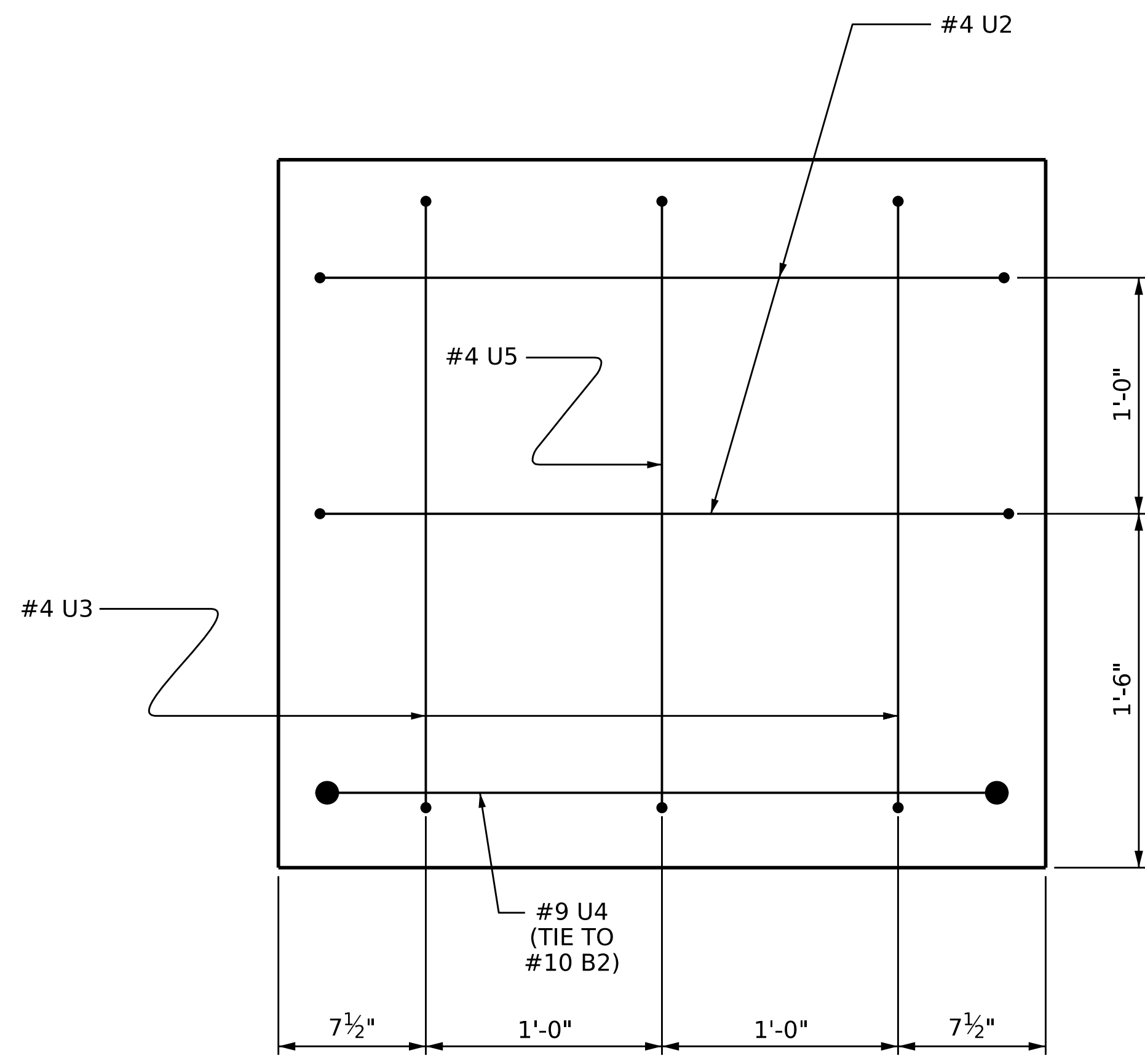
SECTION B-B



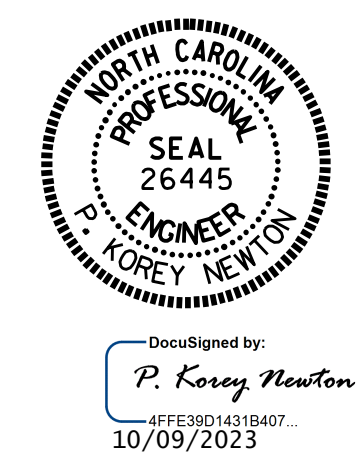
ALL BAR DIMENSIONS ARE OUT TO OUT.

BILL OF MATERIAL					
FOR ONE BENT					
BAR	NO.	SIZE	TYPE	LENGTH	WEIGHT
B1	4	#10	1	42'-10"	737
B2	4	#10	STR	40'-2"	691
B3	8	#4	STR	40'-0"	214
B4	11	#4	STR	2'-11"	21
B5	4	#4	STR	2'-8"	7
S1	64	#5	2	9'-1"	606
S2	12	#4	3	8'-7"	69
U1	30	#4	4	5'-11"	119
U2	4	#4	4	5'-9"	15
U3	4	#4	4	5'-6"	15
U4	2	#9	4	10'-1"	69
U5	2	#4	4	4'-8"	6
REINFORCING STEEL (FOR ONE BENT)					2569 LBS
CLASS A CONCRETE BREAKDOWN (FOR ONE BENT)					
TOTAL CLASS A CONCRETE					▲ 14.5 C.Y.

▲ CONCRETE DISPLACED BY THE 18" STEEL PIPE PILE HAS BEEN DEDUCTED FROM THE CONCRETE QUANTITY.



END OF CAP VIEW
(TYPICAL BOTH ENDS)



PROJECT NO. **BR-0046**
SAMPSON COUNTY
 STATION: **24+30.00 -L-**
 SHEET 2 OF 3

STATE OF NORTH CAROLINA
 DEPARTMENT OF TRANSPORTATION
 RALEIGH
 SUBSTRUCTURE
BENTS 1 & 2

DRAWN BY :	P. D. BRYANT	DATE :	8/31/22
CHECKED BY :	D. R. SHACKELFORD	DATE :	8/31/22
DESIGN ENGINEER OF RECORD:	P. D. BRYANT	DATE :	9/13/23

DOCUMENT NOT CONSIDERED
 FINAL UNLESS ALL
 SIGNATURES COMPLETED

REVISIONS						SHEET NO.
NO.	BY:	DATE:	NO.	BY:	DATE:	S-24
1			3			TOTAL SHEETS
2			4			31