

### Location and Surveys

LOCATION & SURVEYS UNIT  
DIVISION 3  
5310 BARBADOS BLVD., SUITE 102  
CASTLE HAYNE, N.C., 28429

PROJECT SURVEYOR

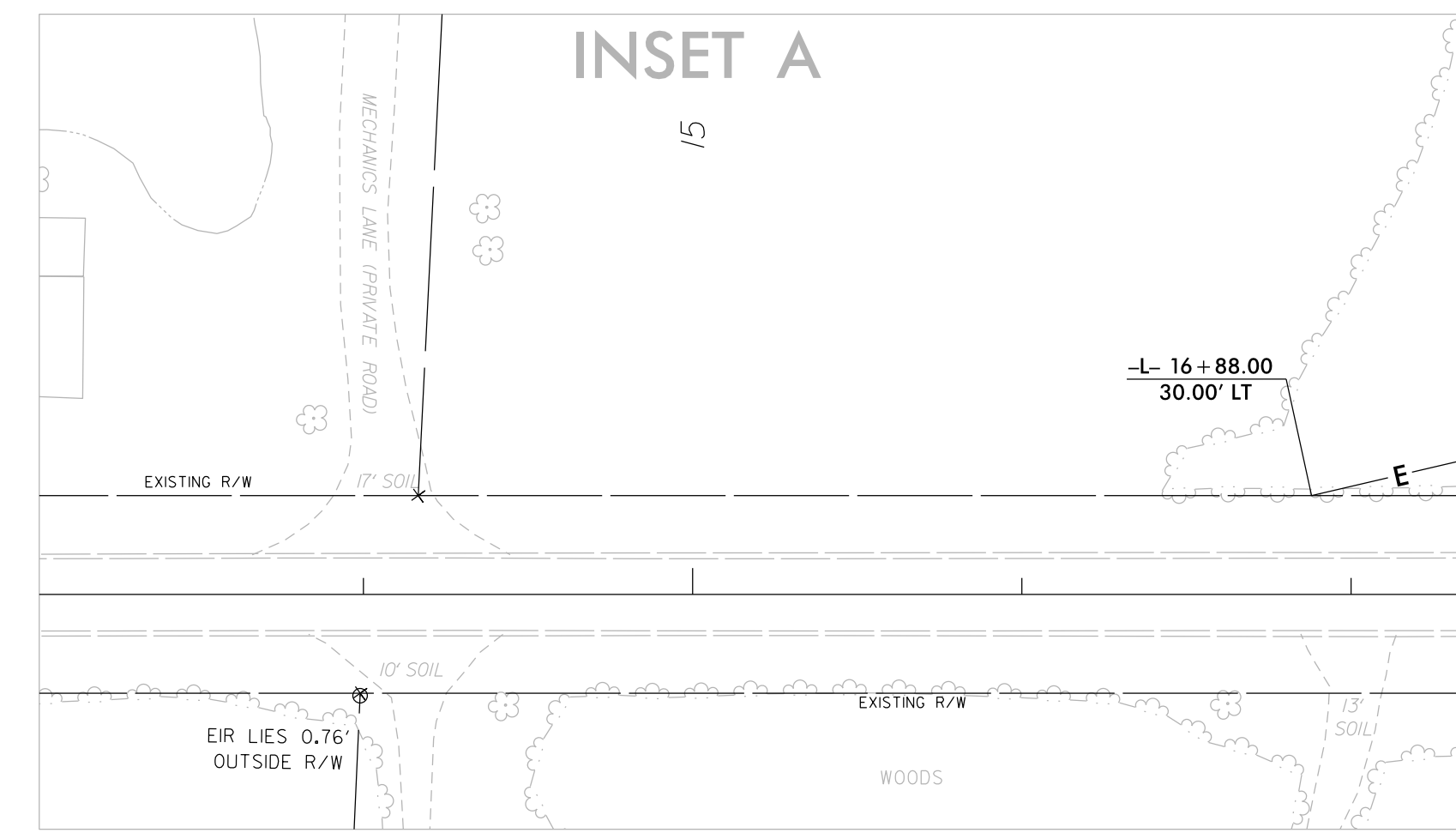
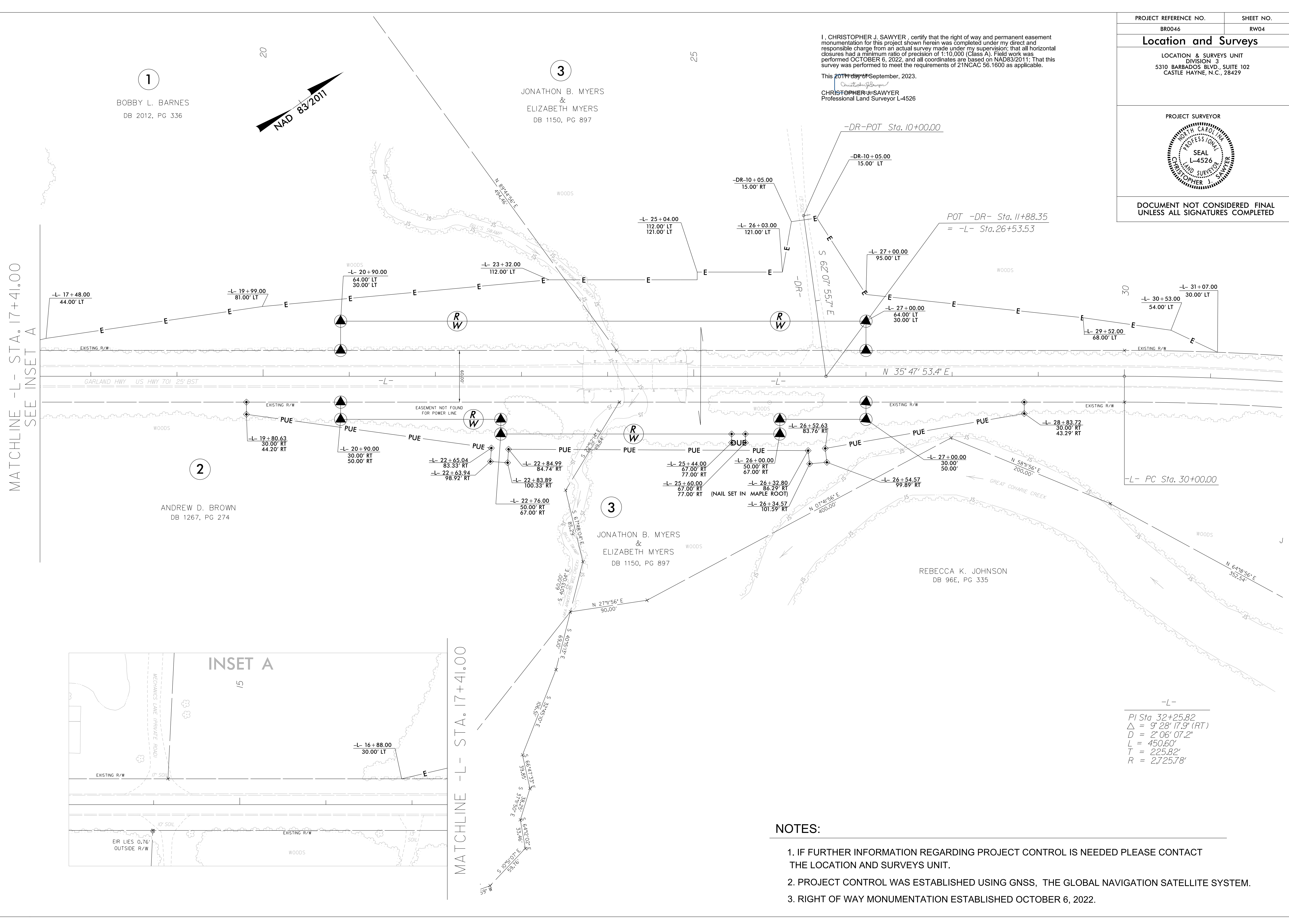


DOCUMENT NOT CONSIDERED FINAL  
UNLESS ALL SIGNATURES COMPLETED

I, CHRISTOPHER J. SAWYER, certify that the right of way and permanent easement monumentation for this project shown herein was completed under my direct and responsible charge from an actual survey made under my supervision; that all horizontal closures had a minimum ratio of precision of 1:10,000 (Class A). Field work was performed OCTOBER 6, 2022, and all coordinates are based on NAD83/2011; That this survey was performed to meet the requirements of 21NCAC 56.1600 as applicable.  
This Survey was performed on September, 2023.  
CHRISTOPHER J. SAWYER  
Professional Land Surveyor L-4526

MATCHLINE -L- STA. 17+41.00  
SEE INSET A

MATCHLINE -L- STA. 17+41.00



-L-  
PI Sta 32+25.82  
 $\Delta = 9' 28' 17.9''$  (RT)  
D = 2' 06' 07.2"  
L = 450.60'  
T = 225.82'  
R = 2,725.78'

### NOTES:

1. IF FURTHER INFORMATION REGARDING PROJECT CONTROL IS NEEDED PLEASE CONTACT THE LOCATION AND SURVEYS UNIT.
2. PROJECT CONTROL WAS ESTABLISHED USING GNSS, THE GLOBAL NAVIGATION SATELLITE SYSTEM.
3. RIGHT OF WAY MONUMENTATION ESTABLISHED OCTOBER 6, 2022.

REVISIONS

C:\SEF-2023\1505\Projects\BRIDGE\Simpson\BR-0046\_0022\Working\150\_series\_plans\BR0046\_Rdy\_PSH04.dgn  
 6/2/19  
 m.juliano

1  
BOBBY L. BARNES  
DB 2012, PG 336

3  
JONATHON B. MYERS  
&  
ELIZABETH MYERS  
DB 1150, PG 897

2  
ANDREW D. BROWN  
DB 1267, PG 274

3  
JONATHON B. MYERS  
&  
ELIZABETH MYERS  
DB 1150, PG 897

REBECCA K. JOHNSON  
DB 96E, PG 335