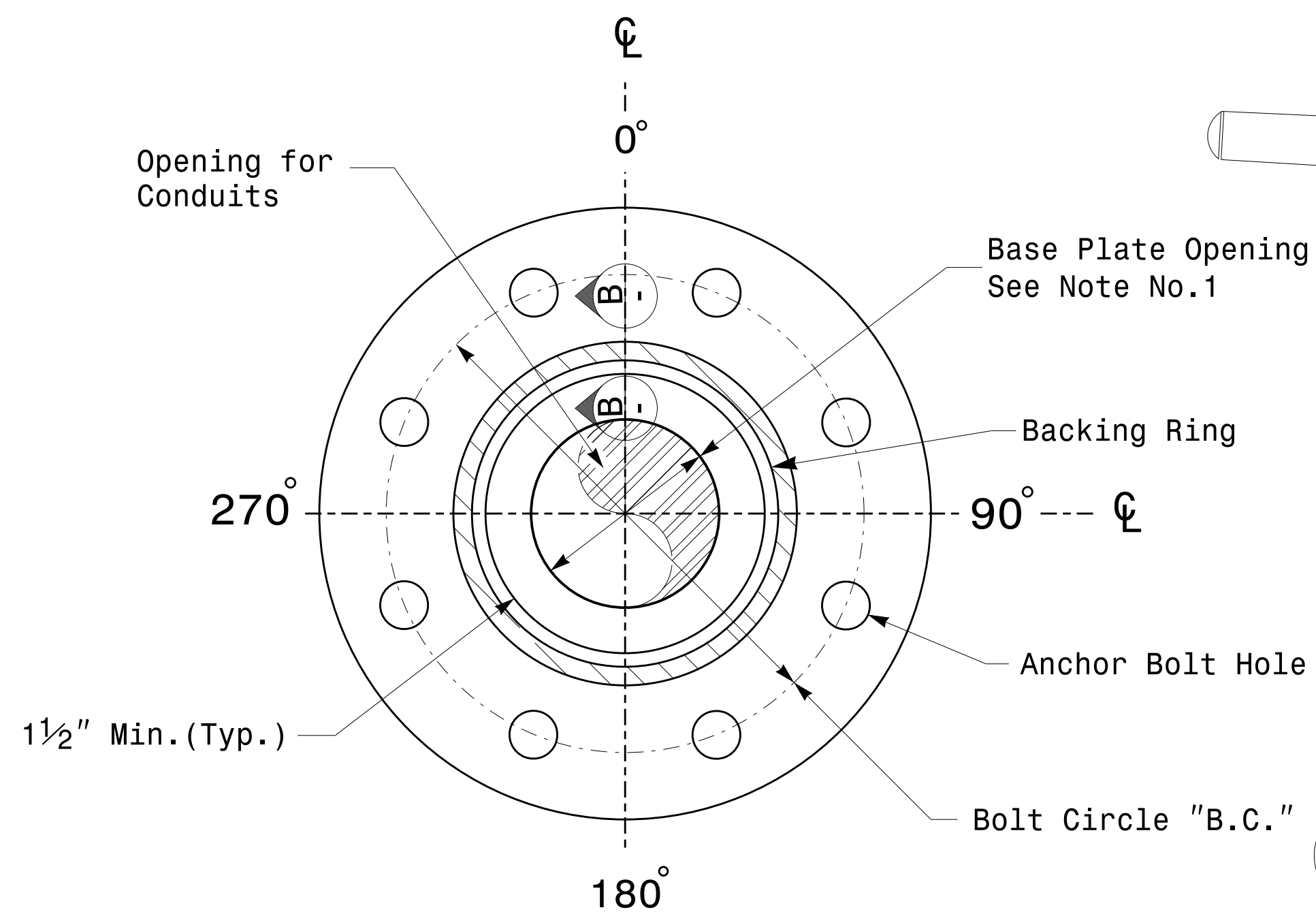
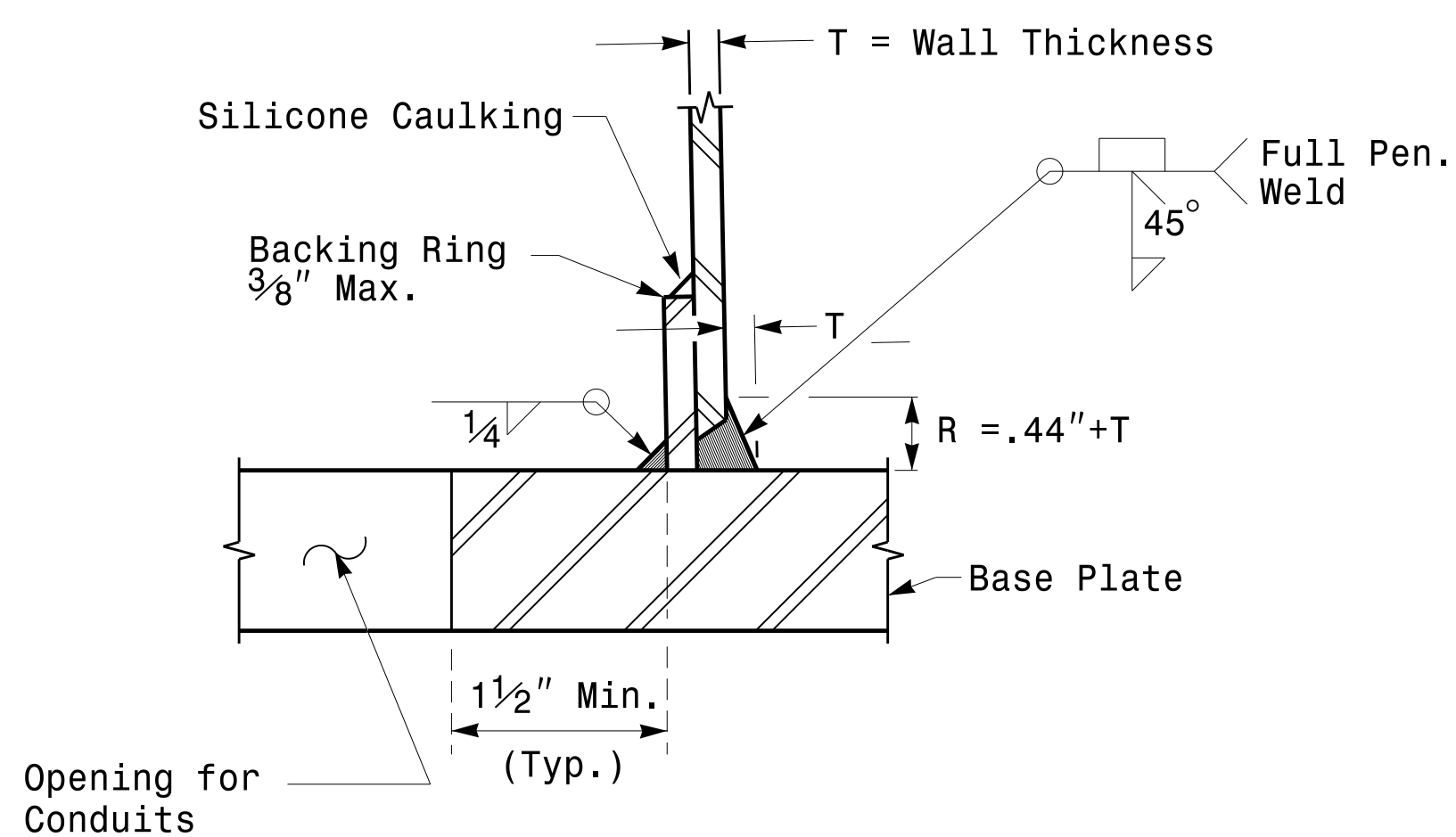


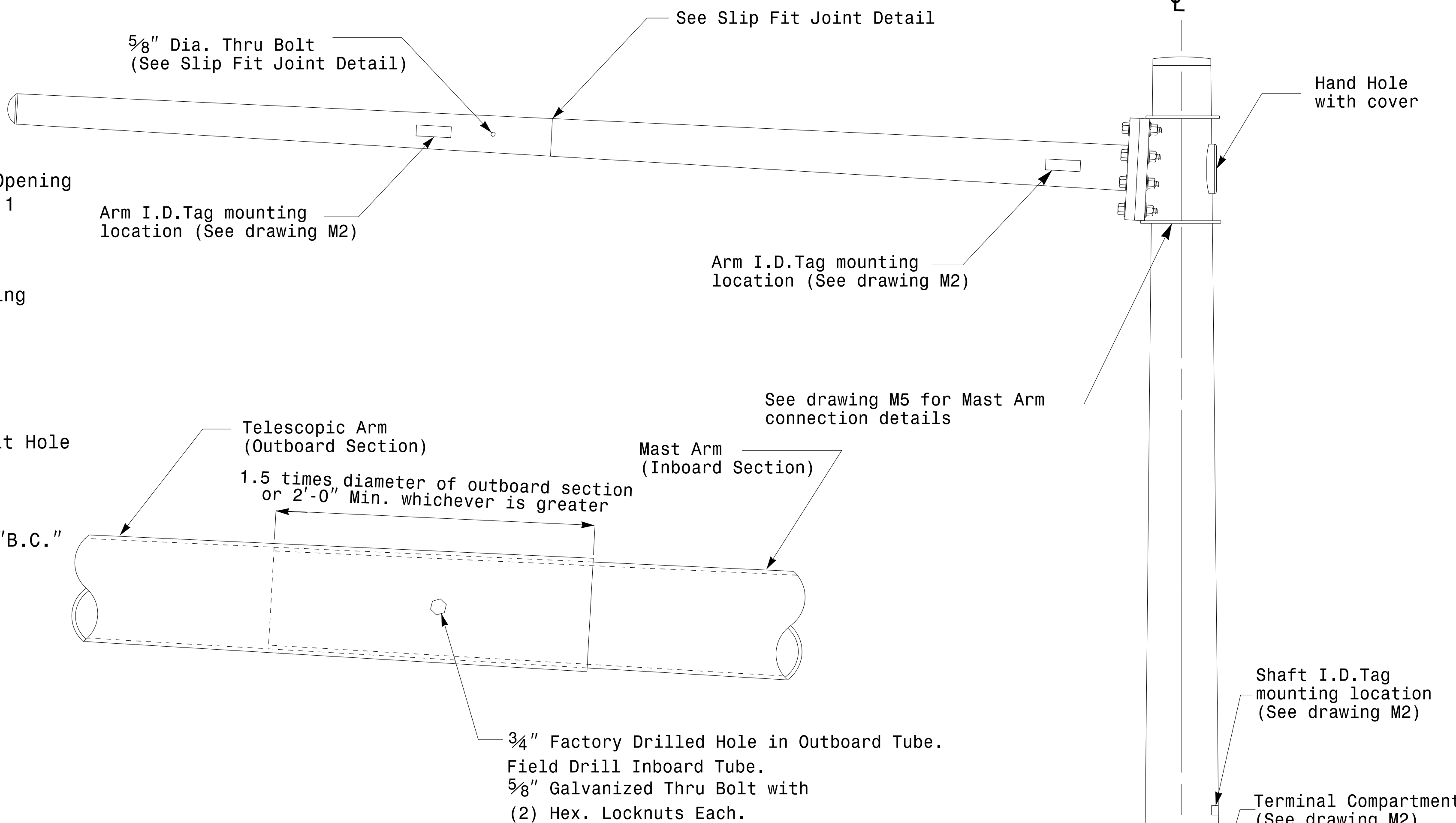
Note:  
 1. Opening in pole base plate shall be equal to pole base inside diameter minus 3 1/2" but shall not be less than 8 1/2".



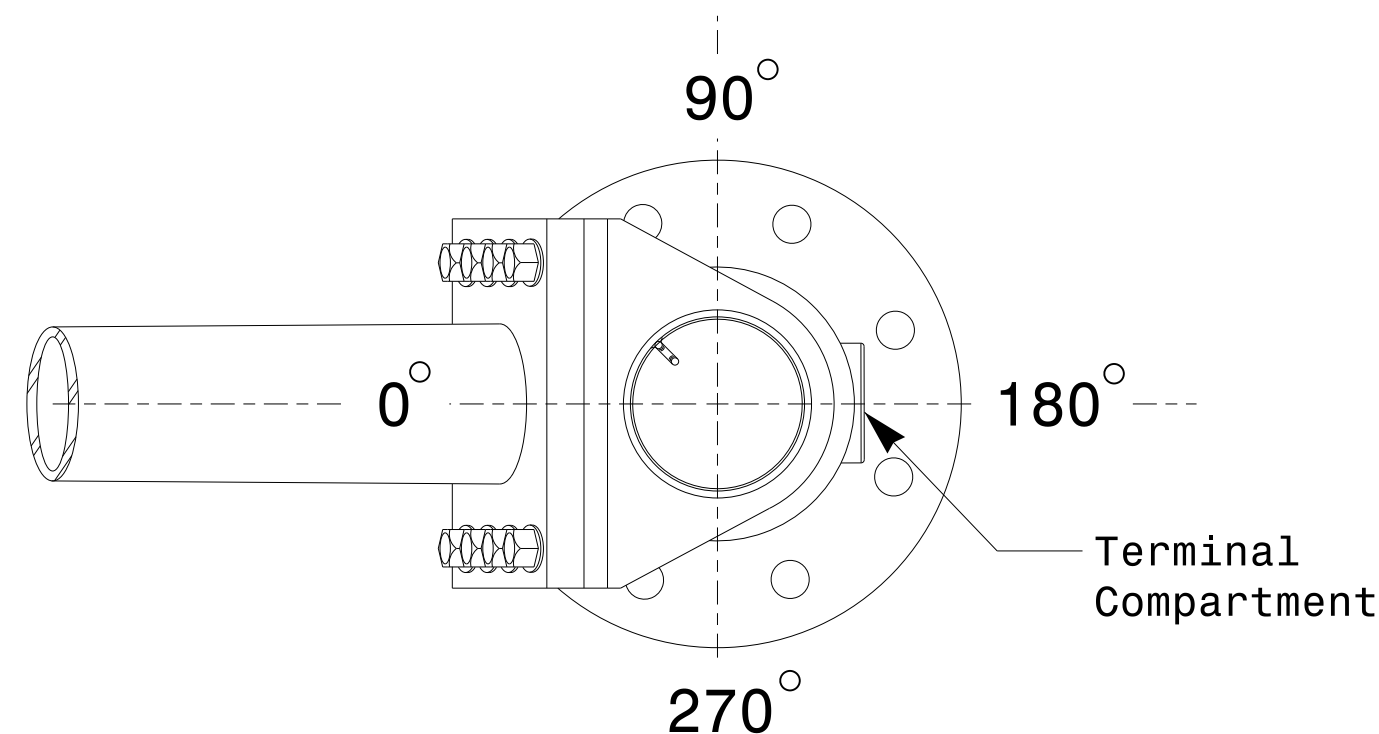
Section A-A  
 Pole Base Plate Details



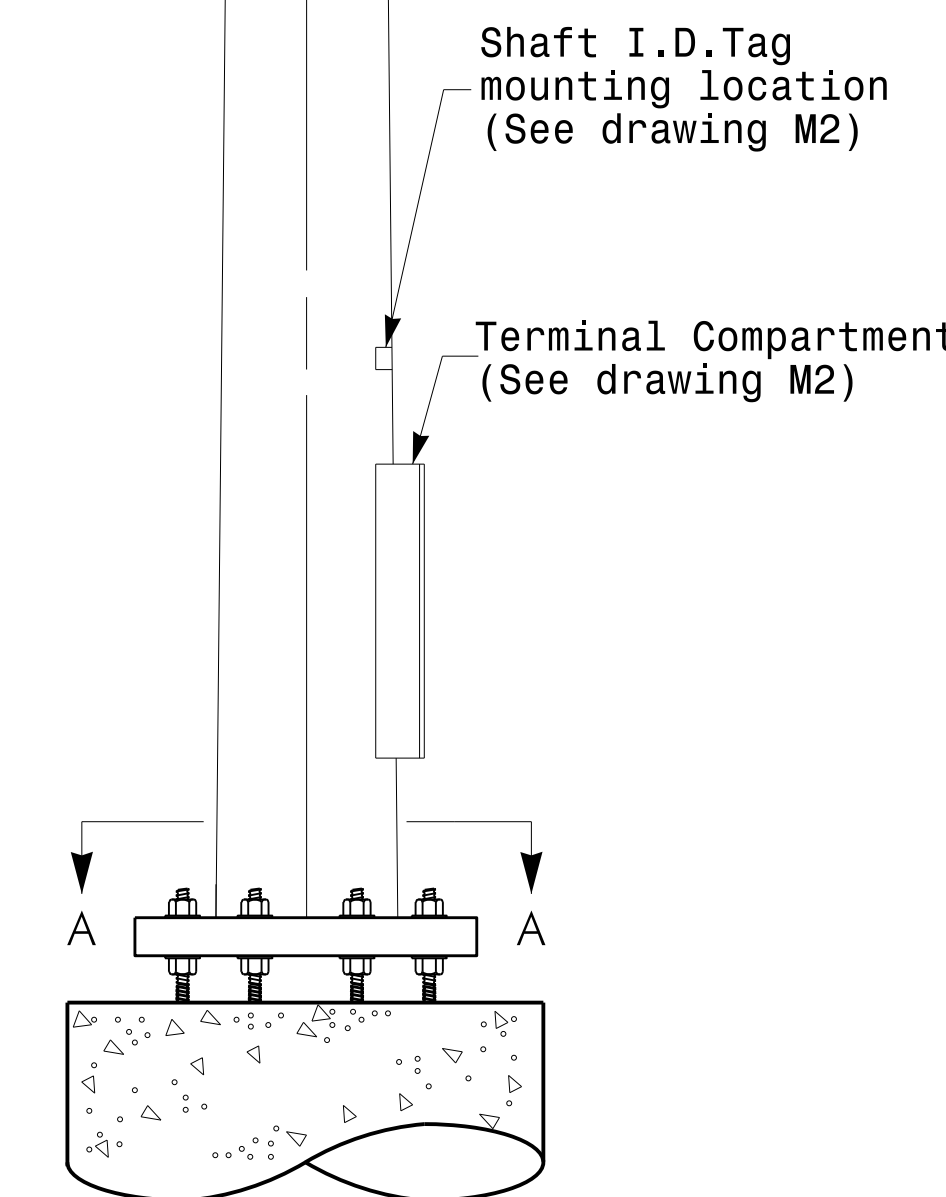
Section B-B  
 (Pole Attachment to Base Plate)  
 Full-Penetration Groove Weld Detail



Slip Fit Joint Detail for Mast Arm



Mast Arm Radial Orientation



Mast Arm Pole

Fabrication Details – Mast Arm Poles

	Typical Fabrication Details For Mast Arm Poles		SEAL 
	PLAN DATE: OCTOBER 2017 PREPARED BY: N. BITTING	DESIGNED BY: K.C. DURIGON REVIEWED BY: D.C. SARKAR	
SCALE: 0 NA NONE	DocuSigned by: Dinesh C. Sarkar 10/11/2017		DATE

11-OCT-2017 08:33 136560115 Signal Design Section Eastern Region\MSD\2016\2014\_Sig.M4\_Sld - Fabrication Detail - Mast Arm Poles.dgn