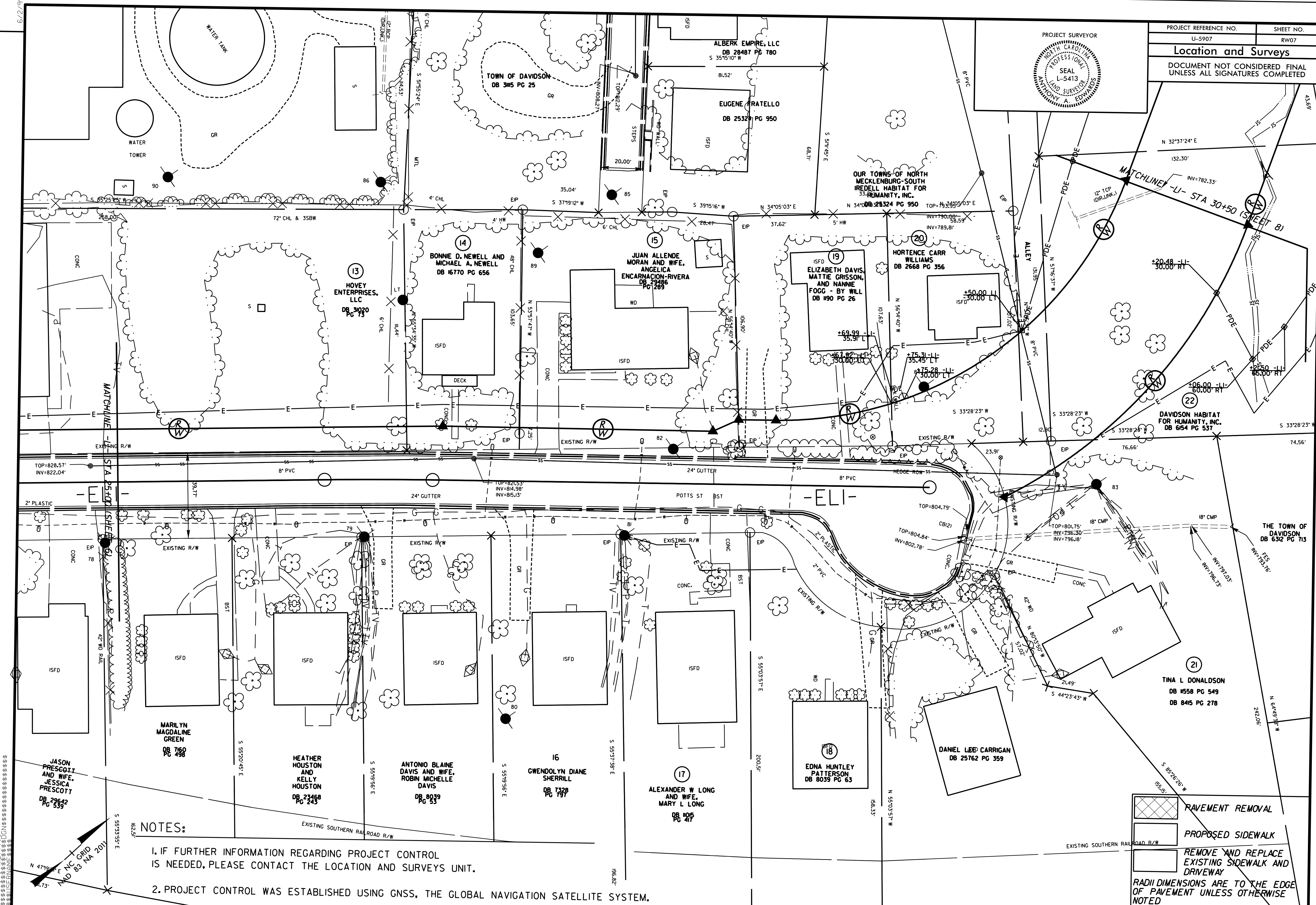
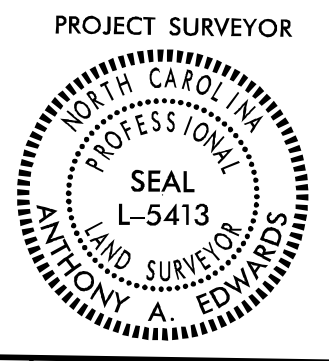


6/2/2017

PROJECT REFERENCE NO. U-5907	SHEET NO. RW07
Location and Surveys	
DOCUMENT NOT CONSIDERED FINAL UNLESS ALL SIGNATURES COMPLETED	



NOTES:

- IF FURTHER INFORMATION REGARDING PROJECT CONTROL IS NEEDED, PLEASE CONTACT THE LOCATION AND SURVEYS UNIT.
- PROJECT CONTROL WAS ESTABLISHED USING GNSS, THE GLOBAL NAVIGATION SATELLITE SYSTEM.

	RAVEMENT REMOVAL
	PROPOSED SIDEWALK
	REMOVE AND REPLACE EXISTING SIDEWALK AND DRIVEWAY

RADI DIMENSIONS ARE TO THE EDGE OF PAVEMENT UNLESS OTHERWISE NOTED

SEE SHEET 14 FOR -LI- PROFILE
SEE SHEET 17 FOR -DRW4- PROFILE

