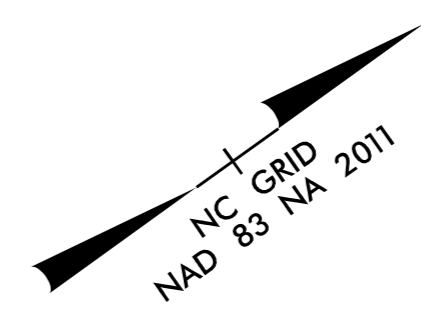


5/14/1999

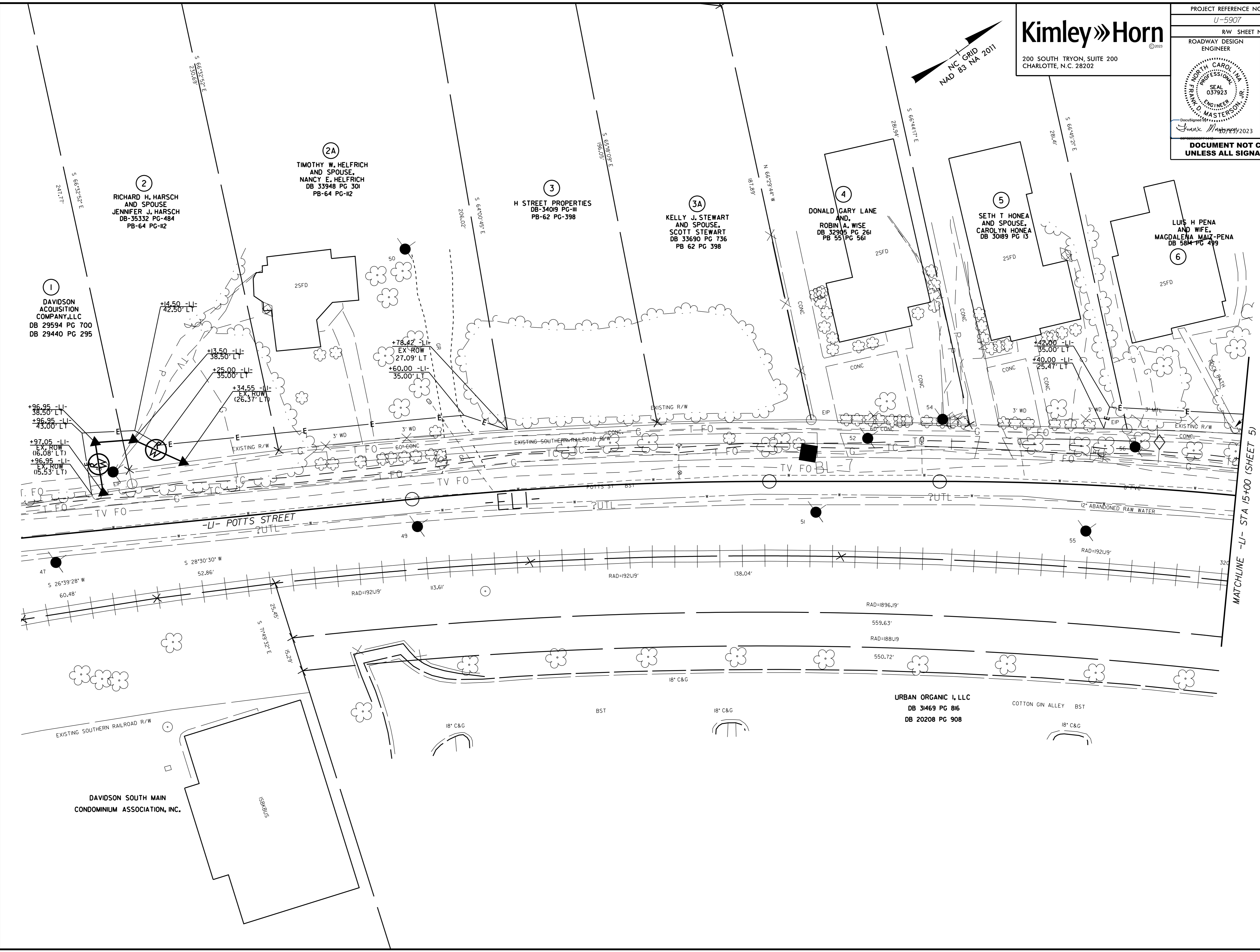
Kimley»Horn

200 SOUTH TRYON, SUITE 200
CHARLOTTE, N.C. 28202

PROJECT REFERENCE NO. U-5907	SHEET NO. 4A
ROADWAY DESIGN ENGINEER	HYDRAULICS ENGINEER
DOCUMENT NOT CONSIDERED FINAL UNLESS ALL SIGNATURES COMPLETED	



REVISIONS
 ROW REV. - 10/11/21 - UPDATED PARCELS 2,2A,3,3A,& 4 WITH UPDATED PROPERTY OWNERS



- ① DAVIDSON ACQUISITION COMPANY,LLC
DB 29594 PG 700
DB 29440 PG 295
- ② RICHARD H. HARSCH AND SPOUSE
JENNIFER J. HARSCH
DB-35332 PG-484
PB-64 PG-II2
- ②A TIMOTHY W. HELFRICH AND SPOUSE,
NANCY E. HELFRICH
DB 33948 PG 301
PB-64 PG-II2
- ③ H STREET PROPERTIES
DB-34019 PG-III
PB-62 PG-398
- ③A KELLY J. STEWART AND SPOUSE,
SCOTT STEWART
DB 33690 PG 736
PB 62 PG 398
- ④ DONALD GARY LANE AND
ROBIN A. WISE
DB 32905 PG 261
PB 55 PG 561
- ⑤ SETH T HONEA AND SPOUSE,
CAROLYN HONEA
DB 30189 PG 13
- ⑥ LUIS H PENA AND WIFE,
MACDALENA MAIZ-PENA
DB 584 PG 499

+96.95 -LI- 38.50' LT
+96.95 -LI- 43.00' LT
+97.05 -LI- 16.08' LT
+96.95 -LI- 15.53' LT

+14.50 -LI- 42.50' LT
+13.50 -LI- 38.50' LT
+25.00 -LI- 35.00' LT
+34.55 -LI- 26.37' LT

+78.42 -LI- 27.09' LT
+60.00 -LI- 35.00' LT

+42.00 -LI- 35.00' LT
+40.00 -LI- 25.47' LT

S 26°39'28" W 60.48'

S 28°30'30" W 52.86'

S 11°49'32" E 25.48'

RAD=1921.9'

113.61'

RAD=1921.9'

138.04'

RAD=1896.19'

559.63'

RAD=1881.19

550.72'

DAVIDSON SOUTH MAIN
CONDOMINIUM ASSOCIATION, INC.

URBAN ORGANIC I, LLC
DB 31469 PG 816
DB 20208 PG 908

COTTON GIN ALLEY

8/28/2023

MATCHLINE -LI- STA 15+00 (SHEET 5)