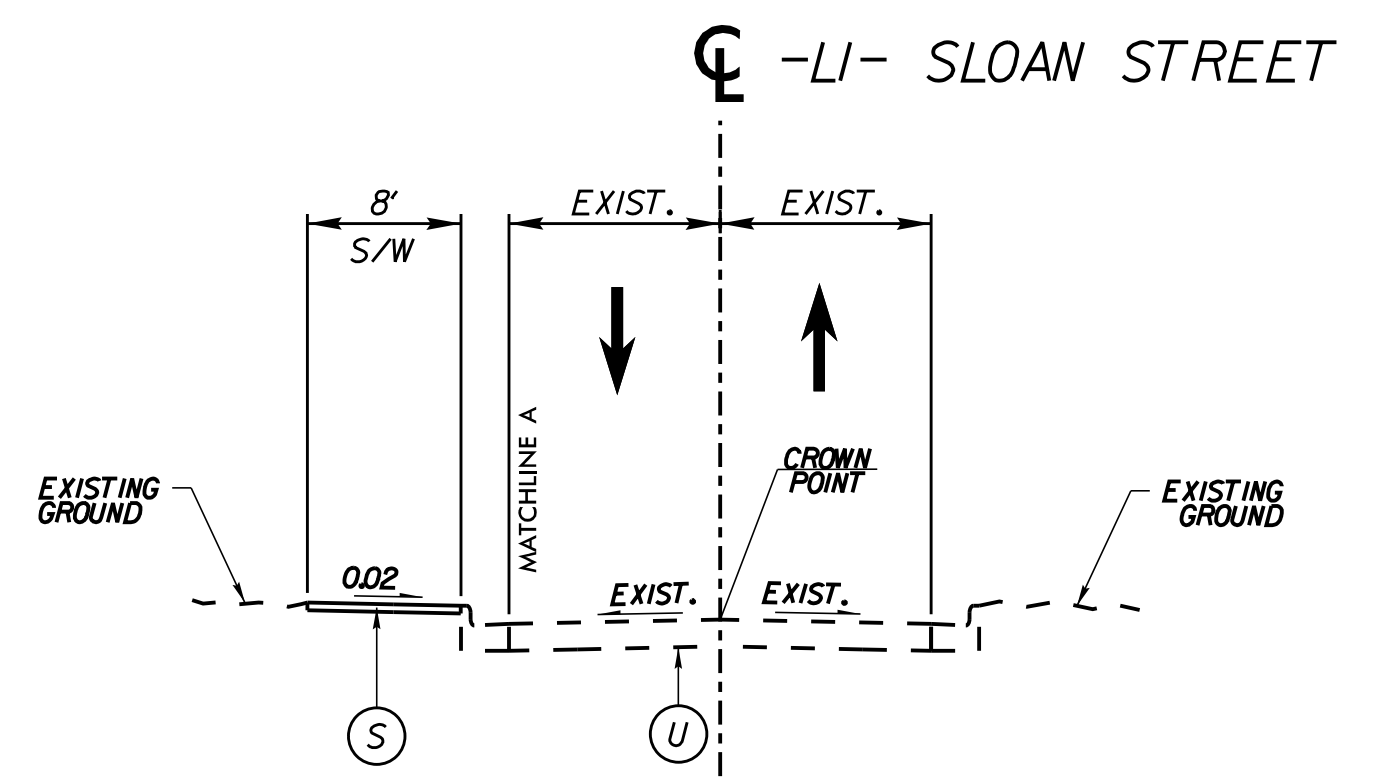
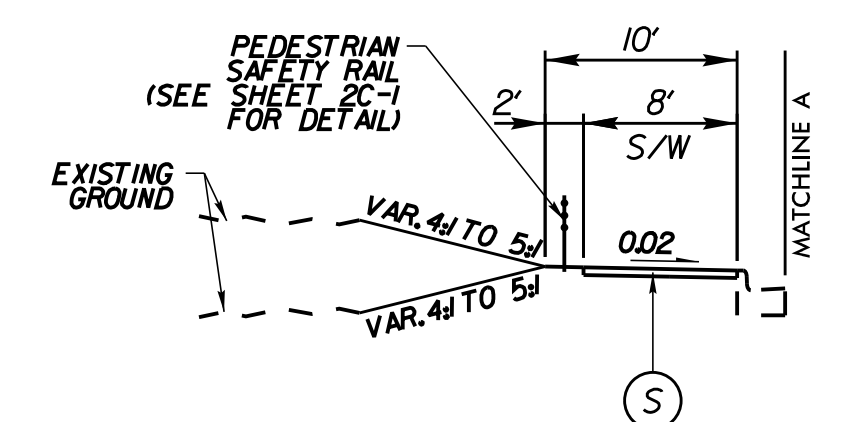


PROJECT REFERENCE NO. U-5907	SHEET NO. 2A-3
ROADWAY DESIGN ENGINEER SEAL 037923 FRANK WASHINGTON	PAVEMENT DESIGN ENGINEER SEAL 034357 MICHAEL EBERSON
10/26/2023	10/26/2023

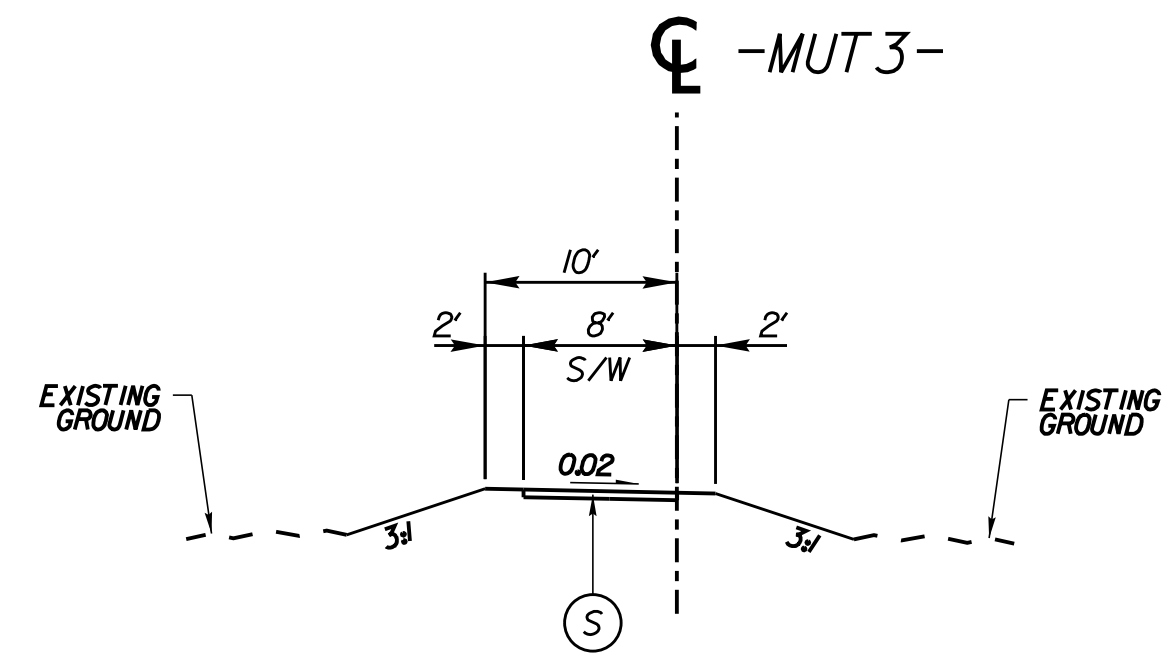
**DOCUMENT NOT CONSIDERED FINAL UNLESS ALL SIGNATURES COMPLETED**



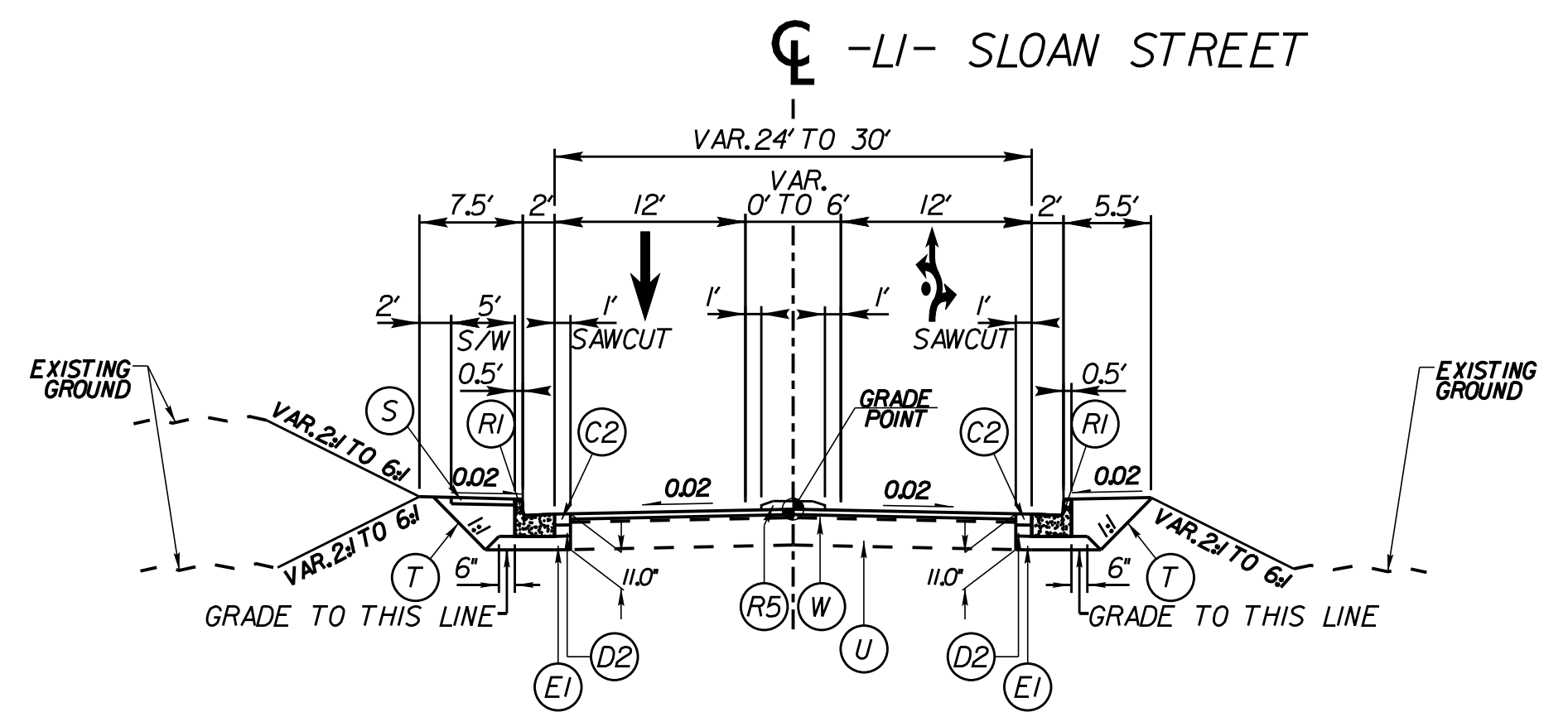
**TYPICAL SECTION NO. 6**  
-LI- STA 33+33.19 TO STA 38+09.04



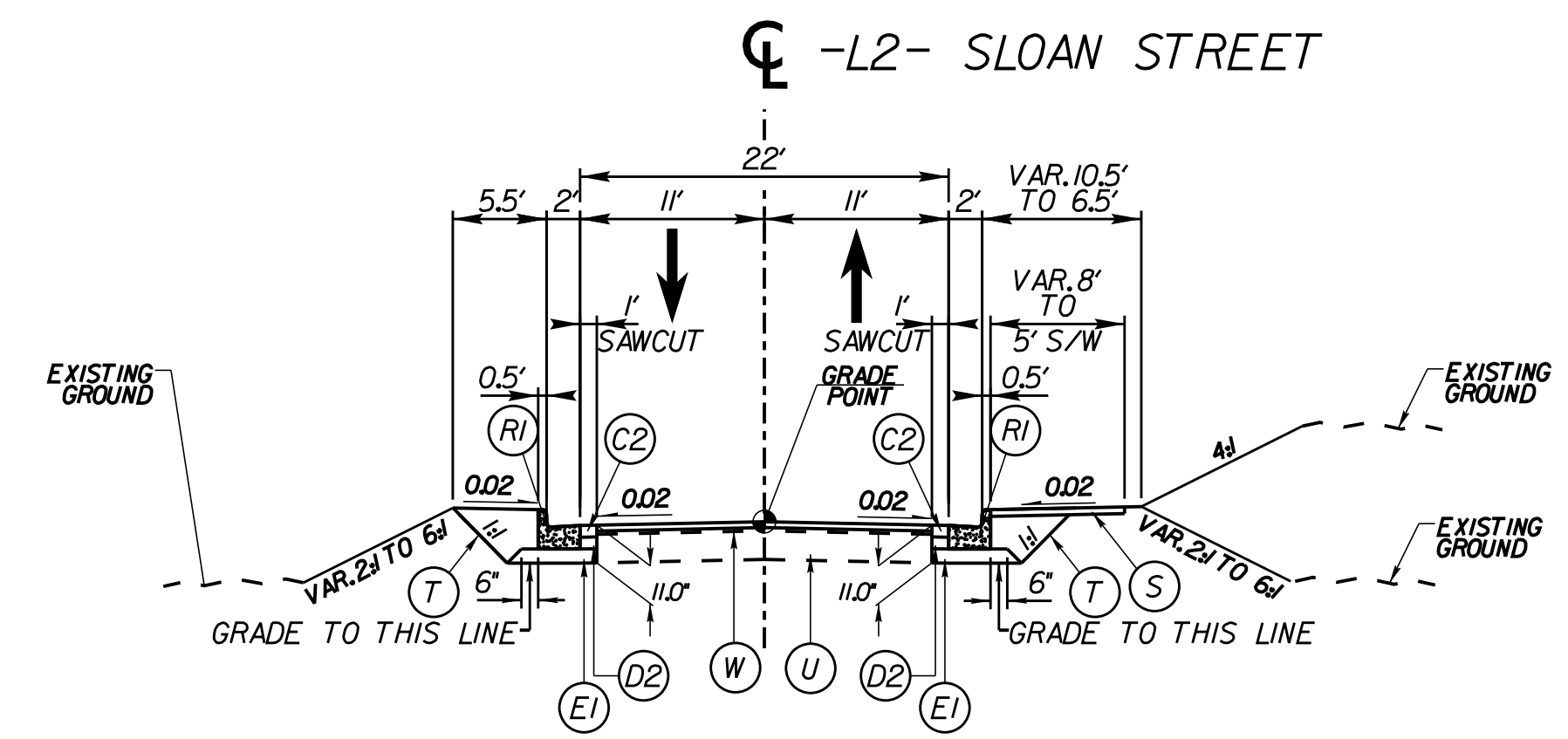
**TYPICAL SECTION NO. 6A**  
-LI- STA 34+83.19 TO STA 35+80.00  
-LI- STA 37+30.00 TO STA 38+05.00



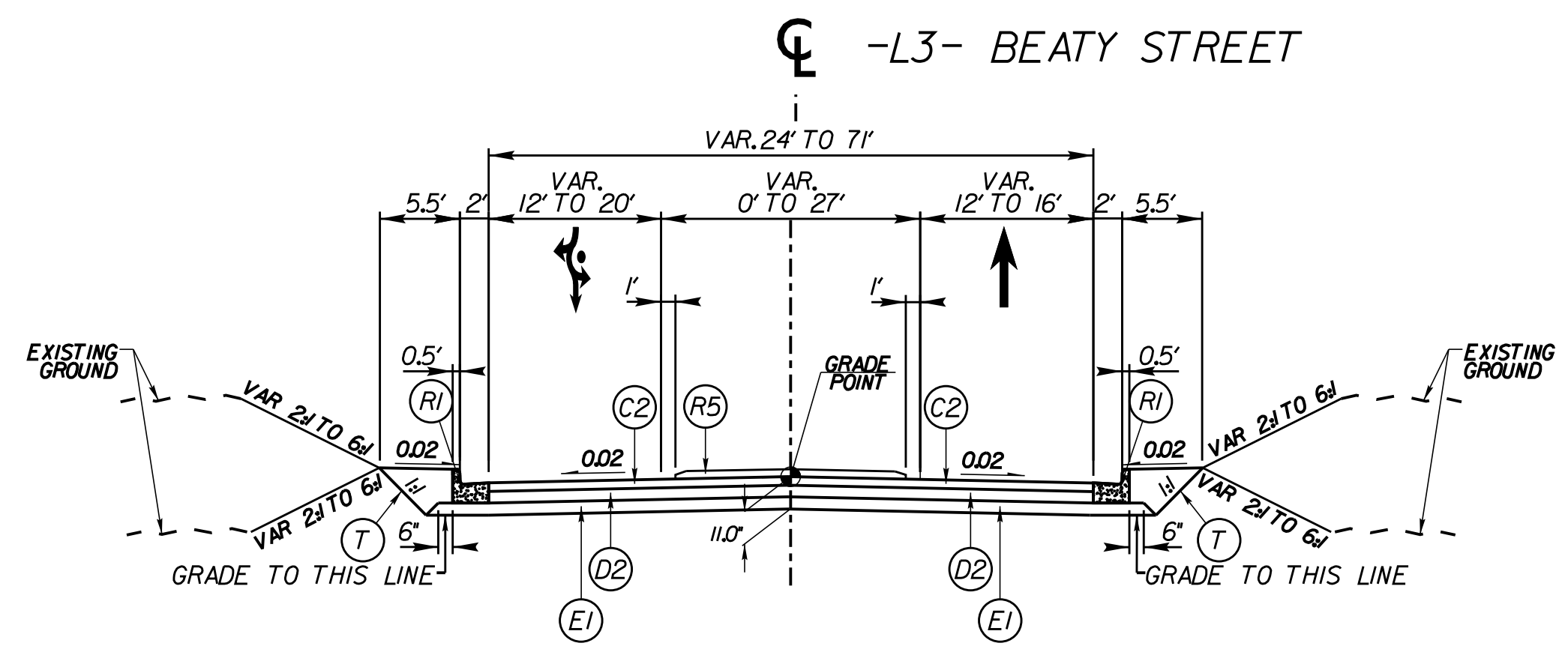
**TYPICAL SECTION NO. 7**  
-MUT 3- STA 14+75.85 TO STA 16+52.22



**TYPICAL SECTION NO. 8**  
-LI- STA 41+80.80 TO STA 43+12.66



**TYPICAL SECTION NO. 9**  
-L2- STA 10+11.50 TO STA 10+96.84



**TYPICAL SECTION NO. 10**  
-L3- STA 10+60.14 TO STA 11+45.54

PAVEMENT SCHEDULE (FINAL PAVEMENT DESIGN)	
A1	12" TRUCK MOUNTABLE CONCRETE APRON (CLASS AA)
A2	12" TRUCK MOUNTABLE CONCRETE APRON, W/ BLACK TINT (CLASS AA)
A3	PROPOSED 6" PORTLAND CEMENT CONCRETE PAVEMENT, CLASS B
C1	15" S9.5B
C2	30" S9.5B
C3	VAR. DEPTH S9.5B
D1	2.5" 119.0C
D2	4" 119.0C
D3	VAR. DEPTH 119.0C
E1	40" B25.0C
E2	50" B25.0C
E3	VAR. DEPTH B25.0C
R1	2'-6" CONCRETE CURB & GUTTER
R2	1'-6" CONCRETE CURB & GUTTER
R3	8" x 12" CURB
R4	8" x 18" CURB
R5	5' MONO-ISLAND (KEYED-IN)
S	4" CONCRETE SIDEWALK
T	EARTH MATERIAL
U	EXISTING PAVEMENT
V1	INCIDENTAL MILLING
V2	PROPOSED 15" MILLING
W	WEDGING

NOTES:  
1. PAVEMENT EDGE SLOPES ARE 1:1 UNLESS OTHERWISE INDICATED  
2. REFER TO PLAN SHEETS FOR VARIABLE WIDTHS  
3. SAWCUT AND REMOVE EXISTING ASPHALT PAVEMENT TO PROVIDE 1" MIN FULL DEPTH ASPHALT PAVEMENT  
4. UTILIZE WELDED WIRE MESH (6x6 W5xW5) IN ALL PROPOSED 12" TRUCK MOUNTABLE APRONS