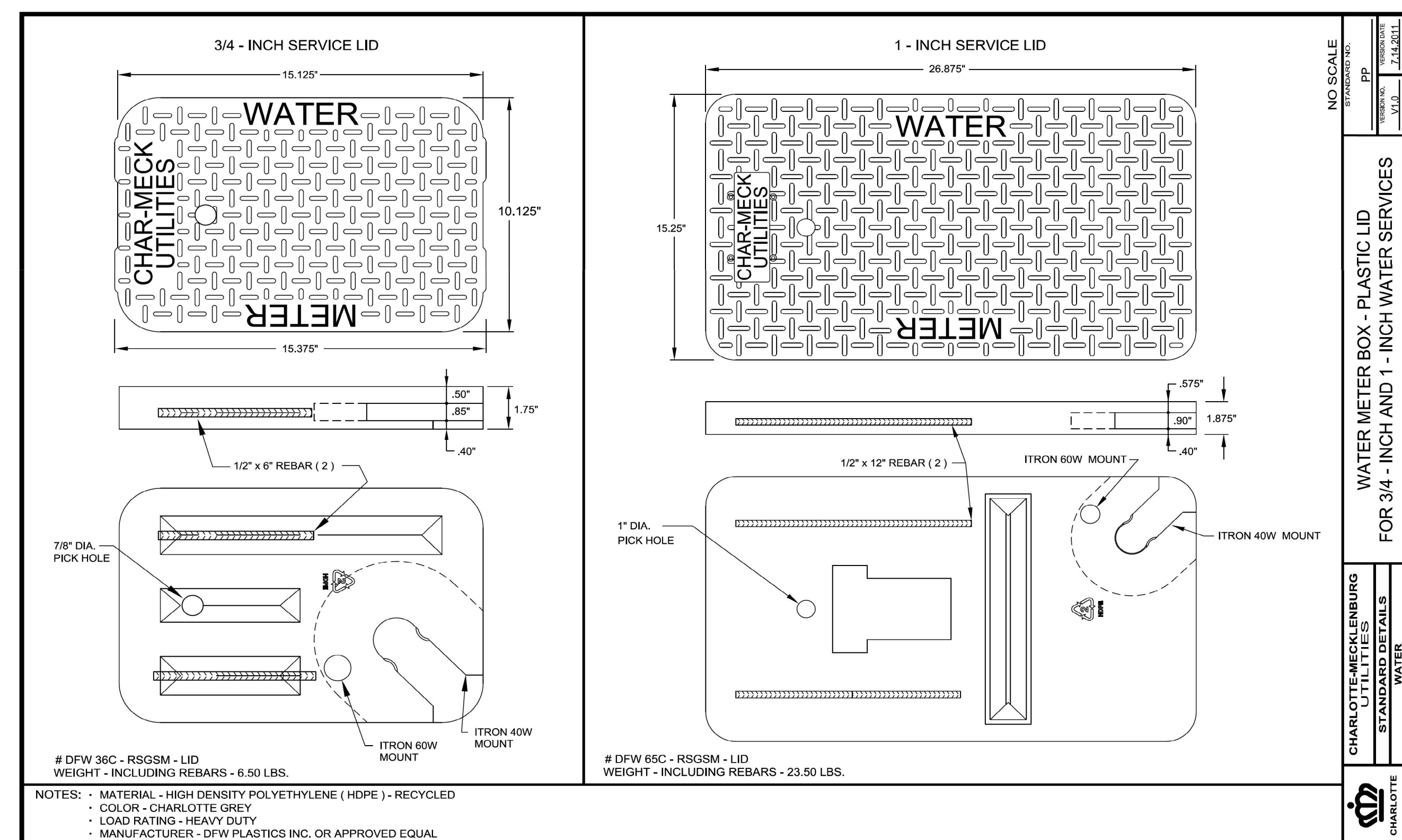


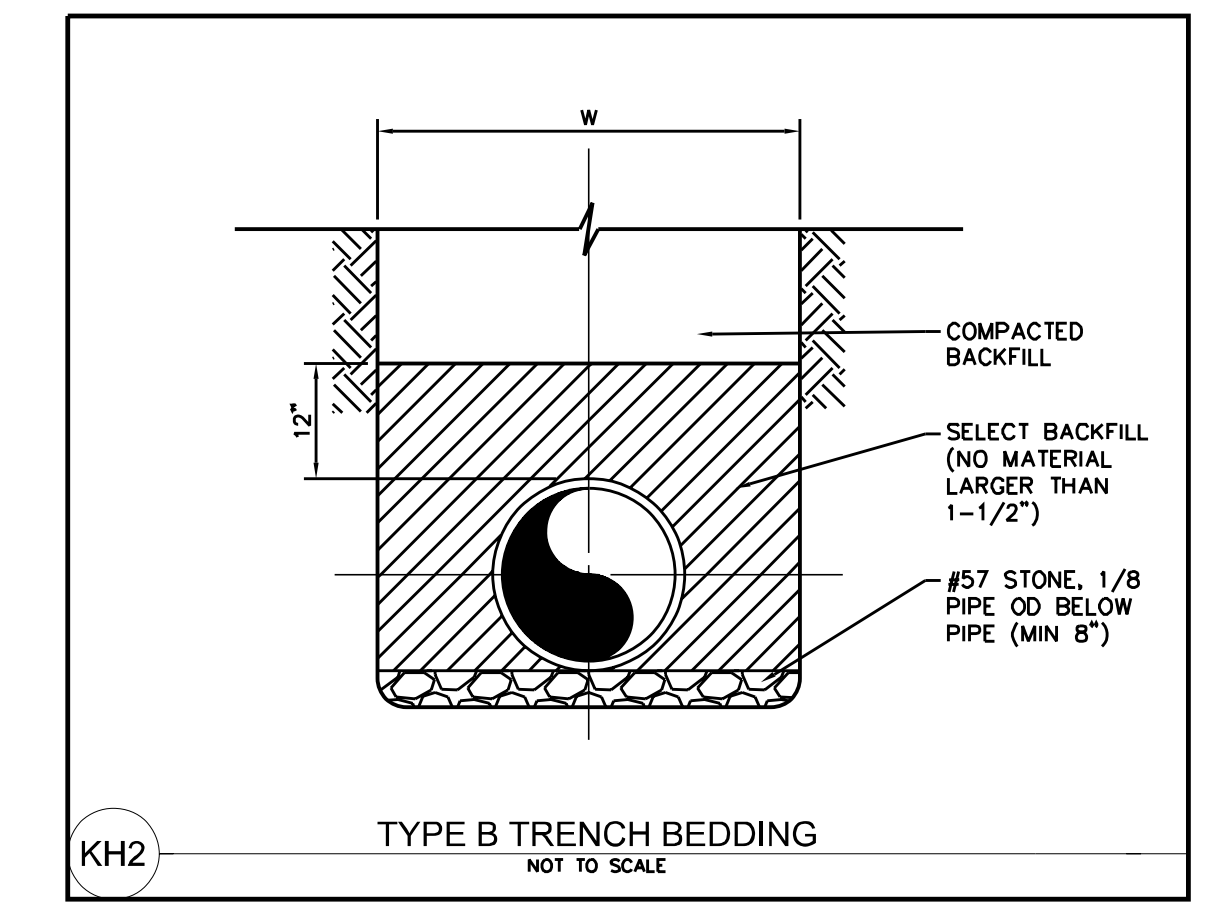
UTILITY CONSTRUCTION



# DFW 36C - RSGSM - LID  
 WEIGHT - INCLUDING REBARs - 6.50 LBS.  
 NOTES: MATERIAL - HIGH DENSITY POLYETHYLENE (HDPE) - RECYCLED  
 COLOR - CHARLOTTE GREY  
 LOAD RATING - HEAVY DUTY  
 MANUFACTURER - DFW PLASTICS INC. OR APPROVED EQUAL

# DFW 65C - RSGSM - LID  
 WEIGHT - INCLUDING REBARs - 23.50 LBS.  
 NOTES: MATERIAL - HIGH DENSITY POLYETHYLENE (HDPE) - RECYCLED  
 COLOR - CHARLOTTE GREY  
 LOAD RATING - HEAVY DUTY  
 MANUFACTURER - DFW PLASTICS INC. OR APPROVED EQUAL

NO SCALE  
 WATER METER BOX - PLASTIC LID  
 FOR 3/4- INCH AND 1- INCH WATER SERVICES  
 CHARLOTTE-MECKLENBURG UTILITIES  
 STANDARD DETAILS  
 WATER

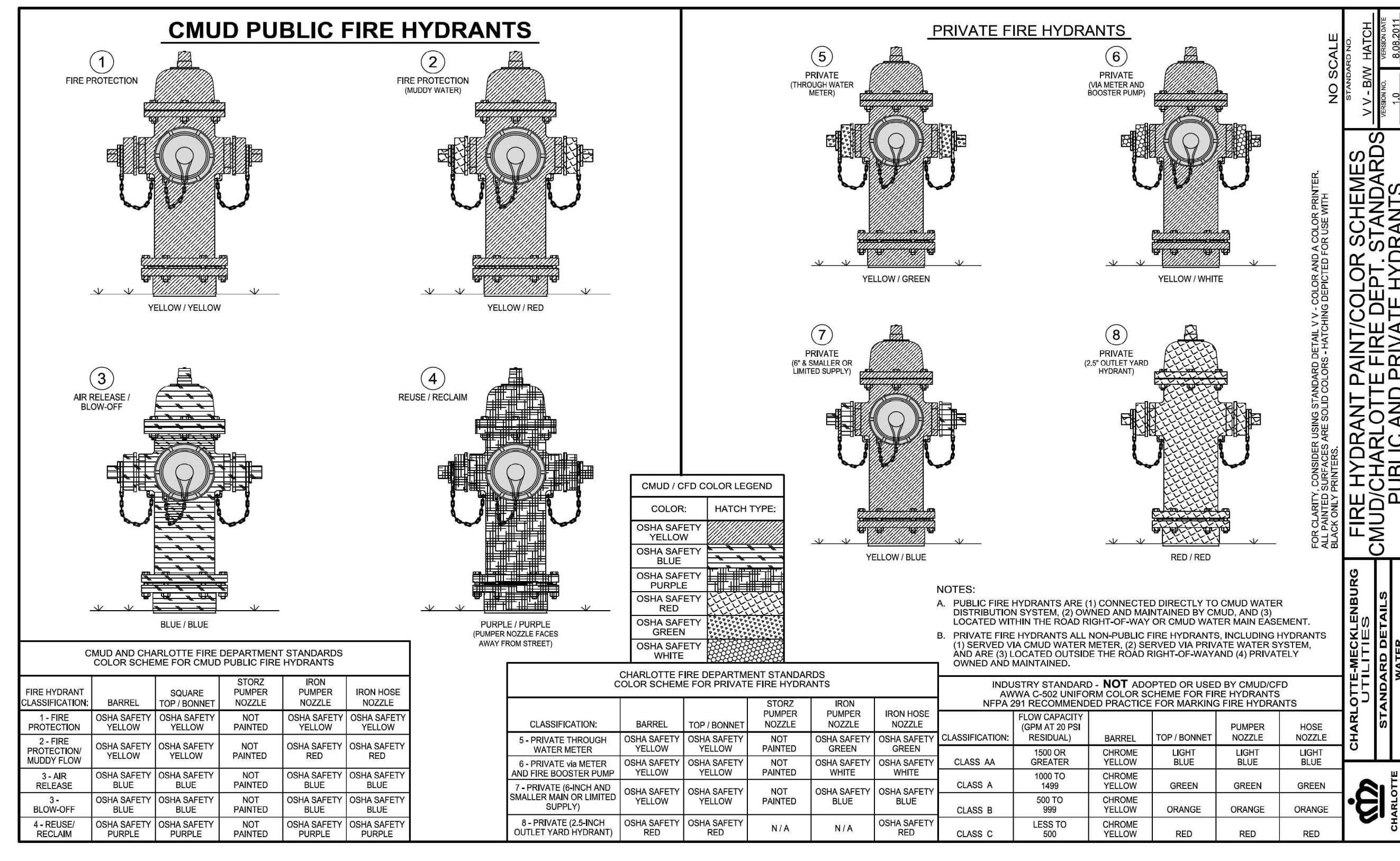


KH2 TYPE B TRENCH BEDDING  
 NOT TO SCALE

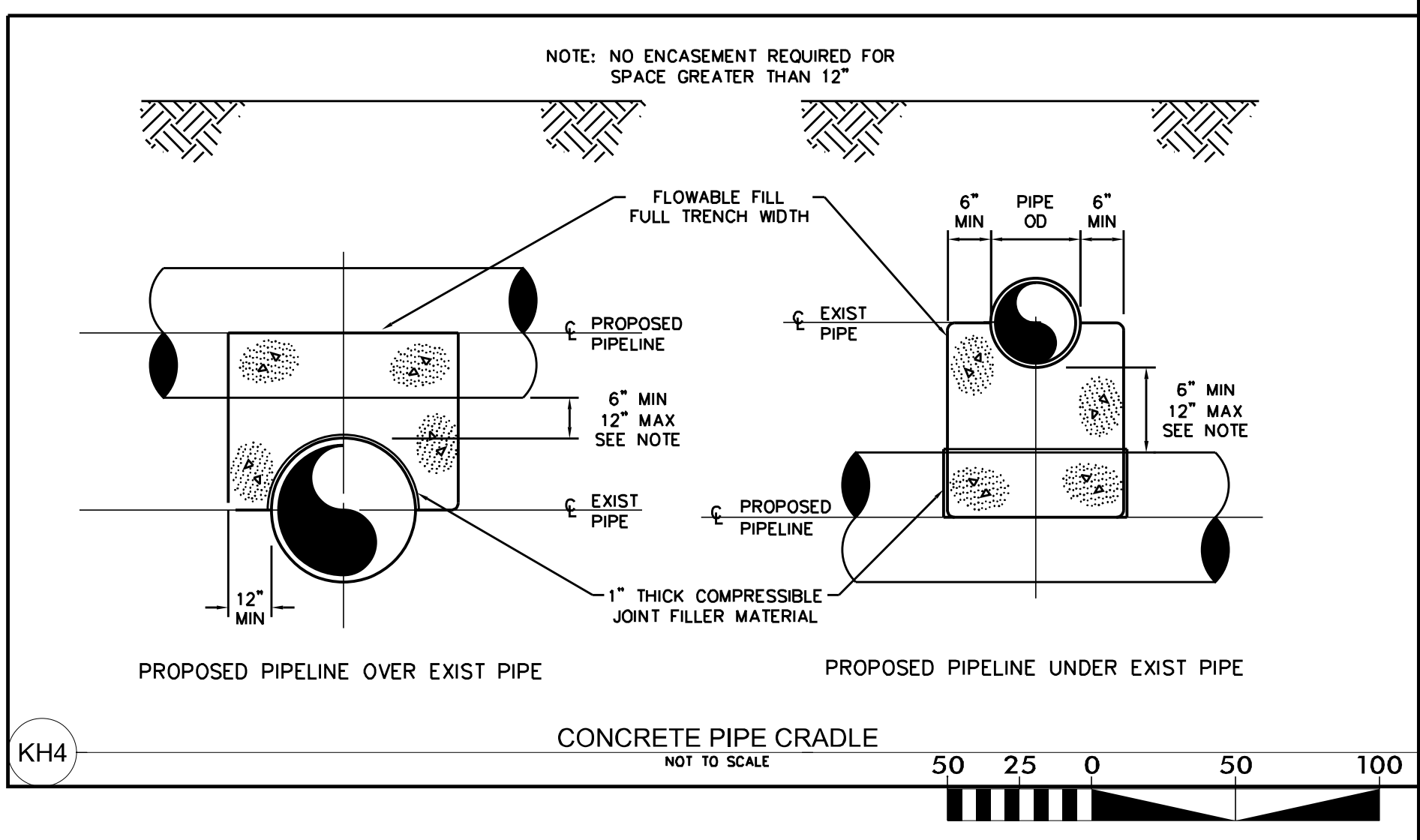
TRENCH EXCAVATION LIMITS		
INTERNAL DIAMETER OF PIPE	WIDTH OF TRENCH	
	MAX	W-MIN
4'-0"	3'-9"	2'-0"
8'-10"	3'-9"	2'-2"
12"	3'-9"	O.D.+2"
14'-16"	4'-2"	O.D.+2"
18"	4'-4"	O.D.+2"
20'-21"	4'-8"	O.D.+2"
24"	4'-11"	O.D.+2"
27"	5'-9"	O.D.+2"
30"	6'-7"	O.D.+2"
36"	7'-4"	O.D.+2"
42"	8'-2"	O.D.+2"
48"	8'-9"	O.D.+2"
54"	9'-4"	O.D.+2"
60"	9'-10"	O.D.+2"
72"	11'-0"	O.D.+2"
78"	11'-8"	O.D.+2"
84"	12'-0"	O.D.+2"
90"	12'-6"	O.D.+2"
96"	13'-0"	O.D.+2"
108"	14'-0"	O.D.+2"
DEPTH OF CUT	S MAXIMUM PAVEMENT REPLACEMENT WIDTH	
0'-6"	S=W+4	
>6-8"	S=W+8	
>8-10"	S=W+12	
>10-12"	S=W+16	
>12-14"	S=W+20	
>14-16"	S=W+24	
>16-18"	S=W+28	
>18"	S=W+32	

W = TRENCH WIDTH AT BOTTOM OF PIPE. TRENCH SIDE SLOPES SHALL BE IN ACCORDANCE WITH OSHA REQUIREMENTS.

KH3 TRENCH EXCAVATION LIMITS



NO SCALE  
 FIRE HYDRANT PAINT/COLOR SCHEMES  
 CMUD/CHARLOTTE FIRE DEPT. STANDARDS  
 PUBLIC AND PRIVATE HYDRANTS  
 CHARLOTTE-MECKLENBURG UTILITIES  
 STANDARD DETAILS  
 WATER



KH4 CONCRETE PIPE CRADLE  
 NOT TO SCALE

5/14/23