

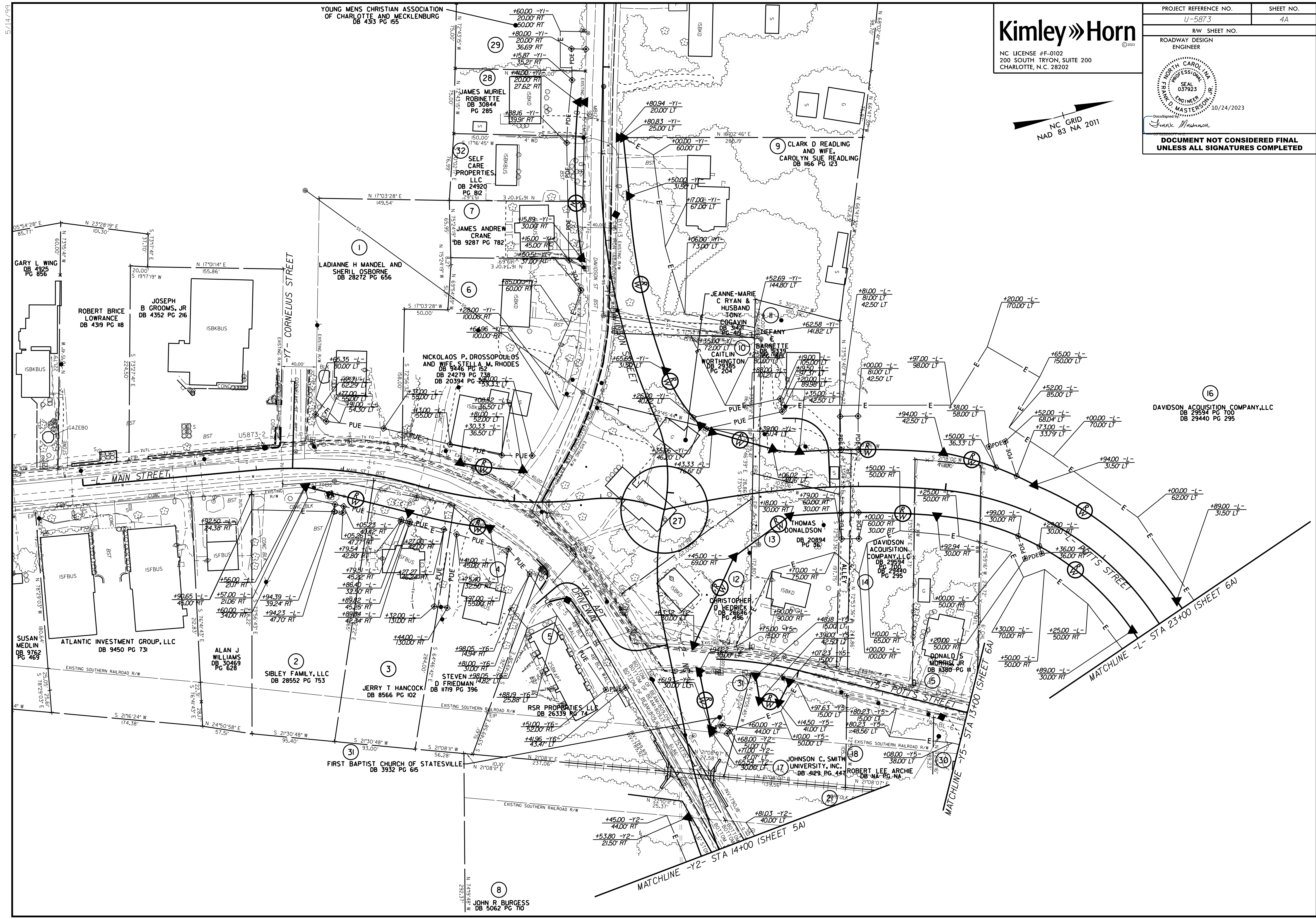
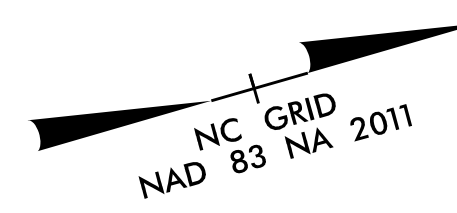
5/14/23

YOUNG MENS CHRISTIAN ASSOCIATION
OF CHARLOTTE AND MECKLENBURG
DB 4313 PG 155

Kimley»Horn

NC LICENSE #F-0102
200 SOUTH TRYON, SUITE 200
CHARLOTTE, N.C. 28202

PROJECT REFERENCE NO.	SHEET NO.
U-5873	4A
RW SHEET NO.	
ROADWAY DESIGN ENGINEER	
10/24/2023	
<i>Frank Mashanon</i> DOCUMENT NOT CONSIDERED FINAL UNLESS ALL SIGNATURES COMPLETED	



GARY L WING
DB 4925
PG 856

ROBERT BRICE
LOWRANCE
DB 4319 PG 118

JOSEPH
B GROOMS, JR
DB 4352 PG 216

LADIANNE H MANDEL AND
SHERIL OSBORNE
DB 28272 PG 656

JAMES ANDREW
CRANE
DB 9287 PG 782

NICKOLAOS P. DROSSOPOULOS
AND WIFE STELLA M. RHODES
DB 24279 PG 738
DB 20394 PG 230

JEANNE-MARIE
C RYAN &
HUSBAND
TONY
EGGAVIN
DB 3122
PG 418

BARRIETTE
DB 3133
PG 418

THOMAS
DONALDSON
DB 20894
PG 36

DAVIDSON
ACQUISITION
COMPANY, LLC
DB 29594
PG 100
DB 29440
PG 295

CHRISTOPHER
D HEDRICK
DB 2886
PG 486

DAVIDSON
ACQUISITION
COMPANY, LLC
DB 29594
PG 100
DB 29440
PG 295

DAVIDSON
ACQUISITION
COMPANY, LLC
DB 29594
PG 100
DB 29440
PG 295

DONALD S
MORRIS JR
DB 1380
PG 11

JOHNSON C. SMITH
UNIVERSITY, INC.
DB 4123 PG 441

ROBERT LEE ARCHIE
DB NA PG NA

SUSAN
MEDLIN
DB 9762
PG 469

ATLANTIC INVESTMENT GROUP, LLC
DB 9450 PG 731

ALAN J
WILLIAMS
DB 30469
PG 628

SIBLEY FAMILY, LLC
DB 28552 PG 753

JERRY T HANCOCK
DB 8566 PG 102

STEVEN
D FRIEDMAN
DB 1719 PG 396

RSR PROPERTIES, LLC
DB 26339 PG 74

FIRST BAPTIST CHURCH OF STATESVILLE
DB 3932 PG 615

JOHN R BURGESS
DB 5062 PG 710

DAVIDSON ACQUISITION COMPANY, LLC
DB 29594 PG 100
DB 29440 PG 295

MATCHLINE -L- STA 23+00 (SHEET 6A)

MATCHLINE -Y2- STA 14+00 (SHEET 5A)