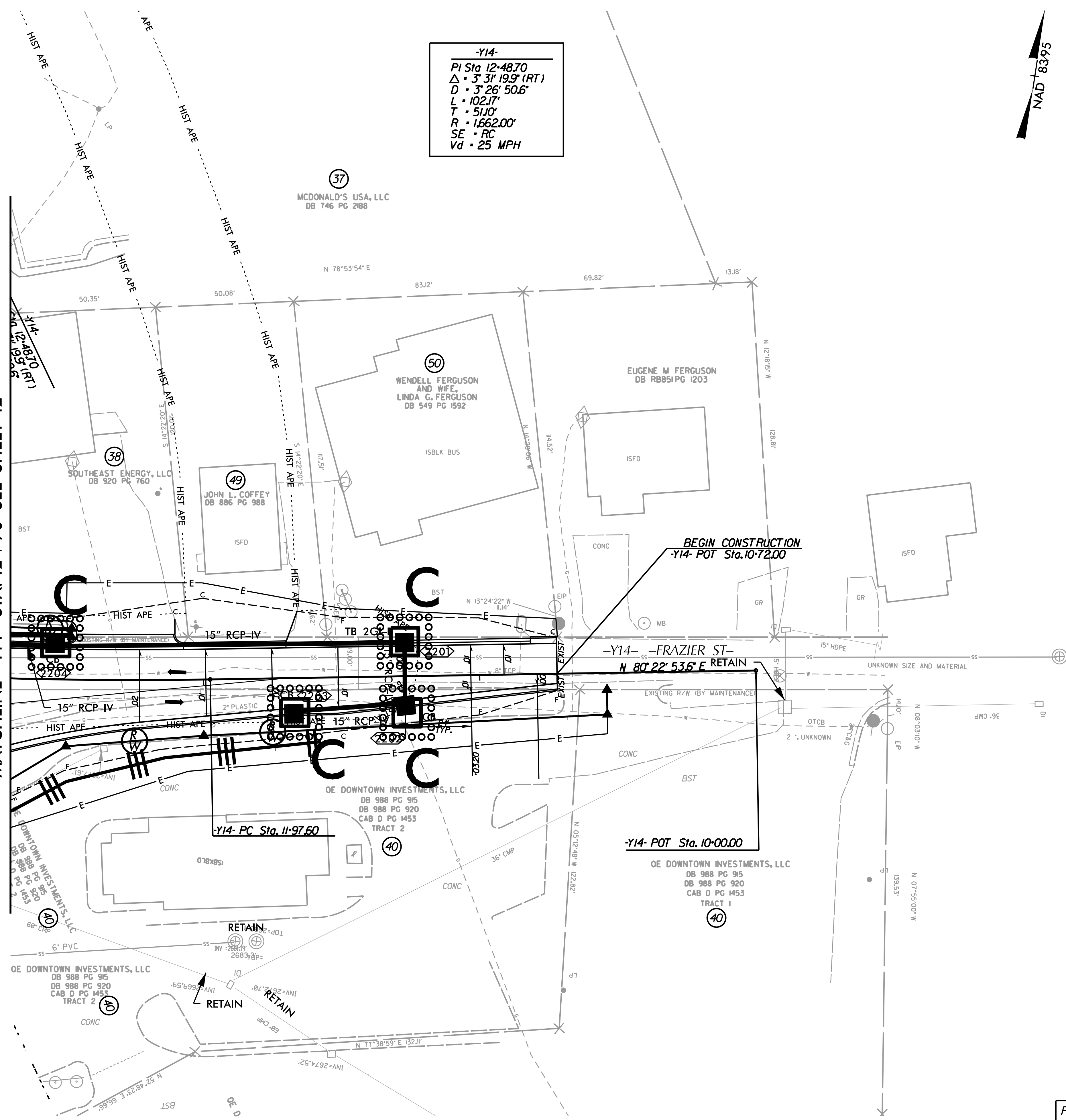


NOTE: UTILIZE FABRIC INSERT INLET DEVICES IN LIEU OF ROCK INLET SEDIMENT TRAPS, TYPE-C AS DIRECTED TO AVOID IMPOUNDMENT OF RUNOFF IN ROADWAY OPEN TO TRAFFIC.



**-Y14-**  
 PI Sta 12+48.70  
 $\Delta = 3' 31" 19.9" (RT)$   
 $D = 3' 26' 50.6"$   
 $L = 102.17'$   
 $T = 51.10'$   
 $R = 1.662.00'$   
 $SE = RC$   
 $Vd = 25 MPH$

MATCHLINE -Y14- STA. 12 + 70 SEE SHEET 12



FOR -Y14- PROFILE SEE SHT.29

3/10/2023 R:\Environmental\Design\U5839-EC-43-F.incl.dgn 8/17/99