

-L-	-L-	-Y15-
PI Sta 59+24.91	PI Sta 65+53.32	PI Sta 11+58.16
Δ · 4' 37" 18.8' (RT)	Δ · 3' 06" 29.0' (RT)	Δ · 4' 46" 28.0' (LT)
D · 1' 07" 45.1'	D · 4' 01" 04.6"	D · 7' 58" 47.7"
L · 409.31'	L · 824.01'	L · 59.83'
T · 204.76'	T · 423.86'	T · 29.93'
R · 5,074.00'	R · 1,426.00'	R · 718.00'
SE · NC	SE · 05	SE · EXIST
Vd · 40 MPH	Vd · 40 MPH	Vd · 25 MPH

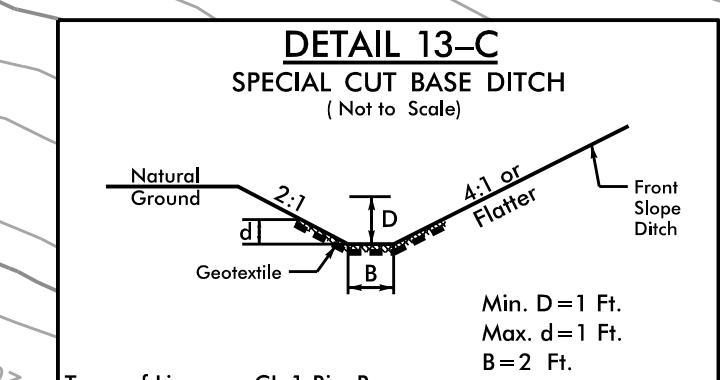
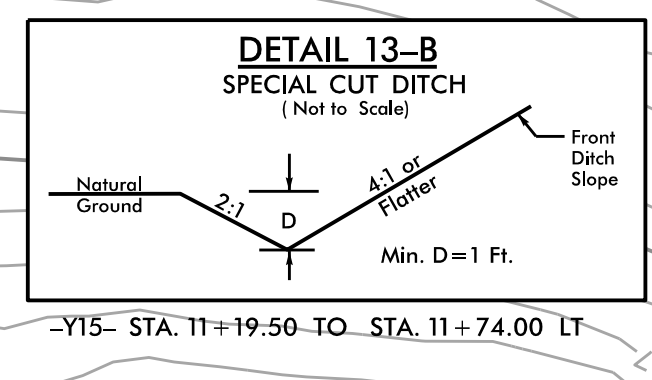
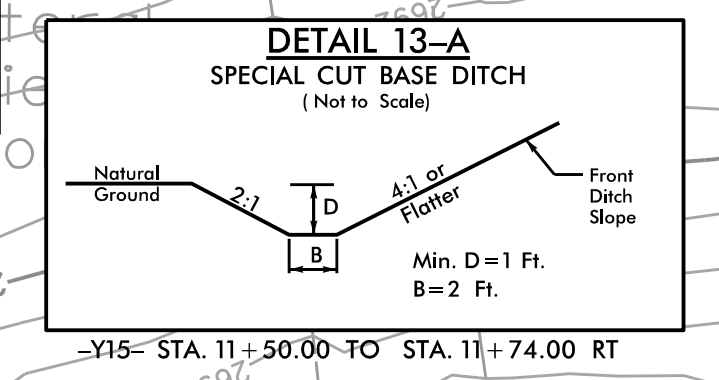
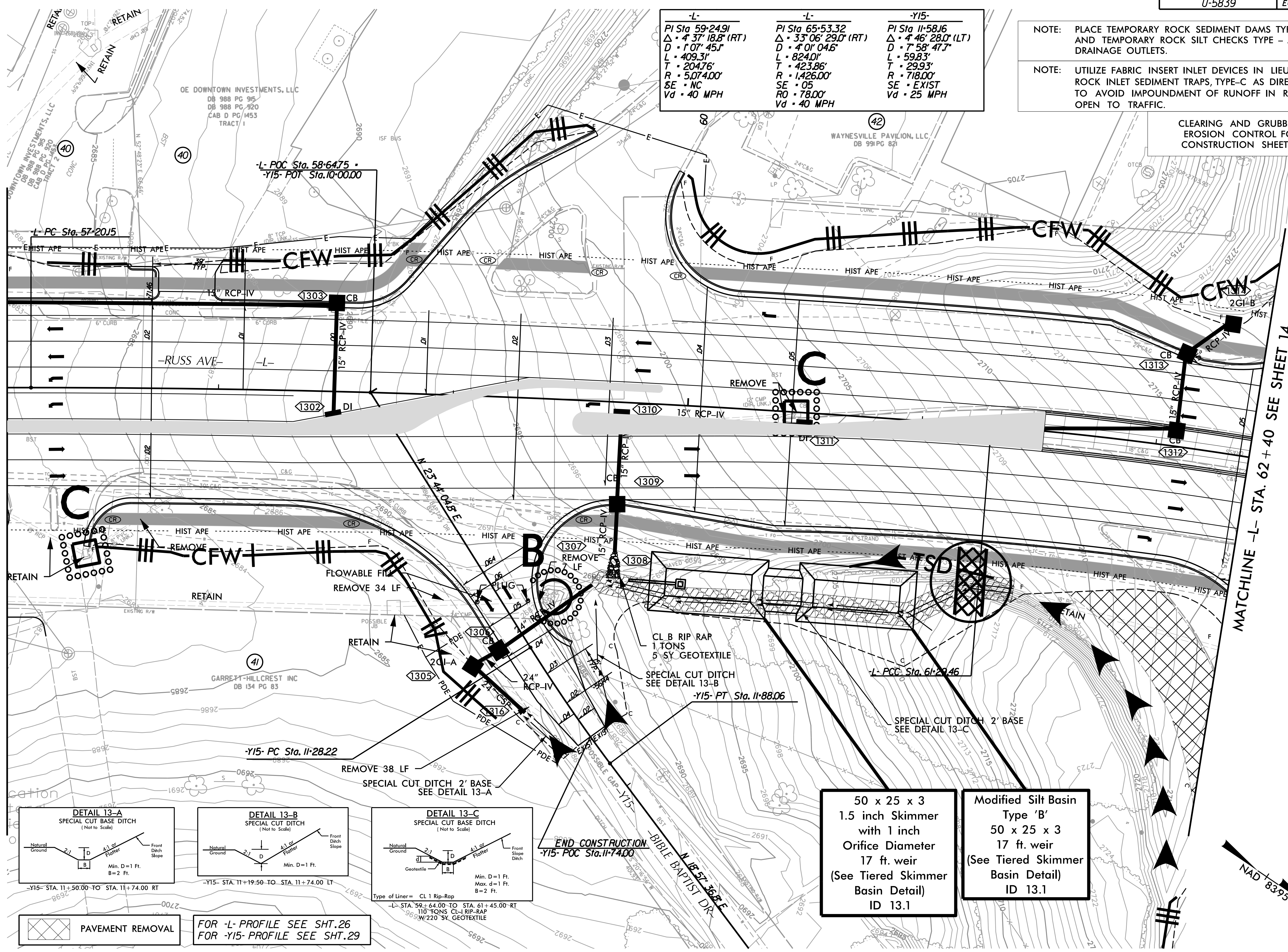
NOTE: PLACE TEMPORARY ROCK SEDIMENT DAMS TYPE - B AND TEMPORARY ROCK SILT CHECKS TYPE - A AT DRAINAGE OUTLETS.

NOTE: UTILIZE FABRIC INSERT INLET DEVICES IN LIEU OF ROCK INLET SEDIMENT TRAPS, TYPE-C AS DIRECTED TO AVOID IMPOUNDMENT OF RUNOFF IN ROADWAY OPEN TO TRAFFIC.

CLEARING AND GRUBBING EROSION CONTROL FOR CONSTRUCTION SHEET 13

MATCHLINE -L- STA. 57+10 SEE SHEET 12

MATCHLINE -L- STA. 62+40 SEE SHEET 14



50 x 25 x 3  
1.5 inch Skimmer  
with 1 inch  
Orifice Diameter  
17 ft. weir  
(See Tiered Skimmer  
Basin Detail)  
ID 13.1

Modified Silt Basin  
Type 'B'  
50 x 25 x 3  
17 ft. weir  
(See Tiered Skimmer  
Basin Detail)  
ID 13.1

PAVEMENT REMOVAL

FOR -L- PROFILE SEE SHT.26  
FOR -Y15- PROFILE SEE SHT.29

END CONSTRUCTION  
-Y15- POC Sta. 11+74.00



REVISIONS

3/10/2023 R:\Environmental\Design\U5839\_EC\_13\_C&G.dgn 8/17/99