

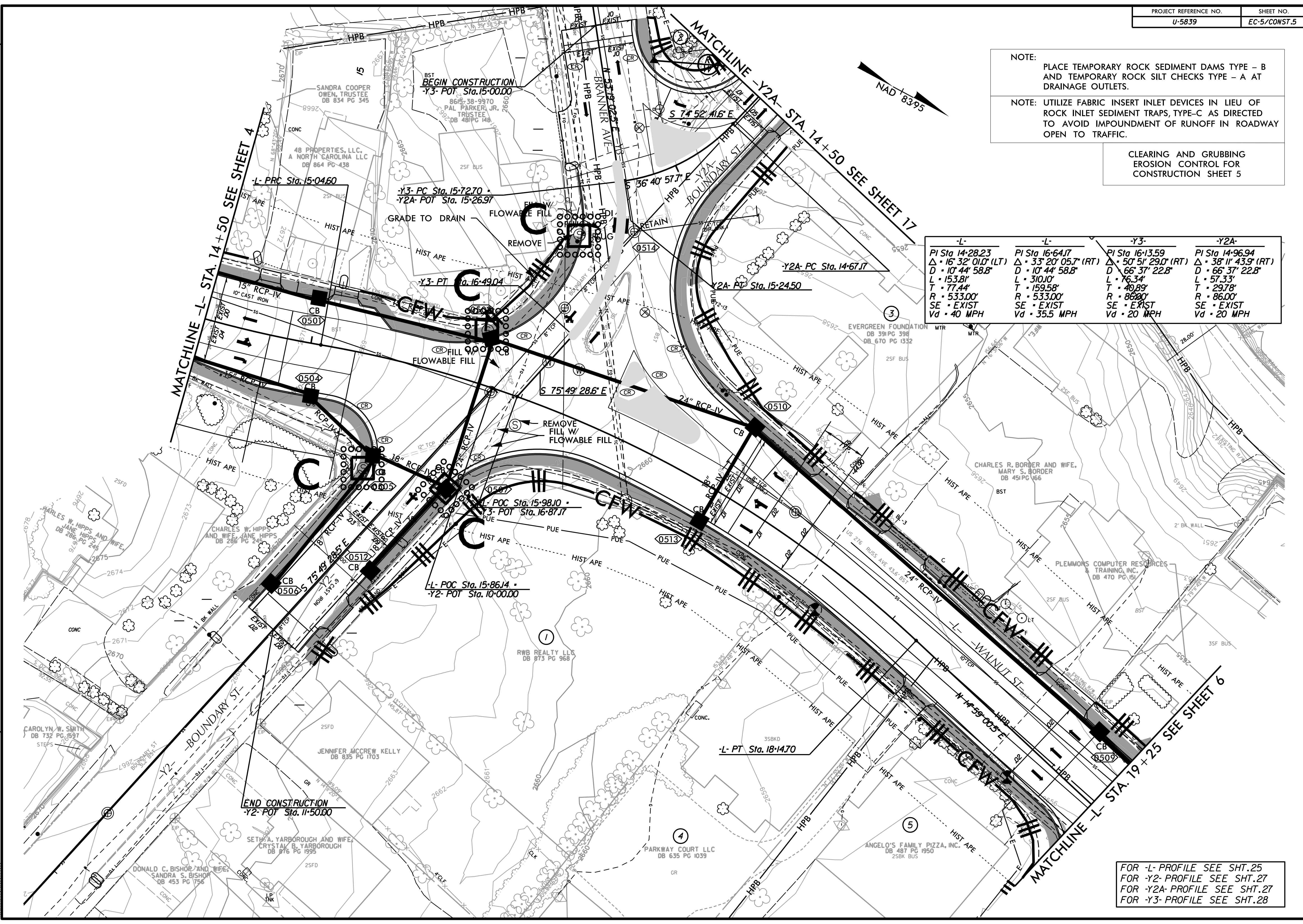
NOTE: PLACE TEMPORARY ROCK SEDIMENT DAMS TYPE - B AND TEMPORARY ROCK SILT CHECKS TYPE - A AT DRAINAGE OUTLETS.

NOTE: UTILIZE FABRIC INSERT INLET DEVICES IN LIEU OF ROCK INLET SEDIMENT TRAPS, TYPE-C AS DIRECTED TO AVOID IMPOUNDMENT OF RUNOFF IN ROADWAY OPEN TO TRAFFIC.

CLEARING AND GRUBBING EROSION CONTROL FOR CONSTRUCTION SHEET 5

-L-	-L-	-Y3-	-Y2A-
PI Sta 14+28.23	PI Sta 16+64.7	PI Sta 16+13.59	PI Sta 14+96.94
$\Delta \cdot 16^{\circ} 32' 01.0" (LT)$	$\Delta \cdot 33^{\circ} 20' 05.7" (RT)$	$\Delta \cdot 50^{\circ} 51' 29.0" (RT)$	$\Delta \cdot 38^{\circ} 11' 43.9" (RT)$
D $\cdot 10^{\circ} 44' 58.8"$	D $\cdot 10^{\circ} 44' 58.8"$	D $\cdot 66^{\circ} 37' 22.8"$	D $\cdot 66^{\circ} 37' 22.8"$
L $\cdot 153.81'$	L $\cdot 310.10'$	L $\cdot 76.34'$	L $\cdot 57.33'$
T $\cdot 77.44'$	T $\cdot 159.58'$	T $\cdot 40.89'$	T $\cdot 29.78'$
R $\cdot 533.00'$	R $\cdot 533.00'$	R $\cdot 86.00'$	R $\cdot 86.00'$
SE $\cdot EXIST$	SE $\cdot EXIST$	SE $\cdot EXIST$	SE $\cdot EXIST$
Vd $\cdot 40 MPH$	Vd $\cdot 35.5 MPH$	Vd $\cdot 20 MPH$	Vd $\cdot 20 MPH$

REVISIONS
 3/10/2023 R:\Environmental\Design\U5839-EC-05-C&G.dgn
 8/17/99



FOR -L- PROFILE SEE SHT.25
 FOR -Y2- PROFILE SEE SHT.27
 FOR -Y2A- PROFILE SEE SHT.27
 FOR -Y3- PROFILE SEE SHT.28