

STATE OF NORTH CAROLINA
DEPARTMENT OF TRANSPORTATION

PAVEMENT MARKING PLAN
HAYWOOD COUNTY

LOCATION: B-3186, BRIDGES 430155 AND 430158 OVER RICHLAND CREEK ON US 23/74
B-5898, BRIDGE 430168 OVER US 19/23 ON US 23/74

INDEX

SHEET NO.	DESCRIPTION
PMP - 1	PAVEMENT MARKING PLAN TITLE AND SCHEDULE SHEET
PMP - 2 THRU PMP - 5	PAVEMENT MARKING PLANS

ROADWAY STANDARD DRAWING

THE FOLLOWING ROADWAY STANDARDS AS APPEAR IN "ROADWAY STANDARD DRAWINGS" - PROJECT SERVICES UNIT - N.C. DEPARTMENT OF TRANSPORTATION - RALEIGH, N.C., DATED JANUARY 2018 ARE APPLICABLE TO THIS PROJECT AND BY REFERENCE HEREBY ARE CONSIDERED A PART OF THESE PLANS:

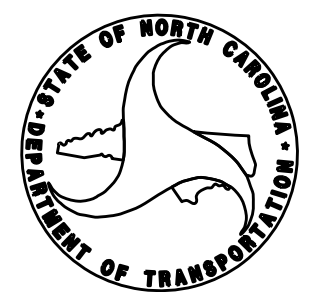
STD. NO.	TITLE
1205.01	PAVEMENT MARKINGS - LINE TYPES AND OFFSETS
1205.02	PAVEMENT MARKINGS - TWO-LANE AND MULTILANE ROADWAYS
1205.03	PAVEMENT MARKINGS - EXIT AND ENTRANCE RAMP
1205.08	PAVEMENT MARKINGS - SYMBOLS AND WORD MESSAGES
1205.12	PAVEMENT MARKINGS - BRIDGES
1250.01	RAISED PAVEMENT MARKERS - INSTALLATION SPACING
1251.01	RAISED PAVEMENT MARKERS - PERMANENT AND TEMPORARY
1253.01	RAISED PAVEMENT MARKERS - SNOWPLOWABLE
1261.01	GUARDRAIL AND BARRIER DELINEATORS - INSTALLATION SPACING
1261.02	GUARDRAIL AND BARRIER DELINEATORS - TYPES AND MOUNTING
1262.01	GUARDRAIL END DELINEATION

FINAL PAVEMENT MARKING SCHEDULE

SYMBOL	DESCRIPTION
THERMOPLASTIC	
T20	WHITE EDGELINE (6", 90 MIL)
T22	10FT. WHITE SKIP (6", 90 MIL)
T23	3 FT. - 9 FT./SP WHITE MINISKIP (6", 90 MIL)
T30	YELLOW EDGELINE (6", 90 MIL)
T50	WHITE GORELINE (12", 90 MIL)
T53	WHITE SOLID LANE LINE (12", 90 MIL)
T79	MERGE ARROW (90 MIL)

N.C.D.O.T CONTACT INFORMATION

KELVIN JORDAN SIGNING & DELINEATION REGIONAL ENGINEER
SIGNING & DELINEATION PROJECT DESIGN ENGINEER



GENERAL NOTES

THE FOLLOWING GENERAL NOTES APPLY AT ALL TIMES FOR THE DURATION OF THE CONSTRUCTION PROJECT, EXCEPT WHEN OTHERWISE NOTED IN THE PLAN, OR DIRECTED BY THE ENGINEER.

A) INSTALL PAVEMENT MARKINGS AND PAVEMENT MARKERS ON THE FINAL SURFACE AS FOLLOWS:

ROAD NAME	MARKING	MARKER
US 23/74	THERMOPLASTIC	NON-CAST IRON SNOWPLOWABLE
US 19 RAMP	THERMOPLASTIC	NONE

- B) TIE PROPOSED PAVEMENT MARKING LINES TO EXISTING PAVEMENT MARKING LINES.
- C) REMOVE/REPLACE ANY CONFLICTING/DAMAGED PAVEMENT MARKINGS AND MARKERS.
- D) PASSING ZONES WILL BE DETERMINED IN THE FIELD AND MUST BE APPROVED BY THE ENGINEER.
- E) STOP BAR LOCATION AT NON-SIGNALIZED INTERSECTIONS MAY BE ADJUSTED AS DIRECTED BY THE ENGINEER.
- F) REMOVE ALL RESIDUE AND SURFACE LAITANCE BY ACCEPTABLE METHODS AND TREAT WITH APPROVED PRIMER ON CONCRETE BRIDGE DECKS PRIOR TO PLACING THERMOPLASTIC PAVEMENT MARKING MATERIAL.
- G) UNLESS OTHERWISE SPECIFIED, HEATED-IN-PLACE THERMOPLASTIC MAY BE USED IN LIEU OF EXTRUDED THERMOPLASTIC FOR STOP BARS, SYMBOLS, CHARACTERS AND DIAGONALS. IF HEATED-IN-PLACE IS USED, IT SHALL BE PAID FOR USING THE EXTRUDED THERMOPLASTIC PAY ITEM.
- H) UNLESS OTHERWISE SPECIFIED, HEATED-IN-PLACE THERMOPLASTIC MAY BE USED IN LIEU OF COLD APPLIED PLASTIC FOR STOP BARS, SYMBOLS, CHARACTERS AND DIAGONALS ON ASPHALT OR CONCRETE ROADWAYS. IF HEATED-IN-PLACE IS USED, IT SHALL BE PAID FOR USING THE COLD APPLIED PAY ITEM.

PLAN PREPARED BY:

JEFFREY KOONTZ, P.E. PROJECT ENGINEER
KALEAB MAREGN, PE DESIGN ENGINEER



NC FIRM LICENSE No-F-0342
5438 Wade Park Blvd, Suite 200
Raleigh, NC 27607
(919) 854-6200 • (919) 854-6259(FAX)

B-3186/B-5898

PMP 1

NORTH CAROLINA DEPARTMENT OF TRANSPORTATION

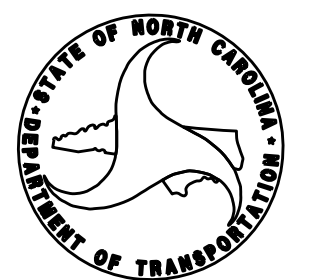
APPROVED: Jeffrey D. Koontz

DATE: 12/12/2023

SEAL:

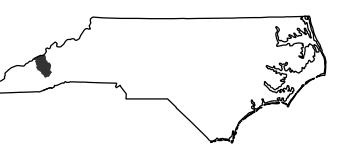


DOCUMENT NOT CONSIDERED FINAL UNLESS ALL SIGNATURES COMPLETED



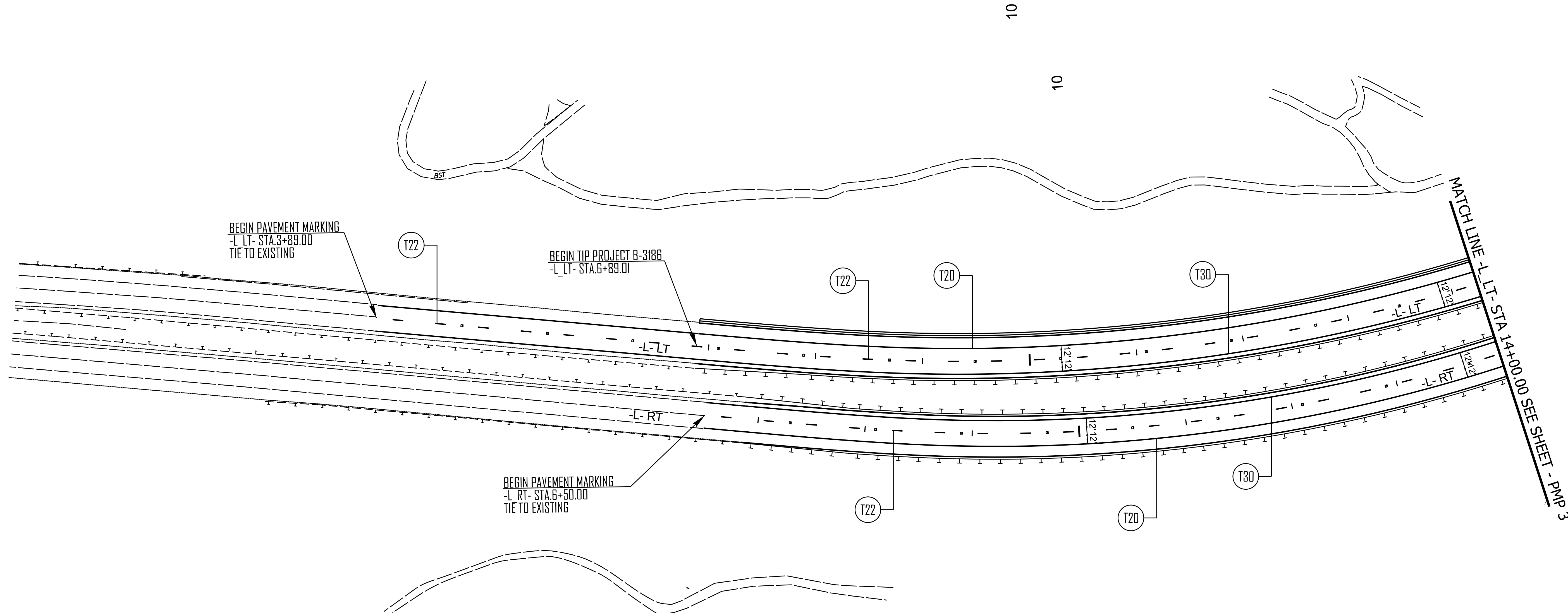
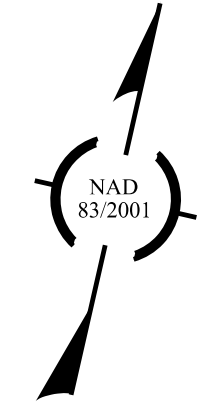
T.I.P.: B-3186 / B-5898

CONTRACT: C204684



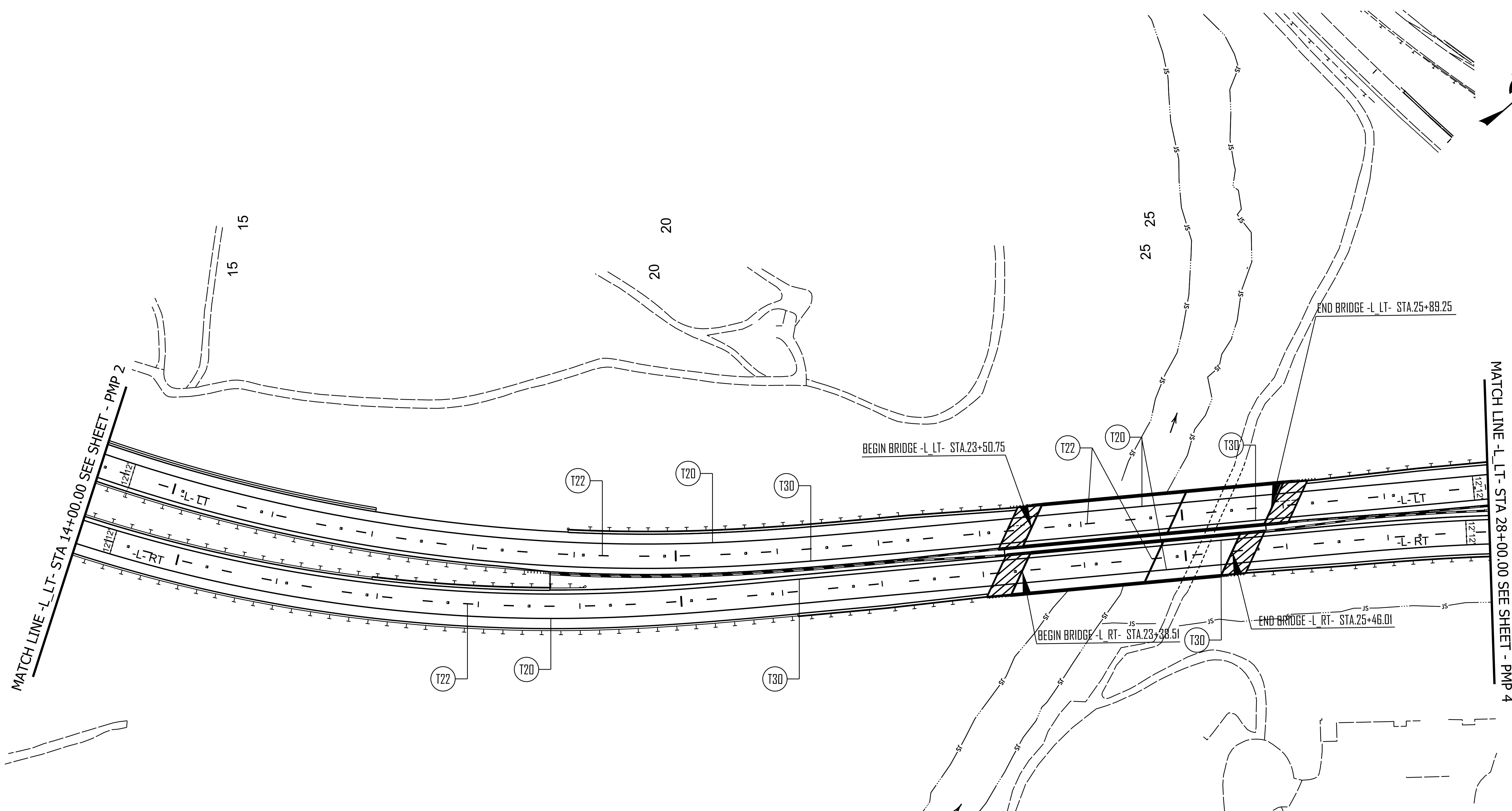
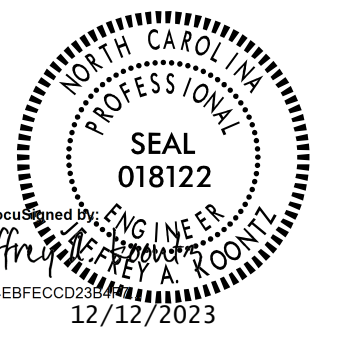
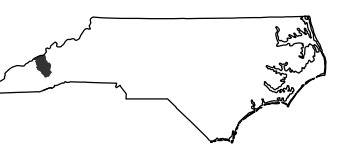
DOCUMENT NOT CONSIDERED FINAL
UNLESS ALL SIGNATURES COMPLETED

PREPARED BY
AECOM
NC FIRM LICENSE No. F-0342
5438 Wade Park Blvd., Ste 200
Raleigh, NC 27607
919-854-6200



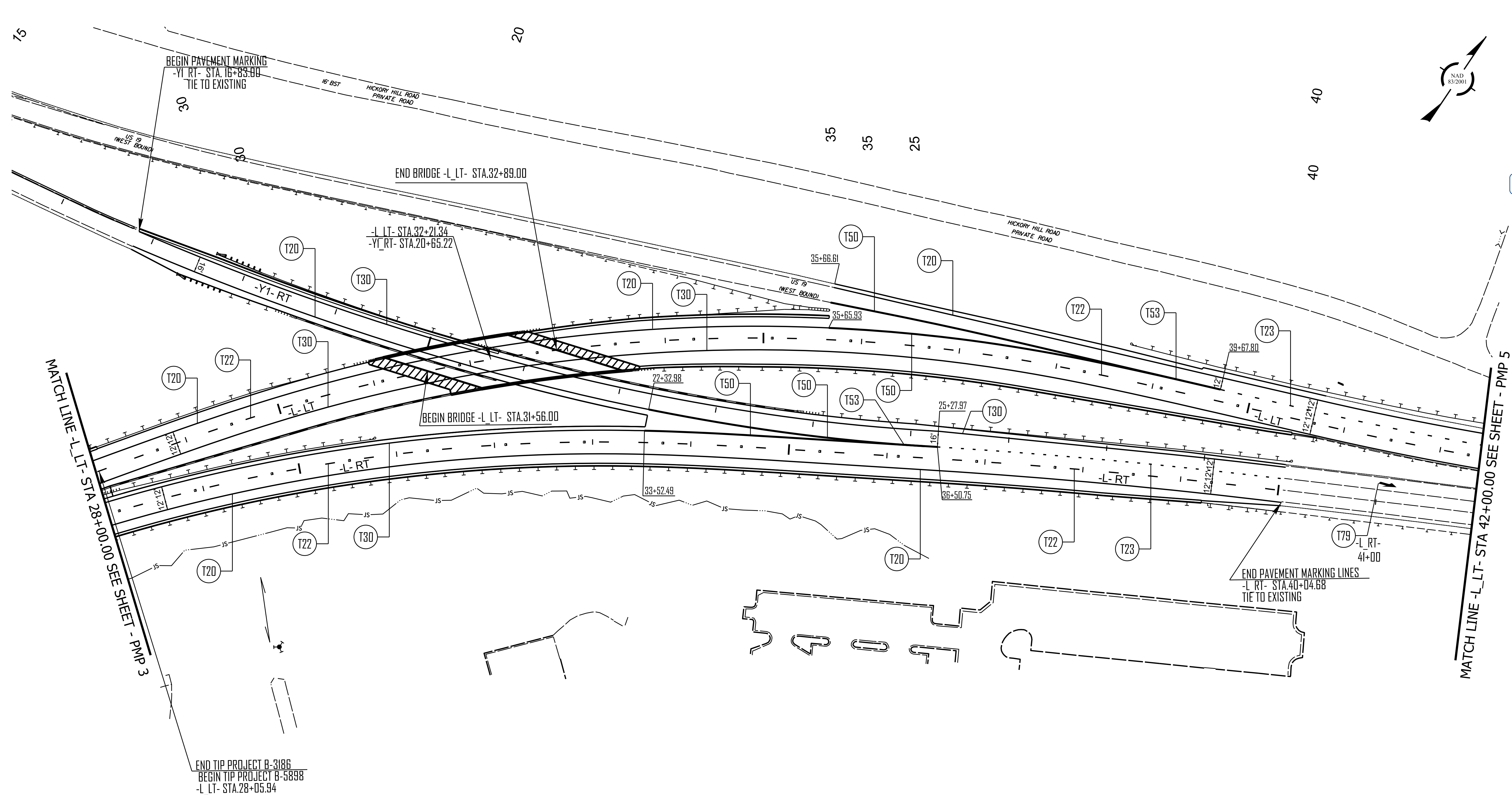
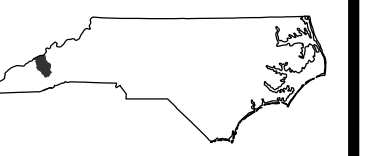
FINAL PAVEMENT MARKING SCHEDULE

SYMBOL	DESCRIPTION
THERMOPLASTIC	
T20	WHITE EDGELINE (6", 90 MIL)
T22	10FT. WHITE SKIP (6", 90 MIL)
T23	3 FT. - 9 FT./SP WHITE MINISKIP (6", 90 MIL)
T30	YELLOW EDGELINE (6", 90 MIL)
T50	WHITE GORELINE (12", 90 MIL)
T53	WHITE SOLID LANE LINE (12", 90 MIL)
T79	MERGE ARROW (90 MIL)



FINAL PAVEMENT MARKING SCHEDULE

SYMBOL	DESCRIPTION
THERMOPLASTIC	
T20	WHITE EDGELINE (6", 90 MIL)
T22	10FT. WHITE SKIP (6", 90 MIL)
T23	3 FT. - 9 FT./SP WHITE MINISKIP (6", 90 MIL)
T30	YELLOW EDGELINE (6", 90 MIL)
T50	WHITE GORELINE (12", 90 MIL)
T53	WHITE SOLID LANE LINE (12", 90 MIL)
T79	MERGE ARROW (90 MIL)



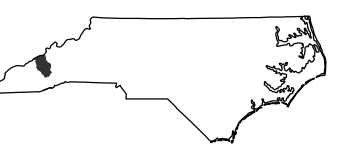
FINAL PAVEMENT MARKING SCHEDULE

SYMBOL	DESCRIPTION
THERMOPLASTIC	
T20	WHITE EDGELINE (6", 90 MIL)
T22	10FT. WHITE SKIP (6", 90 MIL)
T23	3 FT. - 9 FT./SP WHITE MINISKIP (6", 90 MIL)
T30	YELLOW EDGELINE (6", 90 MIL)
T50	WHITE GORELINE (12", 90 MIL)
T53	WHITE SOLID LANE LINE (12", 90 MIL)
T79	MERGE ARROW (90 MIL)

END TIP PROJECT B-3186
BEGIN TIP PROJECT B-5898
-L LT- STA.28+05.94

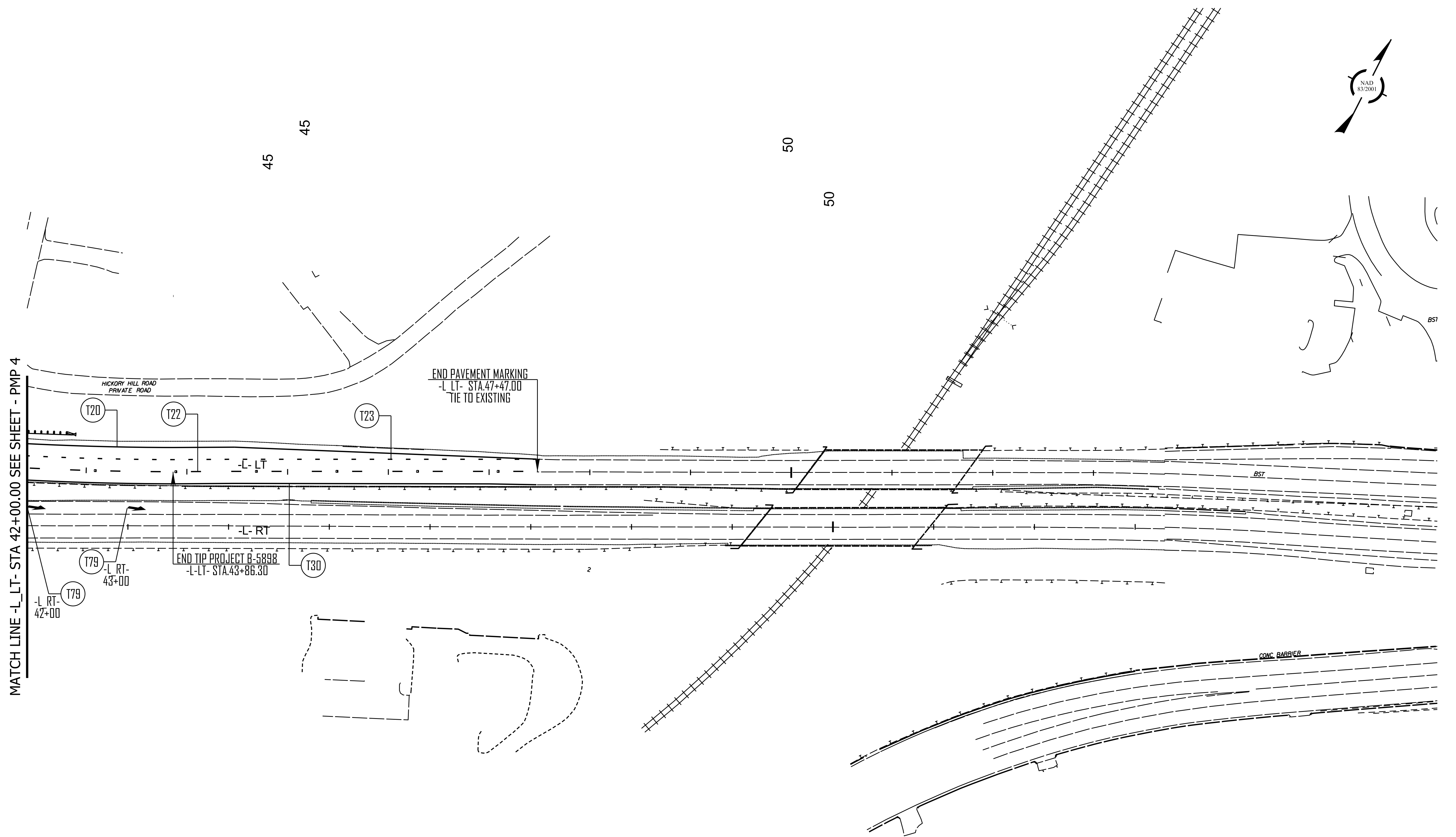
MATCH LINE -L LT- STA 42+00.00 SEE SHEET - PMP 5

MATCH LINE -L LT- STA 28+00.00 SEE SHEET - PMP 3



DOCUMENT NOT CONSIDERED FINAL
UNLESS ALL SIGNATURES COMPLETED

PREPARED BY
AECOM
NC FIRM LICENSE No. F-0342
5438 Wade Park Blvd., Ste 200
Raleigh, NC 27607
919-854-6200



FINAL PAVEMENT MARKING SCHEDULE

SYMBOL	DESCRIPTION
THERMOPLASTIC	
T20	WHITE EDGELINE (6", 90 MIL)
T22	10FT. WHITE SKIP (6", 90 MIL)
T23	3 FT. - 9 FT./SP WHITE MINISKIP (6", 90 MIL)
T30	YELLOW EDGELINE (6", 90 MIL)
T50	WHITE GORELINE (12", 90 MIL)
T53	WHITE SOLID LANE LINE (12", 90 MIL)
T79	MERGE ARROW (90 MIL)