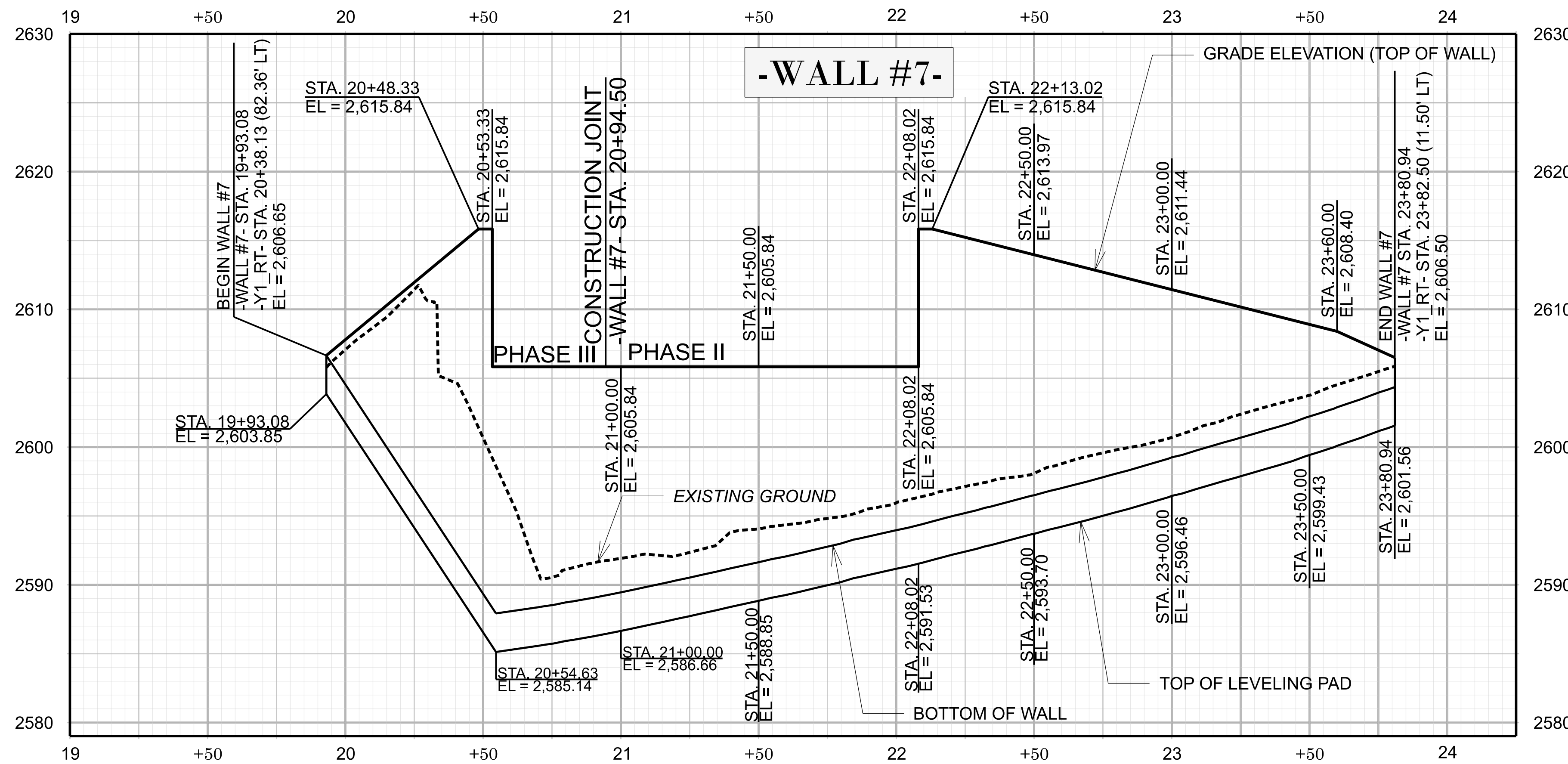
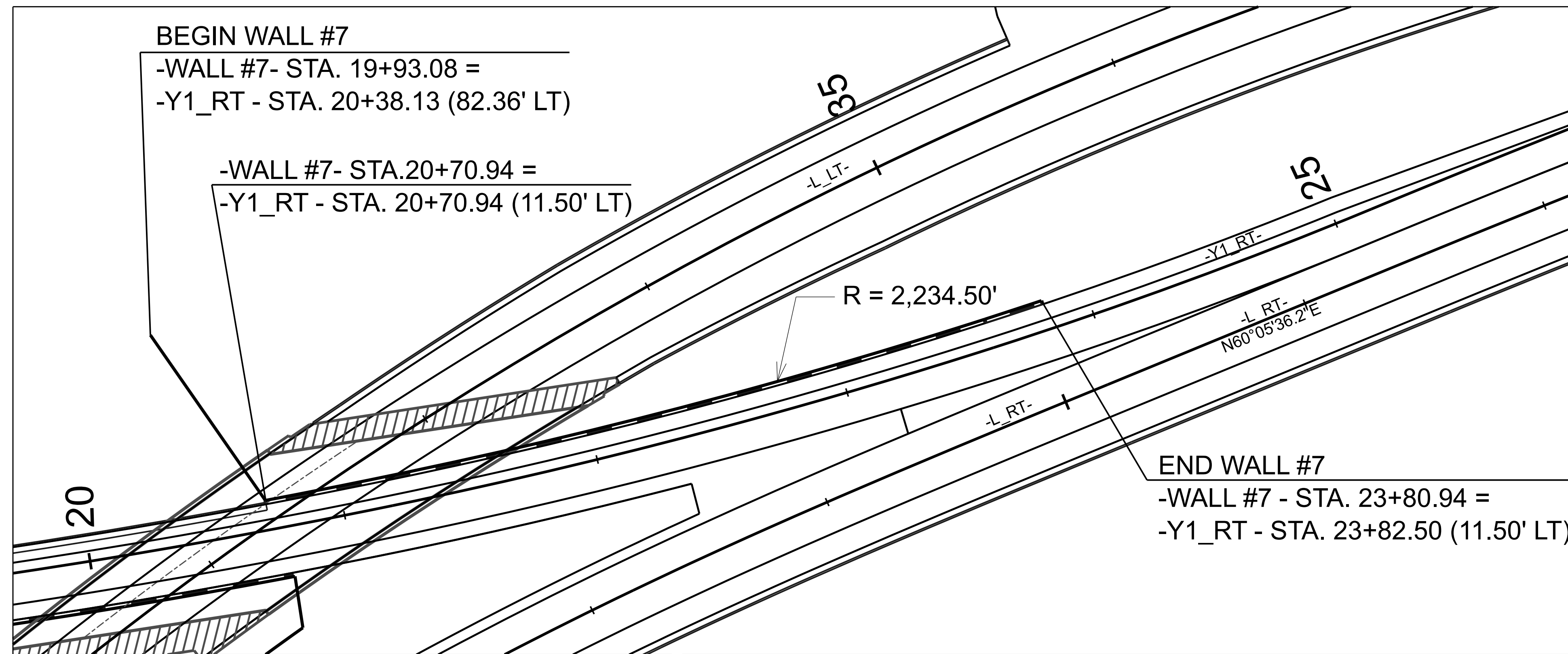
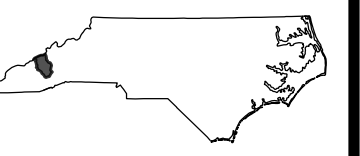


WALL #7 DETAIL SHEET

WALL 6 ELIMINATED FROM PROJECT



- NOTES:
1. APPROXIMATE WALL LENGTH = 388'
 2. APPROXIMATE WALL AREA = 5,350 SF
 3. TOP OF WALL ELEVATIONS DO NOT INCLUDE COPING



REVISIONS