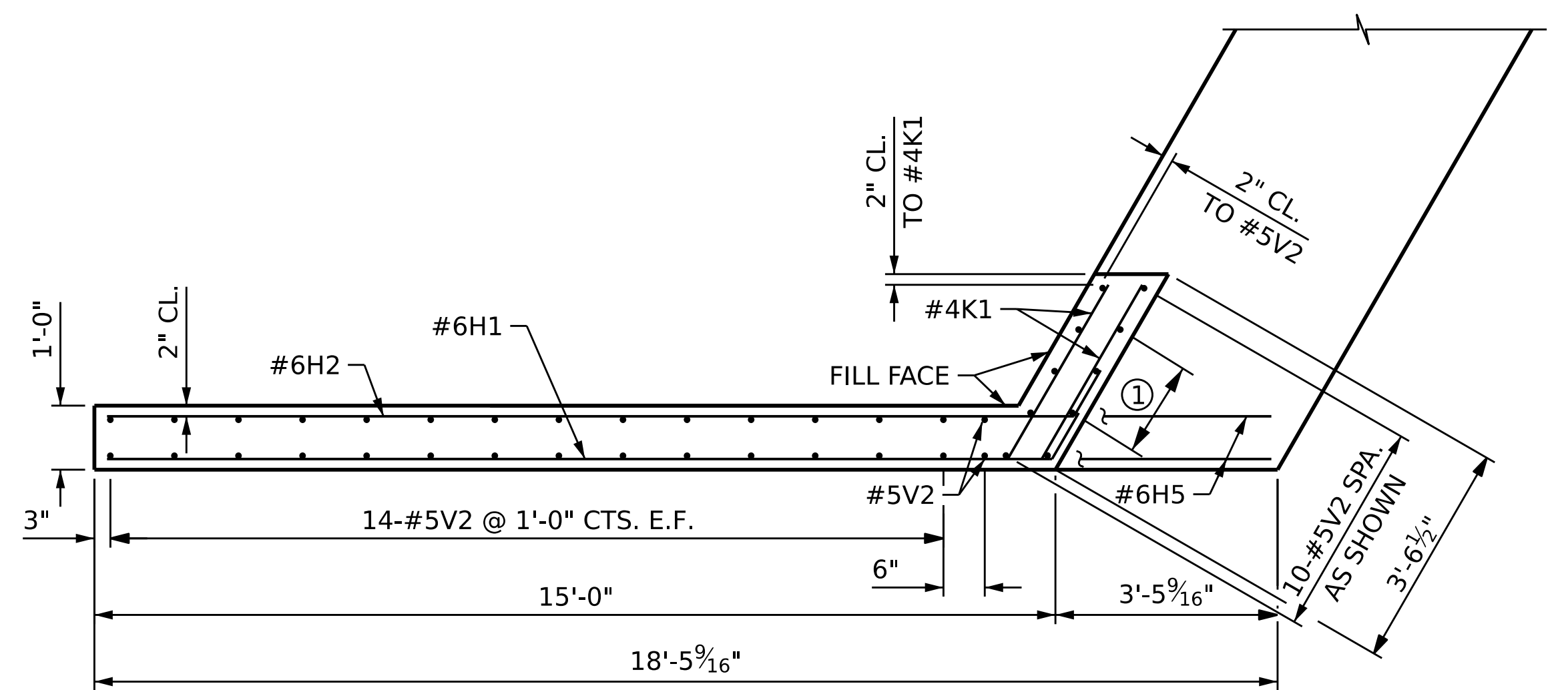
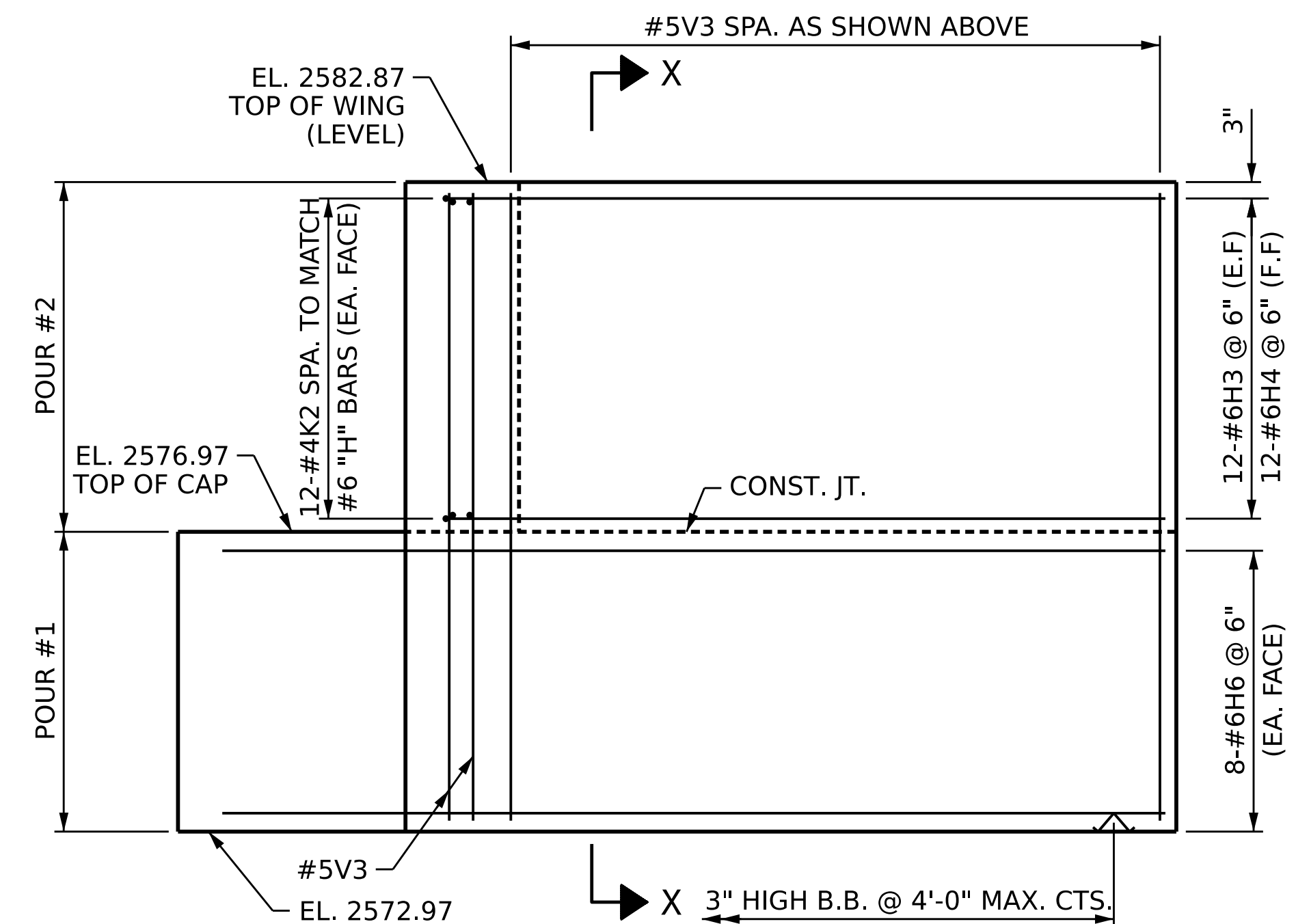


PLAN OF WING W4

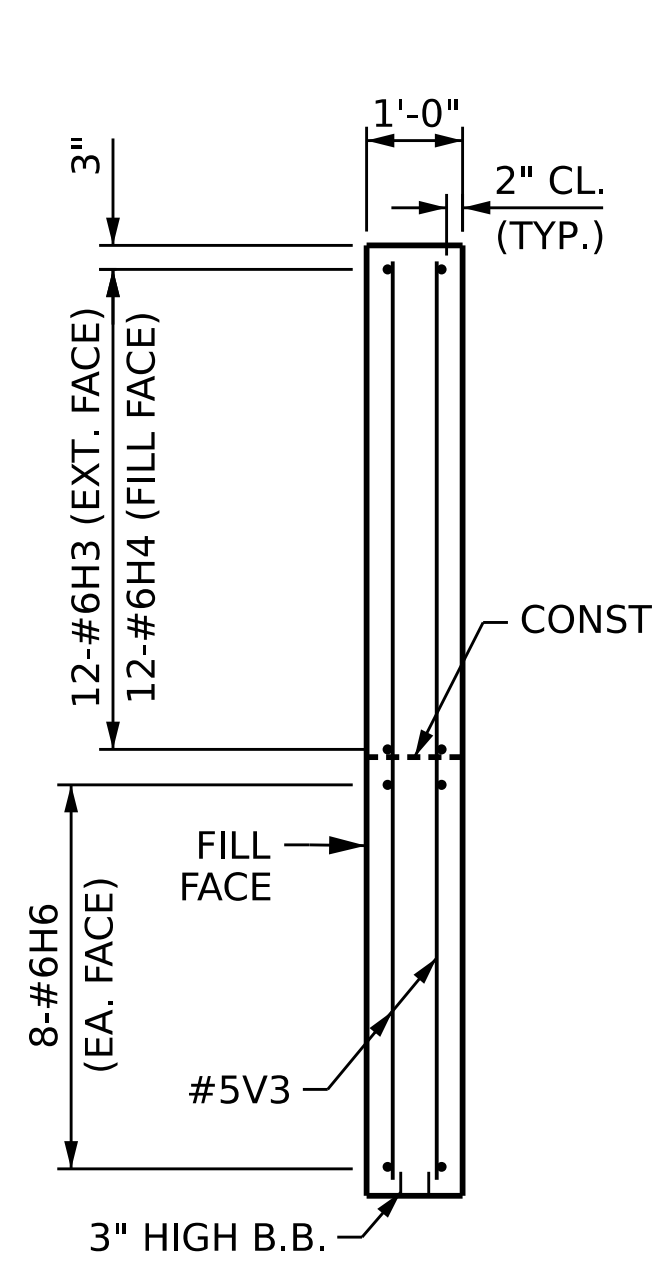
① 2 SPA. @ 9" CTS. (EA. FACE)



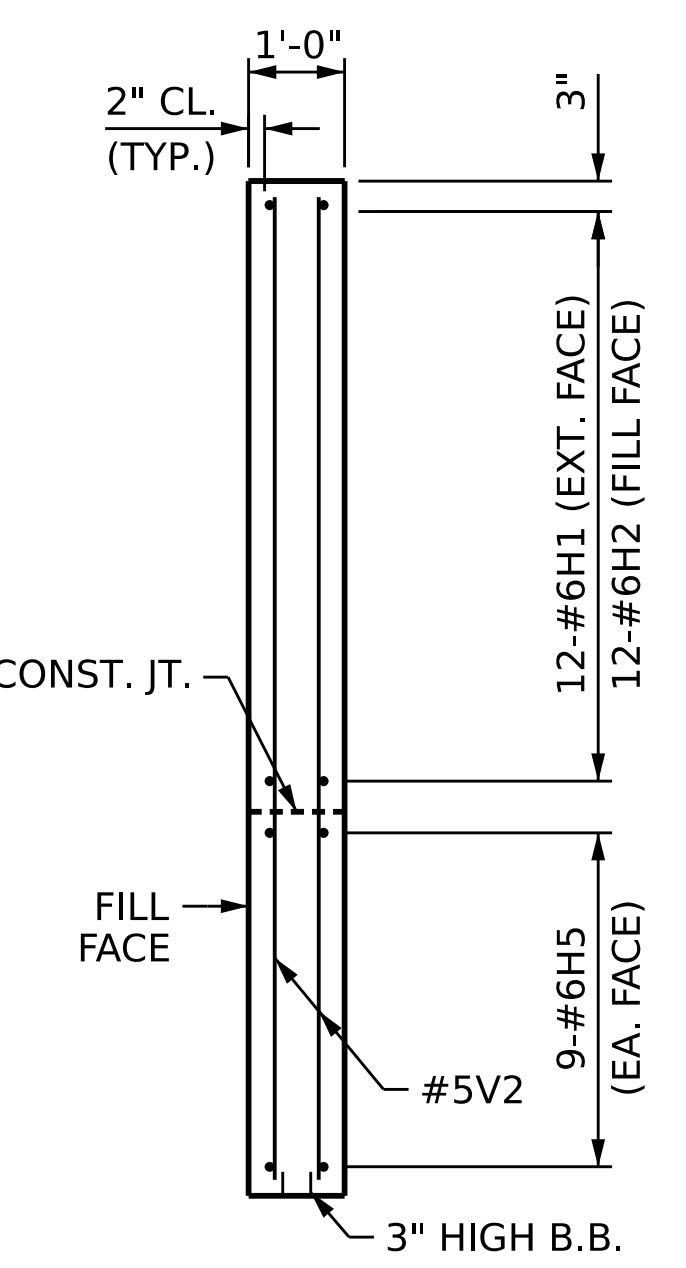
PLAN OF WING W3



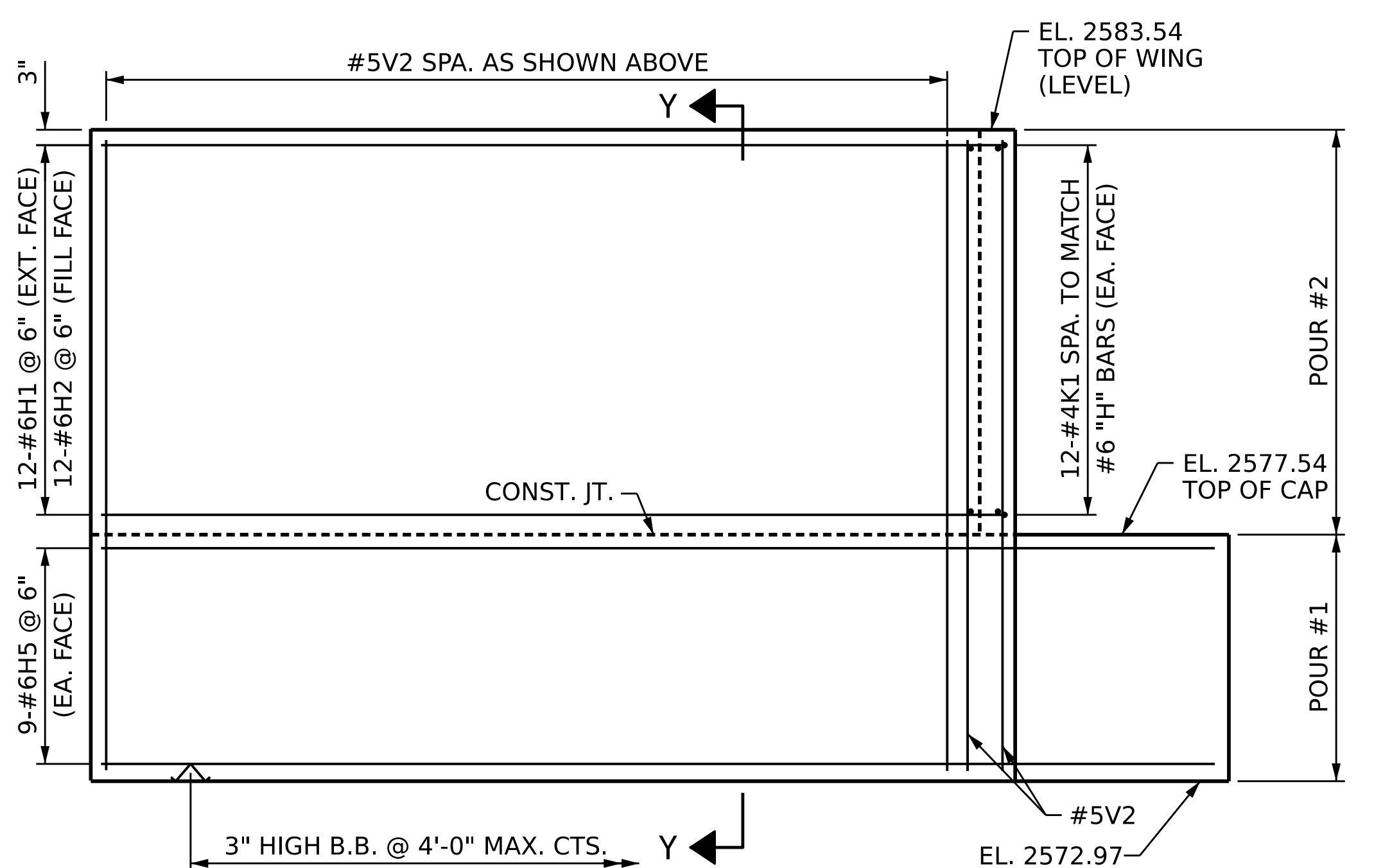
ELEVATION OF WING W4



SECTION X-X



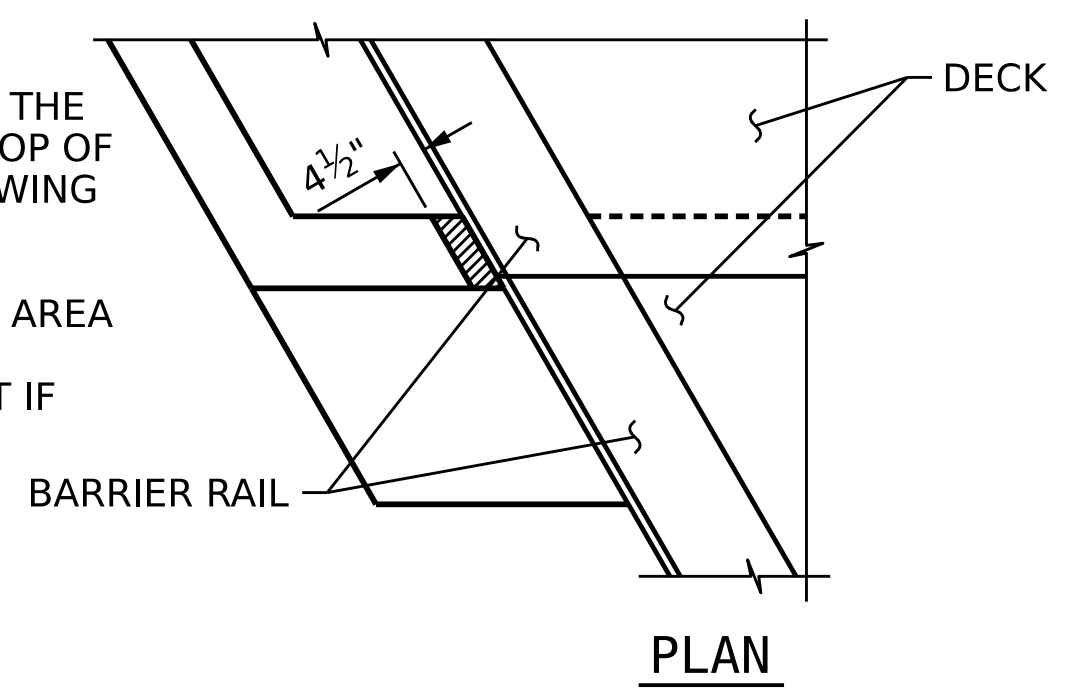
SECTION Y-Y



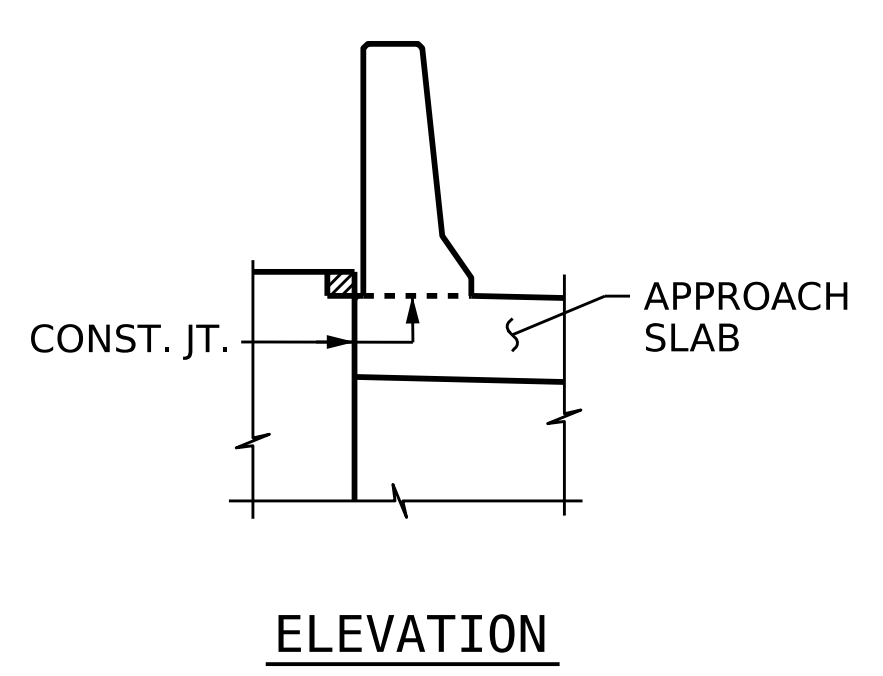
ELEVATION OF WING W3

NOTES:

CONCRETE SHALL BE POURED IN THE HATCHED AREA TO MATCH THE TOP OF CURB AND INTEGRAL END BENT WING ELEVATION.
 THE CONCRETE IN THE HATCHED AREA OF THE WING SHALL BE POURED AFTER THE BARRIER RAIL IS CAST IF SLIP FORMING IS USED.

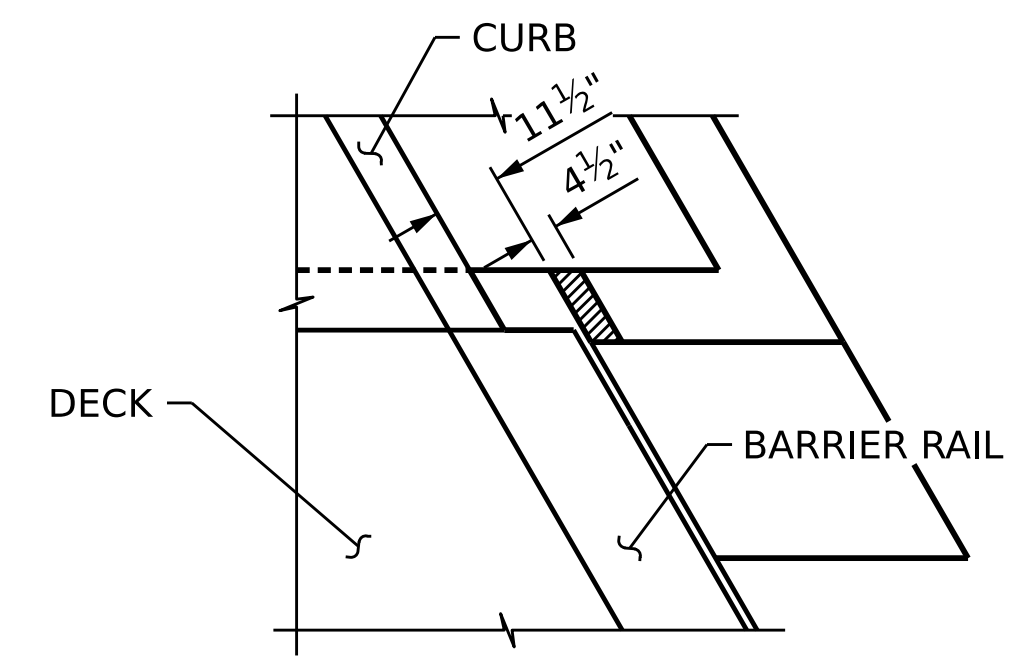


PLAN

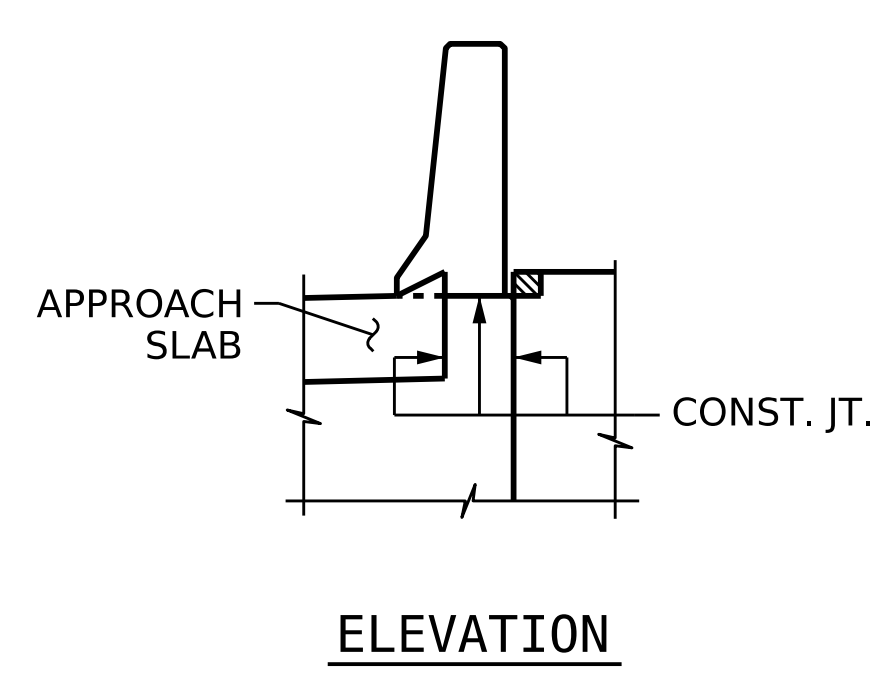


ELEVATION

BLOCKOUT IN WINGWALL W3



PLAN



ELEVATION

BLOCKOUT IN WINGWALL W4

PROJECT NO. B-3186 / B-5898
HAYWOOD COUNTY
 STATION: 24+42.26 -L_RT-
 SHEET 2 OF 3

AECOM
 AECOM TECHNICAL SERVICES OF NC, INC.
 5438 WADE PARK BOULEVARD, SUITE 200
 RALEIGH, NC 27607
 (919) 854-6200 www.aecom.com
 AECOM License No. F0242

Professional Engineer Seal
 NORTH CAROLINA PROFESSIONAL ENGINEER
 SEAL 054212
 A.K. VASUDEVAN

STATE OF NORTH CAROLINA DEPARTMENT OF TRANSPORTATION RALEIGH					
SUBSTRUCTURE					
INTEGRAL END BENT 2					
REVISIONS					
NO.	BY:	DATE:	NO.	BY:	DATE:
1			3		
2			4		
SHEET NO.					S2-26
TOTAL SHEETS					31

DRAWN BY :	S.NATARAJAN	DATE :	05/2023
CHECKED BY :	A.K. VASUDEVAN	DATE :	05/2023
DESIGN ENGINEER OF RECORD :	A.K. VASUDEVAN	DATE :	06/2023

DOCUMENT NOT CONSIDERED FINAL UNLESS ALL SIGNATURES COMPLETED

10/18/2023