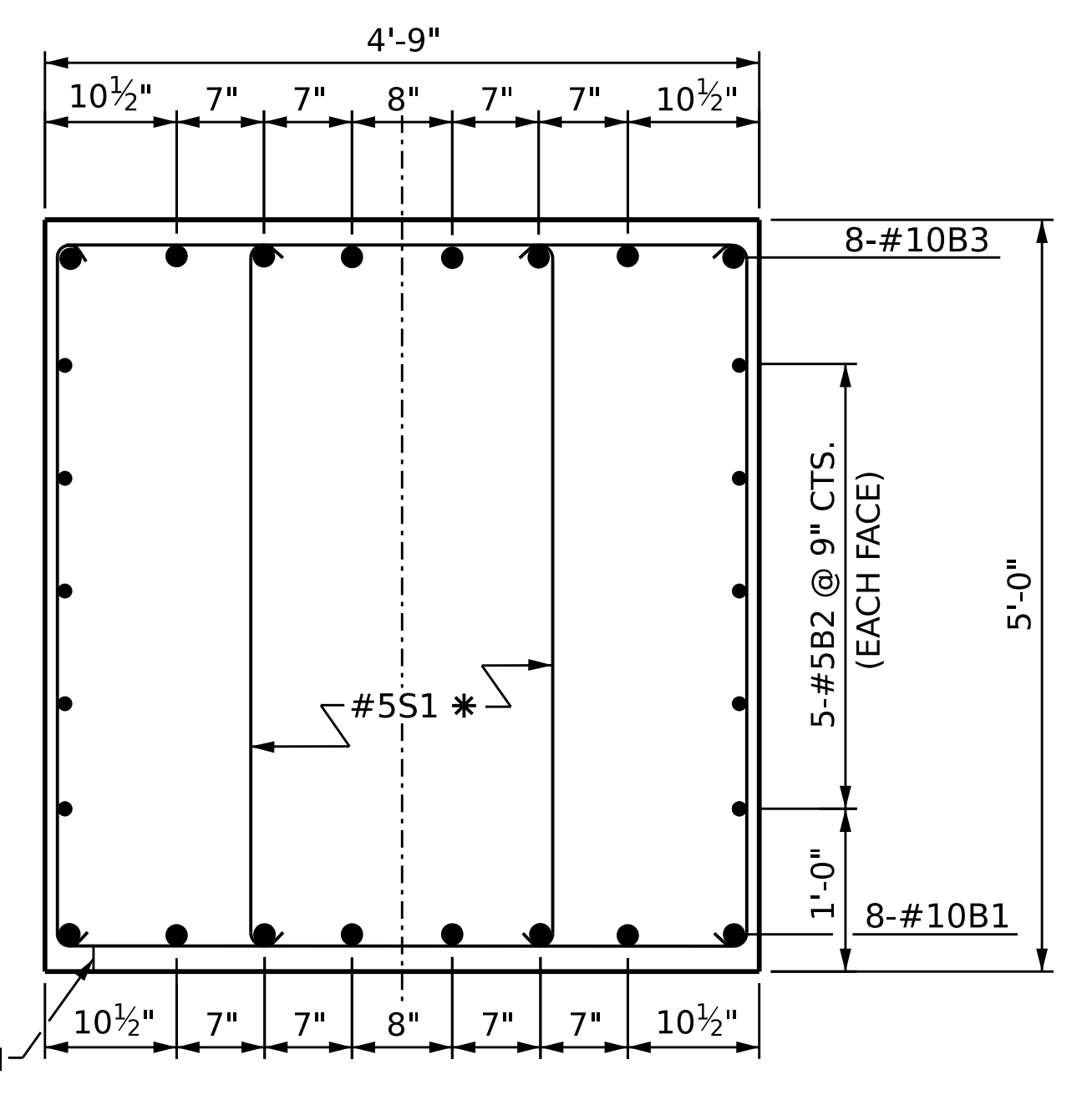
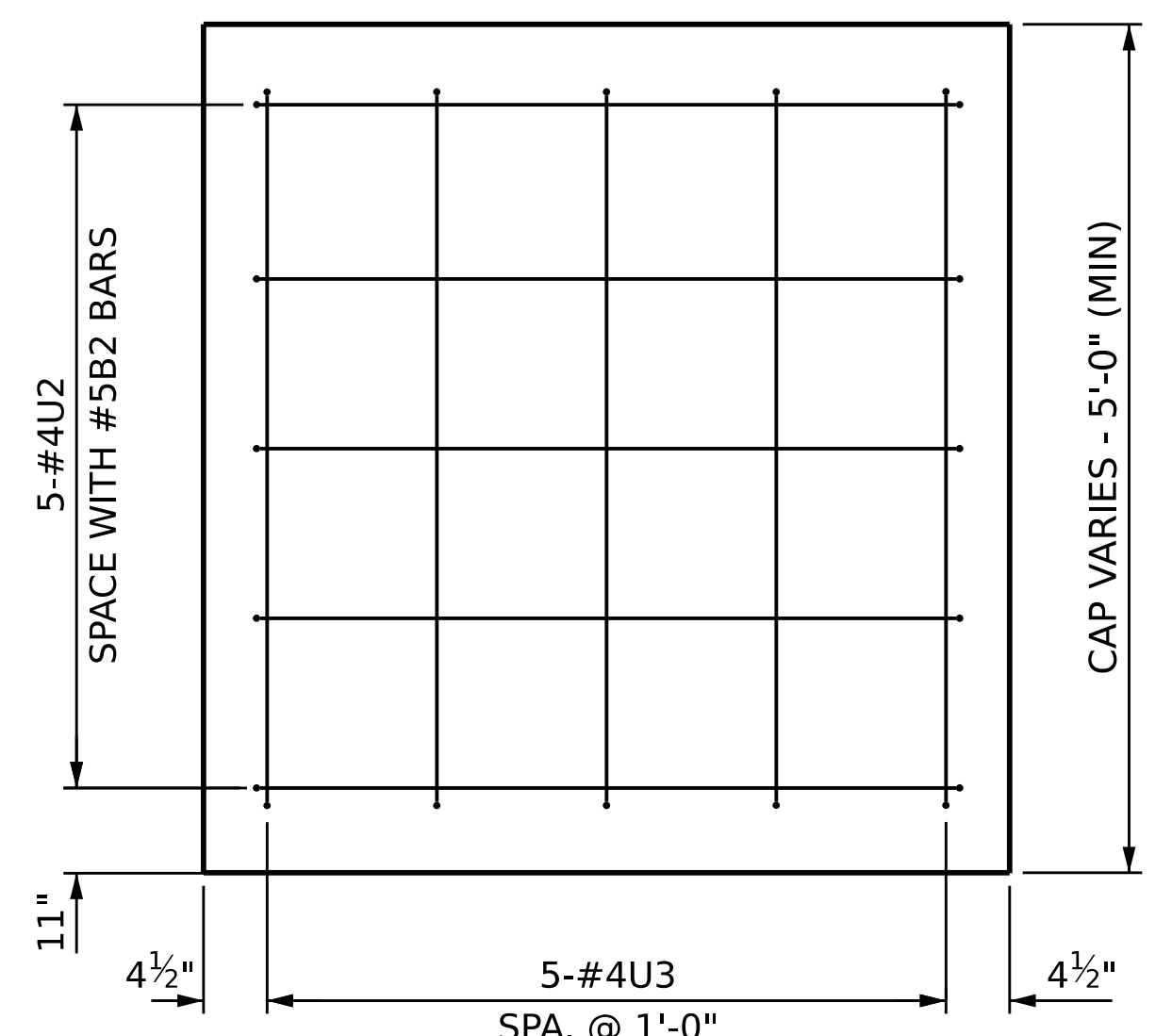


SECTION A-A

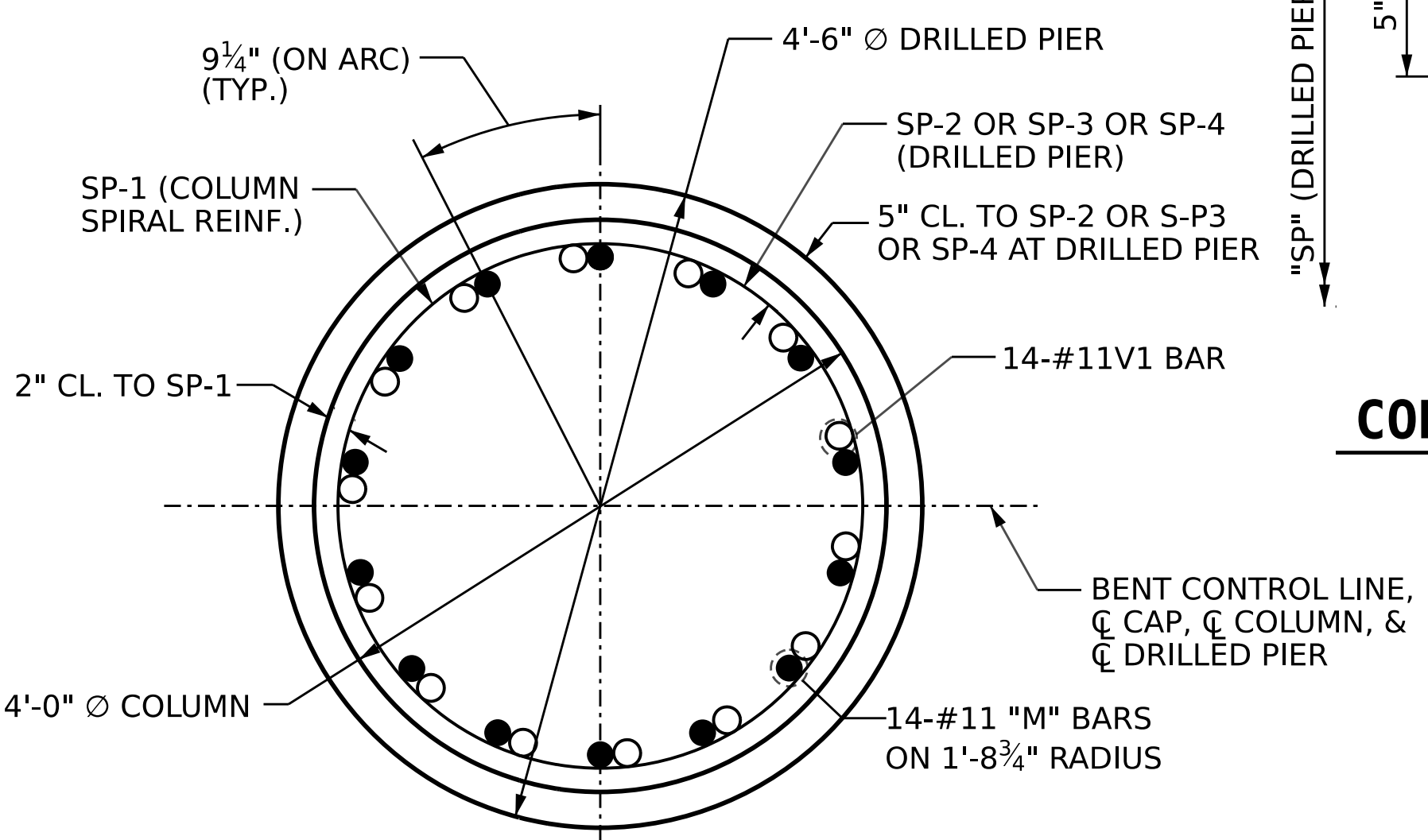


SECTION B-B

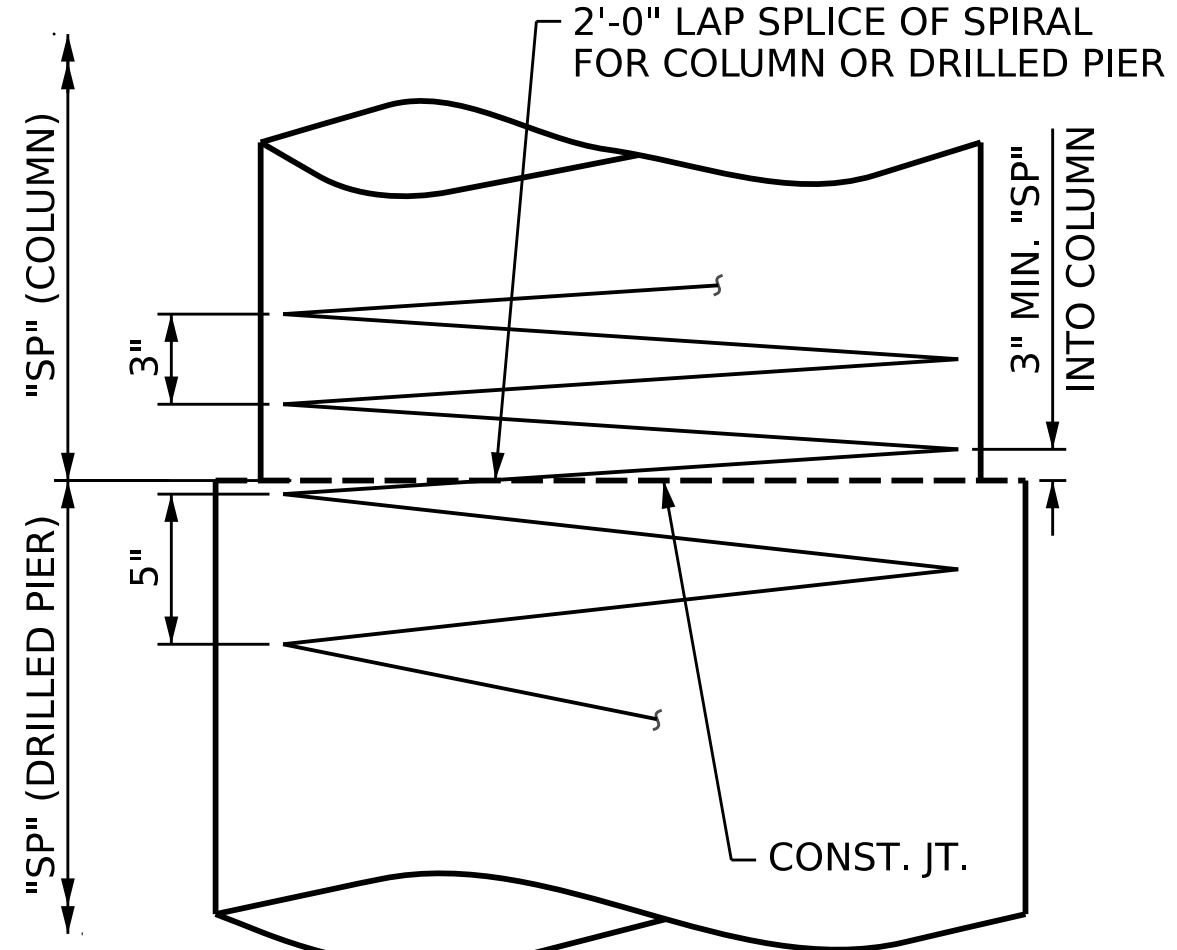
* INVERT ALTERNATIVE PAIR OF #5S1 STIRRUPS



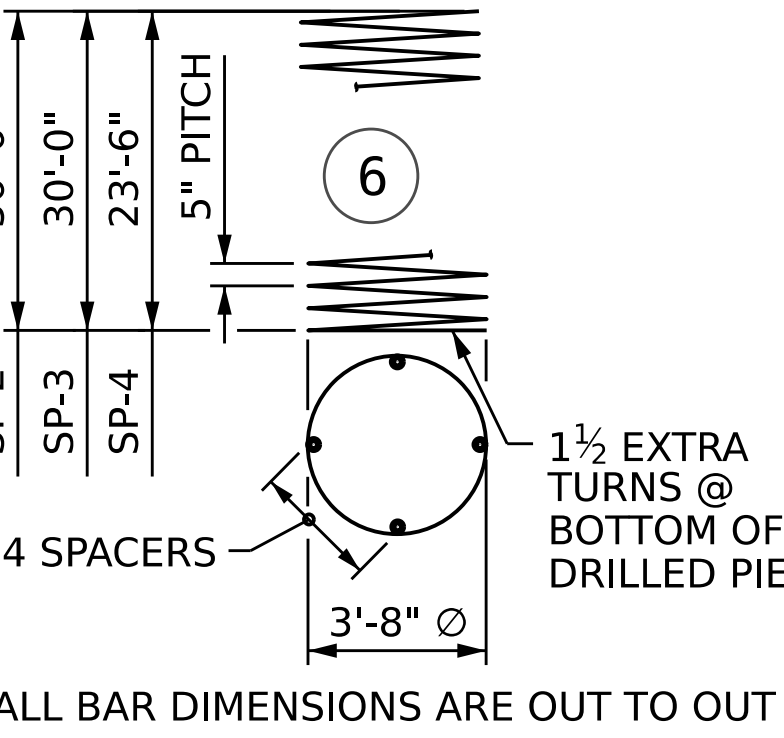
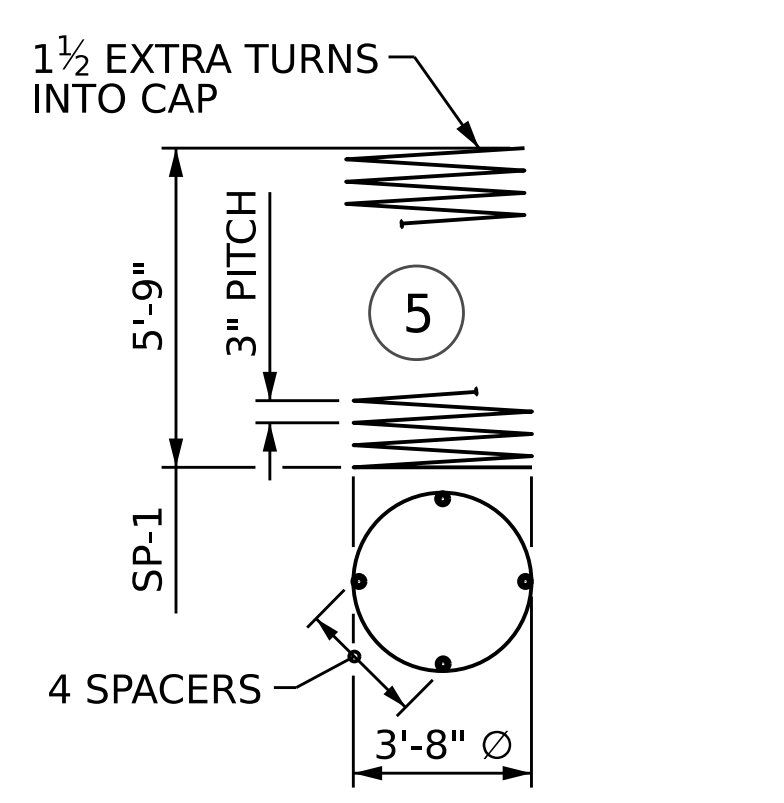
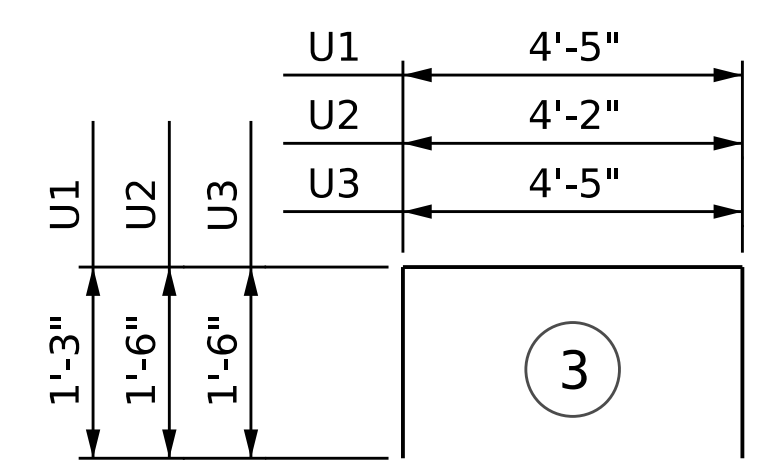
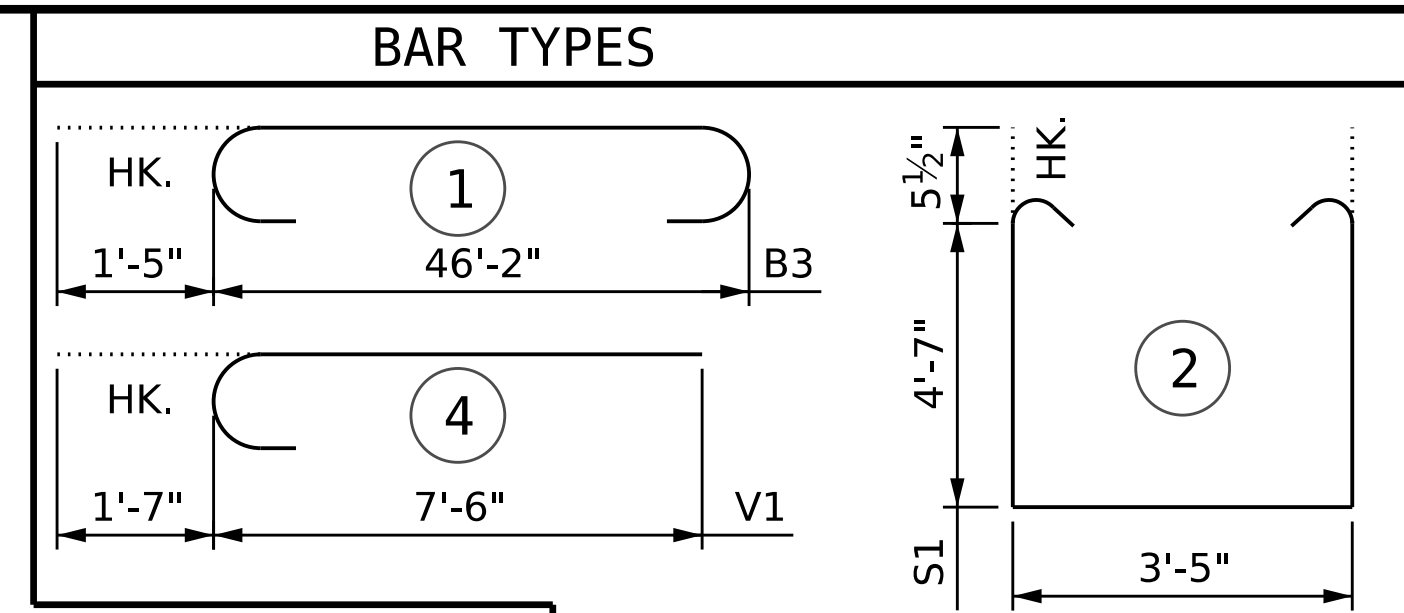
CAP END VIEW
(LEFT END VIEW SHOWN, RIGHT END SIMILAR)



SECTION THRU COLUMN & DRILLED PIER



CONSTRUCTION JOINT DETAIL



ALL BAR DIMENSIONS ARE OUT TO OUT

BILL OF MATERIAL

BENT 1					
BAR	NO.	SIZE	TYPE	LENGTH	WEIGHT
B1	8	10	STR	46'-2"	1,589
B2	10	5	STR	46'-2"	482
B3	8	10	1	49'-0"	1,687
B4	32	4	STR	7'-7"	162
M1	14	11	STR	44'-7"	3,316
M2	14	11	STR	38'-1"	2,833
M3	14	11	STR	31'-7"	2,349
S1	140	5	2	13'-6"	1,971
U1	72	4	3	6'-11"	333
U2	10	4	3	7'-2"	48
U3	10	4	3	7'-5"	50
V1	42	11	4	9'-1"	2,027

REINFORCING STEEL 16,847 LBS.

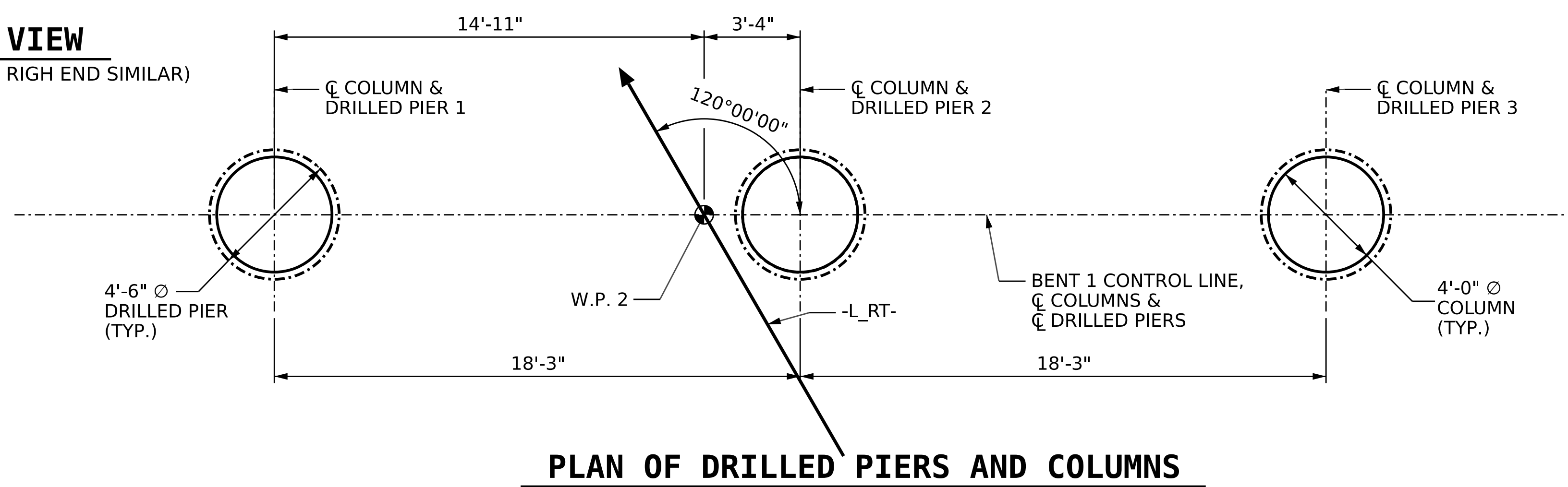
SP	NO.	SIZE	TYPE	LENGTH	WEIGHT
SP-1	3	*	5	278'-8"	558
SP-2	1	**	6	1011'-0"	1,054
SP-3	1	**	6	834'-0"	870
SP-4	1	**	6	657'-0"	685

SPIRAL COLUMN REINFORCING STEEL 3,167 LBS.
* THE SP-1 SPIRAL REINFORCING STEEL SHALL BE W20 OR D-20 COLD DRAWN WIRE OR #4 PLAIN OR DEFORMED BAR
** THE SP-2, SP-3 & SP-4 SPIRAL REINFORCING STEEL SHALL BE W31 OR D-31 COLD DRAWN WIRE OR #5 PLAIN OR DEFORMED BAR

CLASS A CONCRETE BREAKDOWN	
POUR #2 (COLUMNS)	7.7 C.Y.
POUR #3 (CAP)	43.2 C.Y.

TOTAL CLASS A CONCRETE	
TOTAL CLASS A CONCRETE	50.9 C.Y.

DRILLED PIERS:	
DRILLED PIER CONCRETE POUR #1 (DRILLED PIERS)	53.9 C.Y.



PLAN OF DRILLED PIERS AND COLUMNS

PROJECT NO. B-3186 / B-5898
HAYWOOD COUNTY
STATION: 24+42.26 -L_RT-

SHEET 2 OF 2

STATE OF NORTH CAROLINA DEPARTMENT OF TRANSPORTATION RALEIGH					
SUBSTRUCTURE					
BENT 1					
REVISIONS					SHEET NO.
NO.	BY:	DATE:	NO.	BY:	DATE:
1			3		
2			4		
TOTAL SHEETS					31

DOCUMENT NOT CONSIDERED FINAL UNLESS ALL SIGNATURES COMPLETED

10/18/2023

DRAWN BY :	S.NATARAJAN	DATE :	04/2023
CHECKED BY :	A.K.VASUDEVAN	DATE :	05/2023
DESIGN ENGINEER OF RECORD :	A.K.VASUDEVAN	DATE :	06/2023