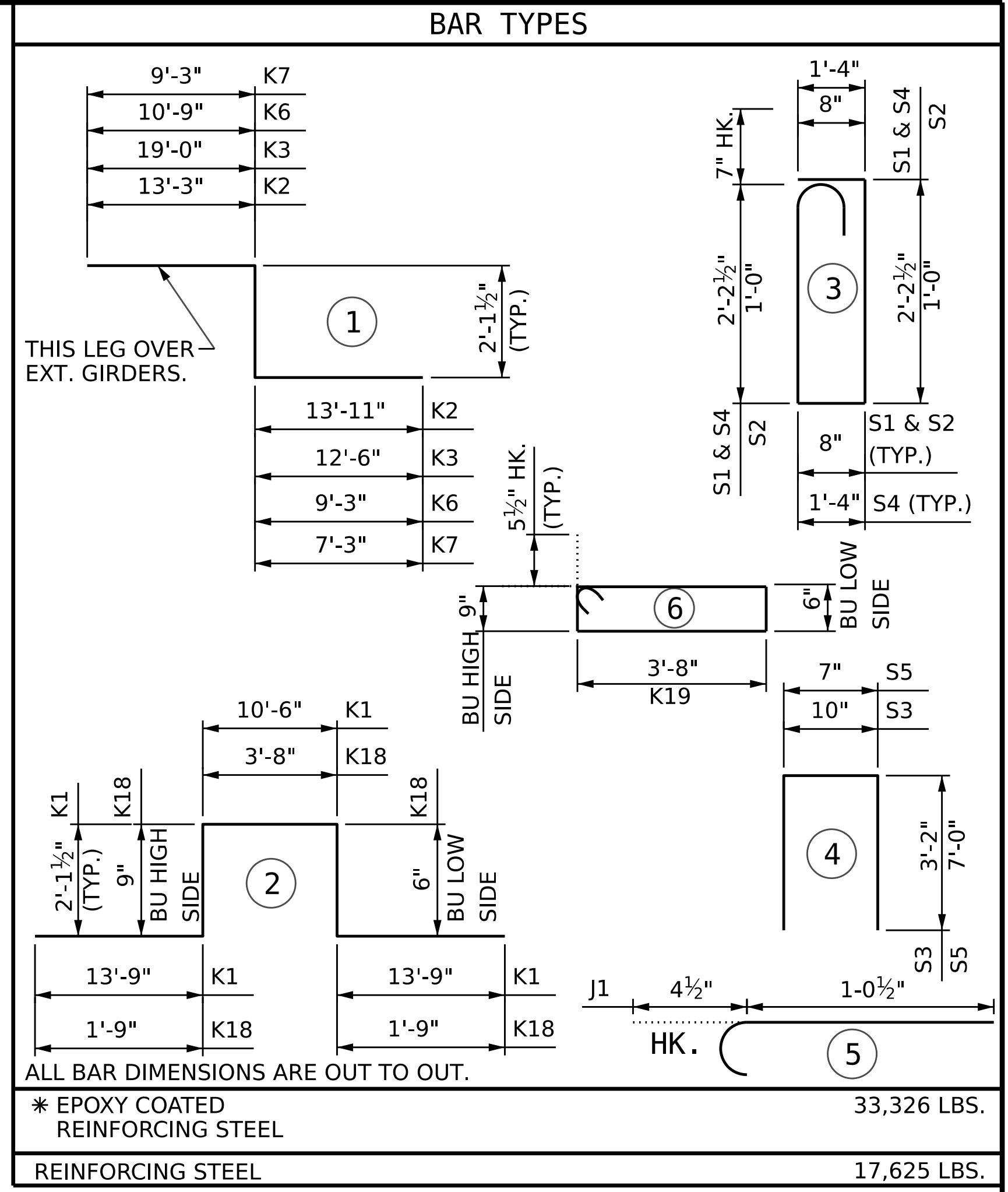


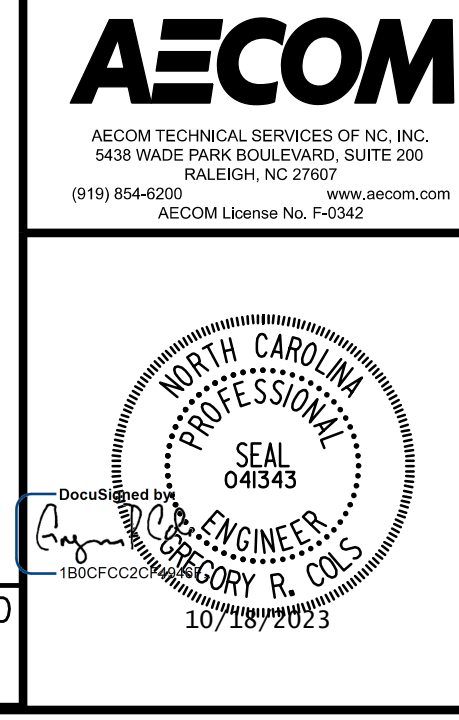
REINFORCING BAR SCHEDULE						REINFORCING BAR SCHEDULE											
STAGE I			STAGE I (CONTD.)			STAGE II (CONTD.)			STAGE II (CONTD.)								
BAR NO.	SIZE	TYPE	LENGTH	WEIGHT	BAR NO.	SIZE	TYPE	LENGTH	WEIGHT	BAR NO.	SIZE	TYPE	LENGTH	WEIGHT			
*A1	194	5	STR	20'-7"	4165	*A322	5	5	STR	6'-8"	35	*A510	1	5	STR	7'-3"	9
A2	194	5	STR	20'-2"	4081	*A323	5	5	STR	5'-6"	29	*A511	1	5	STR	7'-5"	8
*A101	5	5	STR	31'-6"	165	*A324	1	5	STR	5'-3"	6	*A512	1	5	STR	7'-1"	8
*A102	5	5	STR	29'-11"	157	*A325	1	5	STR	5'-0"	6	*A513	1	5	STR	6'-9"	8
*A103	5	5	STR	28'-4"	148	A401	5	5	STR	35'-4"	185	*A514	1	5	STR	6'-5"	7
*A104	5	5	STR	26'-9"	140	A402	5	5	STR	33'-11"	177	*A515	1	5	STR	6'-0"	7
*A105	5	5	STR	25'-3"	132	A403	5	5	STR	32'-6"	170	*A516	1	5	STR	5'-8"	6
*A106	5	5	STR	23'-7"	123	A404	5	5	STR	31'-0"	162	*A517	1	5	STR	5'-4"	6
*A107	5	5	STR	22'-0"	115	A405	5	5	STR	29'-7"	155	*A518	1	5	STR	5'-0"	6
*A108	5	5	STR	20'-5"	107	A406	5	5	STR	28'-2"	147	*A519	1	5	STR	4'-8"	5
*A109	5	5	STR	18'-10"	99	A407	5	5	STR	26'-9"	140	*A520	1	5	STR	4'-3"	5
*A110	5	5	STR	17'-3"	90	A408	5	5	STR	25'-5"	133	A601	1	5	STR	10'-11"	12
*A111	5	5	STR	15'-8"	82	A409	5	5	STR	24'-0"	126	A602	1	5	STR	10'-6"	11
*A112	5	5	STR	14'-1"	74	A410	5	5	STR	22'-7"	118	A603	1	5	STR	10'-2"	11
*A113	5	5	STR	12'-5"	65	A411	5	5	STR	21'-3"	111	A604	1	5	STR	9'-10"	11
*A114	5	5	STR	10'-10"	57	A412	5	5	STR	19'-11"	104	A605	1	5	STR	9'-6"	10
*A115	5	5	STR	9'-3"	49	A413	5	5	STR	18'-6"	97	A606	1	5	STR	9'-2"	10
*A116	5	5	STR	7'-7"	40	A414	5	5	STR	17'-2"	90	A607	1	5	STR	8'-10"	10
*A117	5	5	STR	6'-0"	32	A415	5	5	STR	15'-10"	83	A608	1	5	STR	8'-6"	9
*A118	5	5	STR	4'-4"	23	A416	5	5	STR	14'-6"	76	A609	1	5	STR	8'-1"	9
*A119	1	5	STR	4'-1"	5	A417	5	5	STR	13'-2"	69	A610	1	5	STR	7'-9"	9
*A120	1	5	STR	3'-9"	4	A418	5	5	STR	11'-10"	62	A611	1	5	STR	7'-5"	8
A201	5	5	STR	31'-6"	165	A419	5	5	STR	10'-6"	55	A612	1	5	STR	7'-1"	8
A202	5	5	STR	29'-11"	157	A420	5	5	STR	9'-3"	49	A613	1	5	STR	6'-9"	8
A203	5	5	STR	28'-4"	148	A421	5	5	STR	7'-11"	42	A614	1	5	STR	6'-5"	7
A204	5	5	STR	26'-9"	140	A422	5	5	STR	6'-8"	35	A615	1	5	STR	6'-0"	7
A205	5	5	STR	25'-3"	132	A423	5	5	STR	5'-6"	29	A616	1	5	STR	5'-8"	6
A206	5	5	STR	23'-7"	123	A424	1	5	STR	5'-3"	6	A617	1	5	STR	5'-4"	6
A207	5	5	STR	22'-0"	115	A425	1	5	STR	5'-0"	6	A618	1	5	STR	5'-0"	6
A208	5	5	STR	20'-5"	107	*B1	92	4	STR	32'-9"	2013	A619	1	5	STR	4'-8"	5
A209	5	5	STR	18'-10"	99	*B2	15	4	STR	34'-9"	349	A620	1	5	STR	4'-3"	5
A210	5	5	STR	17'-3"	90	*B3	6	5	STR	45'-9"	287	*A701	1	5	STR	8'-7"	9
A211	5	5	STR	15'-8"	82	*B4	60	5	STR	46'-8"	2921	*A702	1	5	STR	8'-3"	9
A212	5	5	STR	14'-1"	74	*D1	175	5	STR	6'-0"	1096	*A703	1	5	STR	7'-11"	9
A213	5	5	STR	12'-5"	65	D2	175	5	STR	6'-0"	1096	*A704	1	5	STR	7'-7"	8
A214	5	5	STR	10'-10"	57	*G1	16	6	STR	40'-10"	982	*A705	1	5	STR	7'-3"	8
A215	5	5	STR	9'-3"	49	*G2	16	6	STR	46'-6"	1118	*A706	1	5	STR	6'-11"	8
A216	5	5	STR	7'-7"	40	*G4	16	6	STR	9'-5"	227	*A707	1	5	STR	6'-7"	7
A217	5	5	STR	6'-0"	32	*K1	18	8	2	42'-3"	2031	*A708	1	5	STR	6'-3"	7
A218	5	5	STR	4'-4"	23	*K2	6	8	1	29'-3"	470	*A709	1	5	STR	6'-0"	7
A219	1	5	STR	4'-1"	5	*K3	6	8	1	33'-7"	539	*A710	1	5	STR	5'-8"	6
A220	1	5	STR	3'-9"	4	*K4	8	4	STR	15'-1"	81	*A711	1	5	STR	5'-4"	6
*A301	5	5	STR	35'-4"	185	*K5	8	4	STR	18'-0"	97	*A712	1	5	STR	5'-0"	6
*A302	5	5	STR	33'-11"	177	*K12	16	6	STR	8'-10"	213	*A713	1	5	STR	4'-8"	5
*A303	5	5	STR	32'-6"	170	*K13	16	6	STR	11'-11"	287	*A714	1	5	STR	4'-4"	5
*A304	5	5	STR	31'-0"	162	*S1	76	5	3	6'-4"	503	*A715	1	5	STR	4'-0"	5
*A305	5	5	STR	29'-7"	155	*S2	54	5	3	3'-11"	221	*A716	1	5	STR	3'-8"	4
*A306	5	5	STR	28'-2"	147	*S3	76	4	4	9'-2"	364	A801	1	5	STR	8'-7"	9
*A307	5	5	STR	26'-9"	140	STAGE II						A802	1	5	STR	8'-3"	9
*A308	5	5	STR	25'-5"	133	BAR	NO.	SIZE	TYPE	LENGTH	WEIGHT	A803	1	5	STR	7'-11"	9
*A309	5	5	STR	24'-0"	126	*A3	169	5	STR	12'-1"	2130	A804	1	5	STR	7'-7"	8
*A310	5	5	STR	22'-7"	118	A4	169	5	STR	12'-1"	2130	EXPANSION JOINT - ALL STAGES					
*A311	5	5	STR	21'-3"	111	STAGE II						BAR	NO.	SIZE	TYPE	LENGTH	WEIGHT
*A312	5	5	STR	19'-11"	104	*A501	1	5	STR	10'-11"	12	*B9	16	4	STR	32'-9"	351
*A313	5	5	STR	18'-6"	97	*A502	1	5	STR	10'-6"	11	B10	18	5	STR	43'-1"	809
*A314	5	5	STR	17'-2"	90	*A503	1	5	STR	10'-2"	11	*K10	4	4	STR	16'-11"	46
*A315	5	5	STR	15'-10"	83	*A504	1	5	STR	9'-10"	11	*K11	6	8	STR	16'-11"	272
*A316	5	5	STR	14'-6"	76	*A505	1	5	STR	9'-6"	10	*K16	4	6	STR	9'-0"	55
*A317	5	5	STR	13'-2"	69	*A506	1	5	STR	9'-2"	10	*K17	4	6	STR	10'-7"	64
*A318	5	5	STR	11'-10"	62	*A507	1	5	STR	8'-10"	10	*S4	10	5	3	7'-8"	80
*A319	5	5	STR	10'-6"	55	*A508	1	5	STR	8'-6"	9	*S5	10	4	4	14'-7"	98
*A320	5	5	STR	9'-3"	49	*A509	1	5	STR	8'-1"	9	BUILD UP - ALL STAGES					
*A321	5	5	STR	7'-11"	42	STAGE II						BAR	NO.	SIZE	TYPE	LENGTH	WEIGHT
DRAWN BY: A. K. VASUDEVAN DATE: 03/2023						STAGE I						*K18	329	5	2	8'-5"	2889
CHECKED BY: S. NATARAJAN DATE: 05/2023						STAGE II						*K19	424	5	6	9'-6"	4203
DESIGN ENGINEER OF RECORD: G.R. COLS DATE: 05/2023												DOCUMENT NOT CONSIDERED FINAL UNLESS ALL SIGNATURES COMPLETED					

SUPERSTRUCTURE BILL OF MATERIAL		
	REINFORCING STEEL (LBS.)	EPOXY COATED REINFORCING STEEL (LBS.)
STAGE I	12,519	24,097
STAGE II	5,106	9,229



SUPERSTRUCTURE REINFORCING STEEL LENGTHS ARE BASED ON THE FOLLOWING MIN. SPLICE LENGTHS					
BAR SIZE	SUPERSTRUCTURE EXCEPT APPROACH SLABS, PARAPET, AND BARRIER RAIL		APPROACH SLABS		PARAPETS AND BARRIER RAILS
	EPOXY COATED	UNCOATED	EPOXY COATED	UNCOATED	EPOXY COATED
#4	1'-11"	1'-7"	1'-11"	1'-7"	2'-6"
#5	2'-5"	2'-0"	2'-5"	2'-0"	3'-1"
#6	2'-10"	2'-5"	3'-7"	2'-5"	3'-8"
#7	4'-2"	2'-9"	-	-	-
#8	4'-9"	3'-2"	-	-	-

PROJECT NO. B-3186 / B-5898
HAYWOOD COUNTY
STATION: 32+21.34 -L LT-
SHEET 2 OF 2



STATE OF NORTH CAROLINA DEPARTMENT OF TRANSPORTATION RALEIGH SUPERSTRUCTURE BILL OF MATERIAL					
REVISIONS					SHEET NO.
NO.	BY:	DATE:	NO.	BY:	DATE:
1			3		
2			4		
					S1-27
					TOTAL SHEETS 43