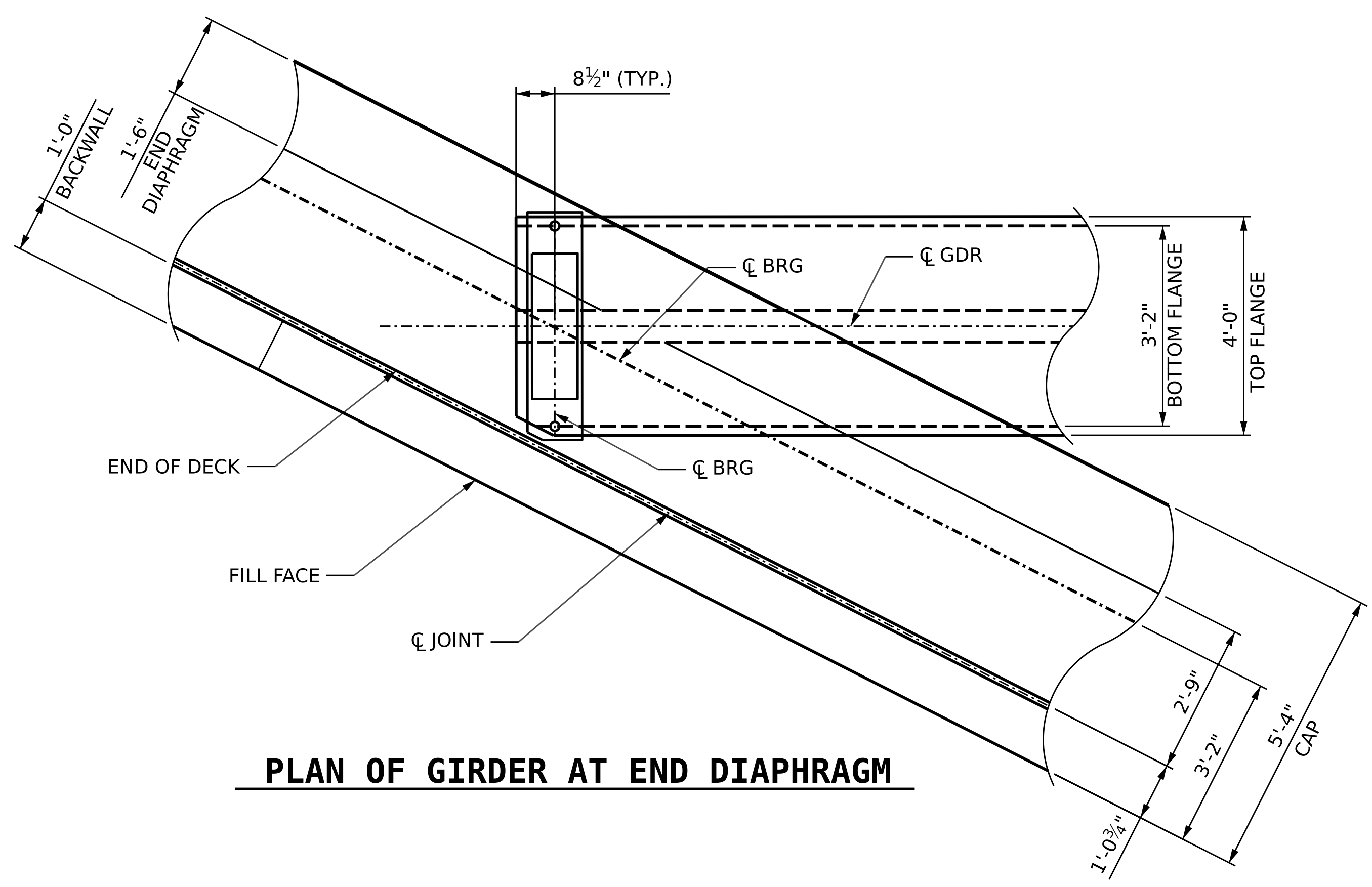


**SECTION THRU END BENT DIAPHRAGMS**

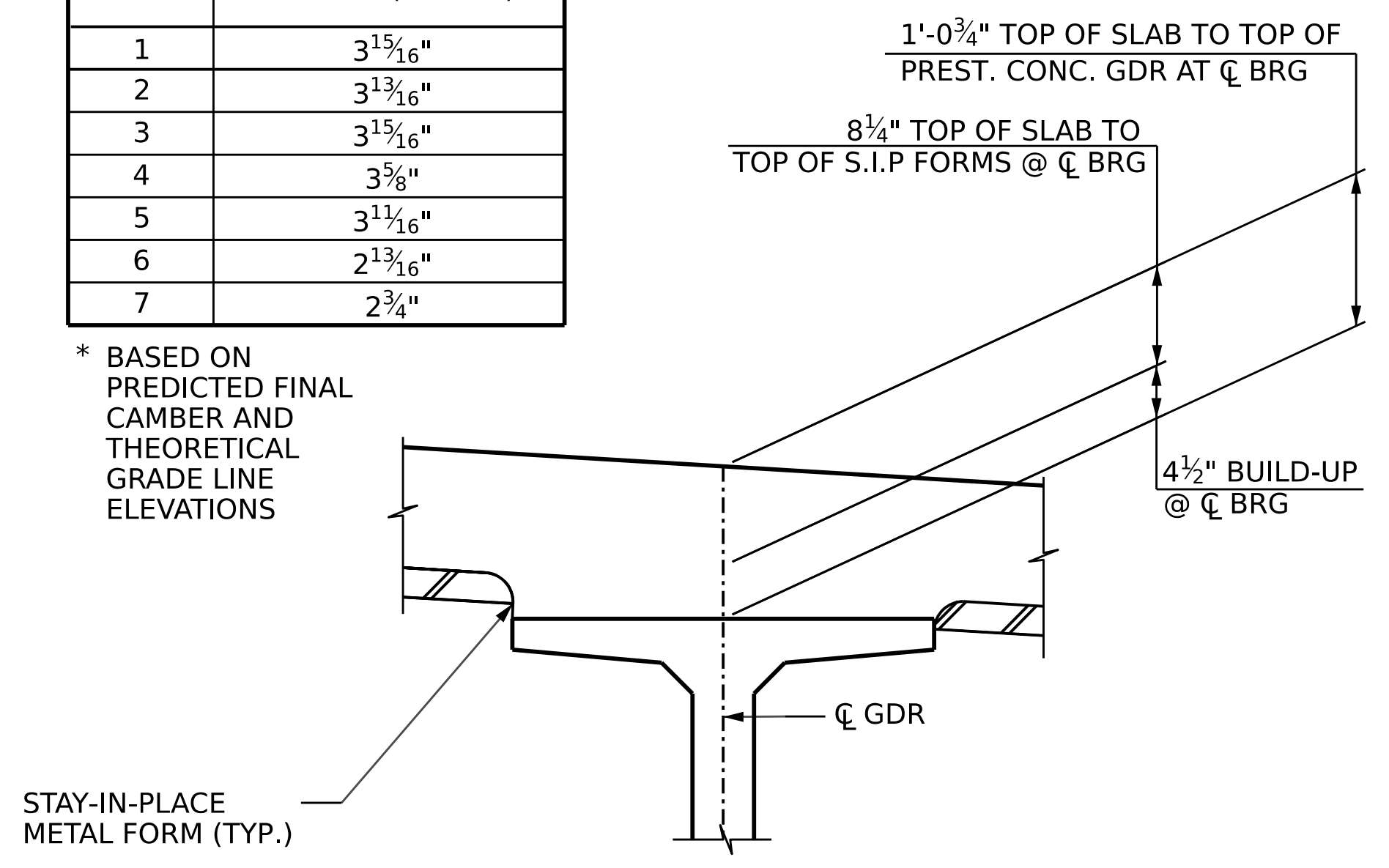


**PLAN OF GIRDER AT END DIAPHRAGM**

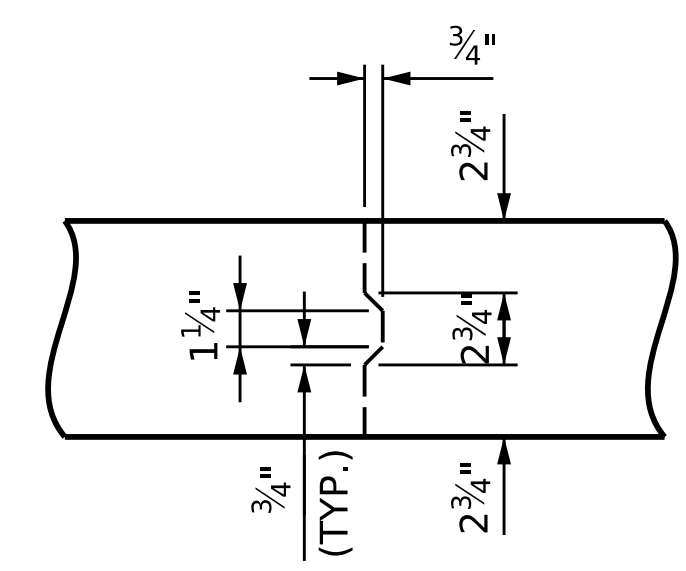
**NOTES**  
 USE THE CONSTRUCTION ELEVATIONS IN CONJUNCTION WITH THIS SHEET TO SET OUTSIDE EDGES OF THE BRIDGE DECK

GIRDER	MAX. MIDSPAN BUILD-UP (INCHES)*
1	3 <sup>15</sup> / <sub>16</sub> "
2	3 <sup>13</sup> / <sub>16</sub> "
3	3 <sup>15</sup> / <sub>16</sub> "
4	3 <sup>5</sup> / <sub>8</sub> "
5	3 <sup>11</sup> / <sub>16</sub> "
6	2 <sup>13</sup> / <sub>16</sub> "
7	2 <sup>3</sup> / <sub>4</sub> "

\* BASED ON PREDICTED FINAL CAMBER AND THEORETICAL GRADE LINE ELEVATIONS



**DETAIL "A"**



**TRANSVERSE CONSTRUCTION JOINT IN SLAB**

PROJECT NO. B-3186 / B-5898  
HAYWOOD COUNTY  
 STATION: 32+21.34 -L LT-  
 SHEET 3 OF 3

**AECOM**  
AECOM TECHNICAL SERVICES OF NC, INC.  
 5438 WADE PARK BOULEVARD, SUITE 200  
 RALEIGH, NC 27607  
 (919) 854-6200 www.aecom.com  
 AECOM License No. F0242

**PROFESSIONAL SEAL**  
 GREGORY R. COLS  
 ENGINEER  
 041343  
 10/18/2023

STATE OF NORTH CAROLINA  
 DEPARTMENT OF TRANSPORTATION  
 RALEIGH

**SUPERSTRUCTURE**  
**TYPICAL SECTION DETAILS**

REVISIONS						SHEET NO.
NO.	BY:	DATE:	NO.	BY:	DATE:	S1-11
1			3			TOTAL SHEETS
2			4			43

DRAWN BY: M.L. CATER DATE: 01/2023  
 CHECKED BY: S. NATARAJAN DATE: 01/2023  
 DESIGN ENGINEER OF RECORD: G.R. COLS DATE: 01/2023

DOCUMENT NOT CONSIDERED FINAL UNLESS ALL SIGNATURES COMPLETED