

NOTES

PROVIDE 1 1/4" HIGH BEAM BOLSTERS UPPER AT 4'-0" CTS. ATOP THE METAL STAY IN PLACE FORMS TO SUPPORT THE BOTTOM MAT OF "A" BARS. WHEN USING REMOVABLE FORMS, PROVIDE CONTINUOUS HIGH CHAIRS FOR METAL DECK (CHCM) AT 4'-0" CTS. WITH A HEIGHT TO SUPPORT THE BOTTOM MAT OF "A" BARS A CLEAR DISTANCE OF 2 1/2" ABOVE THE TOP OF THE REMOVABLE FORM.

LONGITUDINAL STEEL MAY BE SHIFTED SLIGHTLY, AS NECESSARY, TO AVOID INTERFERENCE WITH STIRRUPS IN PRESTRESSED CONCRETE GIRDERS.

PREVIOUSLY CAST CONCRETE IN A CONTINUOUS UNIT SHALL HAVE ATTAINED A MINIMUM COMPRESSIVE STRENGTH OF 3,000 PSI BEFORE ADDITIONAL CONCRETE IS CAST IN THE UNIT.

DOWELS SHALL BE PLACED IN THE SAME HORIZONTAL PLANE AS THE TOP AND BOTTOM SLAB REINFORCING STEEL.

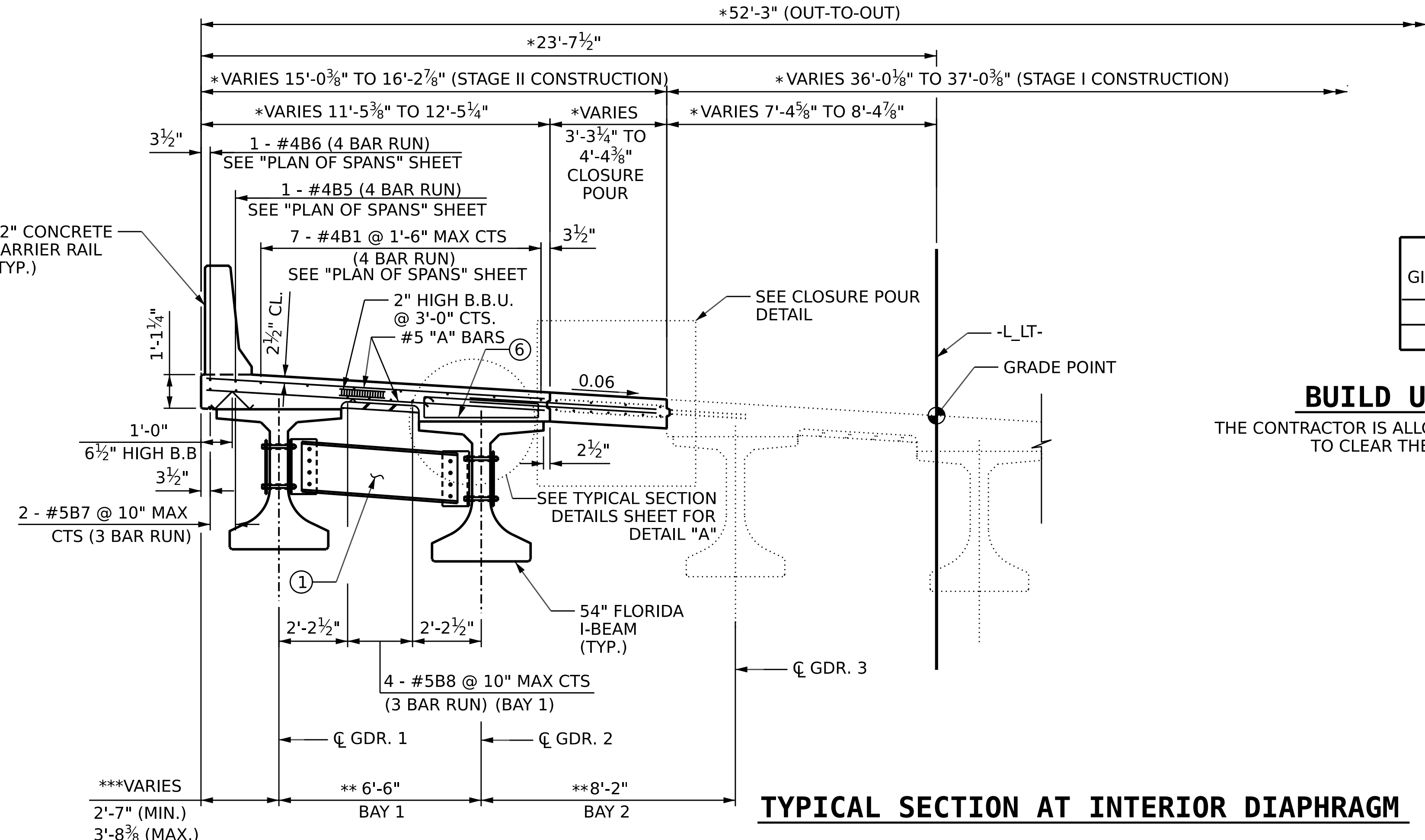
SEE CONSTRUCTION SEQUENCE SHEETS FOR LOCATION OF TEMPORARY PORTABLE CONCRETE BARRIER (ANCHORED)

SEE "FRAMING PLAN" SHEET FOR LOCATIONS OF STEEL INTERMEDIATE DIAPHRAGMS.

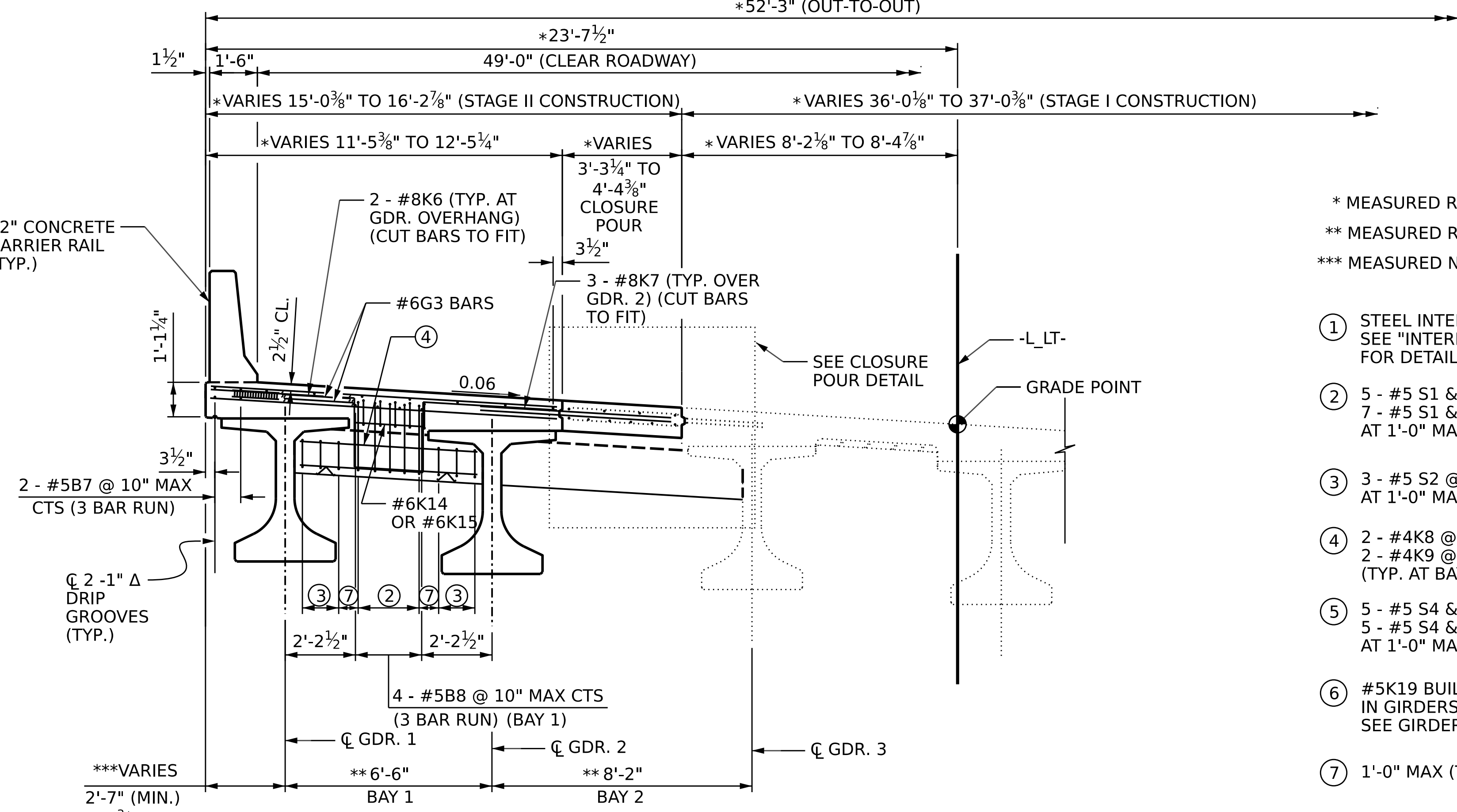
GIRDER	TOTAL NO OF #5K19 BARS
1	101
2	103

BUILD UP REINFORCEMENT TABLE

THE CONTRACTOR IS ALLOWED TO PLACE BUILD-UP BAR DIAGONALLY IF NEEDED TO CLEAR THE REINFORCEMENT AT TOP OF BRIDGE DECK

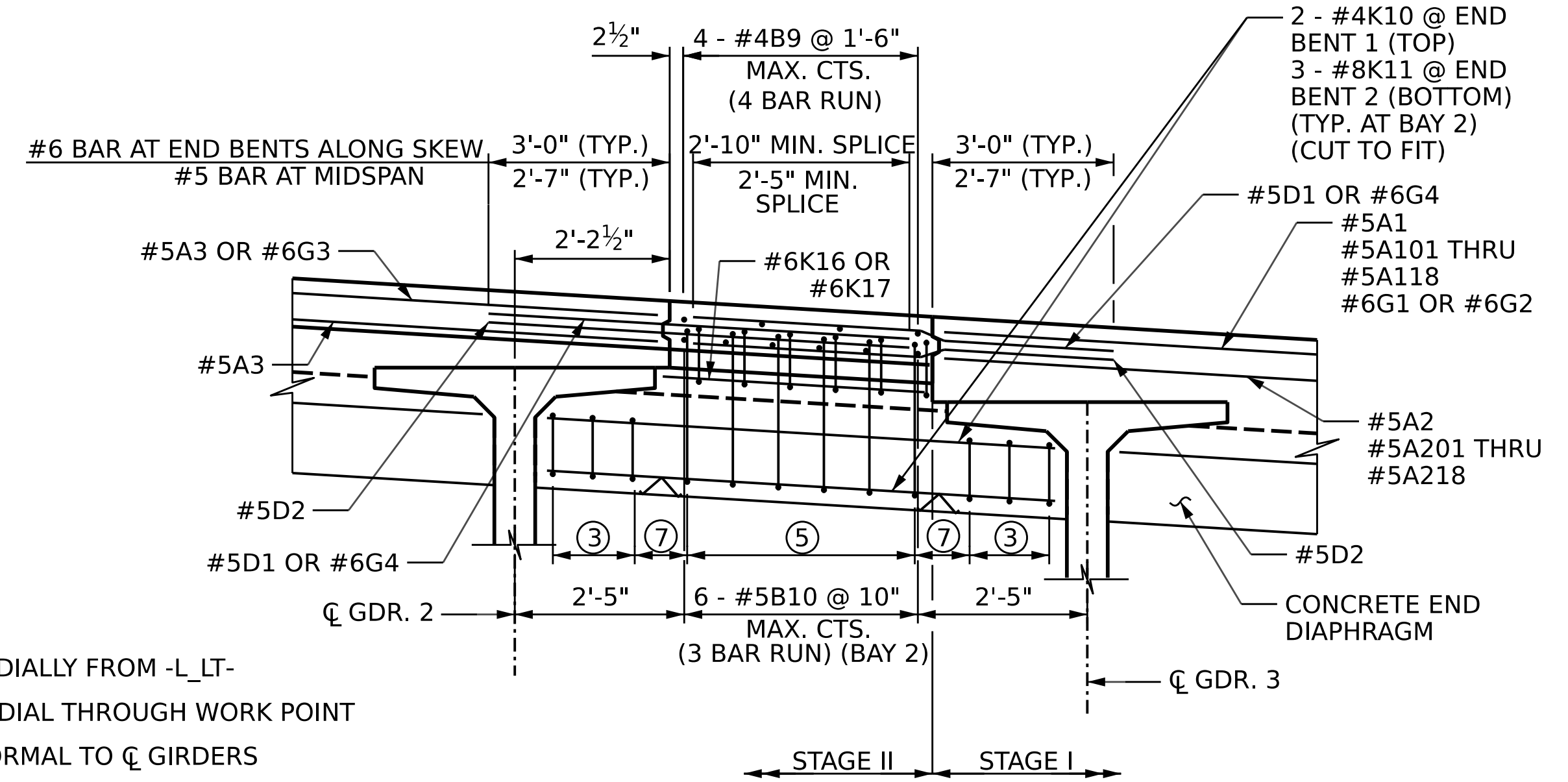


TYPICAL SECTION AT INTERIOR DIAPHRAGM



TYPICAL SECTION AT END DIAPHRAGM

END BENT 1 SHOWN, END BENT 2 SIMILAR



CLOSURE POUR DETAIL

DECK CLOSURE POUR DETAIL AT END BENTS

- * MEASURED RADIALLY FROM -L_LT-
- ** MEASURED RADIAL THROUGH WORK POINT
- *** MEASURED NORMAL TO C GIRDERS

- ① STEEL INTERMEDIATE DIAPHRAGM SEE "INTERMEDIATE STEEL DIAPHRAGM SHEET" FOR DETAILS.
- ② 5 - #5 S1 & S3 @ END BENT 1 (BAY 1) & 7 - #5 S1 & S3 @ END BENT 2 (BAY 1) AT 1'-0" MAX. CTS
- ③ 3 - #5 S2 @ END BENTS 1 & 2 (TYP. BAYS 1 & 2) AT 1'-0" MAX. CTS
- ④ 2 - #4K8 @ END BENT 1
2 - #4K9 @ END BENT 2 (TYP. AT BAY 1)
- ⑤ 5 - #5 S4 & S5 @ END BENT 1 (CLOSURE POUR) & 5 - #5 S4 & S5 @ END BENT 2 (CLOSURE POUR) AT 1'-0" MAX. CTS
- ⑥ #5K19 BUILD UP REINFORCEMENT. PLACE WITH S8 BARS IN GIRDERS. TYPICAL AT GIRDERS 1 & 2. SEE TABLE FOR NUMBER. SEE GIRDER DETAILS SHEET FOR LOCATIONS.
- ⑦ 1'-0" MAX (TYP.)

PROJECT NO. **B-3186 / B-5898**

HAYWOOD COUNTY

STATION: **32+21.34 -L_LT-**

SHEET 2 OF 3

AECOM
AECOM TECHNICAL SERVICES OF NC, INC.
 5430 WADE PARK BOULEVARD, SUITE 200
 RALEIGH, NC 27607
 (919) 854-6200 www.aecom.com
 AECOM License No. F0242

PROFESSIONAL ENGINEER
SEAL 041343
 GREGORY R. COLS

10/18/2023

STATE OF NORTH CAROLINA
 DEPARTMENT OF TRANSPORTATION
 RALEIGH

SUPERSTRUCTURE

TYPICAL SECTIONS
 STAGE II

REVISIONS						SHEET NO.
NO.	BY:	DATE:	NO.	BY:	DATE:	S1-10
1			3			TOTAL SHEETS
2			4			43

DRAWN BY: A.K. VASUDEVAN DATE: 01/2023
 CHECKED BY: S. NATARAJAN DATE: 01/2023
 DESIGN ENGINEER OF RECORD: G.R. COLS DATE: 01/2023

DOCUMENT NOT CONSIDERED FINAL UNLESS ALL SIGNATURES COMPLETED