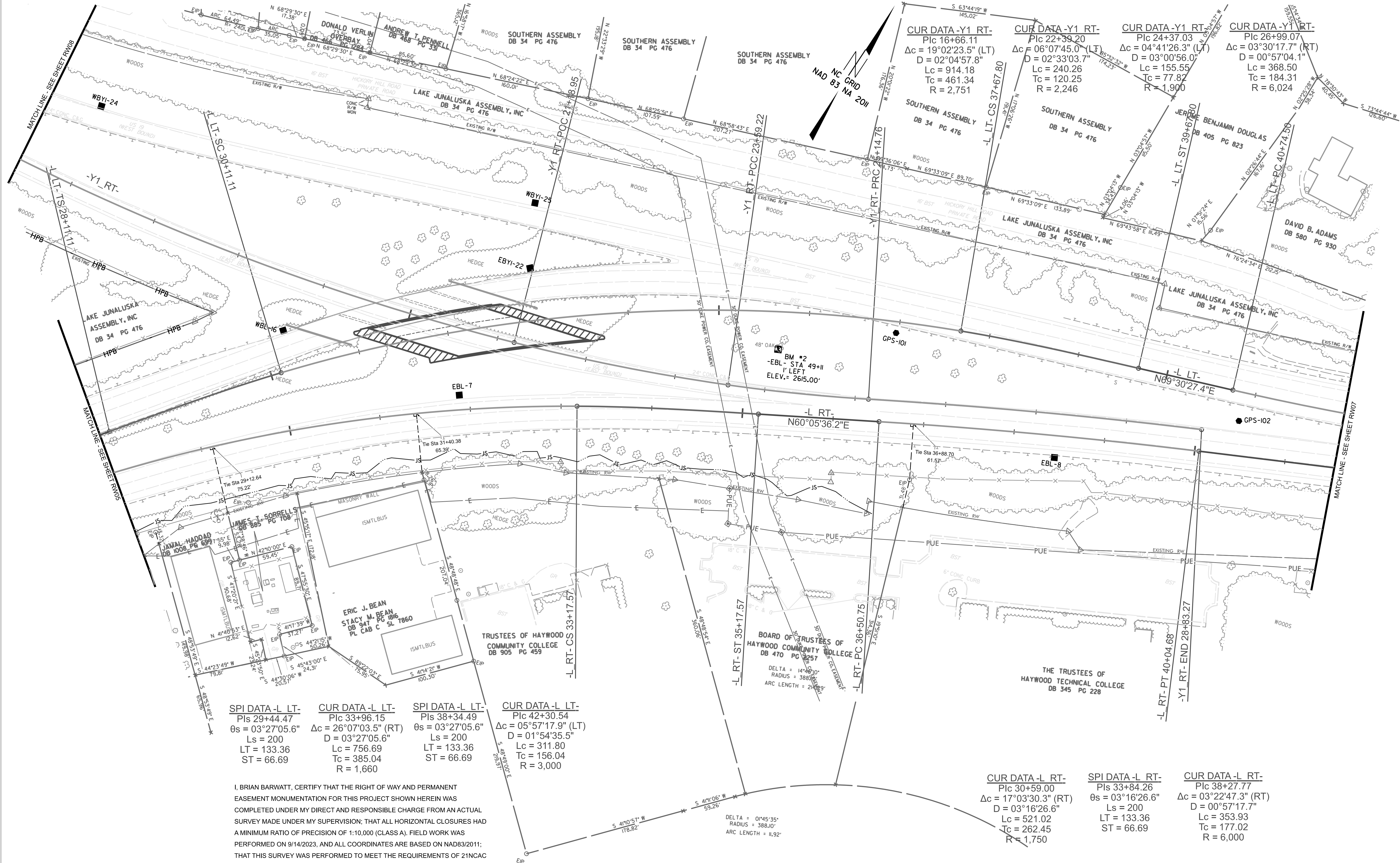
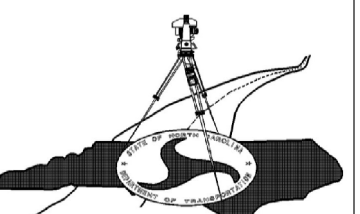


TIP PROJECT: B5898-B3186

County: Haywood



SPI DATA -L LT-
Pls 29+44.47
$\theta_s = 03^\circ 27' 05.6''$
Ls = 200
LT = 133.36
ST = 66.69

CUR DATA -L LT-
Plc 33+96.15
$\Delta c = 26^\circ 07' 03.5''$ (RT)
D = $03^\circ 27' 05.6''$
Lc = 756.69
Tc = 385.04
R = 1,660

SPI DATA -L LT-
Pls 38+34.49
$\theta_s = 03^\circ 27' 05.6''$
Ls = 200
LT = 133.36
ST = 66.69

CUR DATA -L LT-
Plc 42+30.54
$\Delta c = 05^\circ 57' 17.9''$ (LT)
D = $01^\circ 54' 35.5''$
Lc = 311.80
Tc = 156.04
R = 3,000

CUR DATA -L RT-
Plc 30+59.00
$\Delta c = 17^\circ 03' 30.3''$ (RT)
D = $03^\circ 16' 26.6''$
Lc = 521.02
Tc = 262.45
R = 1,750

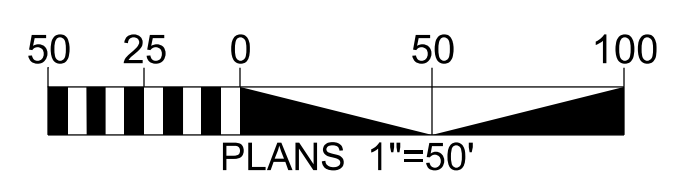
SPI DATA -L RT-
Pls 33+84.26
$\theta_s = 03^\circ 16' 26.6''$
Ls = 200
LT = 133.36
ST = 66.69

CUR DATA -L RT-
Plc 38+27.77
$\Delta c = 03^\circ 22' 47.3''$ (RT)
D = $00^\circ 57' 17.7''$
Lc = 353.93
Tc = 177.02
R = 6,000

I, BRIAN BARWATT, CERTIFY THAT THE RIGHT OF WAY AND PERMANENT EASEMENT MONUMENTATION FOR THIS PROJECT SHOWN HEREIN WAS COMPLETED UNDER MY DIRECT AND RESPONSIBLE CHARGE FROM AN ACTUAL SURVEY MADE UNDER MY SUPERVISION; THAT ALL HORIZONTAL CLOSURES HAD A MINIMUM RATIO OF PRECISION OF 1:10,000 (CLASS A). FIELD WORK WAS PERFORMED ON 9/14/2023, AND ALL COORDINATES ARE BASED ON NAD83/2011; THAT THIS SURVEY WAS PERFORMED TO MEET THE REQUIREMENTS OF 21NCAC 56.1600 AS APPLICABLE.

THIS 14TH DAY OF SEPTEMBER, 2023.

DocuSigned by:
Brian Barwatt
A9355F848A9ACE
PROFESSIONAL LAND SURVEYOR L-4727



NOTES:

1. PROJECT CONTROL WAS ESTABLISHED USING GNSS, THE GLOBAL NAVIGATION SATELLITE SYSTEM.
2. THE PROPOSED ALIGNMENT CONTROL DATA FOR THIS PROJECT HAS BEEN COMPILED FROM VARIOUS SOURCES. IF FURTHER INFORMATION REGARDING PROJECT CONTROL IS NEEDED, PLEASE CONTACT THE LOCATION AND SURVEYS UNIT.