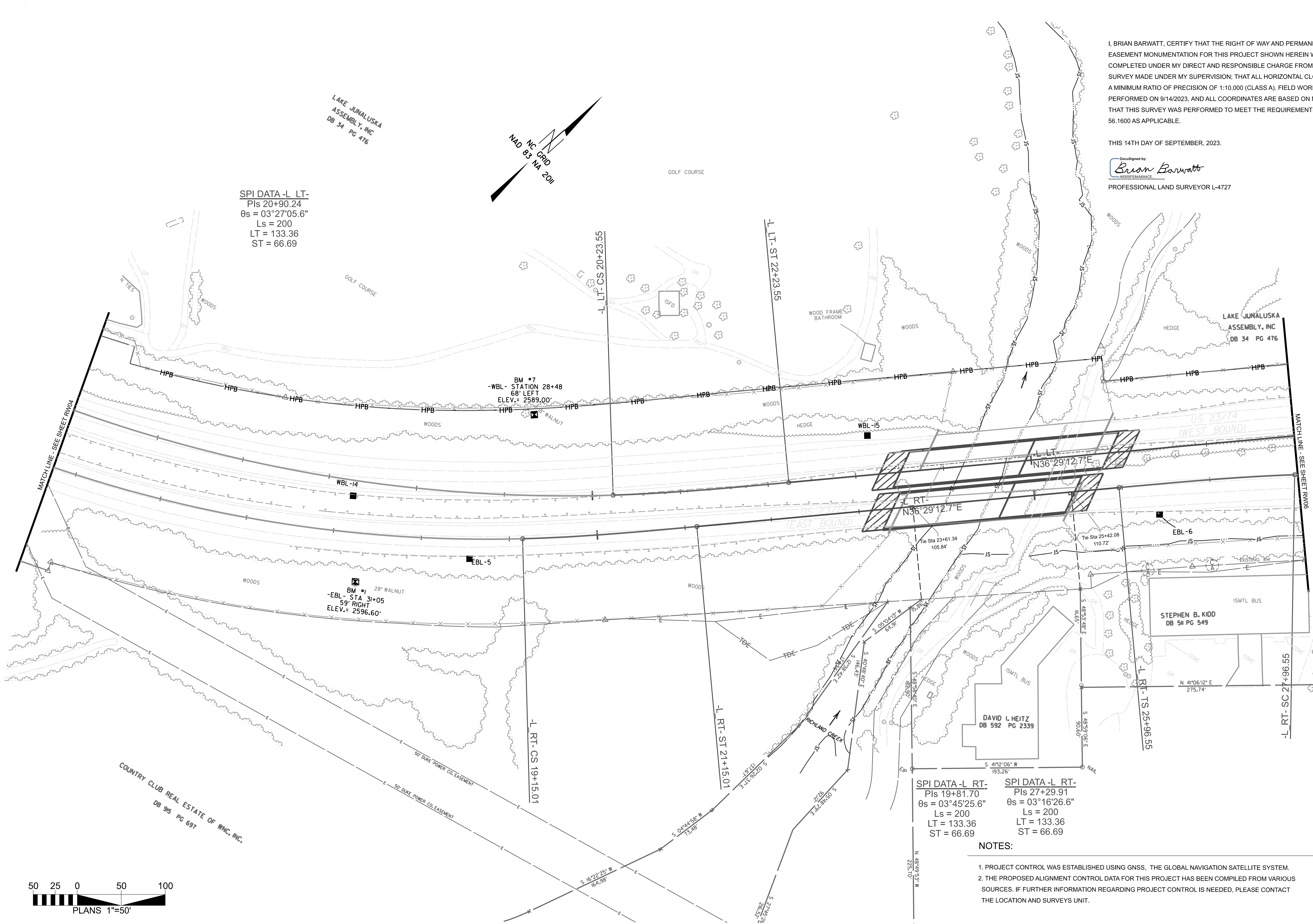


I, BRIAN BARWATT, CERTIFY THAT THE RIGHT OF WAY AND PERMANENT EASEMENT MONUMENTATION FOR THIS PROJECT SHOWN HEREIN WAS COMPLETED UNDER MY DIRECT AND RESPONSIBLE CHARGE FROM AN ACTUAL SURVEY MADE UNDER MY SUPERVISION; THAT ALL HORIZONTAL CLOSURES HAD A MINIMUM RATIO OF PRECISION OF 1:10,000 (CLASS A). FIELD WORK WAS PERFORMED ON 9/14/2023, AND ALL COORDINATES ARE BASED ON NAD83/2011; THAT THIS SURVEY WAS PERFORMED TO MEET THE REQUIREMENTS OF 21NCAC 56.1600 AS APPLICABLE.

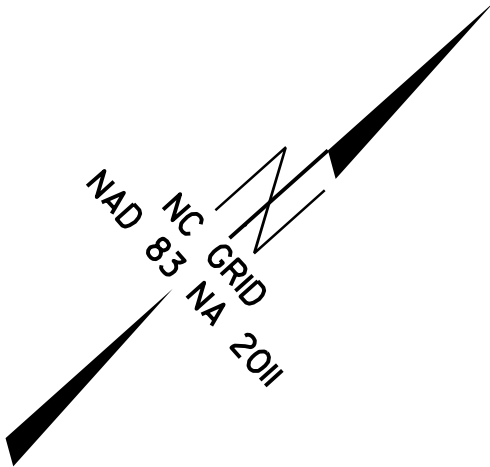
THIS 14TH DAY OF SEPTEMBER, 2023.

Designed by:
Brian Barwatt
PROFESSIONAL LAND SURVEYOR L-4727



SPI DATA-L LT-
Pls 20+90.24
θs = 03°27'05.6"
Ls = 200
LT = 133.36
ST = 66.69

LAKE JUNALUSKA
ASSEMBLY, INC
DB 34 PG 476



GOLF COURSE

LAKE JUNALUSKA
ASSEMBLY, INC
DB 34 PG 476

STEPHEN B. KIDD
DB 51 PG 549

DAVID L. HEITZ
DB 592 PG 2339

SPI DATA-L RT-
Pls 19+81.70
θs = 03°45'25.6"
Ls = 200
LT = 133.36
ST = 66.69

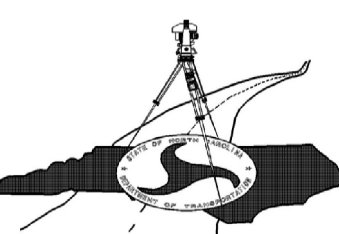
SPI DATA-L RT-
Pls 27+29.91
θs = 03°16'26.6"
Ls = 200
LT = 133.36
ST = 66.69

NOTES:

- 1. PROJECT CONTROL WAS ESTABLISHED USING GNSS, THE GLOBAL NAVIGATION SATELLITE SYSTEM.
- 2. THE PROPOSED ALIGNMENT CONTROL DATA FOR THIS PROJECT HAS BEEN COMPILED FROM VARIOUS SOURCES. IF FURTHER INFORMATION REGARDING PROJECT CONTROL IS NEEDED, PLEASE CONTACT THE LOCATION AND SURVEYS UNIT.

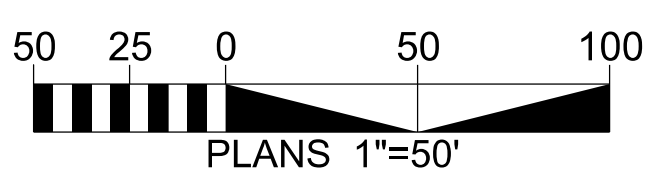
TIP PROJECT: B5898-B3186
County: Haywood

PREPARED FOR



LOCATION AND SURVEYS UNIT

PREPARED BY
LOCATION AND SURVEYS
DIVISION 14
122 BONNIE LANE
SYLVA, NC 28779



COUNTRY CLUB REAL ESTATE OF WNC, INC.
DB 95 PG 697