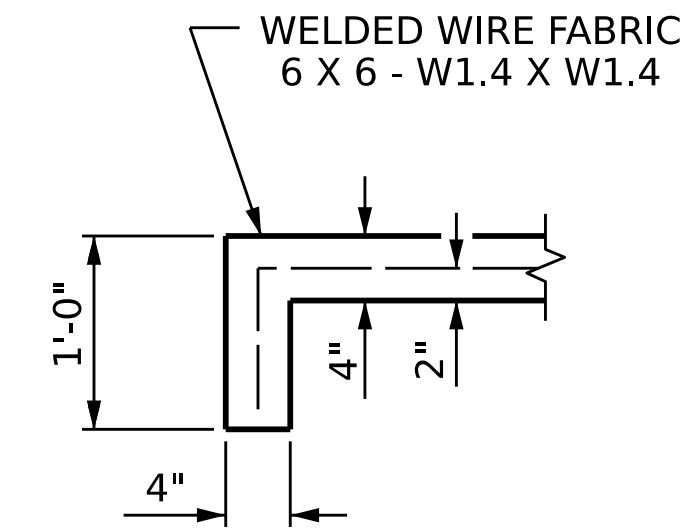


**PLAN**

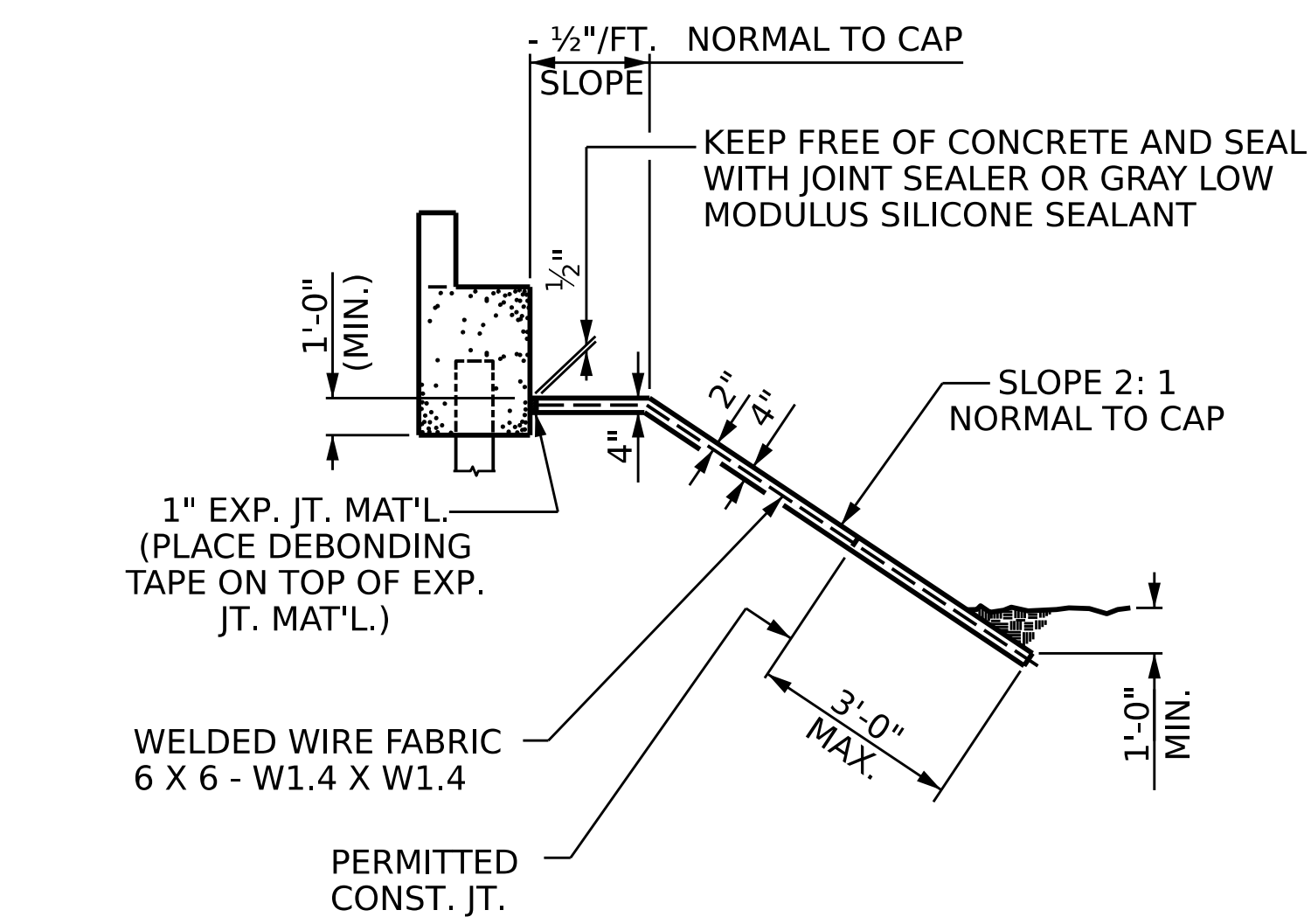
**NOTES:**  
 SLOPE PROTECTION SHALL BE PLACED UNDER THE ENDS OF THE BRIDGE AS SHOWN IN THE DETAILS. STRAIGHT EDGING WILL NOT BE REQUIRED UNLESS, IN THE OPINION OF THE ENGINEER, VISUAL INSPECTION INDICATES A NEED FOR IT. MEASUREMENT AND PAYMENT SHALL BE AS PRESCRIBED IN SECTION 462 OF THE STANDARD SPECIFICATIONS. FOR BERM WIDTH, SEE GENERAL DRAWING.  
 SLOPE PROTECTION SHALL CONSIST OF 4" Poured-in-place concrete paving as shown in the details on this sheet. CONCRETE SHALL BE CLASS "B". THE CONCRETE SURFACE SHALL BE FLOATED WITH A WOODEN FLOAT AND FINISHED. WELDED WIRE FABRIC REINFORCING SHALL BE 6 X 6 - W1.4 X W1.4, 60" WIDE. SLOPE PROTECTION SHALL BE POURED IN 5' STRIPS AS SHOWN IN THE "POURING DETAIL" WITH 2'-0" LONG #4 BARS PLACED ALONG THE SLOPE BETWEEN STRIPS AT 1'-6" MAXIMUM SPACING. SLOPE PROTECTION MAY BE POURED IN ALTERNATE 4' AND 5' STRIPS AS SHOWN IN THE "OPTIONAL POURING DETAIL" WITH ADJACENT RUNS OF WELDED WIRE FABRIC LAPPING AT LEAST 6". THE COST OF THE WELDED WIRE FABRIC AND #4 BARS, IF USED, SHALL BE INCLUDED IN THE CONTRACT UNIT PRICE BID PER SQUARE YARD FOR SLOPE PROTECTION.

BRIDGE @ STA. 23+56.64-L-	4" SLOPE PROTECTION SQ. YD.	* WELDED WIRE FABRIC 60 INCHES WIDE APPROX. L.F.
END BENT 1	1,160	2,090
END BENT 2	450	810

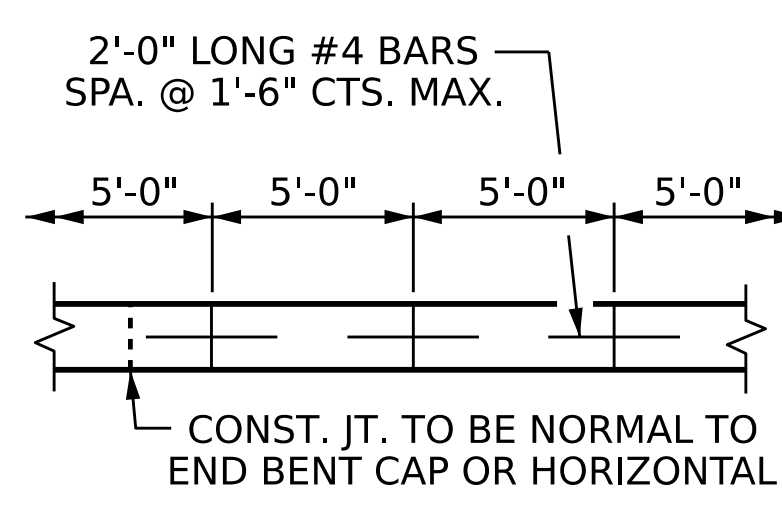
\* QUANTITY SHOWN IS BASED ON 5' POURS.



**SECTION A-A**

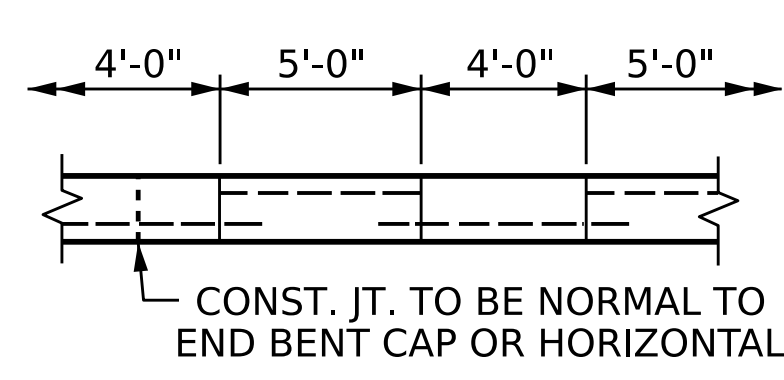


**SECTION ALONG -L- WHEN DITCH IS NOT PROVIDED**



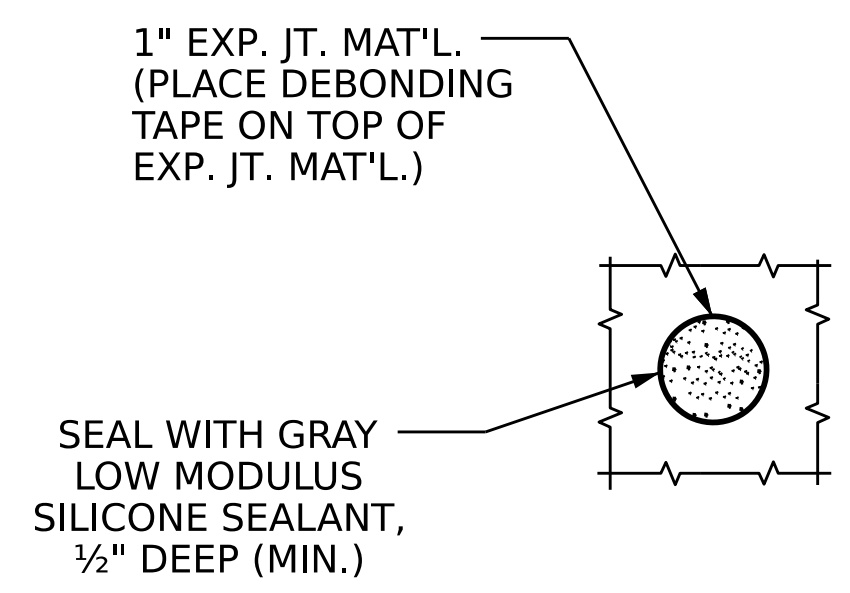
STRIP WIDTHS MAY VARY IN CURVED PORTION.

**POURING DETAIL**



POUR A 4'-0" STRIP FIRST. STRIP WIDTHS MAY VARY IN CURVED PORTION.

**OPTIONAL POURING DETAIL**



PLAN WHERE CONCRETE SLOPE PROTECTION MUST BE PLACED AROUND A BENT PILE

**DETAILS FOR SLOPE PROTECTION**

PROJECT NO. **B-5981**  
 DUPLIN COUNTY  
 STATION: **23+56.64 -L-**

STATE OF NORTH CAROLINA  
 DEPARTMENT OF TRANSPORTATION  
 RALEIGH

**4" SLOPE PROTECTION DETAILS**



DocuSigned by:  
 William C. Smith  
 6A2A8283F8241D  
 10/24/2023

REVISIONS				SHEET NO.
NO.	BY:	DATE:	NO.	DATE:
1			3	
2			4	

TOTAL SHEETS: 43

DRAWN BY: S. T. SANDOR DATE: 08/2022  
 CHECKED BY: W. C. SMITH DATE: 08/2022

DOCUMENT NOT CONSIDERED FINAL UNLESS ALL SIGNATURES COMPLETED