

NOTES

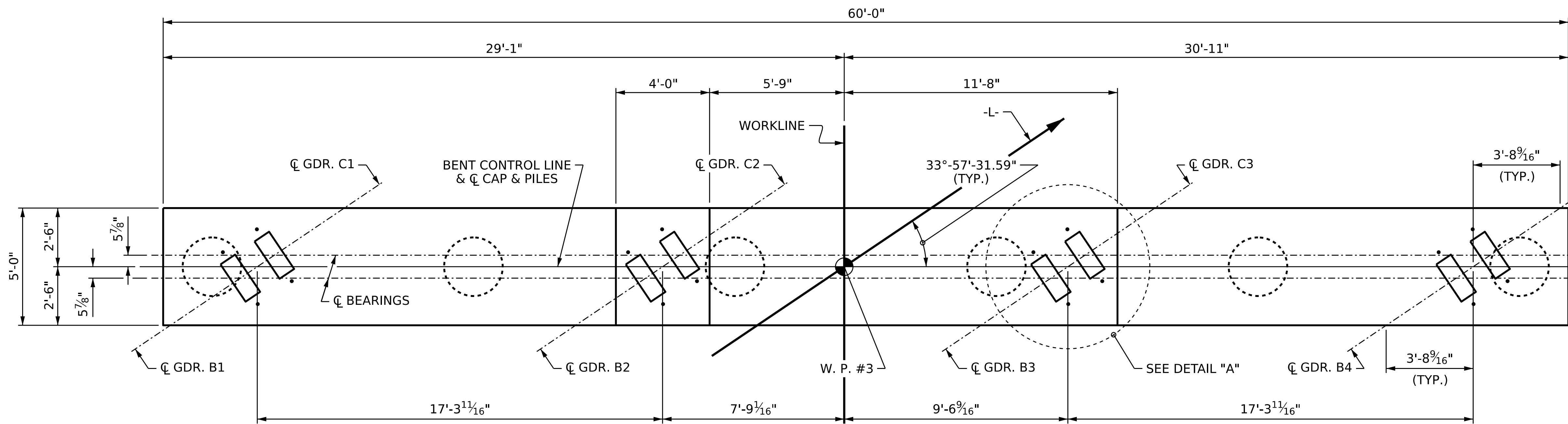
STIRRUPS IN CAP MAY BE SHIFTED AS NECESSARY TO CLEAR ANCHOR BOLTS.

"U" BARS IN ENDS OF CAP MAY BE SHIFTED SLIGHTLY AS NECESSARY TO CLEAR "B" BARS.

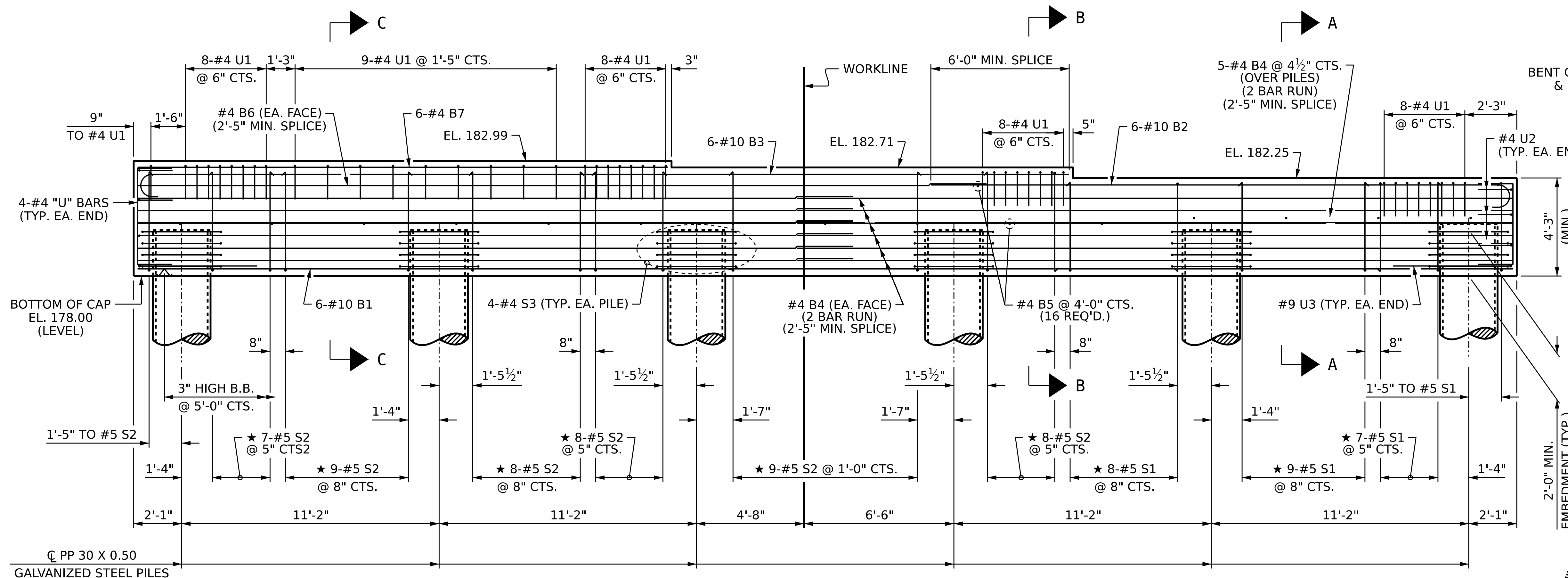
FOR PIPE PILE SPLICE DETAILS, SEE SHEET S1-37.

FOR ADDITIONAL REINFORCING STEEL IN PP 30 X 0.50 GALVANIZED STEEL PILES, SEE SHEET S1-37.

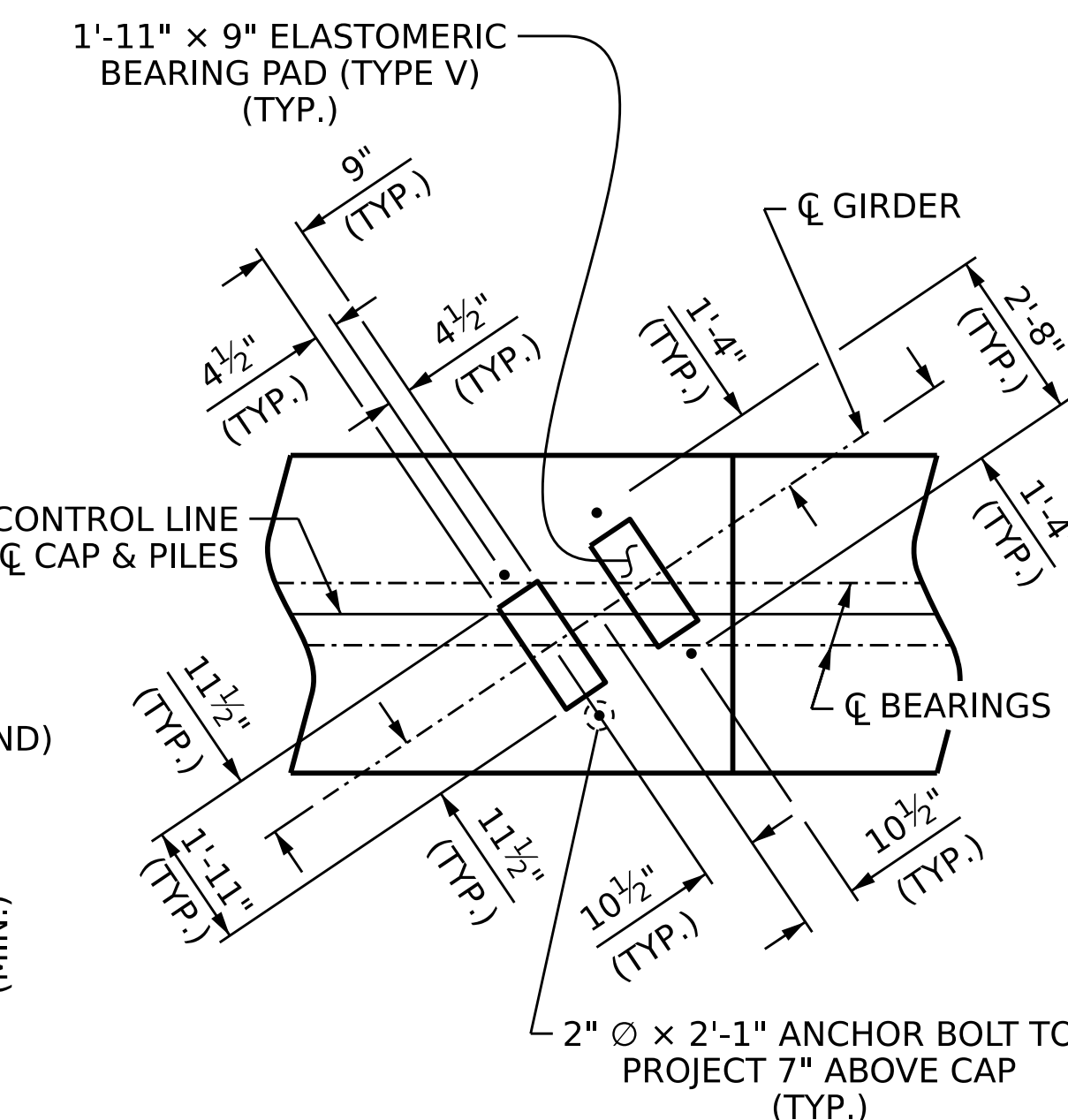
GALVANIZE THE TOP OF EACH INTERIOR BENT PILE A MINIMUM OF 45 FEET. GALVANIZE IN ACCORDANCE WITH SECTION 1076 OF THE STANDARD SPECIFICATIONS.



PLAN



ELEVATION



DETAIL "A"
(TYP. EA. GIRDER)

PROJECT NO. **B-5981**
DUPLIN COUNTY
 STATION: **23+56.64 -L-**

SHEET 1 OF 2

STATE OF NORTH CAROLINA
 DEPARTMENT OF TRANSPORTATION
 RALEIGH

SUBSTRUCTURE

BENT 2



DocuSigned by:
 Paul D. Bryant
 71C2194E2944E

10/24/2023

DOCUMENT NOT CONSIDERED
 FINAL UNLESS ALL
 SIGNATURES COMPLETED

REVISIONS		REVISIONS		REVISIONS		REVISIONS	
NO.	BY:	DATE:	NO.	BY:	DATE:	NO.	BY:
1			3			4	
2							

SHEET NO.
S1-35
 TOTAL SHEETS
43

DRAWN BY : P. K. NEWTON DATE : 10/18/22
 CHECKED BY : D. R. SHACKELFORD DATE : 2/1/23
 DESIGN ENGINEER OF RECORD : P. D. BRYANT DATE : 2/6/23