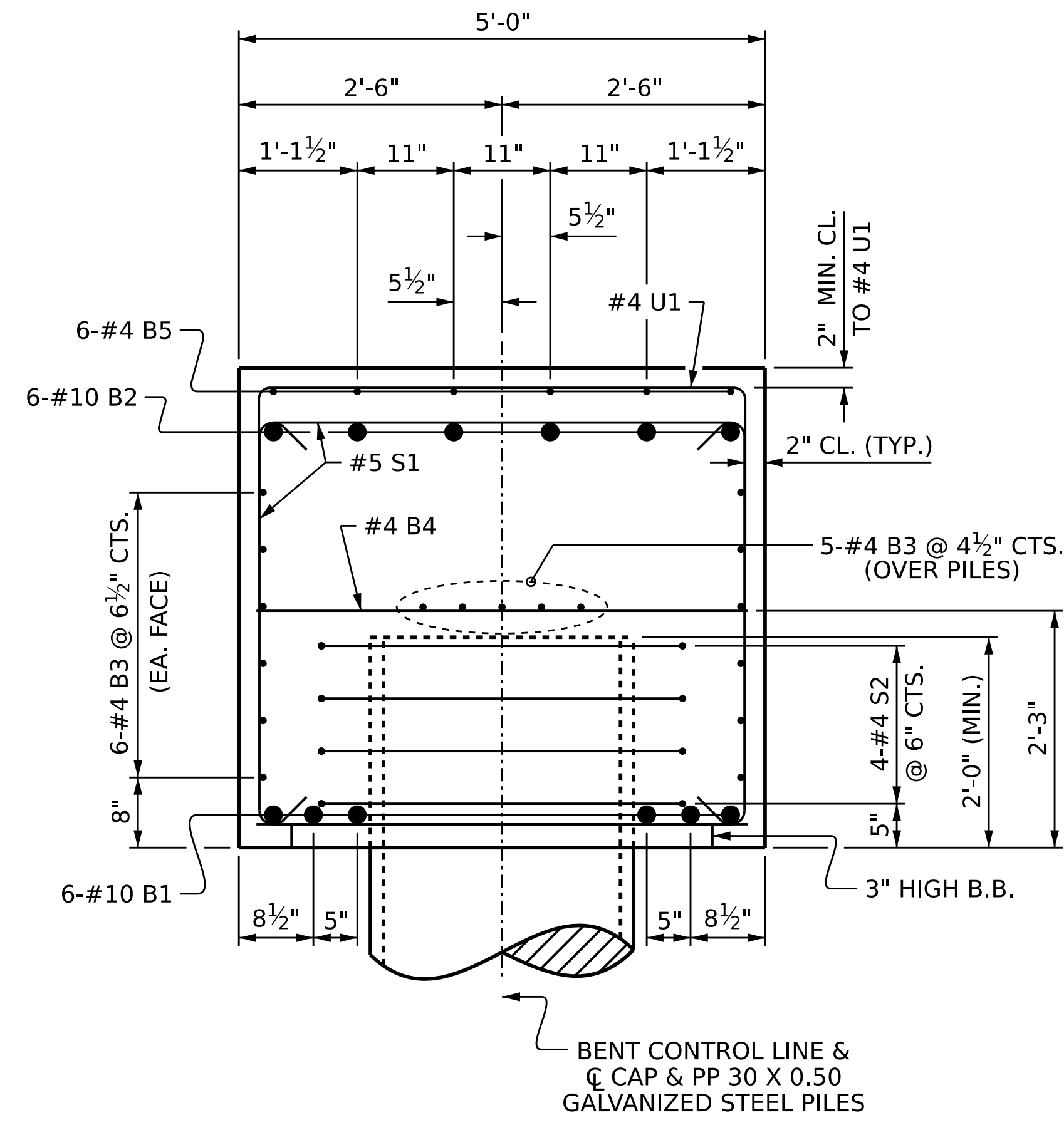
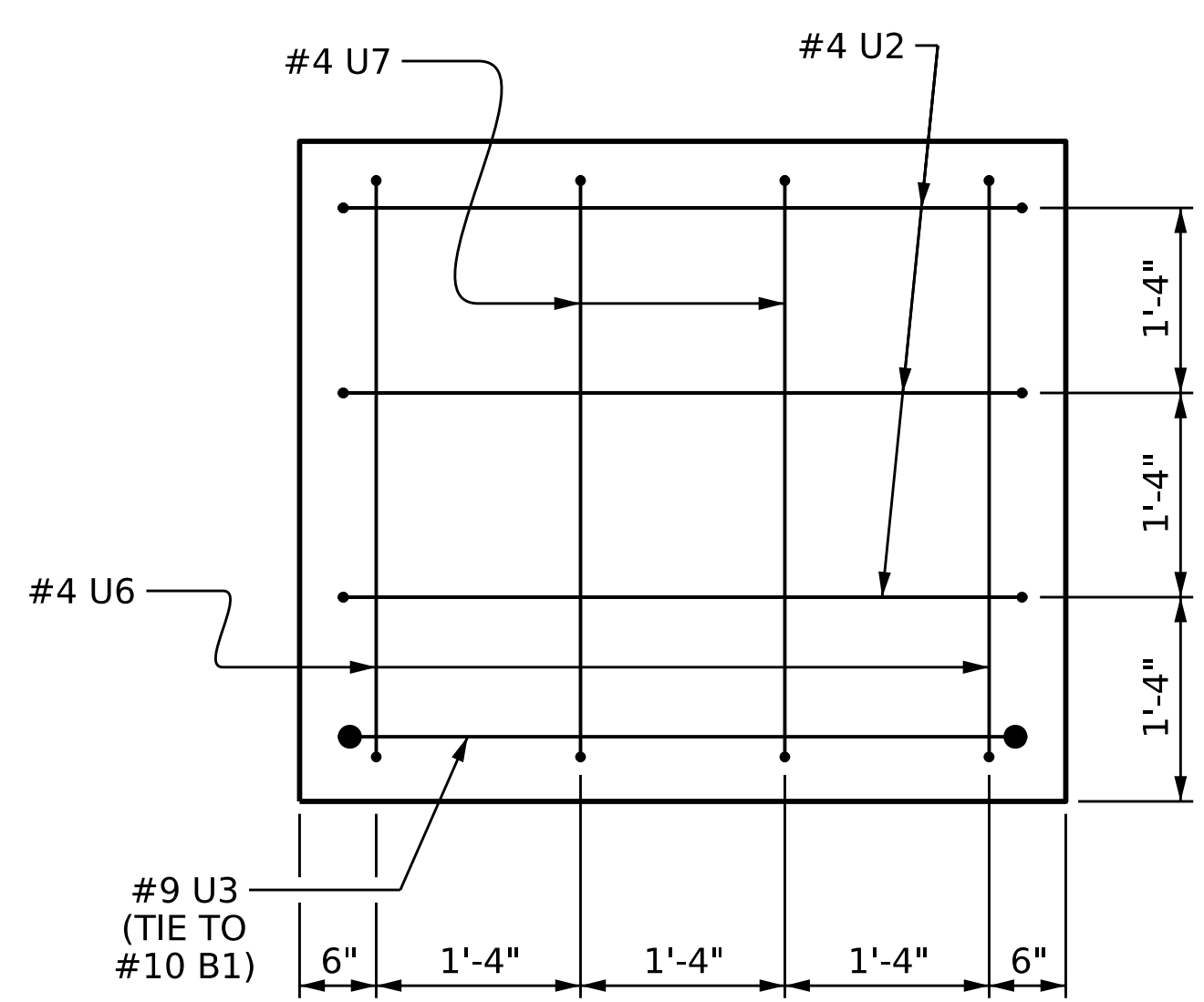


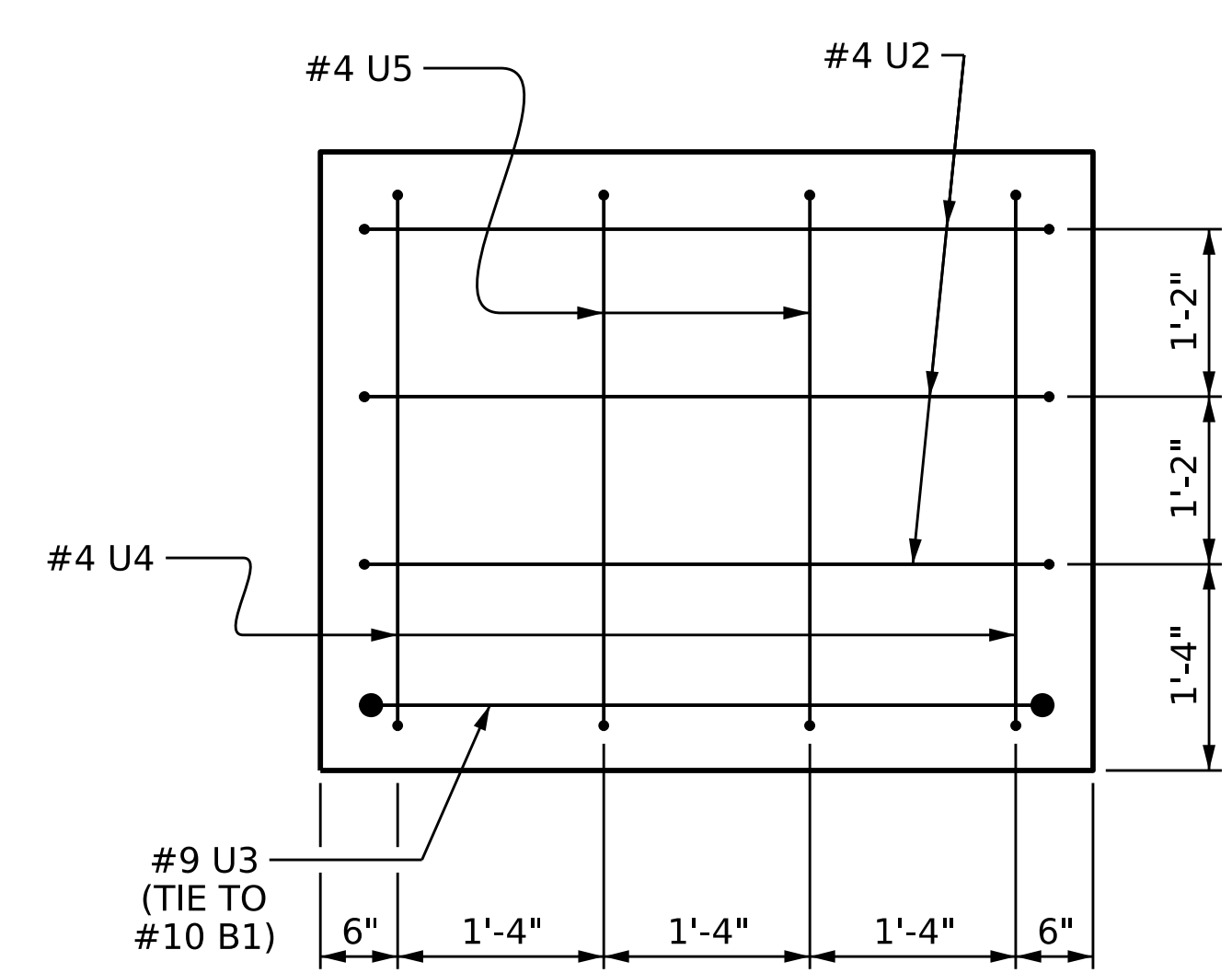
**SECTION A-A**



**SECTION B-B**

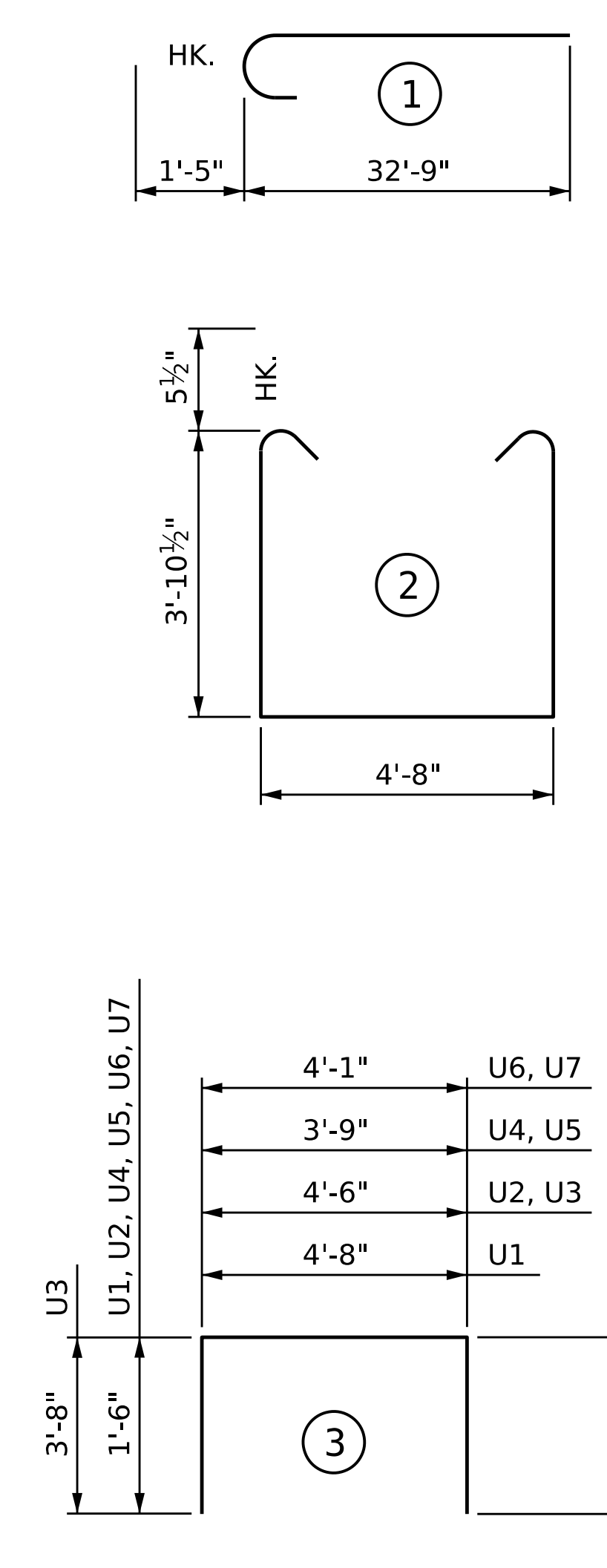


**LEFT END VIEW**



**RIGHT END VIEW**

**BAR TYPES**



**BILL OF MATERIAL**

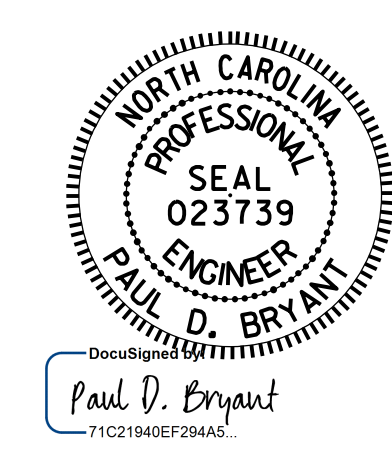
BAR	NO.	SIZE	TYPE	LENGTH	WEIGHT
B1	6	#10	STR	59'-8"	1,540
B2	12	#10	1	34'-2"	1,764
B3	34	#4	STR	31'-1"	706
B4	15	#4	STR	4'-8"	47
B5	12	#4	STR	21'-5"	172
S1	75	#5	2	13'-4"	1043
S2	24	#4	4	12'-3"	196
U1	51	#4	3	7'-8"	261
U2	6	#4	3	7'-6"	30
U3	2	#9	3	11'-10"	80
U4	2	#4	3	6'-9"	9
U5	2	#4	3	5'-11"	8
U6	2	#4	3	7'-1"	10
U7	2	#4	3	6'-3"	8

REINFORCING STEEL 5,874 LBS.  
 CLASS A CONCRETE BREAKDOWN:  
 TOTAL CLASS A CONCRETE ▲ 47.5 C. Y.  
 ▲ CONCRETE DISPLACED BY THE PP 30 X 0.50 GALVANIZED STEEL PILES HAS BEEN DEDUCTED FROM THE CONCRETE QUANTITY.

ALL BAR DIMENSIONS ARE OUT TO OUT.

DRAWN BY : P. K. NEWTON DATE : 10/21/22  
 CHECKED BY : D. R. SHACKELFORD DATE : 2/1/23  
 DESIGN ENGINEER OF RECORD : P. D. BRYANT DATE : 2/6/23

DOCUMENT NOT CONSIDERED FINAL UNLESS ALL SIGNATURES COMPLETED



PROJECT NO. **B-5981**  
**DUPLIN** COUNTY  
 STATION: **23+56.64 -L-**  
 SHEET 2 OF 2

STATE OF NORTH CAROLINA  
 DEPARTMENT OF TRANSPORTATION  
 RALEIGH  
**SUBSTRUCTURE**  
**BENT 1**

REVISIONS				SHEET NO.
NO.	BY:	DATE:	NO.	DATE:
1			3	
2			4	

TOTAL SHEETS 43