

NOTES

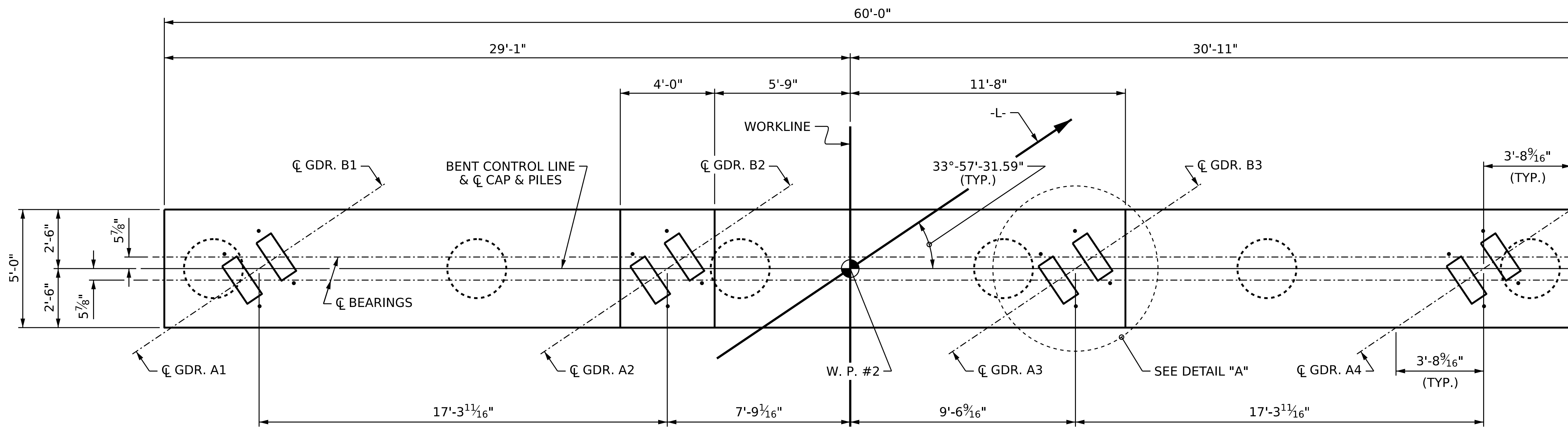
STIRRUPS IN CAP MAY BE SHIFTED AS NECESSARY TO CLEAR ANCHOR BOLTS.

"U" BARS IN ENDS OF CAP MAY BE SHIFTED SLIGHTLY AS NECESSARY TO CLEAR "B" BARS.

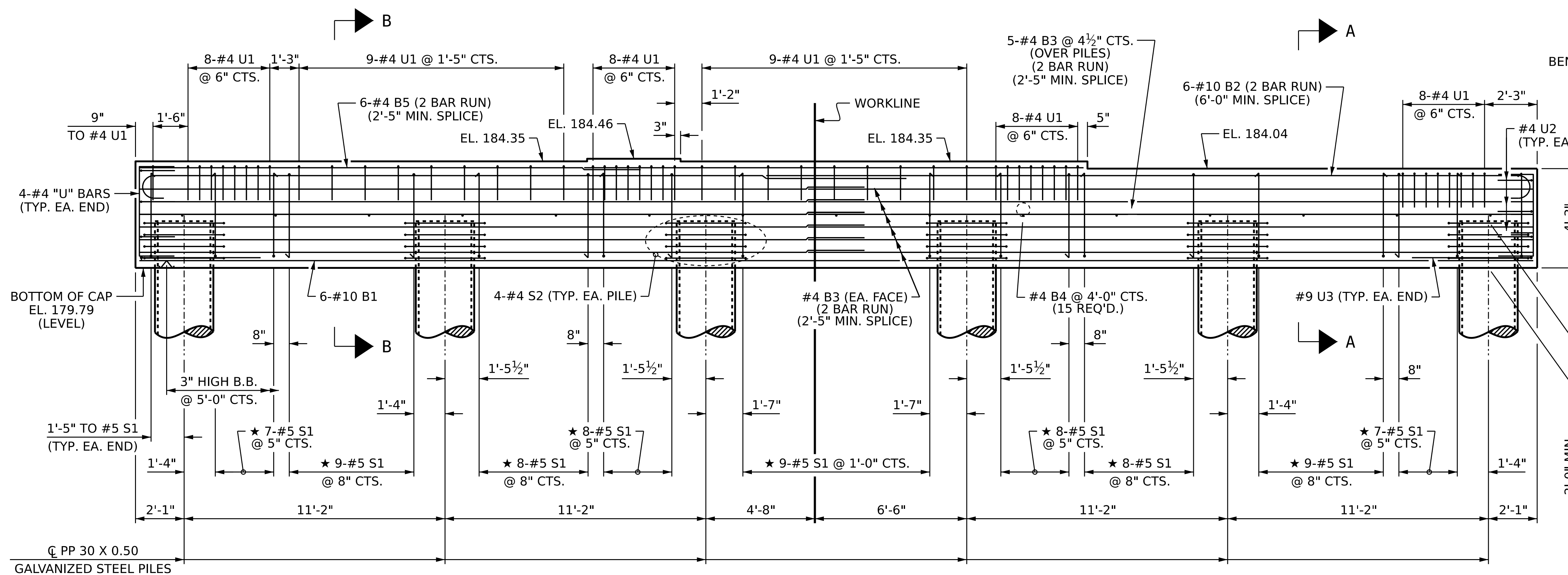
FOR PIPE PILE SPLICE DETAILS, SEE SHEET S1-37.

FOR ADDITIONAL REINFORCING STEEL IN PP 30 X 0.50 GALVANIZED STEEL PILES, SEE SHEET S1-37.

GALVANIZE THE TOP OF EACH INTERIOR BENT PILE A MINIMUM OF 45 FEET. GALVANIZE IN ACCORDANCE WITH SECTION 1076 OF THE STANDARD SPECIFICATIONS.

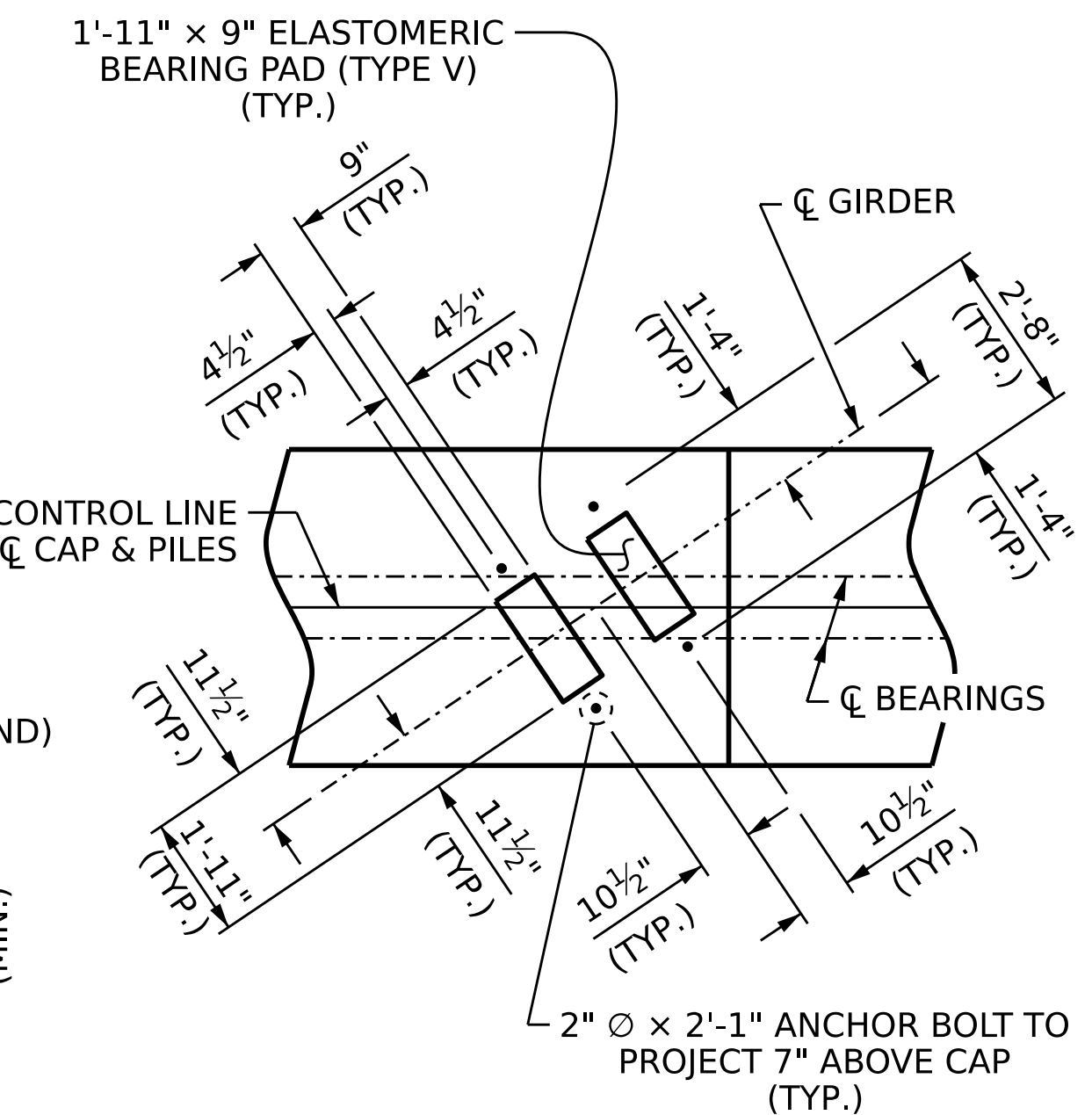


PLAN



★ INVERT ALTERNATE STIRRUPS

ELEVATION



DETAIL "A"

(TYP. EA. GIRDER)

PROJECT NO. **B-5981**

DUPLIN COUNTY

STATION: **23+56.64 -L-**

SHEET 1 OF 2

STATE OF NORTH CAROLINA
DEPARTMENT OF TRANSPORTATION
RALEIGH

SUBSTRUCTURE

BENT 1



DocuSigned by:
Paul D. Bryant
11C2194CF28442

10/24/2023

DOCUMENT NOT CONSIDERED
FINAL UNLESS ALL
SIGNATURES COMPLETED

REVISIONS		SHEET NO.	
NO.	BY:	DATE:	NO.
1			3
2			4
			TOTAL SHEETS
			43

DRAWN BY : P. K. NEWTON DATE : 10/18/22
 CHECKED BY : D. R. SHACKELFORD DATE : 2/1/23
 DESIGN ENGINEER OF RECORD : P. D. BRYANT DATE : 2/6/23

10/24/2023
 R:\Structures\Plans\300016\401_065_B5981_SMU_B1_S1-33_300016.dgn
 sssandor