

**PLAN OF FENCE POST SPACING**

(PAY LENGTH = 528.00 LIN. FT.)

**NOTES**

FOR 72" CHAIN LINK FENCE, SEE SPECIAL PROVISIONS.

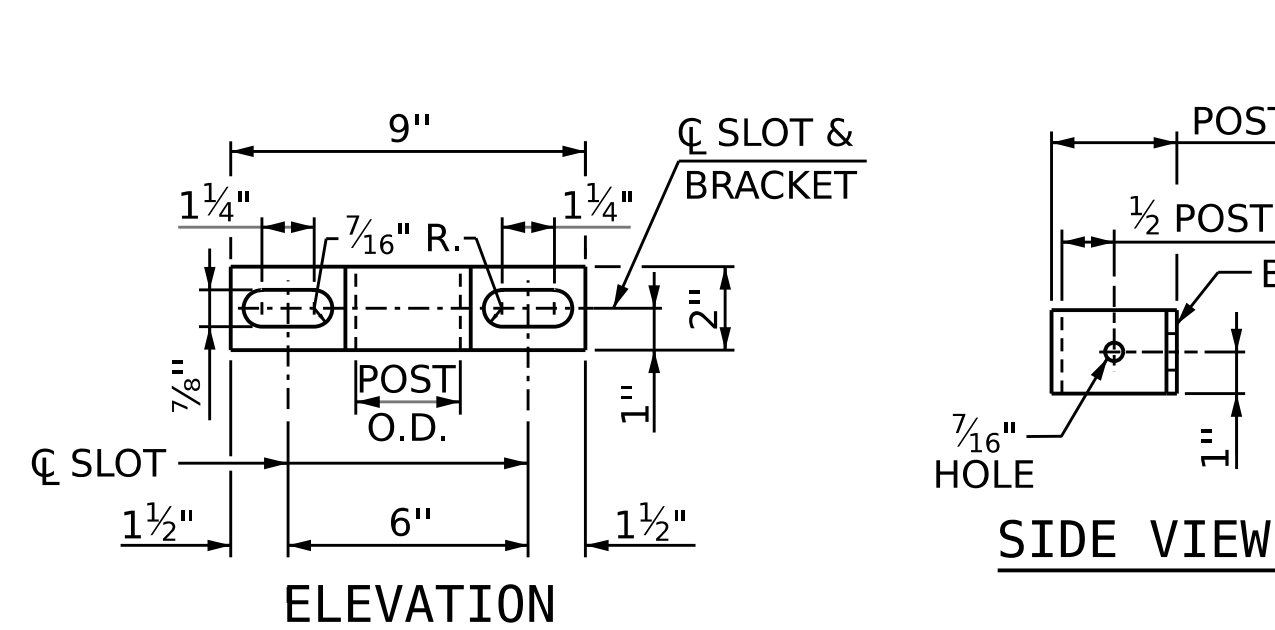
MATERIAL FOR ANCHOR BOLTS SHALL BE TYPE 304 STAINLESS STEEL WITH A MINIMUM 9000 PSI ULTIMATE STRENGTH. NUTS AND WASHERS SHALL BE TYPE 304 STAINLESS STEEL. ANCHOR BOLTS SHALL BE EMBEDDED AS PER ADHESIVE BONDING SYSTEM MANUFACTURER SPECIFICATIONS. NUTS SHALL BE AMERICAN STANDARD FINISHED HEXAGON THICK NUTS, CLASS 2B THREADS.

FOR SETTING ANCHOR BOLTS, THE CONTRACTOR SHALL USE AN ADHESIVE BONDING SYSTEM. SEE STANDARD SPECIFICATIONS SECTION 420-13 FOR ADHESIVELY ANCHORED ANCHOR BOLTS OR DOWELS. LEVEL ONE FIELD TESTING OF BONDING SYSTEM IS REQUIRED AND THE YIELD LOAD OF THE  $\frac{3}{4}$ "  $\varnothing$  BOLTS IS 12.0 KIPS.

ALL FENCE MATERIAL SHALL MEET THE REQUIREMENTS OF SECTION 1050 OF THE STANDARD SPECIFICATIONS. GALVANIZE ALL STEEL PARTS AND HARDWARE IN ACCORDANCE WITH ARTICLE 1076 OF THE STANDARD SPECIFICATIONS.

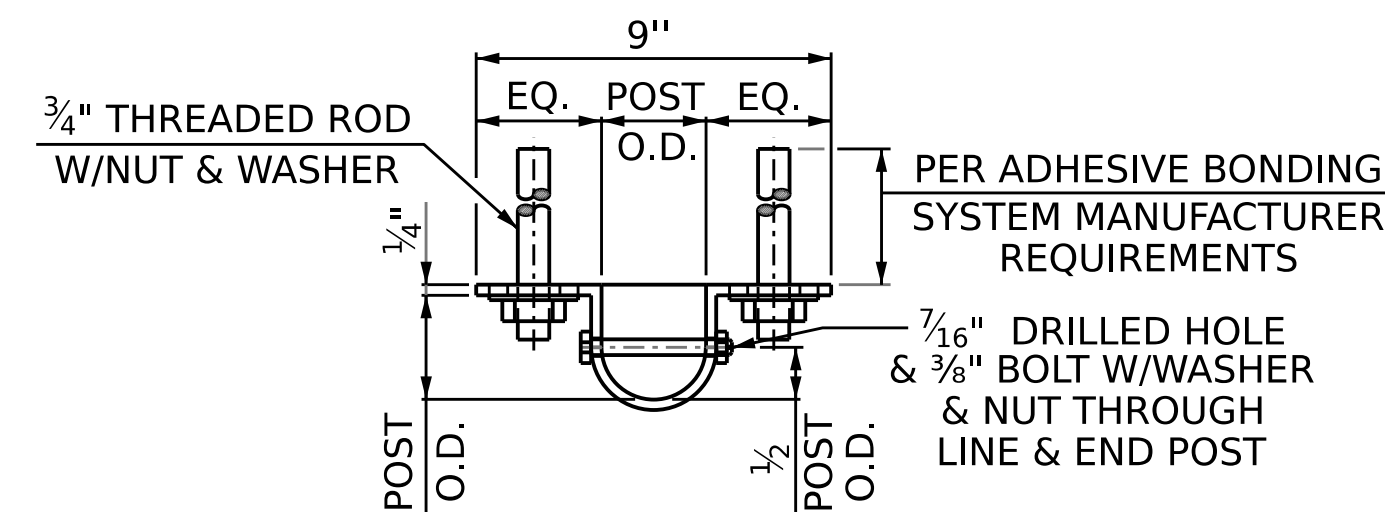
FENCE POST LOCATIONS SHALL BE SHIFTED, AS NECESSARY, TO MAINTAIN 12" MINIMUM DISTANCE FROM ANCHOR BOLT TO JOINTS IN BARRIER RAIL.

DIMENSIONS ARE SHOWN ALONG OUTSIDE FACE OF BARRIER RAIL.

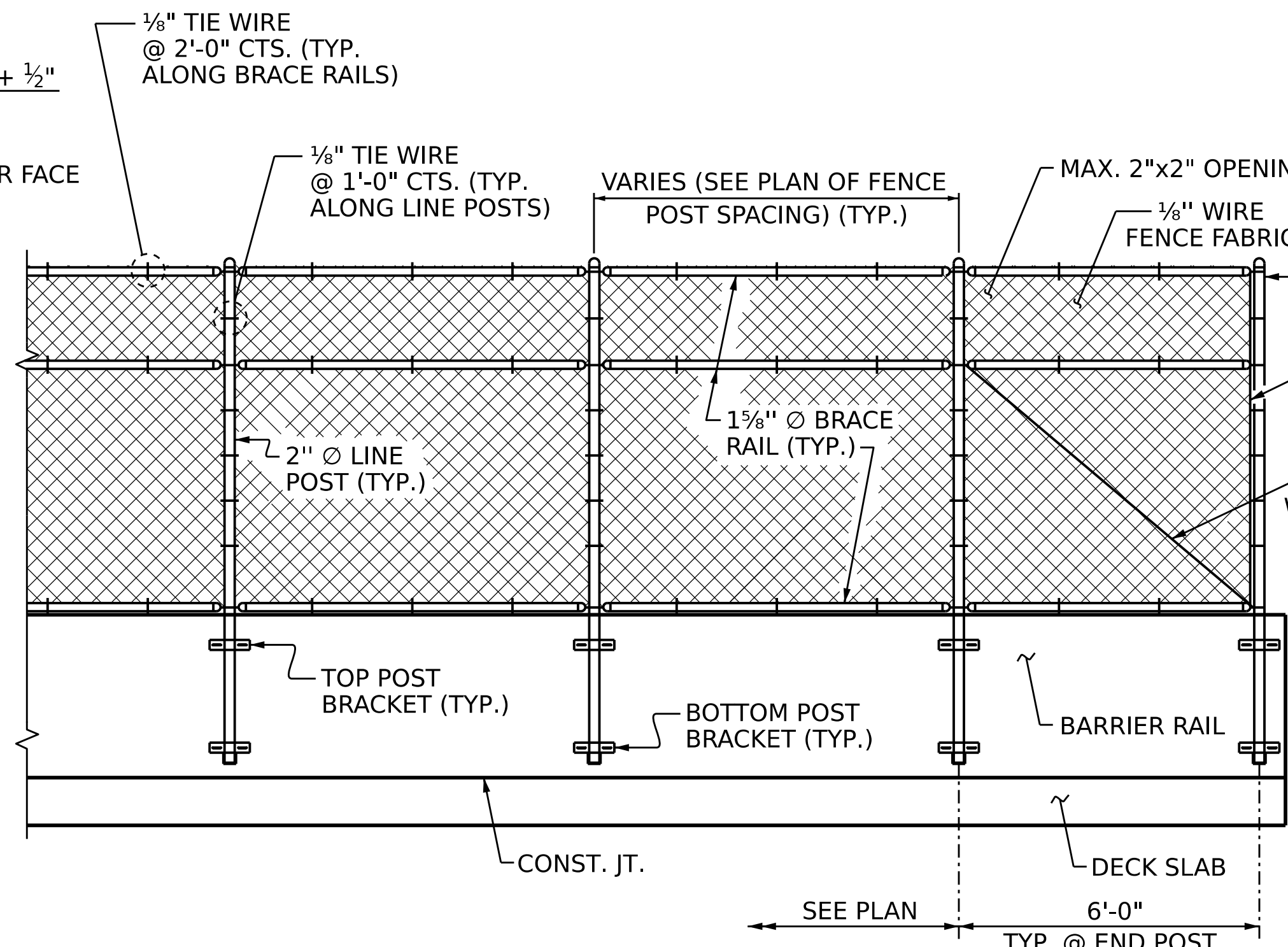


**ELEVATION**

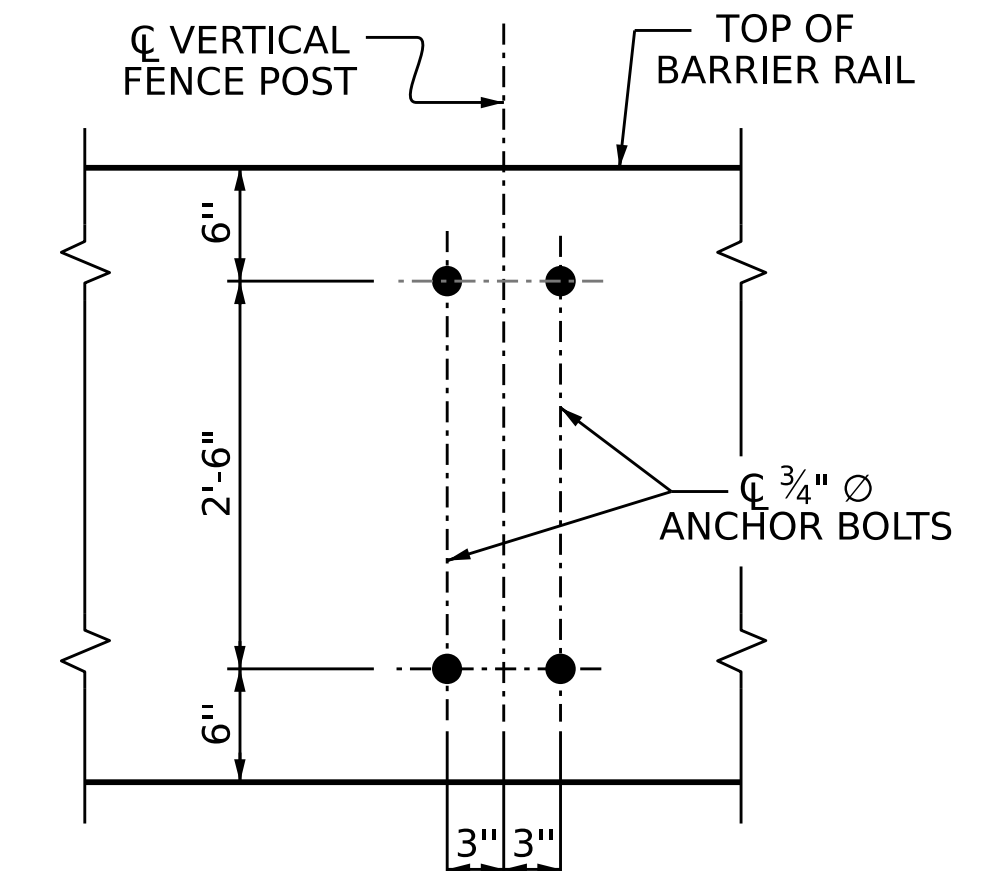
**SIDE VIEW**



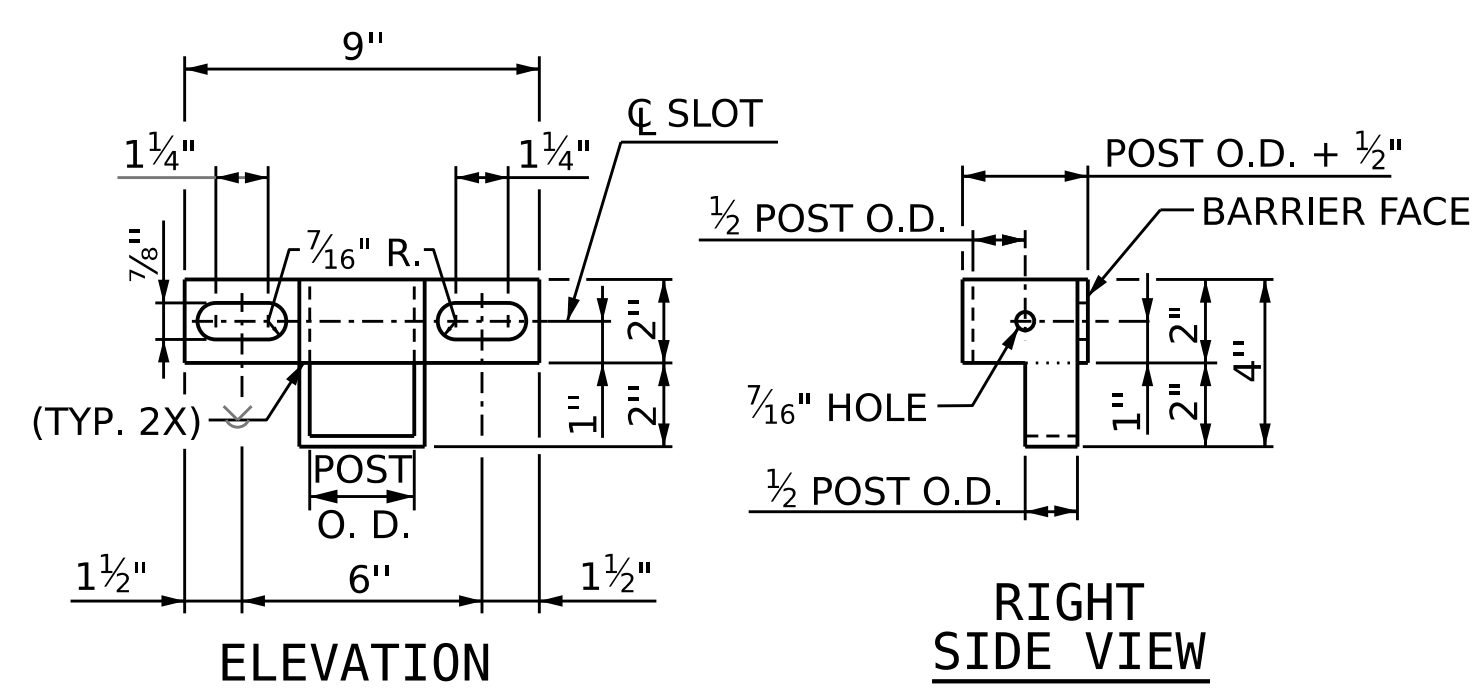
**TOP POST BRACKET**



**PARTIAL ELEVATION**

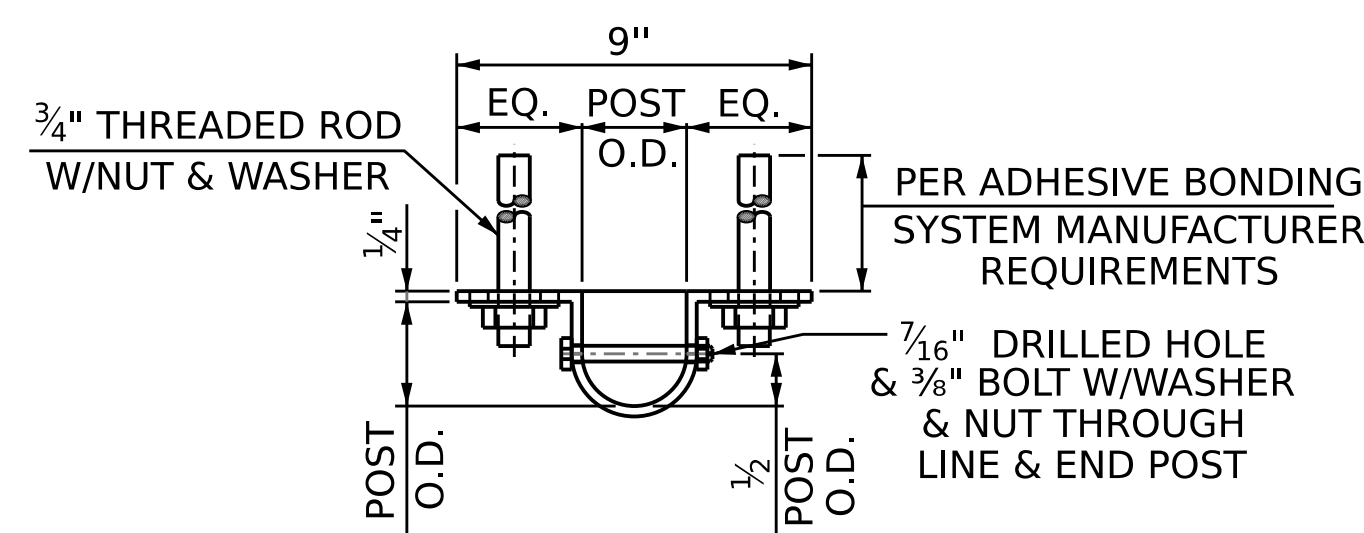


**BOLT SETTING DETAIL**



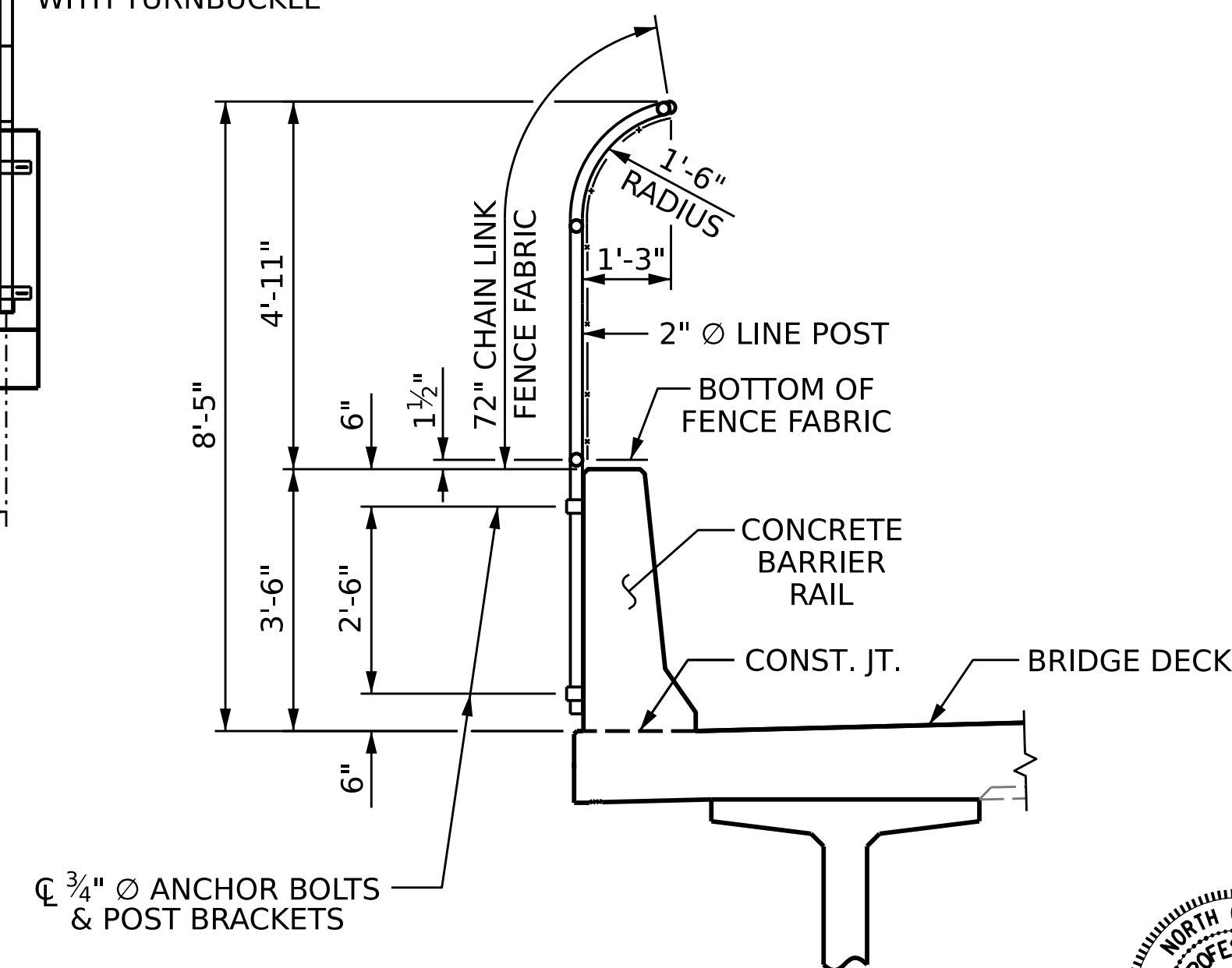
**ELEVATION**

**RIGHT SIDE VIEW**



**PLAN**

**BOTTOM POST BRACKET**



**SECTION THRU FENCE**

PROJECT NO. **B-5981**  
**DUPLIN** COUNTY  
 STATION: **23+56.64 -L-**

STATE OF NORTH CAROLINA  
 DEPARTMENT OF TRANSPORTATION  
 RALEIGH

**BRIDGE MOUNTED CHAIN LINK FENCE DETAILS**



DocuSigned by:  
 William C. Smith  
 10/24/2023

DRAWN BY: **K. BEARD** DATE: **4/5/22**  
 CHECKED BY: **D. SHACKELFORD** DATE: **6/6/22**  
 DESIGN ENGINEER OF RECORD: **W.C. SMITH** DATE: **3/8/23**

10/18/2023  
 R:\Structures\Plans\300016\401\_051\_B5981.SMU.CLF.S1-26\_300016.dgn  
 ssandor

DOCUMENT NOT CONSIDERED FINAL UNLESS ALL SIGNATURES COMPLETED

REVISIONS						SHEET NO.
NO.	BY:	DATE:	NO.	BY:	DATE:	S1-26
1			3			TOTAL SHEETS
2			4			43