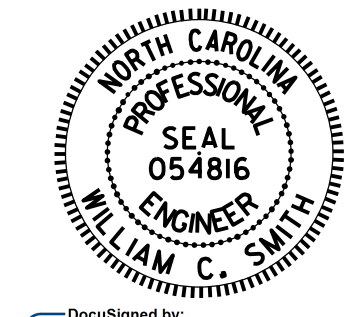


**PLAN OF SPAN B**

FOR INTERMEDIATE STEEL DIAPHRAGM DETAILS, SEE "INTERMEDIATE STEEL DIAPHRAGMS FOR 63" MODIFIED BULBTEE PRESTRESSED CONCRETE GIRDERS" SHEET.  
FOR LOCATIONS OF TRANSVERSE CONSTRUCTION JOINTS, SEE SHEET S1-29

PROJECT NO. **B-5981**  
DUPLIN COUNTY  
STATION: **23+56.64 -L-**

SHEET 2 OF 3



DocuSigned by:  
William C. Smith  
10/24/2023

STATE OF NORTH CAROLINA  
DEPARTMENT OF TRANSPORTATION  
RALEIGH  
SUPERSTRUCTURE  
**PLAN OF SPANS**

DRAWN BY: **K. BEARD** DATE: **7/27/22**  
CHECKED BY: **D. SHACKELFORD** DATE: **11/18/22**  
DESIGN ENGINEER OF RECORD: **W.C. SMITH** DATE: **3/8/23**

DOCUMENT NOT CONSIDERED FINAL UNLESS ALL SIGNATURES COMPLETED

| REVISIONS |     |       |     |     |       | SHEET NO.<br>S1-11<br>TOTAL SHEETS<br>43 |
|-----------|-----|-------|-----|-----|-------|--|
| NO.       | BY: | DATE: | NO. | BY: | DATE: |  |
| 1         |     |       | 3   |     |       |  |
| 2         |     |       | 4   |     |       |  |