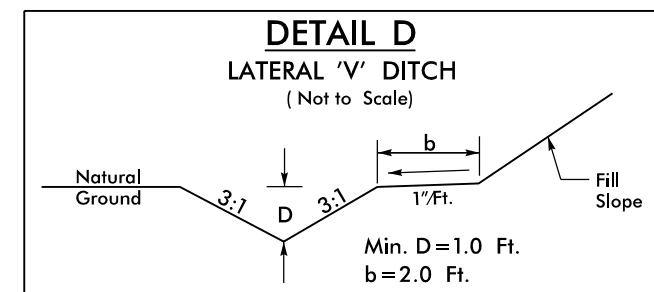


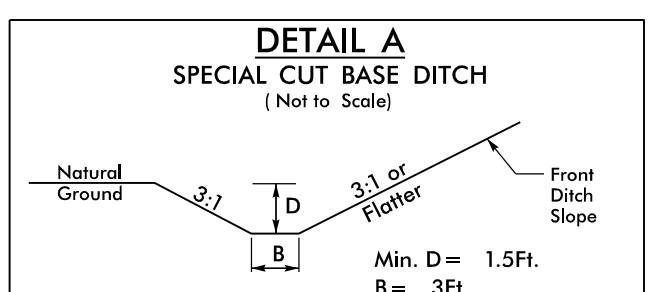
PROJECT REFERENCE NO. B-5981	SHEET NO. EC-7/CONST.5
RW SHEET NO.	
ROADWAY DESIGN ENGINEER	HYDRAULICS ENGINEER

Place Matting for Erosion Control on Slope as Work Allows.

- L- Sta. 21+00 to 22+00 LT
- L- Sta. 21+00 to 22+50 RT
- L- Sta. 25+00 to 26+50 LT
- L- Sta. 25+50 to 29+00 RT
- YI- Sta. 10+00 to 11+00 RT



FROM STA. -L- 26+20 RT TO STA. -YI- 10+50 RT

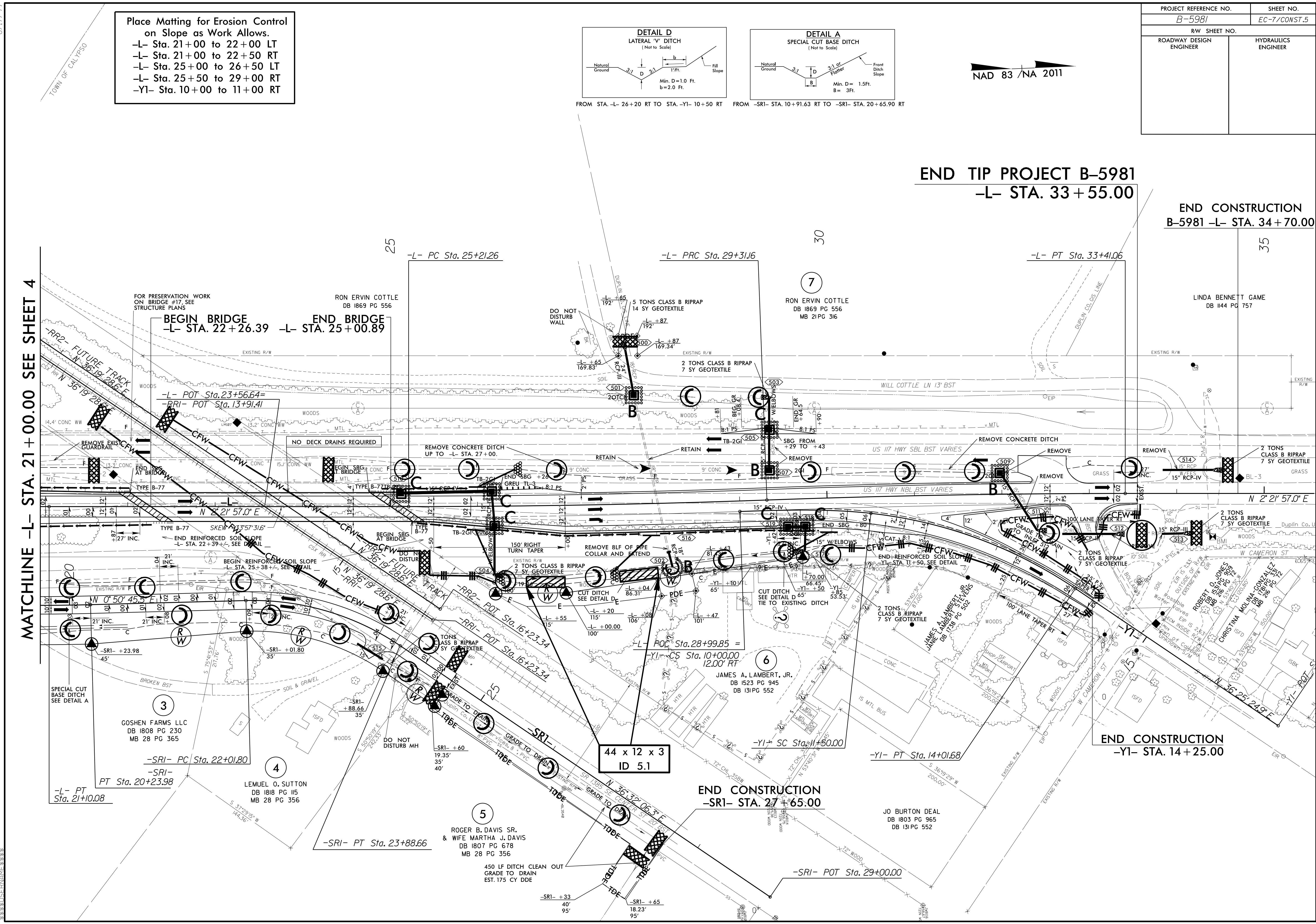


FROM -SRI- STA. 10+91.63 RT TO -SRI- STA. 20+65.90 RT

NAD 83 / NA 2011

**END TIP PROJECT B-5981**  
-L- STA. 33+55.00

**END CONSTRUCTION**  
B-5981 -L- STA. 34+70.00



MATCHLINE -L- STA. 21+00.00 SEE SHEET 4

8/17/99 TOWN OF CALIPSO

26-AUG-2022 13:29 R:\Projects\B5981\EC\_Plan5.dgn

3  
GOSHEN FARMS LLC  
DB 1808 PG 230  
MB 28 PG 365  
-SRI- PC Sta. 22+01.80  
-SRI- PT Sta. 20+23.98  
-L- PT Sta. 21+10.08

4  
LEMUEL O. SUTTON  
DB 1818 PG 115  
MB 28 PG 356  
-SRI- PT Sta. 23+88.66

5  
ROGER B. DAVIS SR.  
& WIFE MARTHA J. DAVIS  
DB 1807 PG 678  
MB 28 PG 356  
450 LF DITCH CLEAN OUT  
GRADE TO DRAIN  
EST. 175 CY DDE

44 x 12 x 3  
ID 5.1

**END CONSTRUCTION**  
-SRI- STA. 27+65.00

JO BURTON DEAL  
DB 1803 PG 965  
DB 131 PG 552  
-SRI- POT Sta. 29+00.00

**END CONSTRUCTION**  
-YI- STA. 14+25.00

35

30

25

6

7