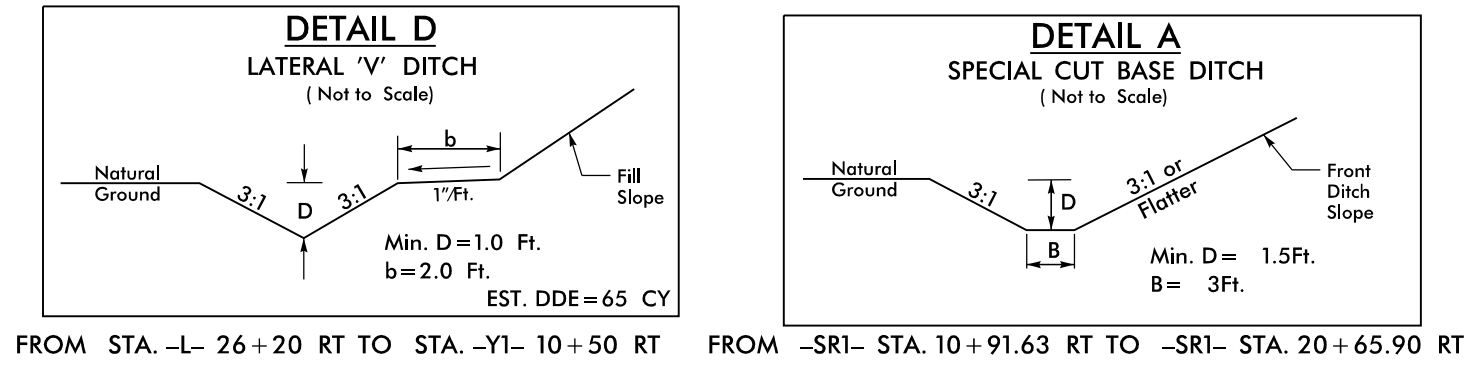


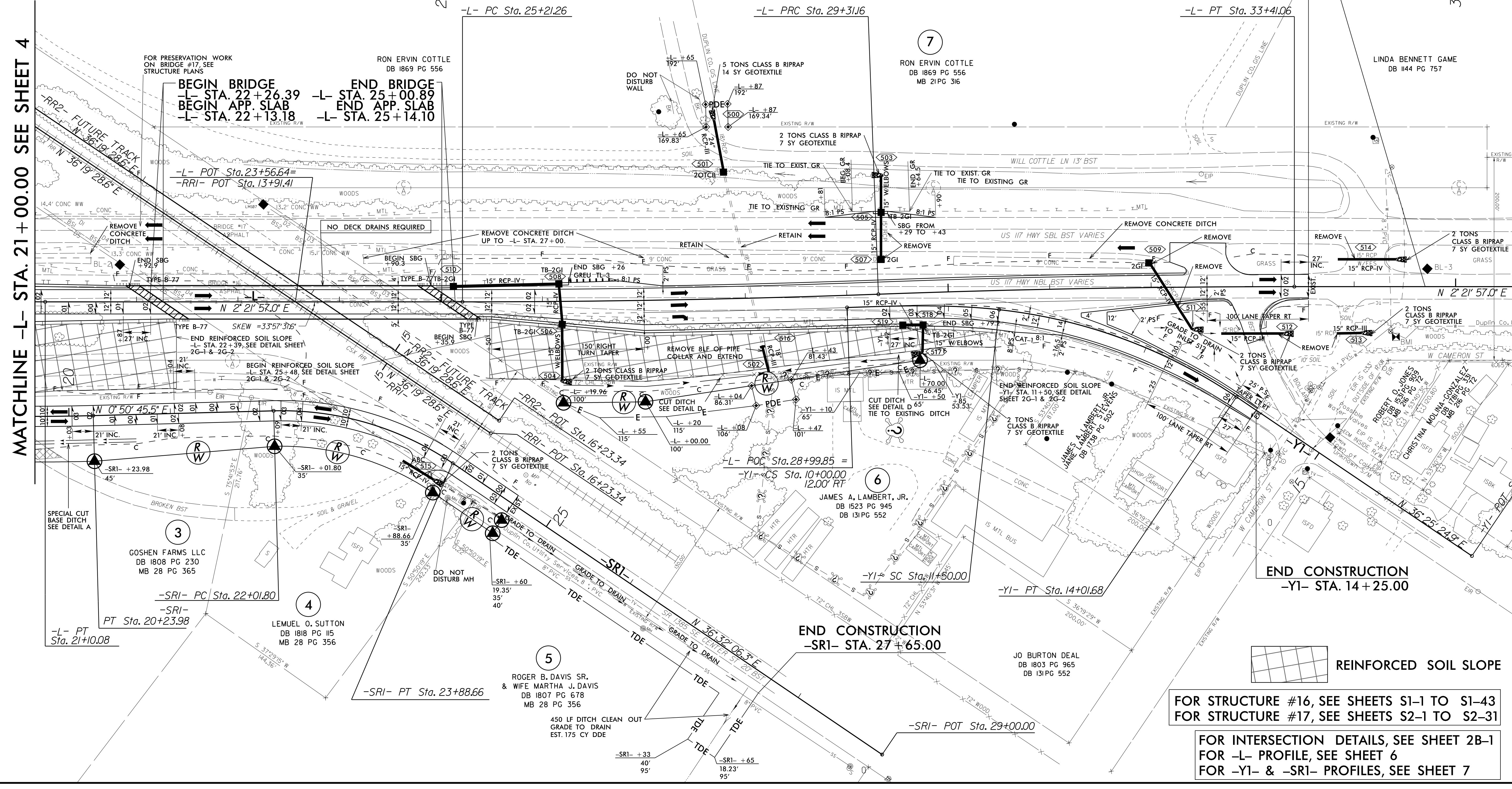
PROJECT REFERENCE NO. B-5981	SHEET NO. 5
R/W SHEET NO. ENGINEER	HYDRAULICS ENGINEER
DOCUMENT NOT CONSIDERED FINAL UNLESS ALL SIGNATURES COMPLETED	

<b>-L-</b> PI Sta 27+26.23 $\Delta = 2' 05" 48.9" (LT)$ $D = 0' 30" 41.7"$ $L = 409.90'$ $T = 204.97'$ $R = 11,200.00'$ $SE = NC$ $Runoff = N/A$	<b>-YI-</b> PI Sta 31+36.13 $\Delta = 2' 05" 48.9" (RT)$ $D = 0' 30" 41.7"$ $L = 409.90'$ $T = 204.97'$ $R = 11,200.00'$ $SE = NC$ $Runoff = N/A$	<b>-SRI-</b> PI Sta 37+23.35 $\Theta_s = 4' 00" 24.1"$ $L_s = 200.00'$ $LT = 133.37'$ $ST = 66.70'$	<b>-L-</b> PI Sta 41+18.94 $\Delta = 2' 54" 34.6" (LT)$ $D = 4' 00" 24.1"$ $L = 646.66'$ $T = 328.95'$ $R = 1,430.00'$ $SE = EXIST.$
--	---	--	---



NAD 83 / NA 2011

MATCHLINE -L- STA. 21+00.00 SEE SHEET 4



**END TIP PROJECT B-5981**  
**-L- STA. 33+55.00**

**END CONSTRUCTION**  
**B-5981 -L- STA. 34+70.00**

**END CONSTRUCTION**  
**-YI- STA. 14+25.00**

**END CONSTRUCTION**  
**-SRI- STA. 27+65.00**

FOR STRUCTURE #16, SEE SHEETS S1-1 TO S1-43  
FOR STRUCTURE #17, SEE SHEETS S2-1 TO S2-31

FOR INTERSECTION DETAILS, SEE SHEET 2B-1  
FOR -L- PROFILE, SEE SHEET 6  
FOR -YI- & -SRI- PROFILES, SEE SHEET 7

8/17/99  
 REVISIONS  
 31-MAR-2023 16:44 R:\Projects\B5981\rdy-Psh5.dgn  
 31-MAR-2023 16:44 R:\Projects\B5981\rdy-Psh5.dgn  
 31-MAR-2023 16:44 R:\Projects\B5981\rdy-Psh5.dgn