

NOTES:

USE CLASS "A" CONCRETE.

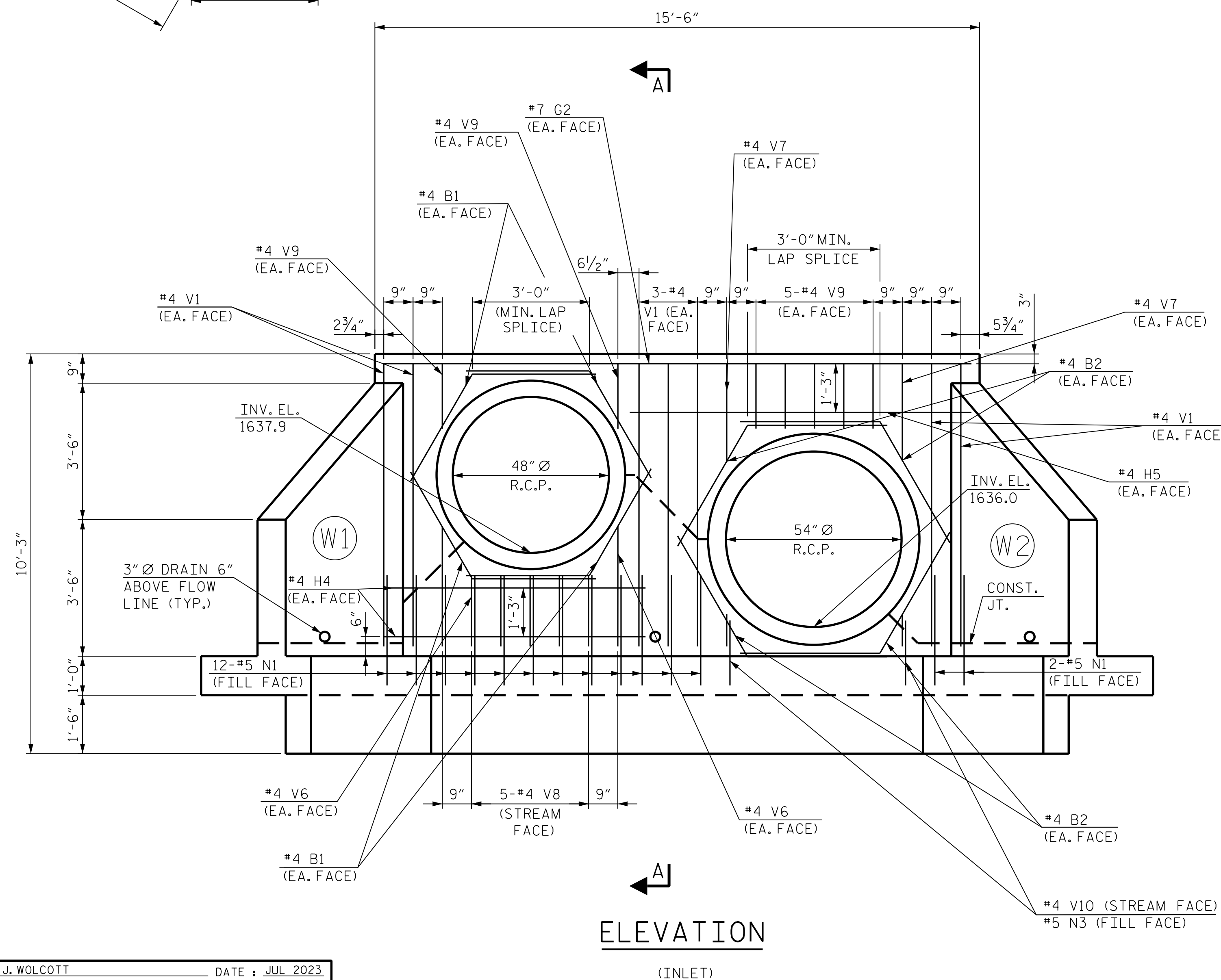
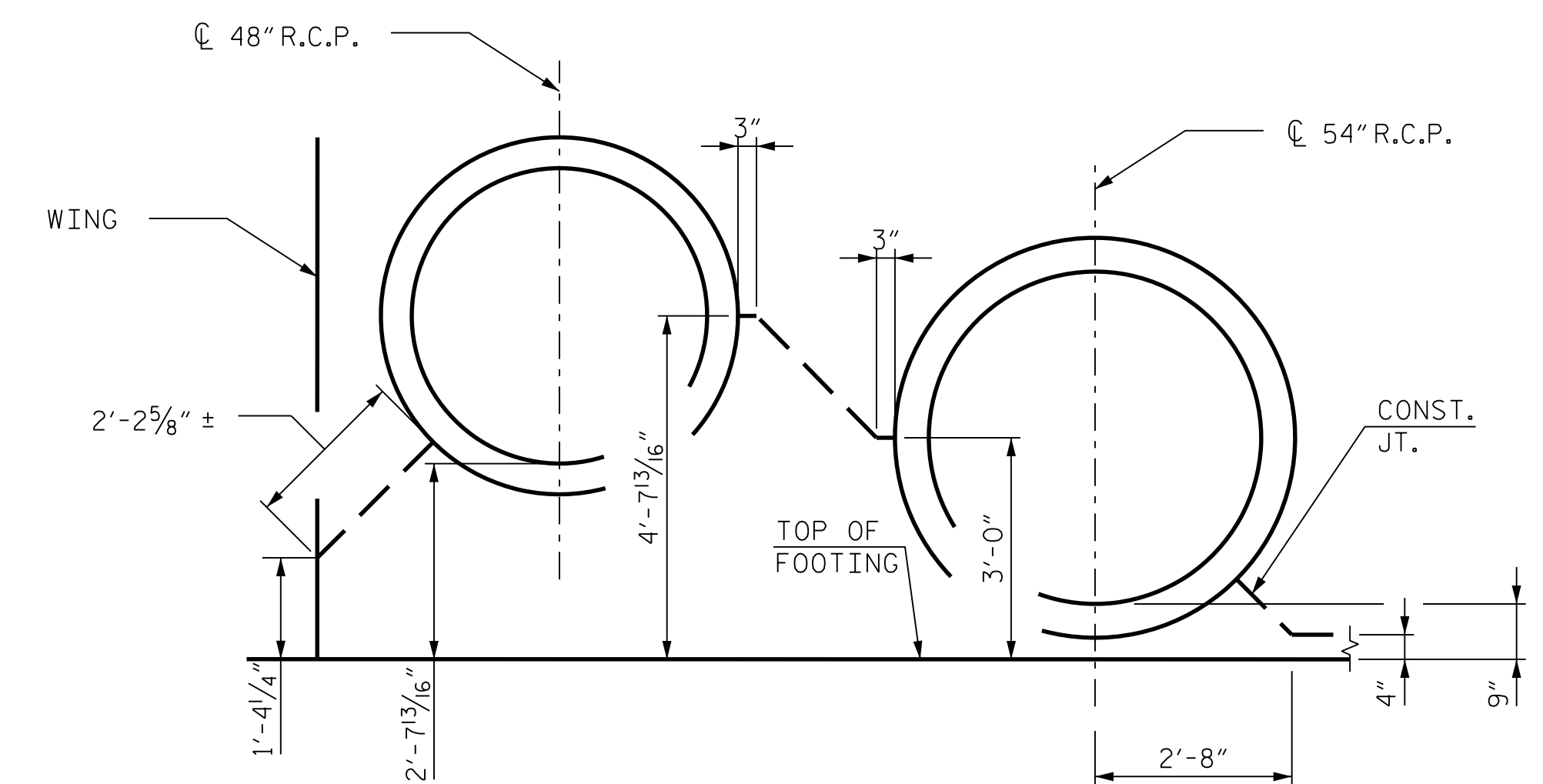
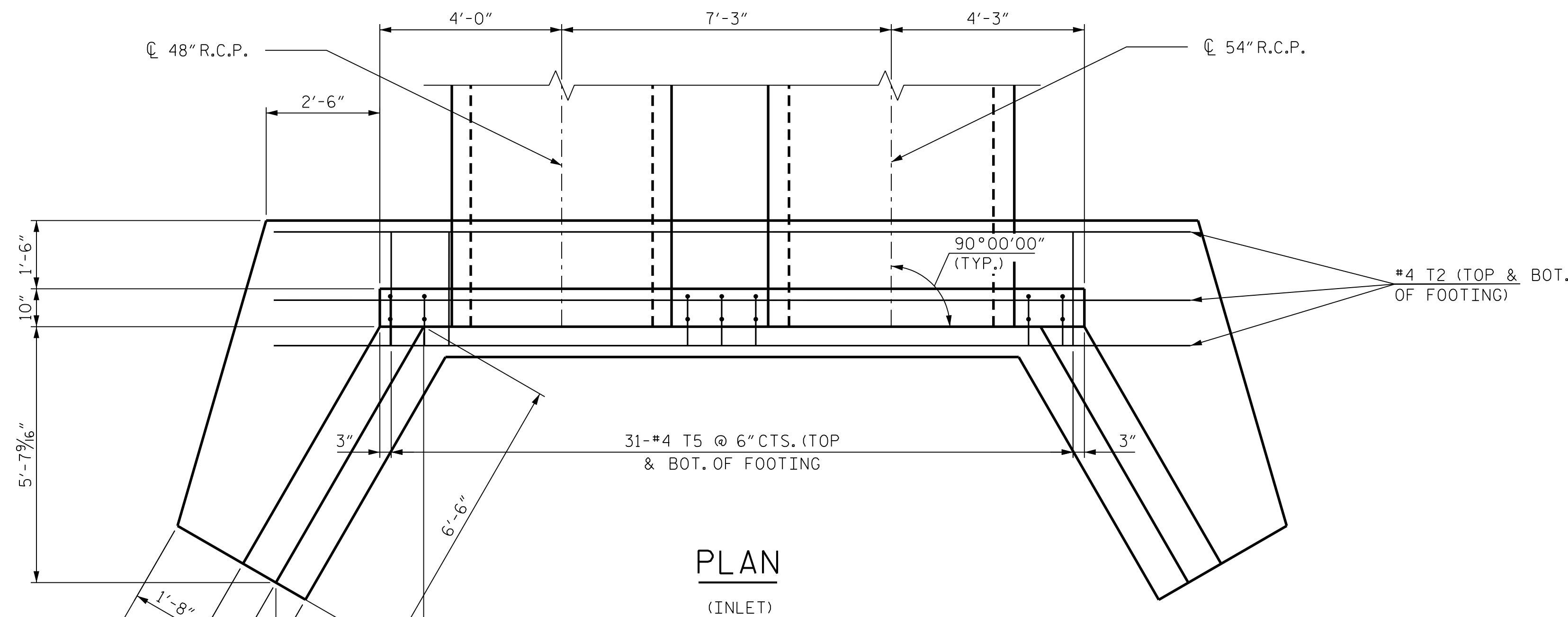
CHAMFER ALL EXPOSED CORNERS 1".

ALL DIMENSIONS RELATIVE TO PLACEMENT OF REINFORCING STEEL ARE TO CENTERS OF BARS.

PLACE A STONE DRAIN OF ONE (1) CUBIC FOOT OF NUMBER 78M STONE CONTAINED IN A POROUS FABRIC AT EACH WEEP HOLE. PLACE SUBDRAIN FINE AGGREGATE BENEATH, AROUND AND OVER THE STONE DRAIN SO THE STONE DRAIN IS COMPLETELY COVERED BY A LAYER OF SUBDRAIN FINE AGGREGATE AT LEAST ONE (1) FOOT THICK. WHERE THERE IS MORE THAN ONE WEEP HOLE IN A WING WALL, PLACE A HORIZONTAL DRAIN OF SUBDRAIN FINE AGGREGATE AT LEAST ONE (1) FOOT SQUARE IN CROSS SECTION TO CONNECT ALL STONE DRAINS. PLACE A VERTICAL DRAIN OF SUBDRAIN FINE AGGREGATE AT LEAST ONE (1) FOOT SQUARE IN A CROSS SECTION AT EACH WEEP HOLE TO AN ELEVATION OF TWO (2) FEET BELOW THE SURFACE OF THE EMBANKMENT.

FOR REINFORCING IN WINGS, SEE SHEET S-5.

FOR SECTION A-A, SEE SHEET S-5.



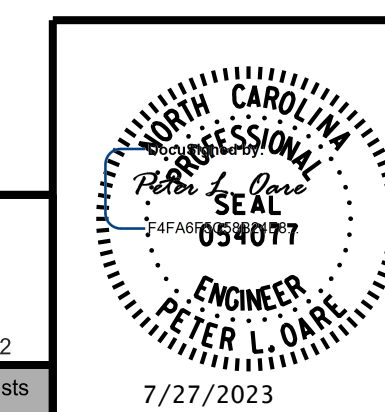
CONSTRUCTION JOINT DETAIL

PROJECT NO. R-5861
CHEROKEE COUNTY
 STATION: 13+04.00 -Y9-

SHEET 4 OF 6

STATE OF NORTH CAROLINA
 DEPARTMENT OF TRANSPORTATION
 RALEIGH

SPECIAL HEADWALL EXTENSION
 STR. 1315
 PLAN AND ELEVATION



RK&K
 P: (919) 878-9560
 8601 Six Forks Road, Forum 1 Suite 700
 Raleigh, North Carolina 27615 | NC License No. F-0112
 Engineers | Construction Managers | Planners | Scientists
 www.rkk.com
 Responsive People | Creative Solutions
 7/27/2023

REVISIONS				SHEET NO.			
NO.	BY:	DATE:	NO.	BY:	DATE:	S-4	
1			3			TOTAL SHEETS	
2			4			6	

7/27/2023 R:\Structures\Headwalls\DGNN\Final\R-5861_SMJ_HW_S4.dgn
 DRAWN BY : A. J. WOLCOTT DATE : JUL 2023
 CHECKED BY : P. L. OARE DATE : JUL 2023
 DESIGN ENGINEER OF RECORD : P. L. OARE DATE : JUL 2023

tboyd

**DOCUMENT NOT CONSIDERED FINAL
 UNLESS ALL SIGNATURES COMPLETED**