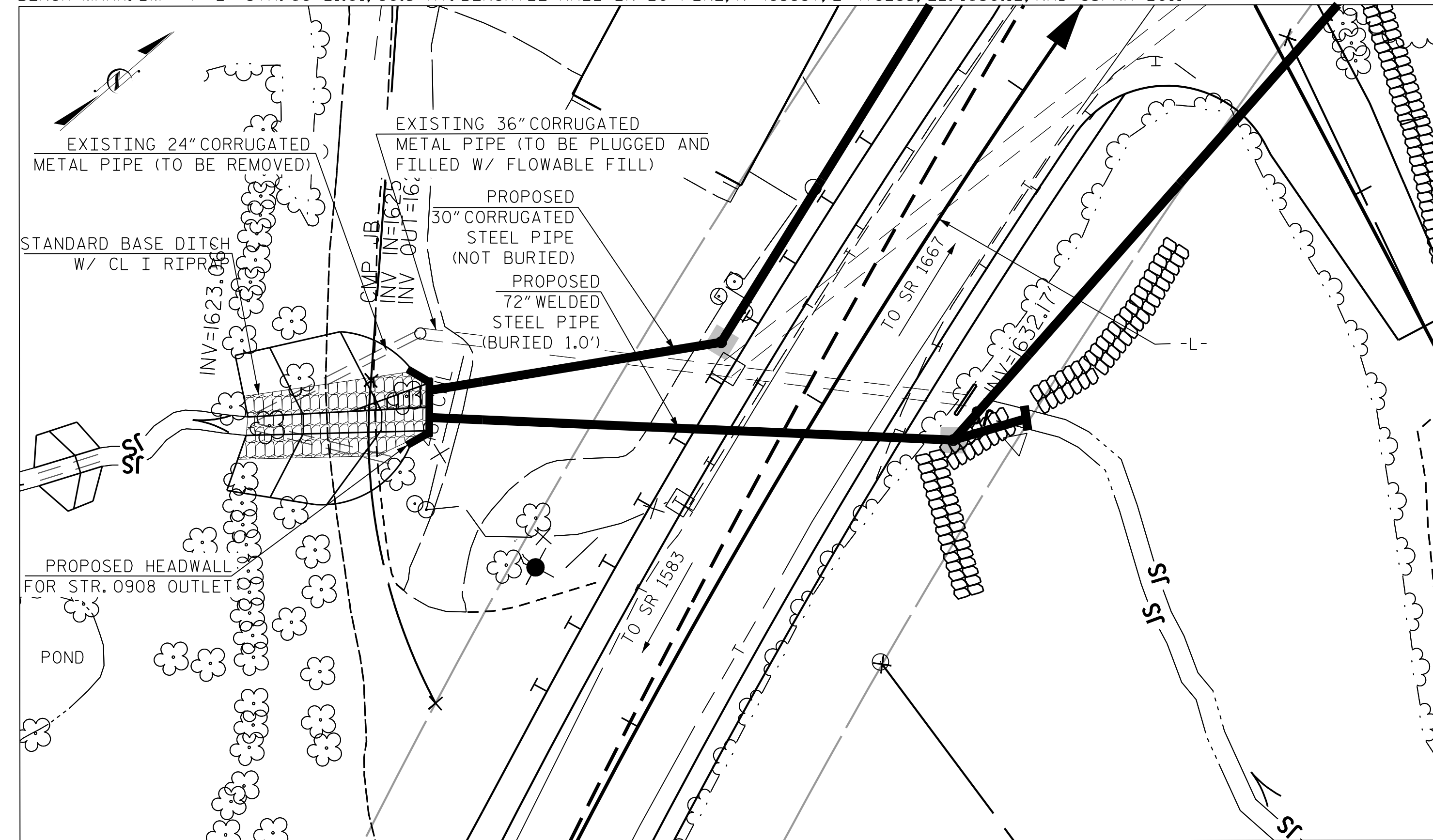
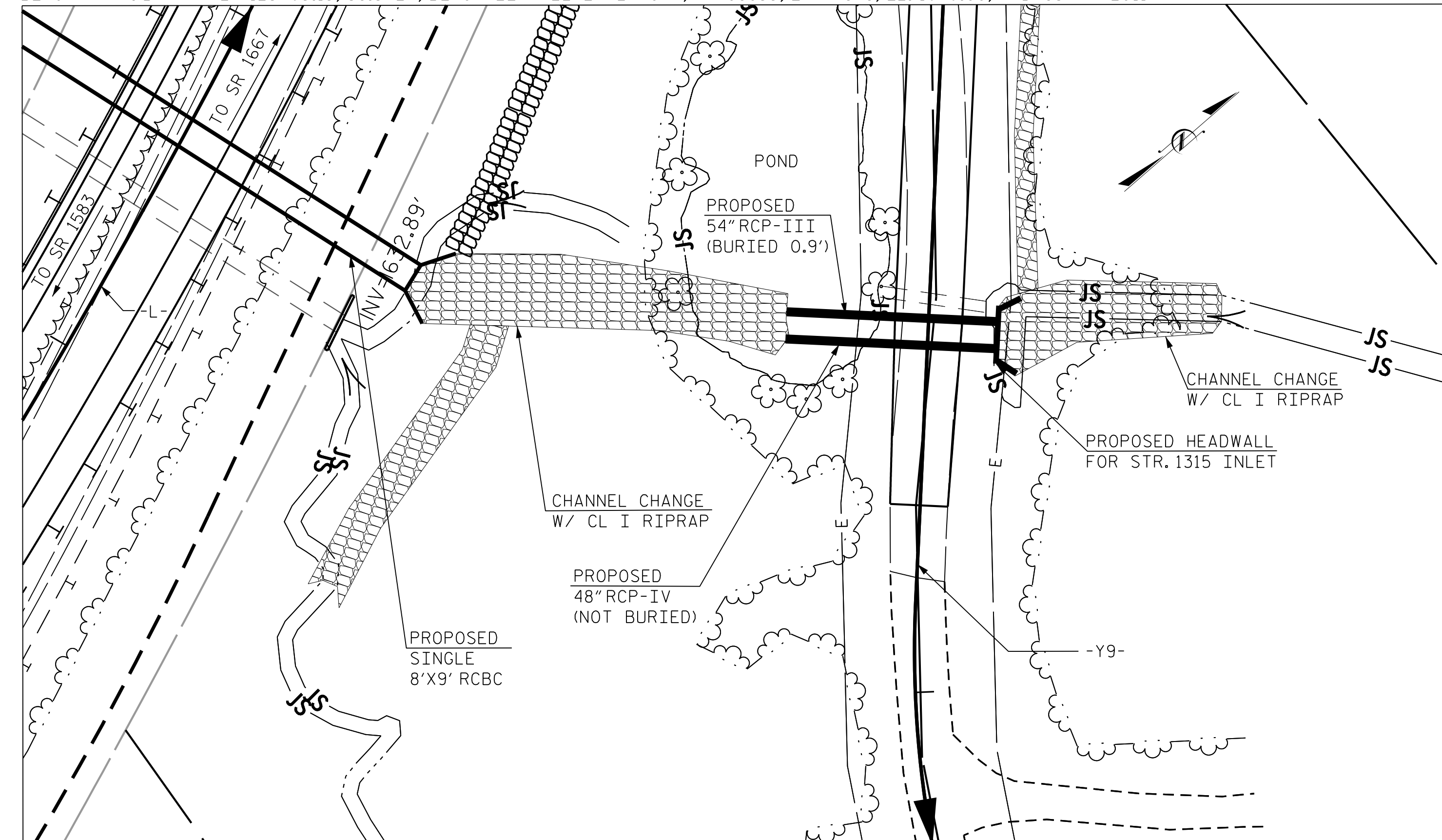


BENCH MARK: BM #4 -L- STA. 69+21.01, 80.5' RT. BENCHTIE NAIL IN 20" PINE, N 493887, E 479285; EL. 1630.12, NAD 83/NA 2011



STR. 0908 LOCATION SKETCH (STA. 81+90.44 -L-)

BENCH MARK: BM #7 -L- 123+65.15, 38.3' LT. BENCHTIE NAIL IN 24" OAK, N 498955, E 477848; EL. 1676.09, NAD 83/NA 2011



STR. 1315 LOCATION SKETCH (STA. 13+04.00 -Y9-)

TOTAL STR. 0908 QUANTITIES (OUTLET)		
CLASS A CONCRETE		
TOTAL	10.0	C.Y.
REINFORCING STEEL		
TOTAL	858	LBS.

TOTAL STR. 1315 QUANTITIES (INLET)		
CLASS A CONCRETE		
TOTAL	9.9	C.Y.
REINFORCING STEEL		
TOTAL	835	LBS.

NOTES:

3" Ø WEEP HOLES INDICATED TO BE IN ACCORDANCE WITH THE SPECIFICATIONS.

FOR OTHER DESIGN DATA AND NOTES, SEE STANDARD NOTE SHEET.

A 3 FOOT STRIP OF FILTER FABRIC SHALL BE ATTACHED TO THE FILL FACE OF THE WINGS COVERING THE ENTIRE LENGTH OF THE CONSTRUCTION JOINT.

FOR FALSEWORK AND FORMWORK, SEE SPECIAL PROVISIONS.

FOR CRANE SAFETY, SEE SPECIAL PROVISIONS.

FOR GROUT FOR STRUCTURES, SEE SPECIAL PROVISIONS.

FOR SUBMITTAL OF WORKING DRAWINGS, SEE SPECIAL PROVISIONS.

FOR CULVERT DIVERSION DETAILS AND PAY ITEM, SEE EROSION CONTROL PLANS.

FOR MAINTENANCE OF TRAFFIC, SEE TRAFFIC CONTROL PLANS.

CONCRETE AT OUTLET (STR. 0908) TO BE POURED IN THE FOLLOWING ORDER:

1. WING FOOTINGS AND HEADWALL FOOTING AND WINGS/HEADWALL TO CONSTRUCTION JOINT.
2. THE REMAINING PORTION OF THE WINGWALLS AND HEADWALL TO CONSTRUCTION JOINT.

CONCRETE AT INLET (STR. 1315) TO BE POURED IN THE FOLLOWING ORDER:

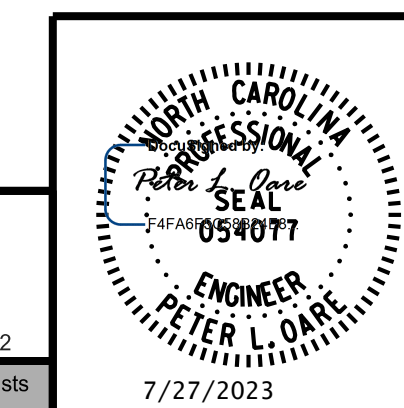
1. WING FOOTINGS AND HEADWALL FOOTING AND WINGS/HEADWALL TO CONSTRUCTION JOINT.
2. THE REMAINING PORTION OF THE WINGWALLS AND HEADWALL TO CONSTRUCTION JOINT.

PROJECT NO. R-5861
CHEROKEE COUNTY
 STATION: 81+90.44 -L- & 13+04.00 -Y9-

SHEET 1 OF 6

STATE OF NORTH CAROLINA
 DEPARTMENT OF TRANSPORTATION
 RALEIGH

SPECIAL HEADWALL EXTENSIONS
 GENERAL NOTES
 & LOCATION SKETCHES



RK&K
 P: (919) 878-9560
 8601 Six Forks Road, Forum 1 Suite 700
 Raleigh, North Carolina 27615 | NC License No. F-0112
 Engineers | Construction Managers | Planners | Scientists
 www.rkk.com

7/27/2023

REVISIONS

NO.	BY:	DATE:	NO.	BY:	DATE:	SHEET NO.
1			3			S-1
2			4			TOTAL SHEETS 6

**DOCUMENT NOT CONSIDERED FINAL
 UNLESS ALL SIGNATURES COMPLETED**

7/27/2023 R:\Structures\Headwalls\DGNN\Final\R-5861_SMU_HW_S1.dgn tboyd

DRAWN BY : A. J. WOLCOTT DATE : JUL 2023
 CHECKED BY : P. L. OARE DATE : JUL 2023
 DESIGN ENGINEER OF RECORD : P. L. OARE DATE : JUL 2023