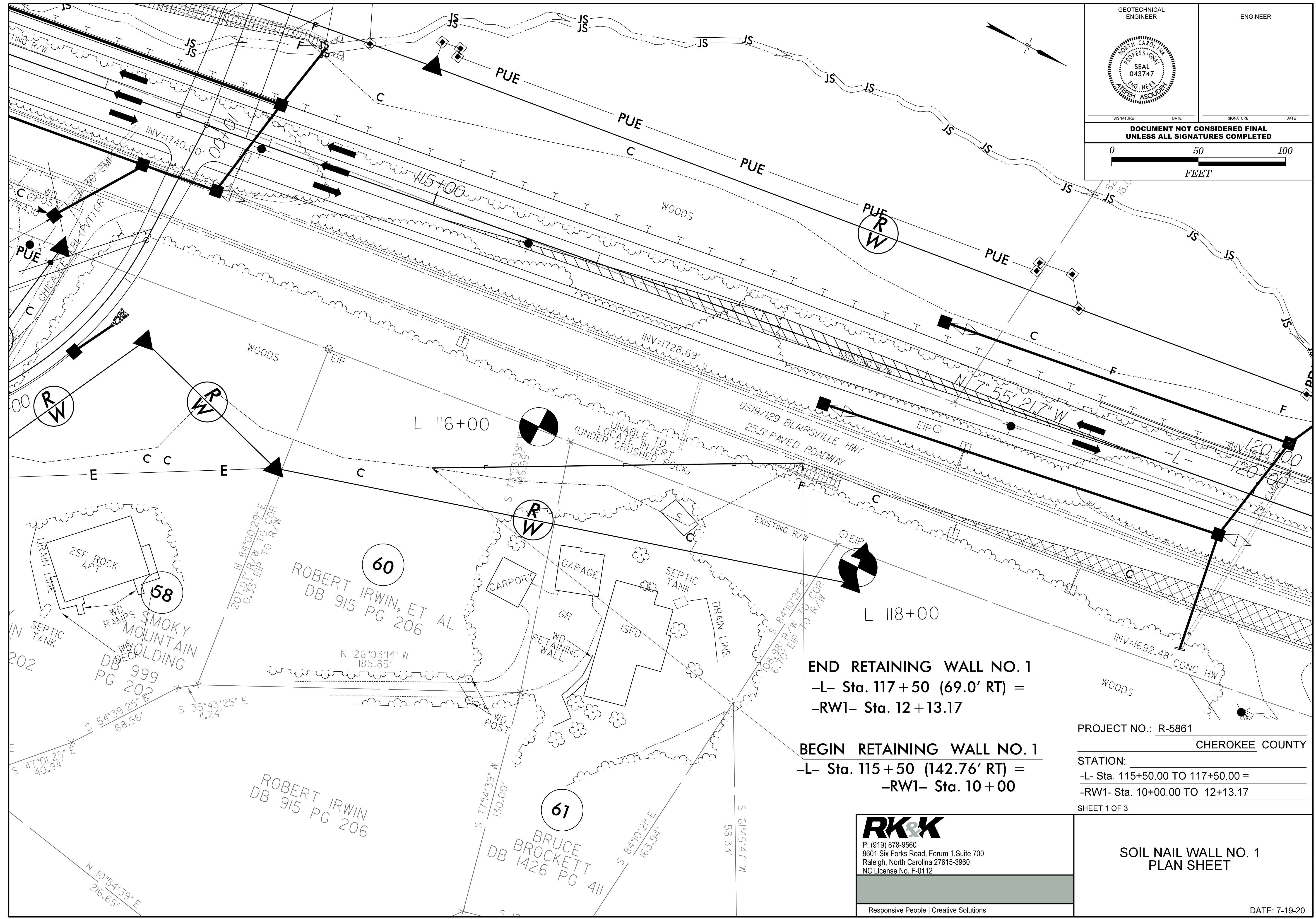
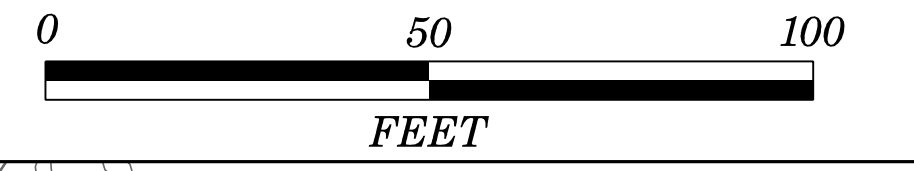


GEOTECHNICAL ENGINEER  
ENGINEER



SIGNATURE DATE SIGNATURE DATE

**DOCUMENT NOT CONSIDERED FINAL  
UNLESS ALL SIGNATURES COMPLETED**



**END RETAINING WALL NO. 1**  
 -L- Sta. 117+50 (69.0' RT) =  
 -RW1- Sta. 12+13.17

**BEGIN RETAINING WALL NO. 1**  
 -L- Sta. 115+50 (142.76' RT) =  
 -RW1- Sta. 10+00

PROJECT NO.: R-5861  
 CHEROKEE COUNTY  
 STATION:  
 -L- Sta. 115+50.00 TO 117+50.00 =  
 -RW1- Sta. 10+00.00 TO 12+13.17  
 SHEET 1 OF 3

**RK&K**  
 P: (919) 878-9560  
 8601 Six Forks Road, Forum 1, Suite 700  
 Raleigh, North Carolina 27615-3960  
 NC License No. F-0112

Responsive People | Creative Solutions

**SOIL NAIL WALL NO. 1  
 PLAN SHEET**

DATE: 7-19-20